

# 77 OLD KINGS HIGHWAY

Maple Shade, NJ 08052



FOR LEASE



INDUSTRIAL



22,689 SF



## LOCATION DESCRIPTION

Easy access to Routes 73, 41 & 38. Minutes to I-295 (Rte 73/Mt. Laurel) and NJ Turnpike Exit 4. Access to Betsy Ross Bridge via Routes 73 & 90 and Tacony-Palmyra Bridge via Route 73.

## PROPERTY HIGHLIGHTS

- 22,689 SF free-standing building
- 20,536 SF of warehouse
- 2,153 SF office area includes showroom, wet break room, (4) private offices, (3) restrooms
- 17' clear ceiling height
- 39' x 33'5" columns
- Gas heat
- 3 phase/200 amp power
- Wet sprinkler system
- (3) tailgate doors - (2) 10'x9", (1) 8'x9", (1) 14'X8"
- LED lighting
- Zoned PD - Planned Development District
- Real Estate Taxes: \$34,707 (2025)



## FOR MORE INFORMATION

**Jonathan Klear**



856.433.1801



jonathan.klear@naimertz.com

NAI MERTZ DISCLAIMER: NO WARRANTY OR REPRESENTATION, EXPRESS OR IMPLIED, IS MADE AS TO THE ACCURACY OF THE INFORMATION CONTAINED HEREIN, AND THE SAME IS SUBMITTED SUBJECT TO ERRORS, OMISSIONS, CHANGE OF PRICE, RENTAL OR OTHER CONDITIONS, PRIOR SALE, LEASE OR FINANCING, OR WITHDRAWAL WITHOUT NOTICE, AND OF ANY SPECIAL LISTING CONDITIONS IMPOSED BY OUR PRINCIPALS NO WARRANTIES OR REPRESENTATIONS ARE MADE AS TO THE CONDITION OF THE PROPERTY OR ANY HAZARDS CONTAINED THEREIN ARE ANY TO BE IMPLIED. OUTLINES ARE APPROXIMATE AND SHOWN ONLY TO IDENTIFY THE PARCEL IN CONSIDERATION.

# NAI Mertz



**NAI Mertz** | 21 Roland Avenue  
856.234.9600 | [www.naimertz.com](http://www.naimertz.com)  
Mount Laurel, NJ 08054





# 77 OLD KINGS HIGHWAY

Maple Shade, NJ 08052



FOR LEASE



INDUSTRIAL



22,689 SF



## FOR MORE INFORMATION

**Jonathan Klear**

856.433.1801

jonathan.klear@naimertz.com

NAI MERTZ DISCLAIMER: NO WARRANTY OR REPRESENTATION, EXPRESS OR IMPLIED, IS MADE AS TO THE ACCURACY OF THE INFORMATION CONTAINED HEREIN, AND THE SAME IS SUBMITTED SUBJECT TO ERRORS, OMISSIONS, CHANGE OF PRICE, RENTAL OR OTHER CONDITIONS, PRIOR SALE, LEASE OR FINANCING, OR WITHDRAWAL WITHOUT NOTICE, AND OF ANY SPECIAL LISTING CONDITIONS IMPOSED BY OUR PRINCIPALS NO WARRANTIES OR REPRESENTATIONS ARE MADE AS TO THE CONDITION OF THE PROPERTY OR ANY HAZARDS CONTAINED THEREIN ARE ANY TO BE IMPLIED. OUTLINES ARE APPROXIMATE AND SHOWN ONLY TO IDENTIFY THE PARCEL IN CONSIDERATION.

# NAI Mertz



**NAI Mertz** | 21 Roland Avenue  
856.234.9600 | [www.naimertz.com](http://www.naimertz.com)  
Mount Laurel, NJ 08054





# 77 OLD KINGS HIGHWAY

Maple Shade, NJ 08052



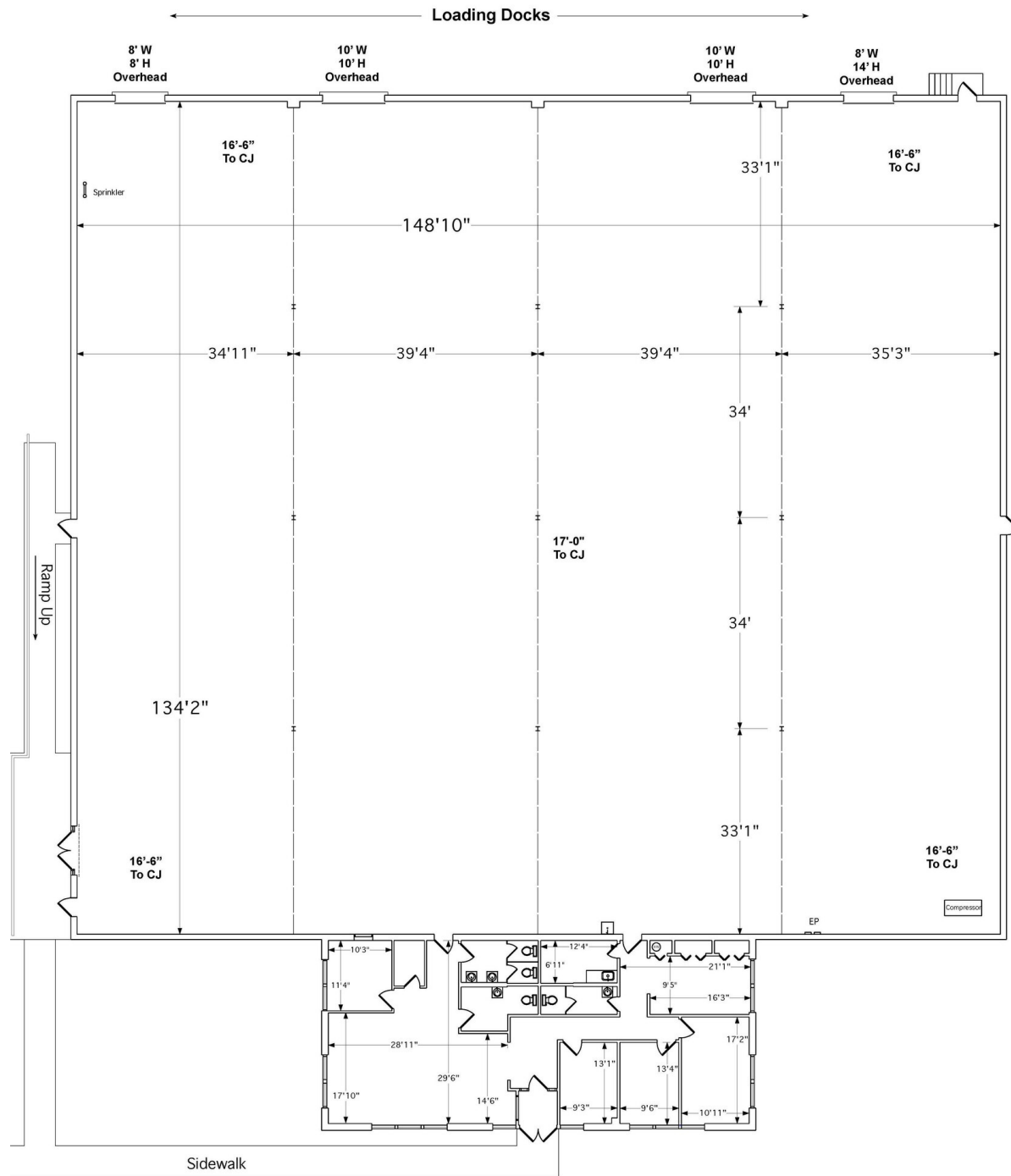
FOR LEASE



INDUSTRIAL



22,689 SF



## FOR MORE INFORMATION

Jonathan Klear

856.433.1801

jonathan.klear@naimertz.com

NAI MERTZ DISCLAIMER: NO WARRANTY OR REPRESENTATION, EXPRESS OR IMPLIED, IS MADE AS TO THE ACCURACY OF THE INFORMATION CONTAINED HEREIN, AND THE SAME IS SUBMITTED SUBJECT TO ERRORS, OMISSIONS, CHANGE OF PRICE, RENTAL OR OTHER CONDITIONS, PRIOR SALE, LEASE OR FINANCING, OR WITHDRAWAL WITHOUT NOTICE, AND OF ANY SPECIAL LISTING CONDITIONS IMPOSED BY OUR PRINCIPALS NO WARRANTIES OR REPRESENTATIONS ARE MADE AS TO THE CONDITION OF THE PROPERTY OR ANY HAZARDS CONTAINED THEREIN ARE ANY TO BE IMPLIED. OUTLINES ARE APPROXIMATE AND SHOWN ONLY TO IDENTIFY THE PARCEL IN CONSIDERATION.

# NAIMertz



NAI Mertz | 21 Roland Avenue  
856.234.9600 | [www.naimertz.com](http://www.naimertz.com)  
Mount Laurel, NJ 08054





# 77 OLD KINGS HIGHWAY

Maple Shade, NJ 08052



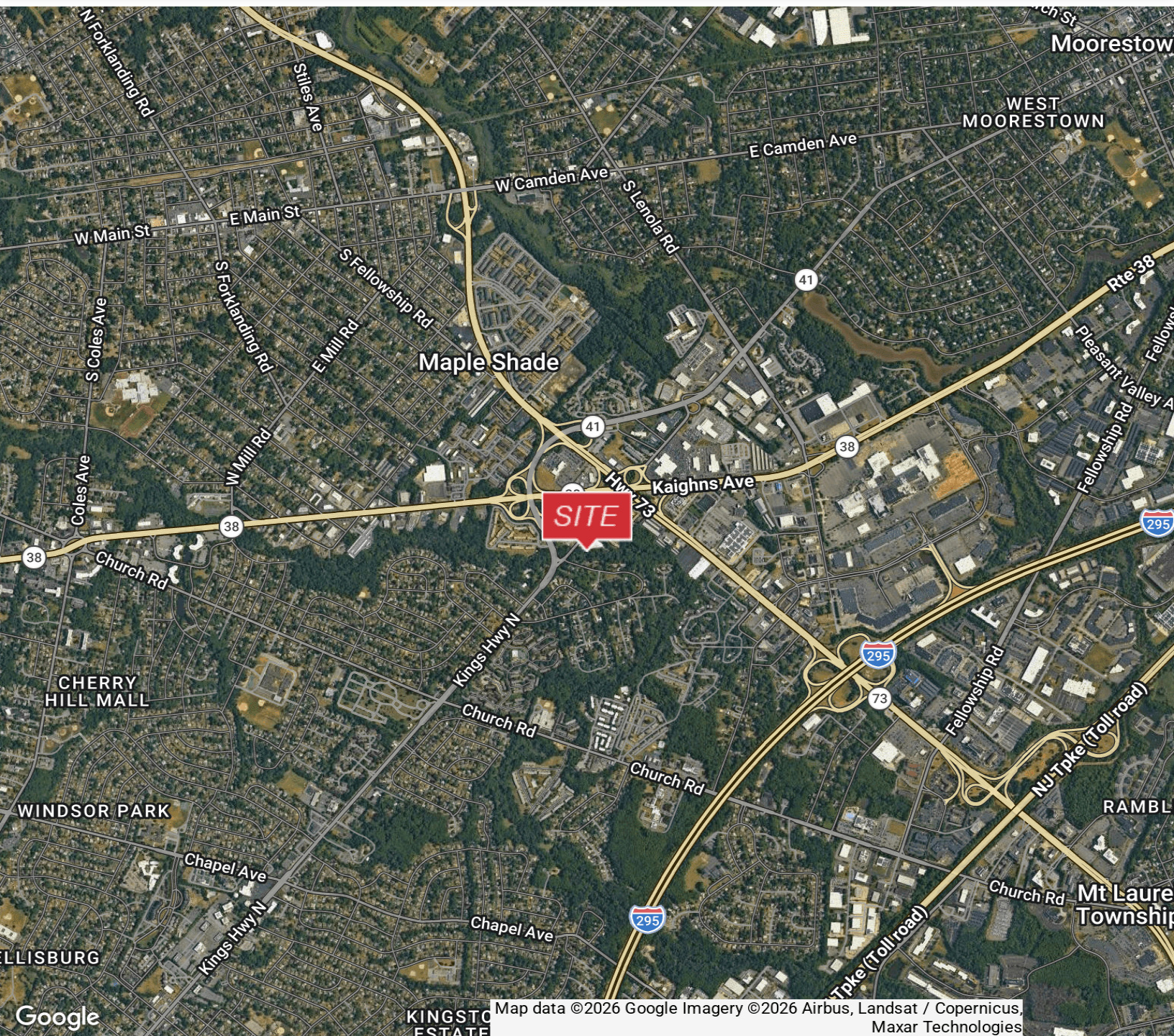
FOR LEASE



INDUSTRIAL



22,689 SF



## FOR MORE INFORMATION

**Jonathan Klear**

📞 856.433.1801

✉️ [jonathan.klear@naimertz.com](mailto:jonathan.klear@naimertz.com)

NAI MERTZ DISCLAIMER: NO WARRANTY OR REPRESENTATION, EXPRESS OR IMPLIED, IS MADE AS TO THE ACCURACY OF THE INFORMATION CONTAINED HEREIN, AND THE SAME IS SUBMITTED SUBJECT TO ERRORS, OMISSIONS, CHANGE OF PRICE, RENTAL OR OTHER CONDITIONS, PRIOR SALE, LEASE OR FINANCING, OR WITHDRAWAL WITHOUT NOTICE, AND OF ANY SPECIAL LISTING CONDITIONS IMPOSED BY OUR PRINCIPALS NO WARRANTIES OR REPRESENTATIONS ARE MADE AS TO THE CONDITION OF THE PROPERTY OR ANY HAZARDS CONTAINED THEREIN ARE ANY TO BE IMPLIED. OUTLINES ARE APPROXIMATE AND SHOWN ONLY TO IDENTIFY THE PARCEL IN CONSIDERATION.

# NAI Mertz



**NAI Mertz** | 21 Roland Avenue  
856.234.9600 | [www.naimertz.com](http://www.naimertz.com)  
Mount Laurel, NJ 08054

