

For Sublease  
**±1,344 SF**  
Class-A Office Space  
near the best of Palm Beach Gardens



**FOR MORE INFORMATION:**

**Lesley Sheinberg**, Managing Director  
561 254 7810 | [lsheinberg@mhcreal.com](mailto:lsheinberg@mhcreal.com)

**Jason L. Sundook, SIOR**, Principal  
561 762 3131 | [jsundook@mhcreal.com](mailto:jsundook@mhcreal.com)

# OAKBROOK CENTER

11760 US Highway One N., Suite W507  
Palm Beach Gardens, FL 33410

## Key Highlights

- Class-A office complex with amazing water views of the Intracoastal, ocean, and surrounding luxury communities
- Lush landscaping, contemporary lobbies, exclusive fitness center, and ample parking
- Minutes to I-95 and Palm Beach Garden's residential communities and conveniences



Sublease through  
7/1/27



Exclusive on-site  
fitness center, with  
2 Peloton Bikes



Stunning  
views

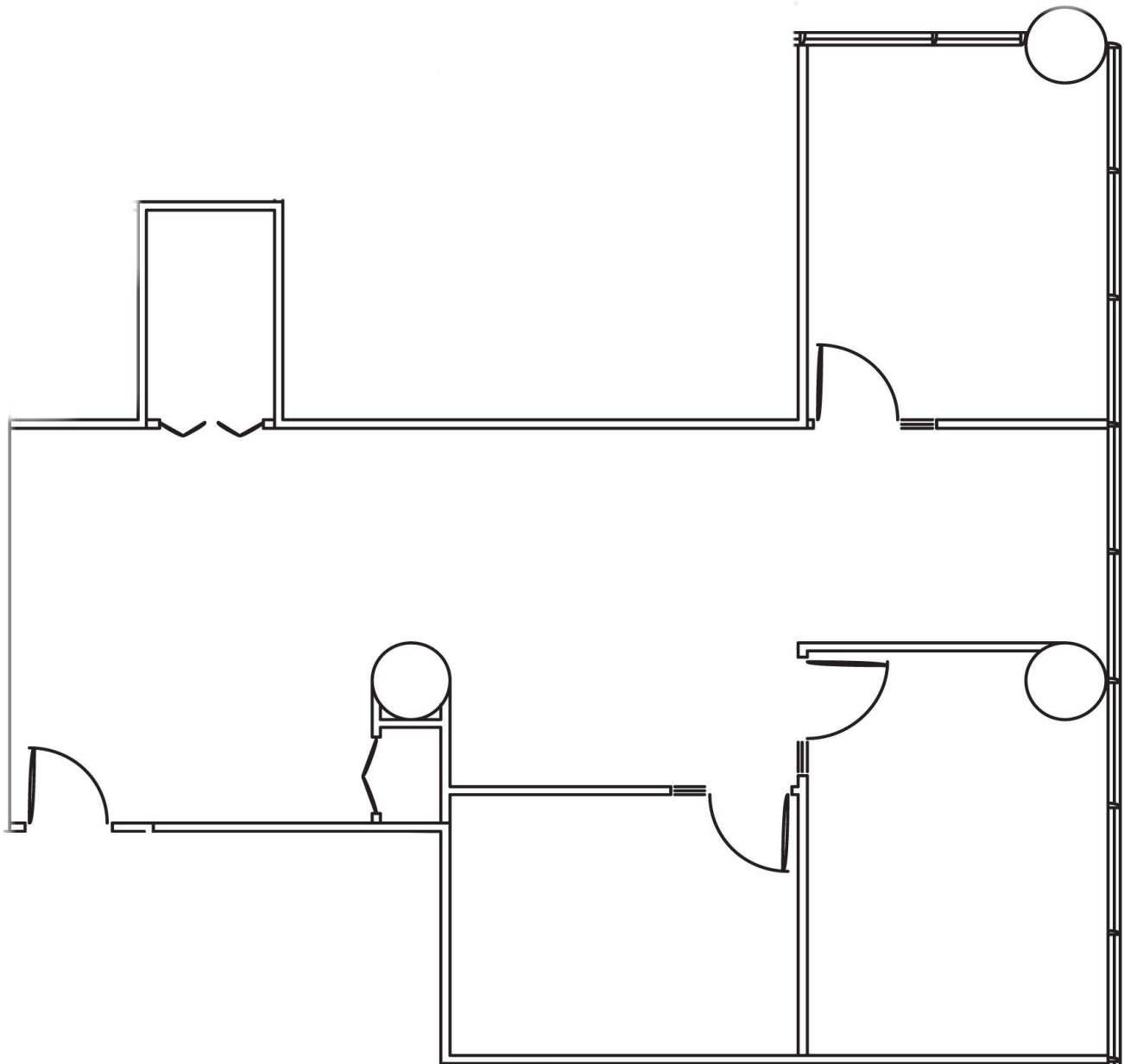


Covered  
parking

FOR SUBLEASE: OAKBROOK CENTER, PALM BEACH GARDENS

## Class A Office Space Sublease Available!

Suite W507 1,344 SF





\*Not to scale. Subject to error. Revised 3/04/24

### FOR MORE INFORMATION:

**Lesley Sheinberg**, Managing Director  
561 254 7810 | [lsheinberg@mhcreal.com](mailto:lsheinberg@mhcreal.com)

**Jason L. Sundook, SIOR**, Principal  
561 762 3131 | [jsundook@mhcreal.com](mailto:jsundook@mhcreal.com)

 561 471 8000

 [www.OakbrookCenter.net](http://www.OakbrookCenter.net)  
[www.mhcreal.com](http://www.mhcreal.com)