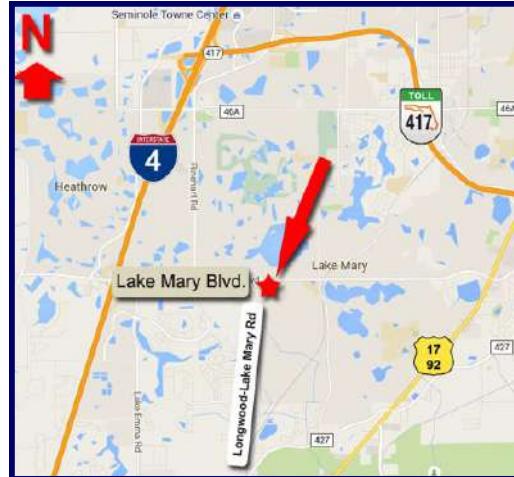


# OAKS AT LAKE MARY

**Your Choice: Restaurant or Retail!**

**3005 W. Lake Mary Blvd. | Lake Mary, FL 32746**



- **3,112 SF** unit within **successful shopping center**. Space can also be utilized as **straight retail** with its **highly-visible**, inline position.
- Oaks at Lake Mary has undergone an almost **\$2 Million** renovation with new **façade, signage, lighting & landscaping!**
- Join fellow tenants **Planet Fitness, Sherwin Williams, Chamberlin's, Dollar Tree and Pizza Hut** for \$32/SF, NNN. **Operating expenses are only \$6.<sup>70</sup>/SF!**
- **Facing the City's busiest corridor**, at a **signalized intersection**.

## 2023 Demographics

	<u>1 Mile</u>	<u>5 Miles</u>	<u>10 Miles</u>
Population:	7,828	161,075	452,957
Avg. HH Income:	\$105,309	\$97,259	\$95,443
2010-22 Growth:	21.45%	13.31%	12.24%

**For more information, contact:**  
**Jim Gruber x230**  
**(407) 786-4001**  
**Jim@QuestCompany.com**



**Quest Company**  
**1180 Spring Centre S. Blvd, Suite 102**  
**Altamonte Springs, FL 32714**  
**(407) 786-4001**

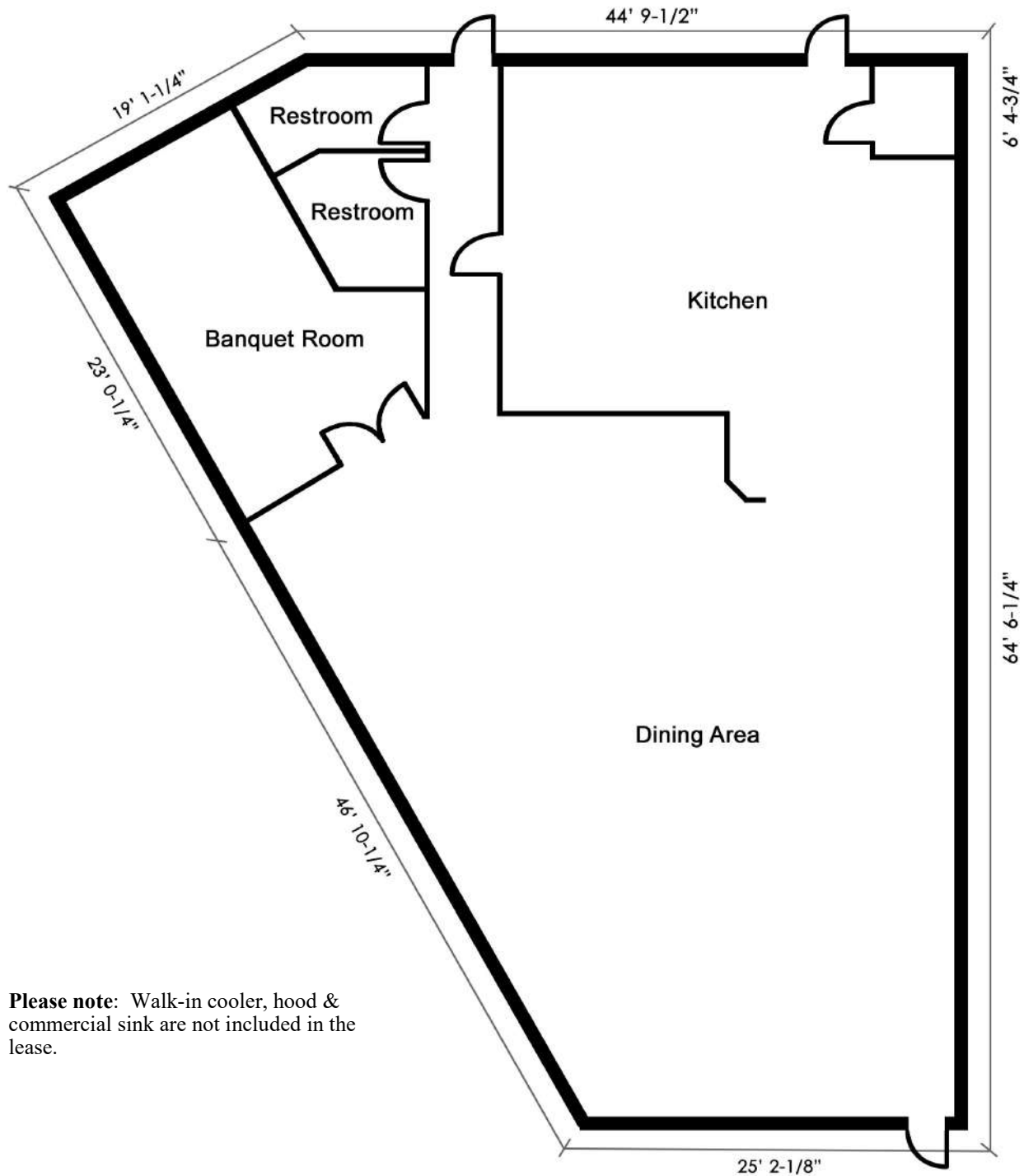
# Oaks at Lake Mary

3005 W Lake Mary Blvd. #112 | 3,112 RSF



# Oaks at Lake Mary

3005 W Lake Mary Blvd. #112 | 3,112 RSF



**Please note:** Walk-in cooler, hood & commercial sink are not included in the lease.

**Disclaimer:** Dimensions shown are deemed to be accurate, but are not guaranteed. Since prior tenant may have altered the interior layout, prospects are encouraged to conduct their own due diligence.