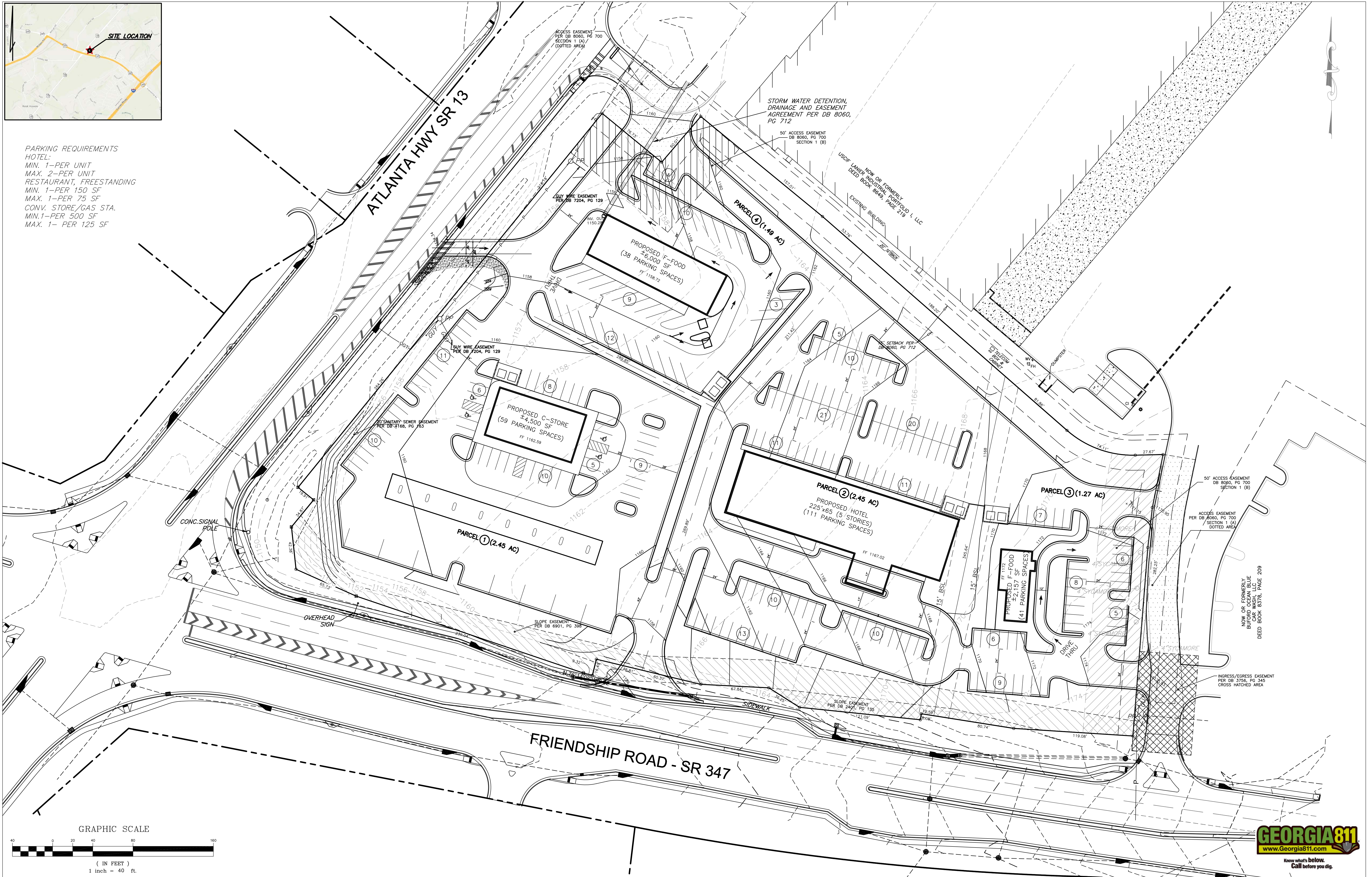
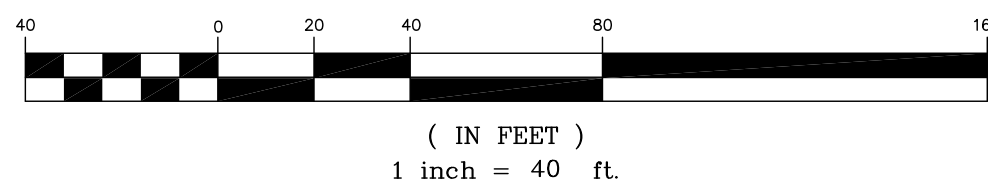




PARKING REQUIREMENTS
HOTEL:
 MIN. 1-PER UNIT
 MAX. 2-PER UNIT
RESTAURANT, FREESTANDING
 MIN. 1-PER 150 SF
 MAX. 1-PER 75 SF
CONV. STORE/GAS STA.
 MIN. 1-PER 500 SF
 MAX. 1-PER 125 SF



GRAPHIC SCALE



REVISIONS

DATE	BY	DESCRIPTION	DATE	BY	DESCRIPTION



DESIGNED BY	NAME	DATE	DRAWN BY	NAME	DATE
WRS	WRS	6/9/21			
CHECKED BY	EB	6/9/21	CHECKED BY		
SUPERVISED BY					

CITY OF BUFORD
 GWINNETT COUNTY, GEORGIA

MPC DEVELOPMENT LLC, SR347
 MASTER PLAN

DRAWING NUMBER
M1



I:\FOR DATA\CIVIL\CITY OF BUFORD\MPC DEVELOPMENT LLC\DESIGN\SR347 MASTER W. OUT.XREF.DWG, 6/15/2021 1:12 PM