



JOHNS DRIVE

1953 JOHNS DRIVE, GLENVIEW, IL

FOR LEASE



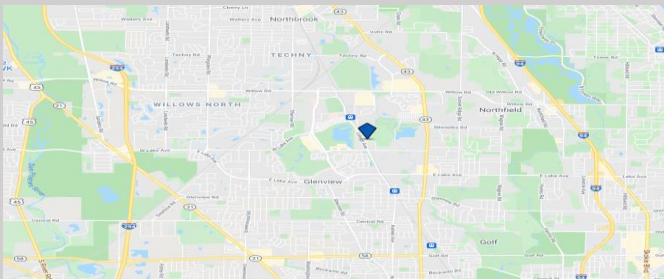
2,433 SF FLEX SPACE

BUILDING HIGHLIGHTS

- 68,075 SF BUILDING
- AMPLE OFF-STREET PARKING
- CLOSE TO I-94 & I-294 EXPY.
- MINUTES FROM TRAIN, BUS, SHOPPING & RESTAURANTS

SUITE HIGHLIGHTS

- 825 SF OFFICE/RECEPTION
- DRIVE-IN DOOR
- 2 PRIVATE RESTROOMS
- SEPARATELY METERED UTILITIES
- 24 HOUR ACCESS



PLEASE CONTACT:

HARLEY KAHN
847.676.0030 EXT.1
INFO@REAPROPERTY.NET

REA COMMERCIAL REAL ESTATE LLC

Information is provided by other sources and are deemed reliable. Information has not been verified. No representation, warranty or guarantee, expressed or implied or by operation of law is made as to the accuracy, reliability or completeness of this information. This material is submitted subject to errors, omissions, changes prior leasing or sales or withdrawal without notice

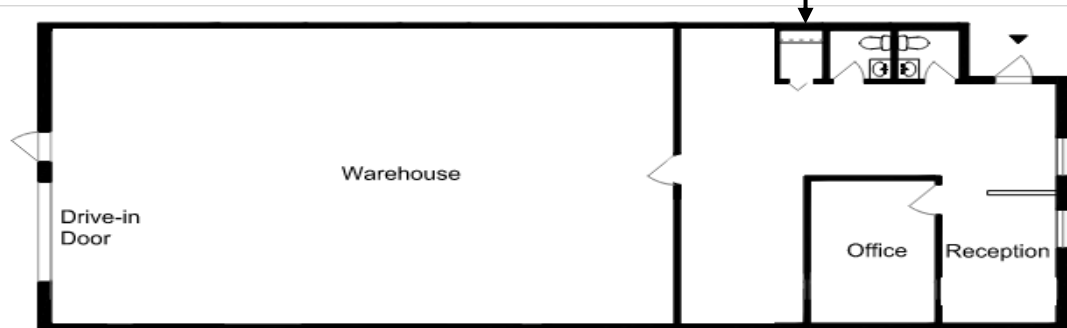
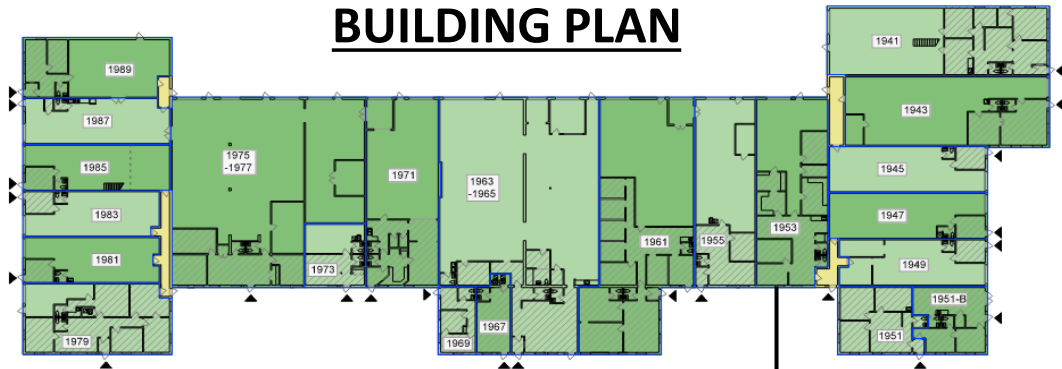


JOHNS DRIVE

1953 JOHNS DRIVE, GLENVIEW, IL

FLOOR PLAN

BUILDING PLAN



SUITE 1953 – 2,433 SF

HARLEY KAHN 847.676.0030 EXT. 1
INFO@REAPROPERTY.NET

REA COMMERCIAL REAL ESTATE LLC

Information is provided by other sources and are deemed reliable. Information has not been verified. No representation, warranty or guarantee, expressed or implied or by operation of law is made as to the accuracy, reliability or completeness of this information. This material is submitted subject to errors, omissions, changes prior leasing or sales or withdrawal without notice