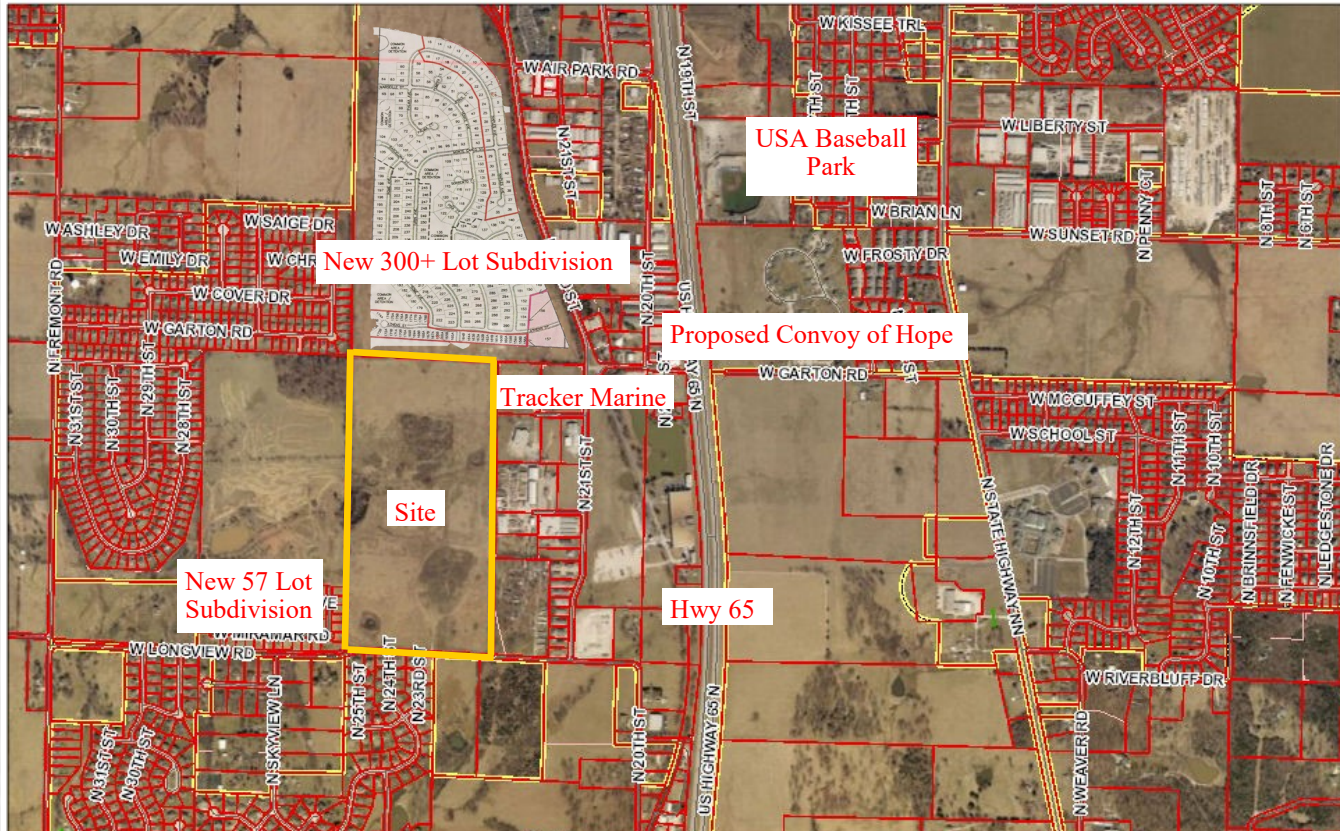


**Prime Development Land
2301 W. Longview Rd.
Ozark, MO 65721**



Property Address: 2301 W. Longview Rd.
Ozark, MO 65721

Asking Price: \$2,350,000.00

Lot Size: 80.55 acres

Remarks: Great development property located in a rapidly growing area of Ozark. Easy access to Highway 65. Close proximity to lots of new development.

"PROVIDING COMMERCIAL REAL ESTATE SOLUTIONS FOR 30 YEARS"

5006 N. 22ND ST. OZARK, MO 65721 ~ OFFICE: (417) 725-5900 ~ MOBILE: (417) 619-4481

WEB SITE: WWW.ESCOMMERCIALGROUP.COM E-MAIL: KYLE@GSTANCER.COM

DISCLAIMER: The information contained is not guaranteed as to its completeness or accuracy, and is submitted by owner without representation or warranty. You are urged to make your own analysis of the contents presented and to investigate and verify to your own satisfaction all factors having a bearing on your decision. It is recommended that your attorney and accountant advise you on all legal and tax matters. Qualified engineers and tradesman are recommended for determining questions on all physical aspects of site and improvements.