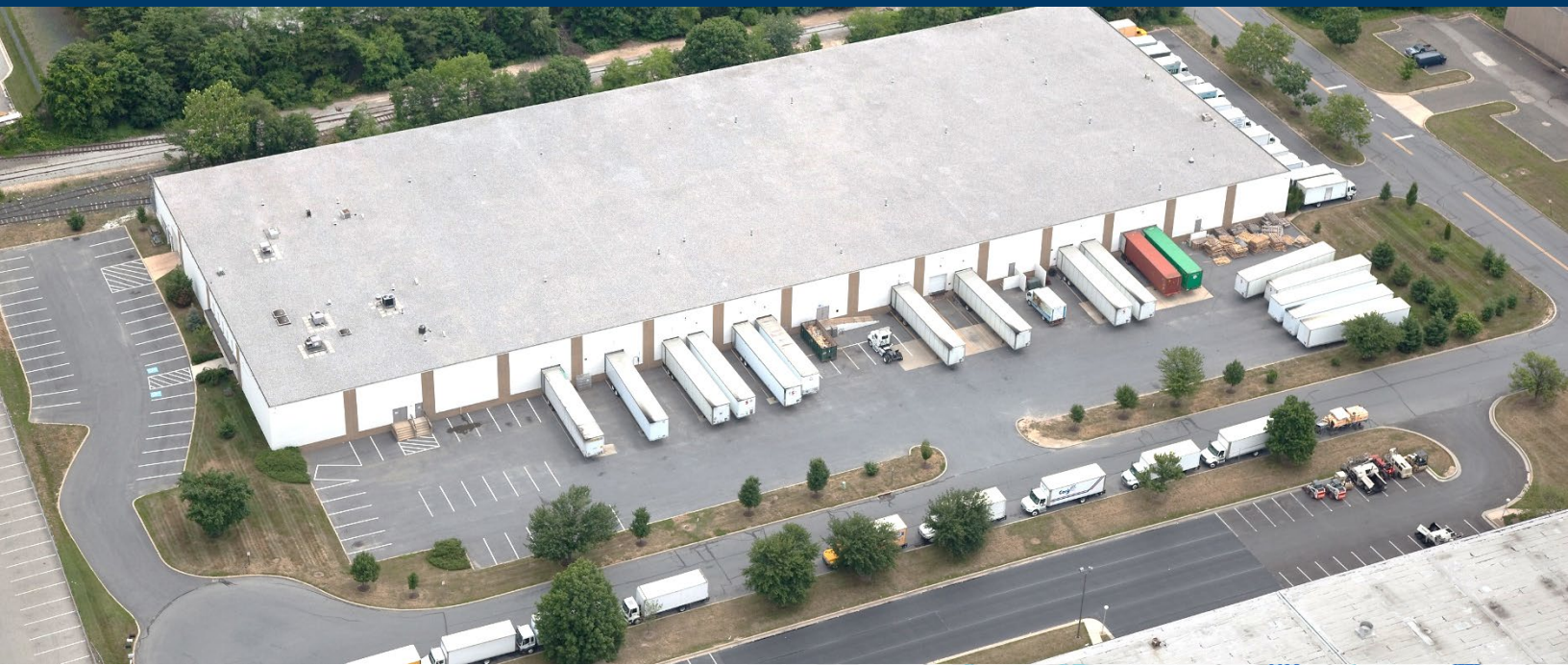


FOR LEASE OR SALE

# 8210 Wellmoor Court

Laurel, MD 20708



## PROPERTY HIGHLIGHTS

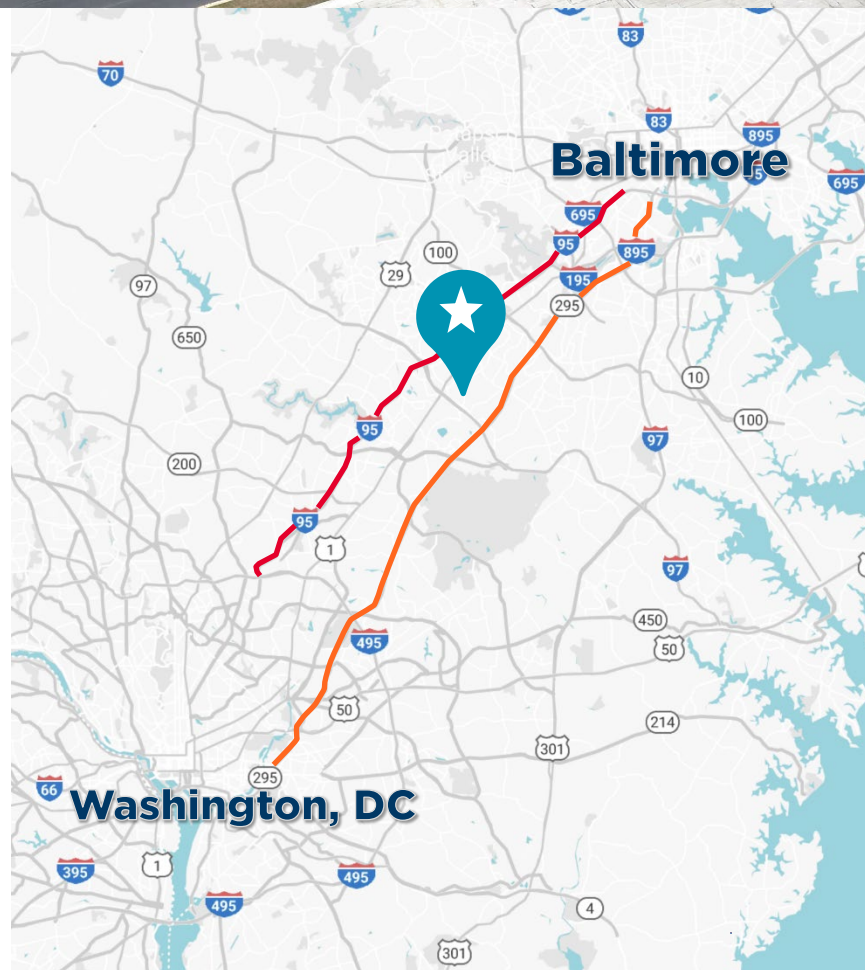
Available: 53,333 SF

Loading: -5 docks  
-1 oversized door (20' x 10')  
-Room for additional doors

Clear Height: 18'

Column Spacing: 30'w x 37'd

Trailer Storage: 8 stalls



**Steele Stanwick**

Director

+1 410 685 9875

steele.stanwick@cushwake.com

**Jarred Testa**

Executive Managing Director

+1 410 953 6683

jarred.testa@cushwake.com

FOR LEASE OR SALE

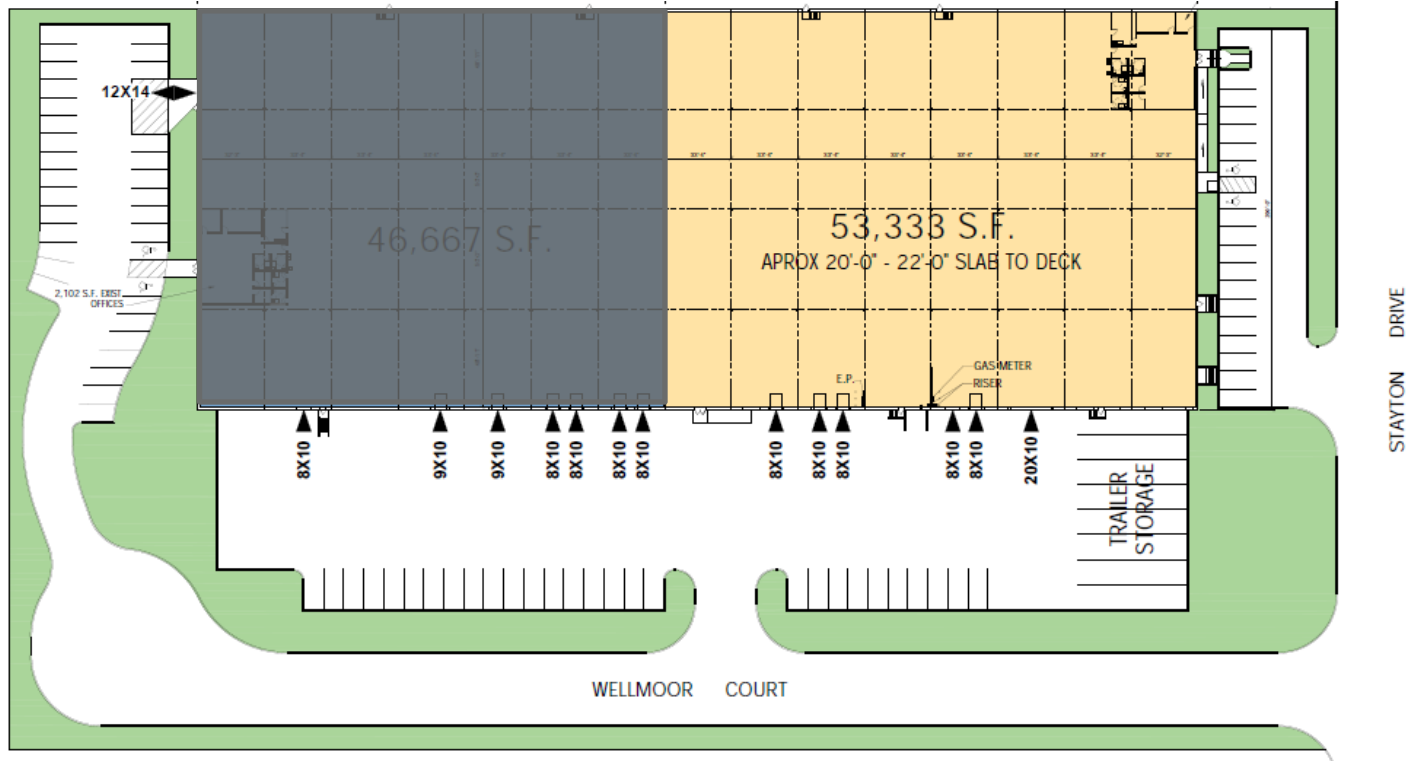
# 8210 Wellmoor Court

Laurel, MD 20708



**CUSHMAN &  
WAKEFIELD**

## FLOOR PLAN



### Steele Stanwick

Director

+1 410 685 9875

[steele.stanwick@cushwake.com](mailto:steele.stanwick@cushwake.com)

### Jarred Testa

Executive Managing Director

+1 410 953 6683

[jarred.testa@cushwake.com](mailto:jarred.testa@cushwake.com)

One East Pratt Street

Suite 700

Baltimore, MD 21202

+1 410 752 4285

[cushmanwakefield.com](http://cushmanwakefield.com)