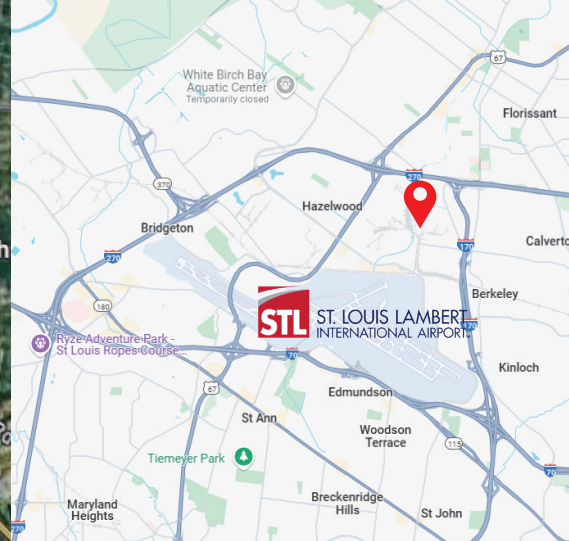
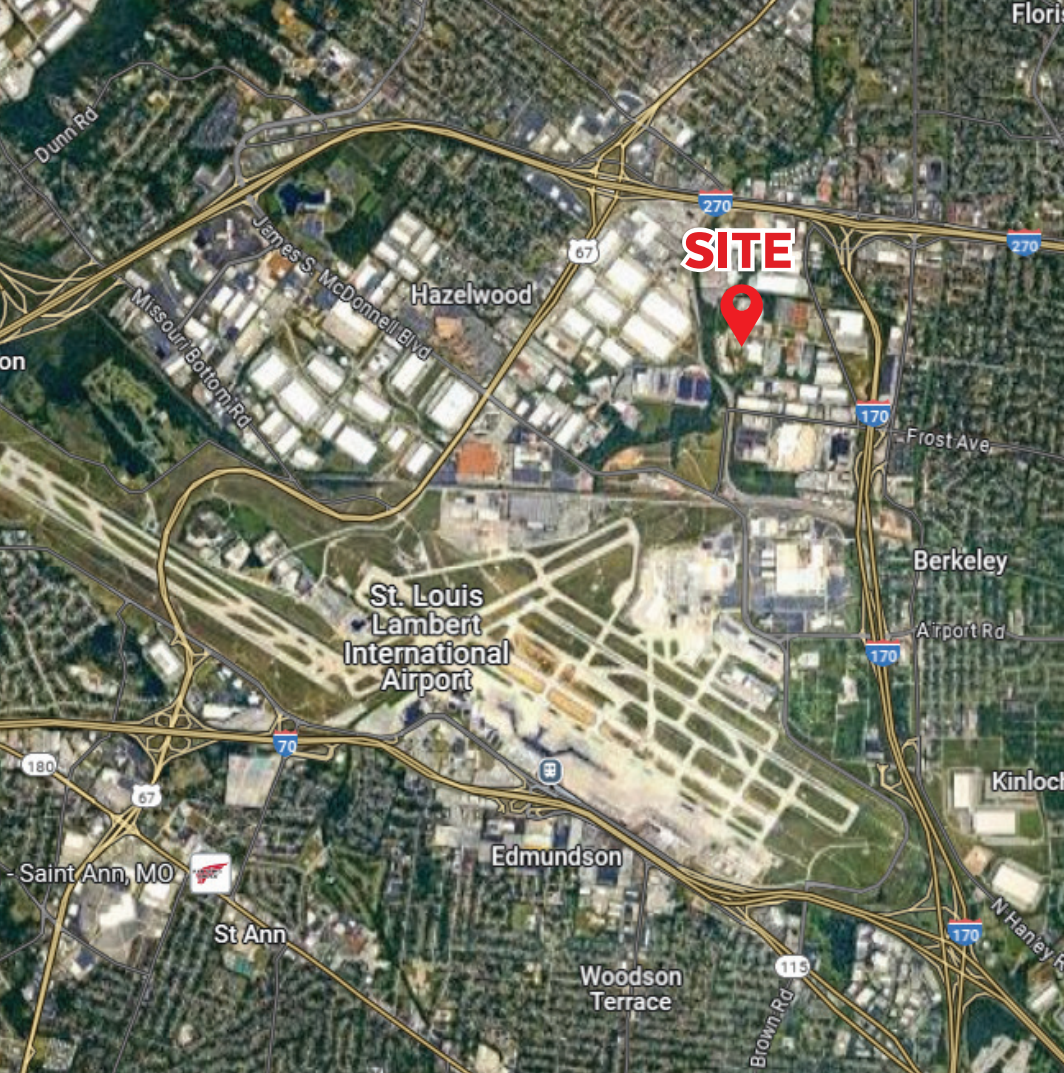


# INDUSTRIAL LAND FOR LEASE



**9170 Latty Avenue | Hazelwood, MO 63134**

## PROPERTY HIGHLIGHTS

- 5.4± Acres
- Outstanding location in the heart of St. Louis County
- Immediate access to I-70, I-170 and I-270
- Six miles from St. Louis Lambert International Airport
- Perfect for industrial development, truck parking, storage facility
- Sub dividable, fenced and rocked
- Ideal for outdoor storage
- Zoned I-2 (Heavy Industrial District zoning) City of Hazelwood
- **Lease Rate: \$0.86 SF Modified Gross**



**Cameron Cook**

Associate  
Mobile: 314-480-2022  
cook@gundakercommercial.com



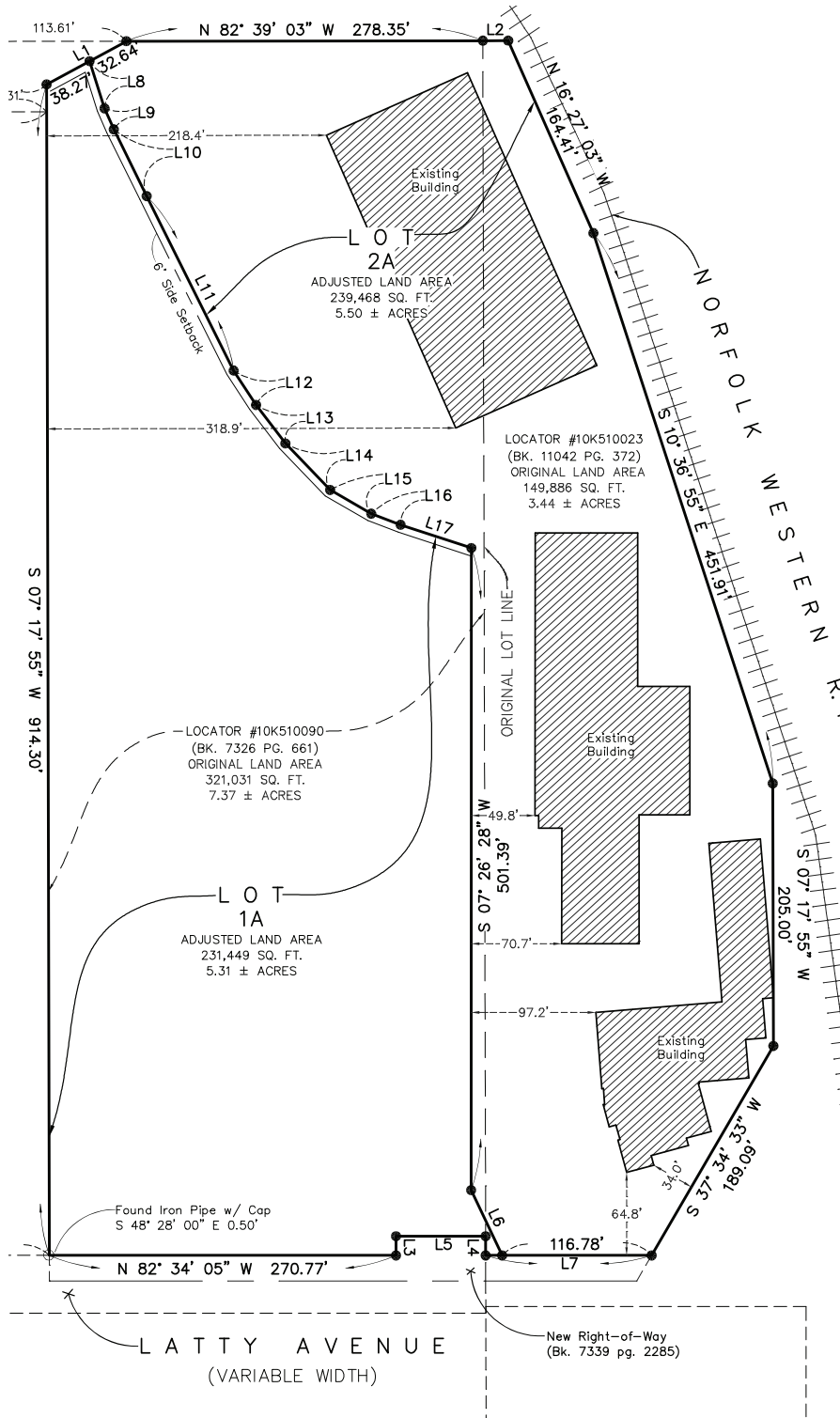
**Jim Alexander**

Vice President  
Mobile: 314-954-0540  
jalexander@gundakercommercial.com



**GUNDAKER**  
COMMERCIAL GROUP

55 Westport Plaza Drive, Suite 200  
St. Louis, MO 63146  
636-728-5100  
www.gundakercommercial.com



**Cameron Cook**  
Associate  
Mobile: 314-480-2022  
ccook@gundakercommercial.com



**Jim Alexander**  
Vice President  
Mobile: 314-954-0540  
jalexander@gundakercommercial.com



**GUNDAKER**  
COMMERCIAL GROUP

55 Westport Plaza Drive, Suite 200  
St. Louis, MO 63146  
636-728-5100  
www.gundakercommercial.com