

# FOR LEASE



**4905 Montgomery Lane  
Bethesda, MD 20814**

*Rare opportunity to lease one of the few  
remaining updated office houses in  
Downtown Bethesda.*

*Walk to Metro and all of Bethesda's  
dining and shopping.*

*Free parking.*

**AMR**  
COMMERCIAL, LLC.  
ALEXANDER, MONTROSE, RITTENBERG  
Commercial Real Estate Brokerage  
Est. 1994

*Celebrating*  
**32**  
*Years*  
**1994-2026**

Although all information furnished is from sources we deem reliable, such information has not been verified and no express representation is made nor is any to be implied as to the accuracy thereof, and it is submitted subject to errors, omissions, or other conditions.

**For More Information  
Please Contact:**

**MARK RITTENBERG | [mark@amrcommercial.com](mailto:mark@amrcommercial.com) | 301.961.9696 | [AMRCommercial.com](http://AMRCommercial.com)**

**2,524+/-S.F.  
Plus Basement**

**Zoned CR**

**Up to 6 free parking spaces**

**3 to 5-year lease term**

**Signage Available**



**Walk Score®**

**97 – Walker's Paradise**

**Daily errands do not require a car**



**Ranked #1 Top Earning Town  
by median family income  
according to Money Magazine**



**#1 Richest small city  
in America  
according to Movoto.com**



**Best city for college grads  
according to Livability.com**



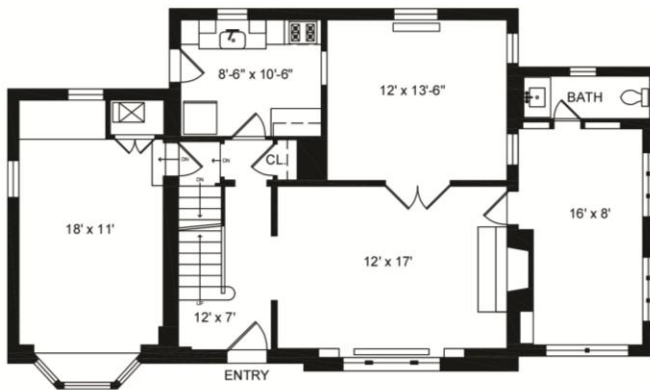
**#1 Most Educated City  
in the U.S.  
according to NerdWallet.com**



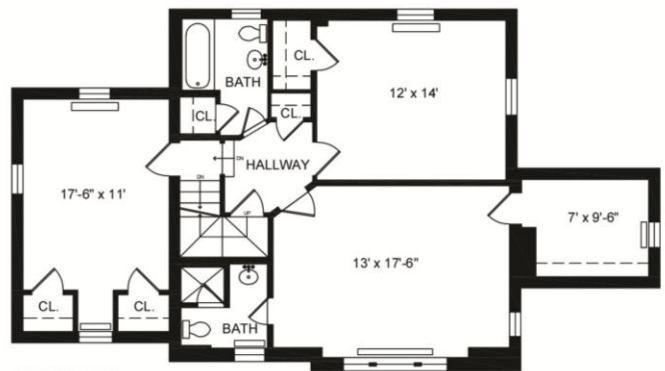
# FOR LEASE

**4905 Montgomery Lane  
Bethesda, MD 20814**

**2,524+/-S.F.  
Plus Basement**



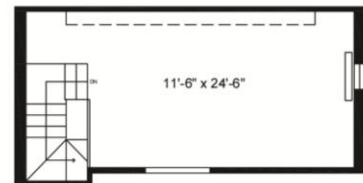
FIRST FLOOR:  
1,163 SF



SECOND FLOOR:  
1,025 SF



BASEMENT:  
645 SF



ATTIC:  
336 SF

ALL MEASUREMENTS ARE APPROXIMATE. WHILE DEEMED RELIABLE,  
NO INFORMATION ON THESE FLOOR PLANS SHOULD BE RELIED  
UPON WITHOUT INDEPENDENT VERIFICATION

Although all information furnished is from sources we deem reliable, such information has not been verified and no express representation is made nor is any to be implied as to the accuracy thereof, and it is submitted subject to errors, omissions, or other conditions.

**For More Information  
Please Contact:**

**MARK RITTENBERG | [mark@amrcommercial.com](mailto:mark@amrcommercial.com) | 301.961.9696 | [AMRCommercial.com](http://AMRCommercial.com)**

**4849 Rugby Avenue ♦ Suite 200 ♦ Bethesda, Maryland 20814 ♦ 301.961.9696 ♦ Fax 301.656.7551 ♦ [www.amrcommercial.com](http://www.amrcommercial.com)**



