

AHWATUKEE

office plaza

11011 S. 48TH STREET | PHOENIX, AZ 85044



OFFICE SPACE

CBRE

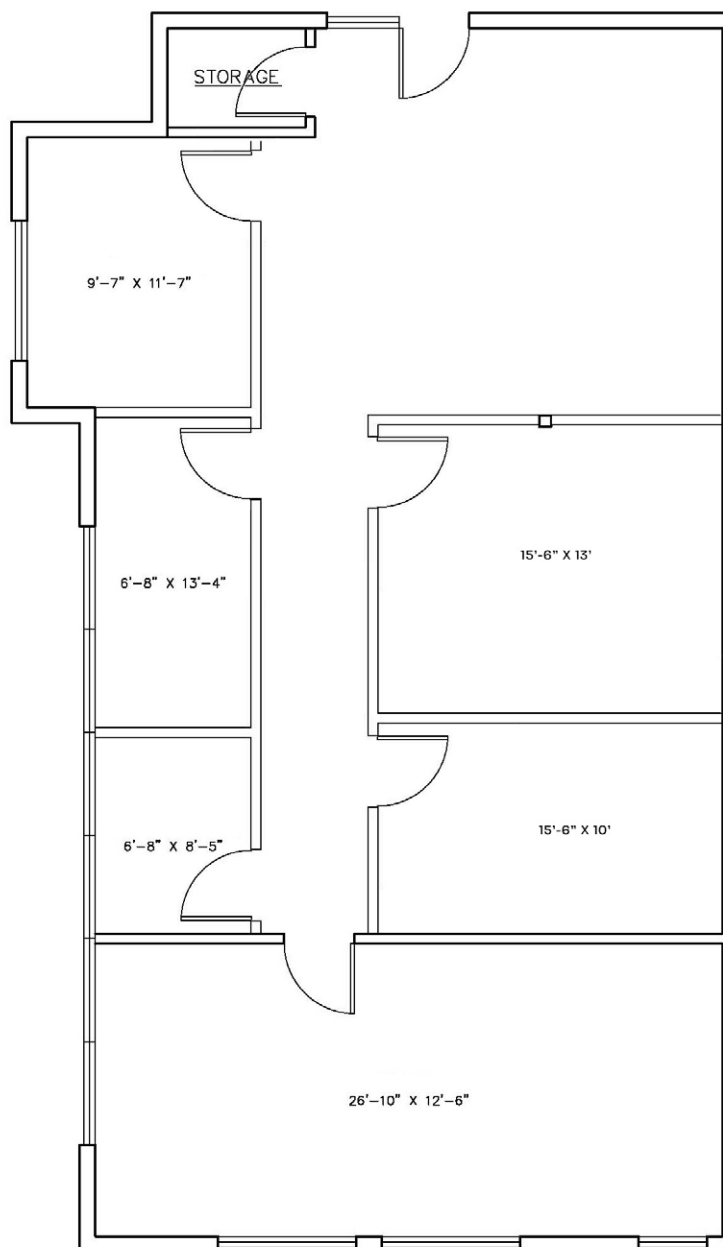
PROPERTY FEATURES

- Building is ±20,112 SF with basement space available
- Monument Signage along 48th Street
- Within Close Proximity to Arizona Grand Resort, Numerous Restaurants and Retail Amenities
- Ideal for Professional Office/Medical User
- Availabilities are Fully Built out and move-in ready
- Convenient access to I-10 and US-60 & minutes from Sky Harbor International Airport



AVAILABILITY

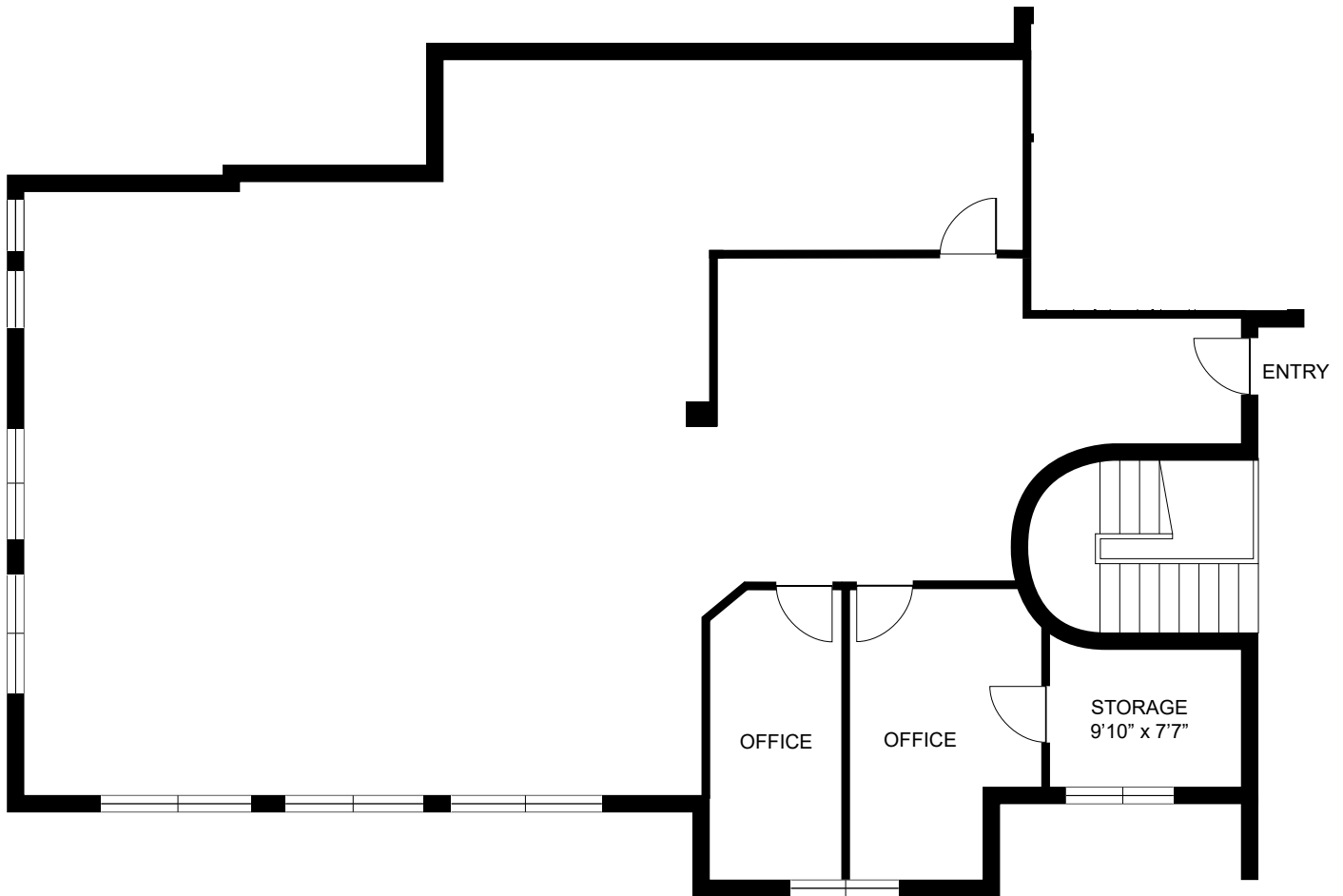
- Suite 210-B: ±1,593 SF
- Rental Rate \$22.00/SF Full Service (Net of Interior Janitorial Service)



NOT TO SCALE
ALL MEASUREMENTS ARE
APPROXIMATE

AVAILABILITY

- Suite 220: ±2,393 SF
- Rental Rate \$22.00/SF Full Service (Net of Interior Janitorial Service)



NOT TO SCALE
ALL MEASUREMENTS ARE
APPROXIMATE

AHWATUKEE office plaza

11011 S. 48TH STREET | PHOENIX, AZ 85044



AHWATUKEE
office plaza

W ELLIOT ROAD

S 48TH STREET

S 51ST STREET



NOT TO SCALE



CONTACT US:

BRUCE SUPPES

M +1 520 979 2967

bruce.suppes@cbre.com

JAMIE SWIRTZ

+1 602 735 5630

jamie.swirtz@cbre.com

CBRE

© 2025 CBRE, Inc. All rights reserved. This information has been obtained from sources believed reliable but has not been verified for accuracy or completeness. CBRE, Inc. makes no guarantee, representation or warranty and accepts no responsibility or liability as to the accuracy, completeness, or reliability of the information contained herein. You should conduct a careful, independent investigation of the property and verify all information. Any reliance on this information is solely at your own risk. CBRE and the CBRE logo are service marks of CBRE, Inc. All other marks displayed on this document are the property of their respective owners, and the use of such marks does not imply any affiliation with or endorsement of CBRE. Photos herein are the property of their respective owners. Use of these images without the express written consent of the owner is prohibited.