



2020 Baltimore

Kansas City, MO

1,562 SF Ground Floor Retail Space Available

Jayme Miller
+ 1 816 261 2006
jayme.miller@jll.com

Patrick Meraz, CCIM
+ 1 913 469 4622
patrick.meraz@jll.com

PROPERTY OVERVIEW

2020 Baltimore Ave.,
Kansas City, MO



\$23.50/SF Full Service Lease Rate
Rate includes utilities and CAM



Attractive brick and timber build out with access to rooftop deck



Convenient parking 3/1,000 SF

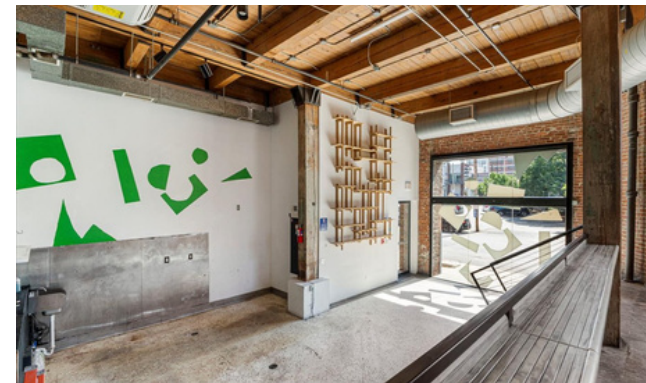
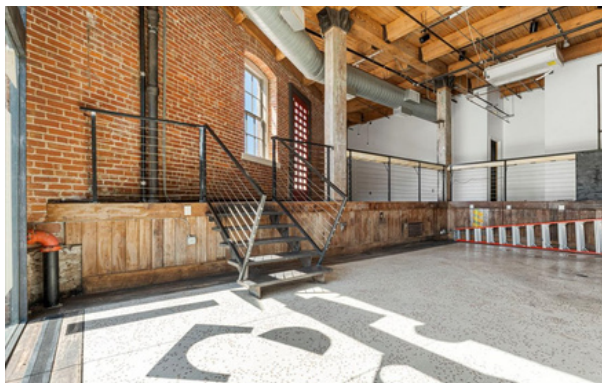
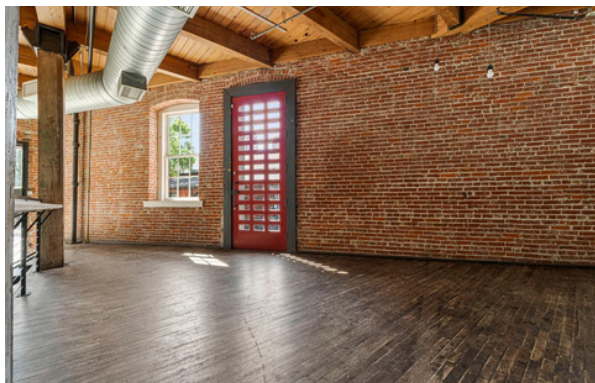
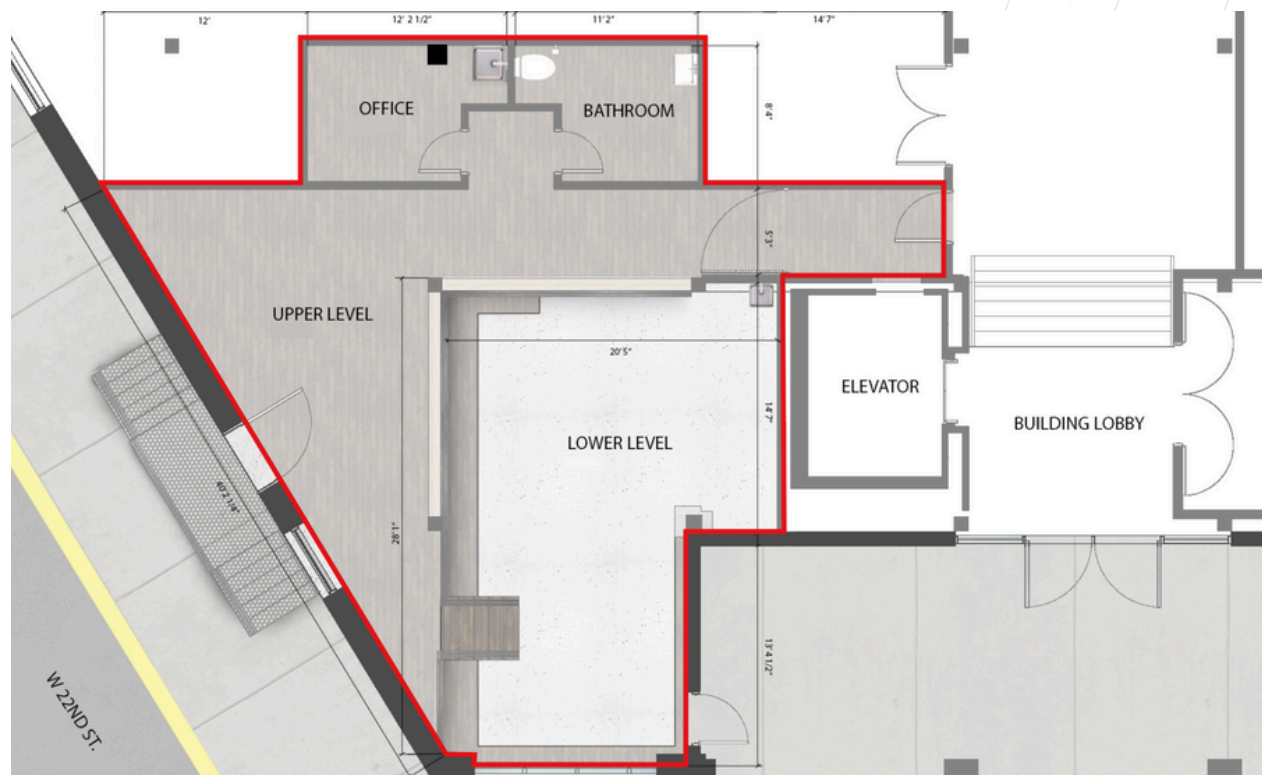


Located in the heart of the
Crossroads district; prime location for
First Fridays

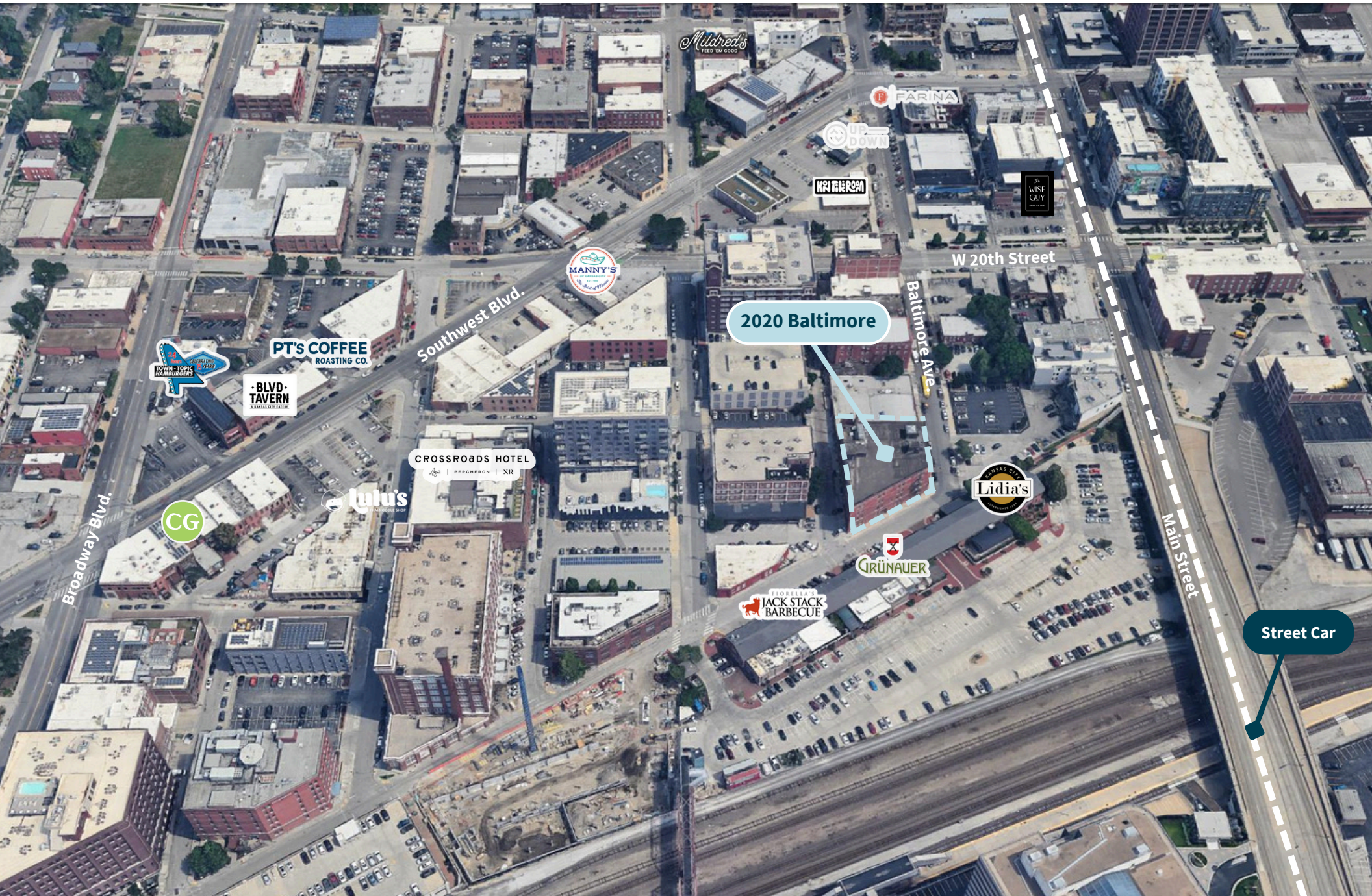


Walkable to the Streetcar, and an
array of restaurants, retail, and hotels

Suite 102 - 1,562 RSF



SURROUNDING AREA



PARKING OPTIONS

The image is an aerial photograph of an urban area in Baltimore. The central focus is a large, multi-story brick building with a flat roof. The side of the building features faded red lettering that reads "MARLETTA CHAIR COMPANY WHOLESAL FURNITURE". A light blue callout bubble with the text "2020 Baltimore" is positioned above the building. To the left of the building, a street is labeled "Baltimore Ave." in a light blue callout bubble. To the right of the building, a street is labeled "Main Street" in a light blue callout bubble. The area is filled with various parking lots and streets. Four numbered circles (1, 2, 3, 4) are placed on the image to indicate specific parking options. A legend on the left side of the image lists the corresponding names for these options: 1. 2020 Baltimore Parking, 2. Garage Entry, 3. Alley Parking, and 4. Freight House Parking. The background shows a mix of urban architecture, including older brick buildings and modern structures, as well as a large parking lot with many cars.

1 2020 Baltimore Parking

2 Garage Entry

3 Alley Parking

4 Freight House Parking

2020 Baltimore

Baltimore Ave.

Main Street

2020 Baltimore Parking

Garage Entry

Alley Parking

Freight House Parking

Main Street

4

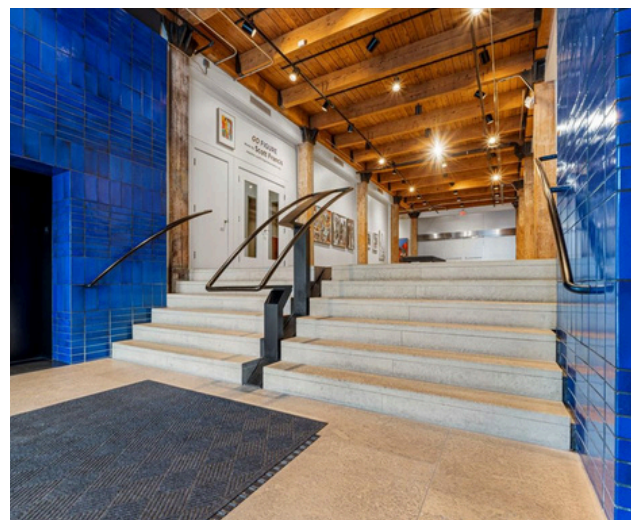
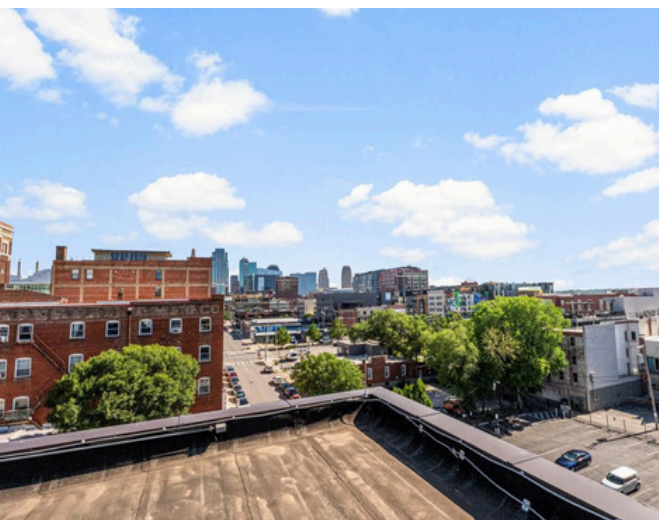
1

2020 Baltimore

Baltimore Ave.

2

3



JLL

Jayme Miller
+ 1 816 261 2006
jayme.miller@jll.com

Patrick Meraz, CCIM
+ 1 913 469 4622
patrick.meraz@jll.com

Although information has been obtained from sources deemed reliable, JLL does not make any guarantees, warranties or representations, express or implied, as to the completeness or accuracy as to the information contained herein. Any projections, opinions, assumptions or estimates used are for example only. There may be differences between projected and actual results, and those differences may be material. JLL does not accept any liability for any loss or damage suffered by any party resulting from reliance on this information. If the recipient of this information has signed a confidentiality agreement with JLL regarding this matter, this information is subject to the terms of that agreement. ©2025 Jones Lang LaSalle Brokerage, Inc. All rights reserved.