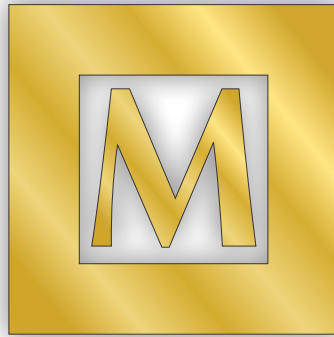


The



135 E BADILLO STREET
COVINA CALIFORNIA 91723

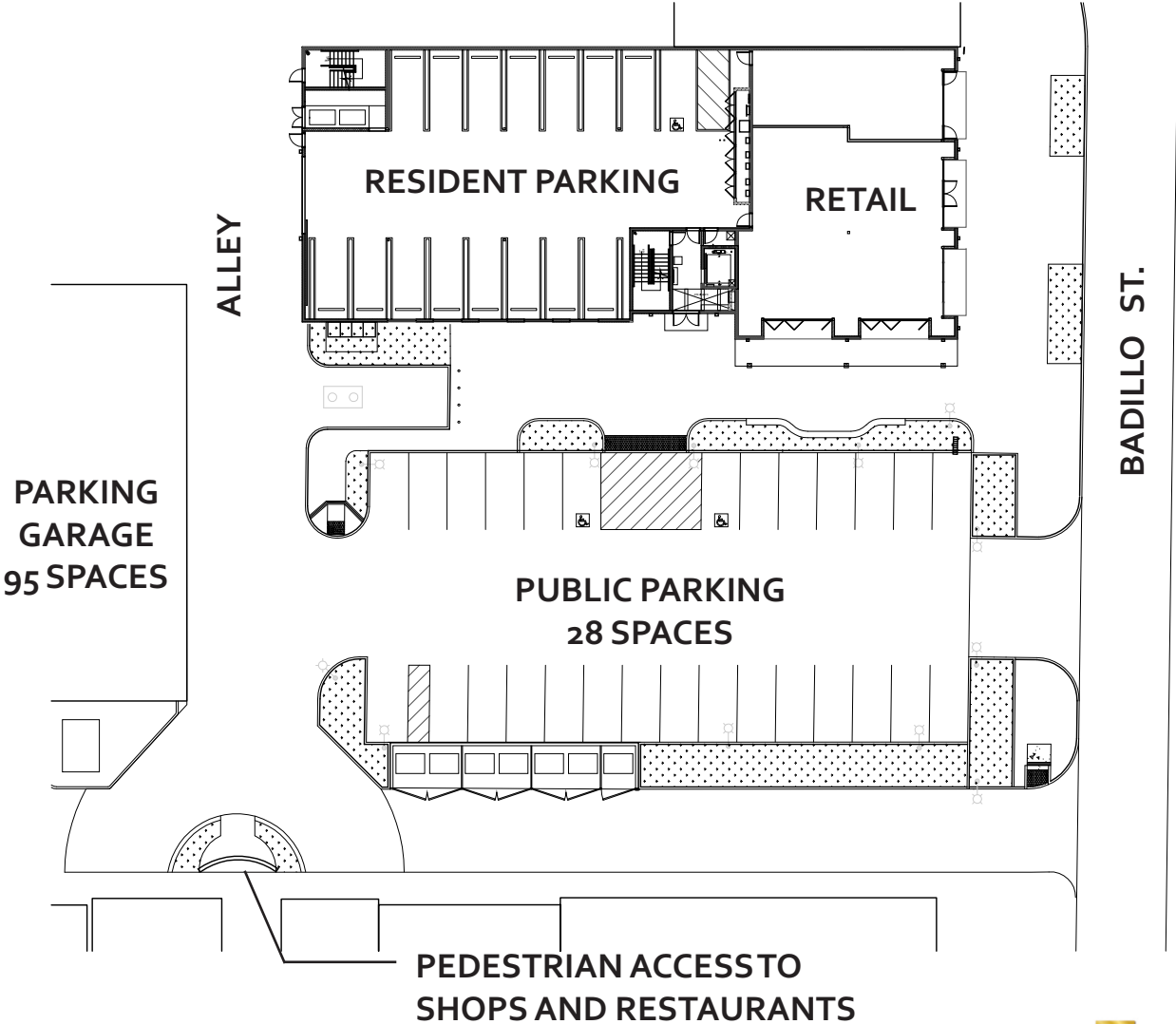


THE **McINTYRE**
C O M P A N Y
DEVELOPERS OF INVESTMENT PROPERTIES

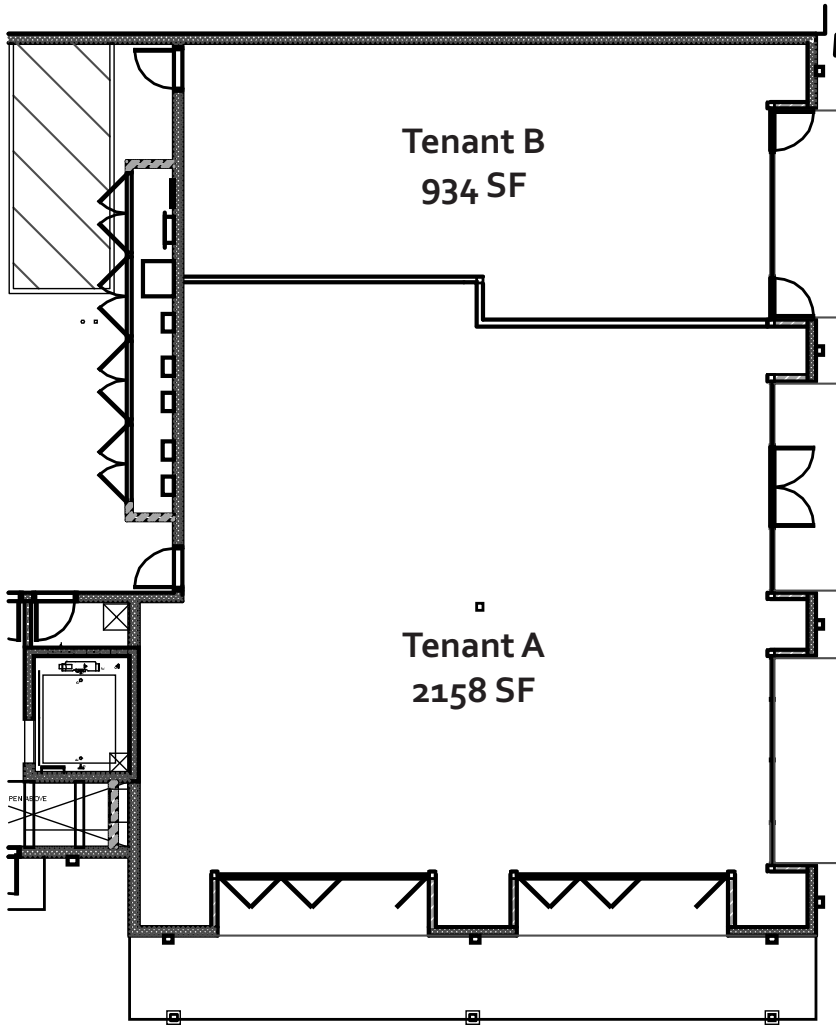
SITE PLAN:



View of adjacent public parking and promenade



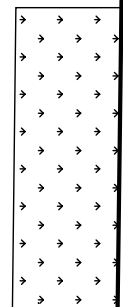
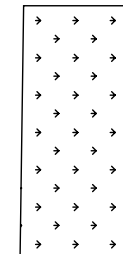
RETAIL SPACE:



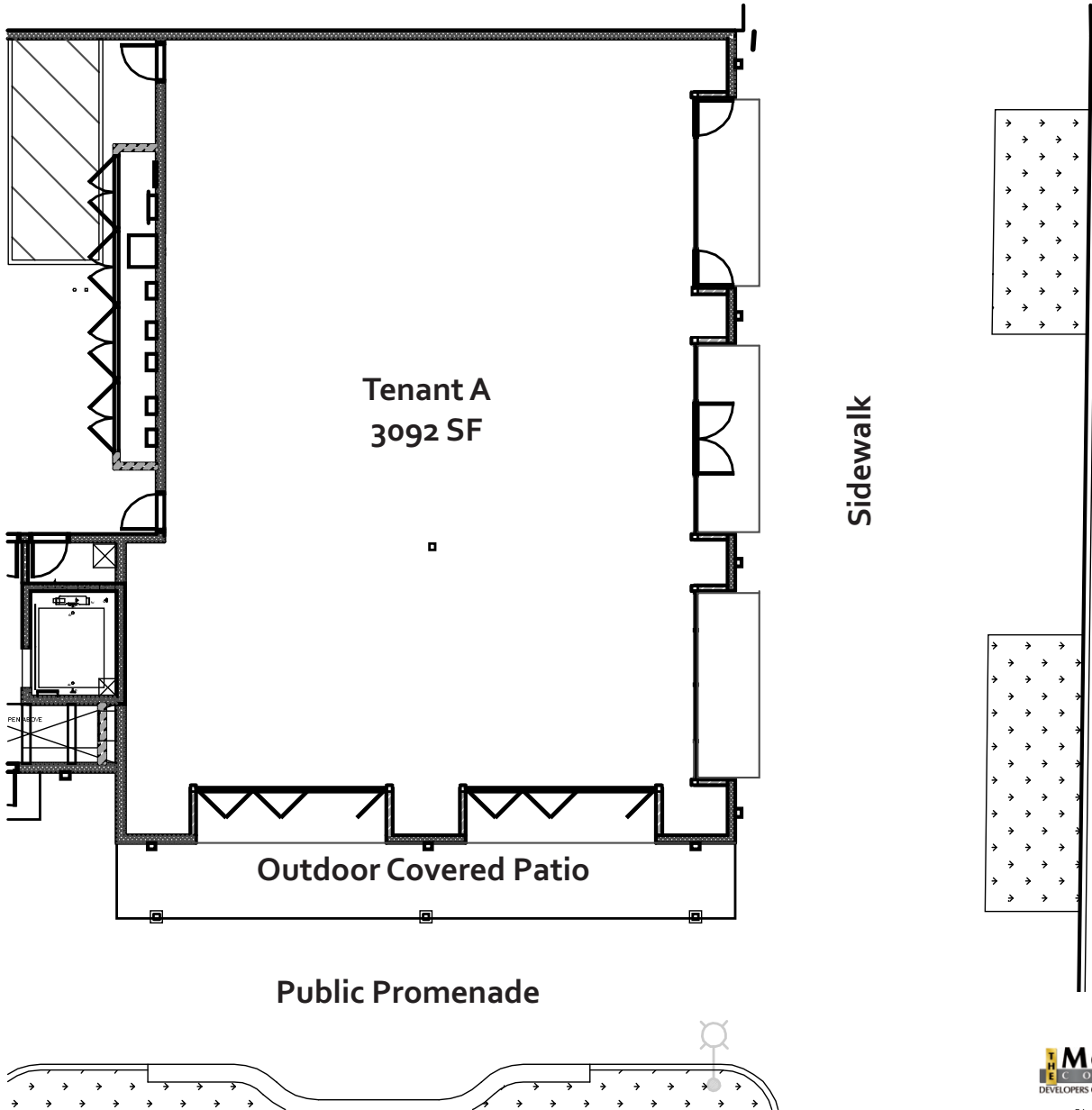
Sidewalk

BADILLO ST.

Public Promenade



RETAIL SPACE:



LUXURY LIVING:

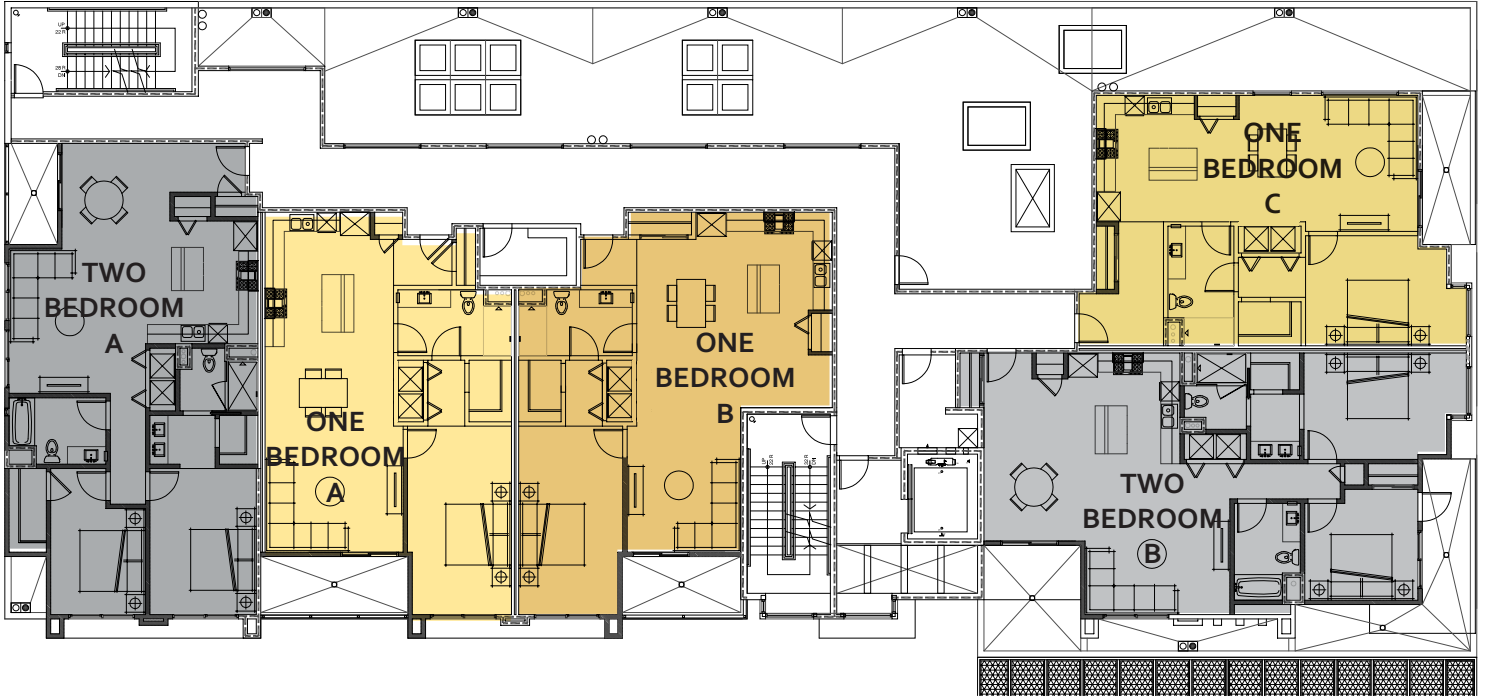


ED USE
ring

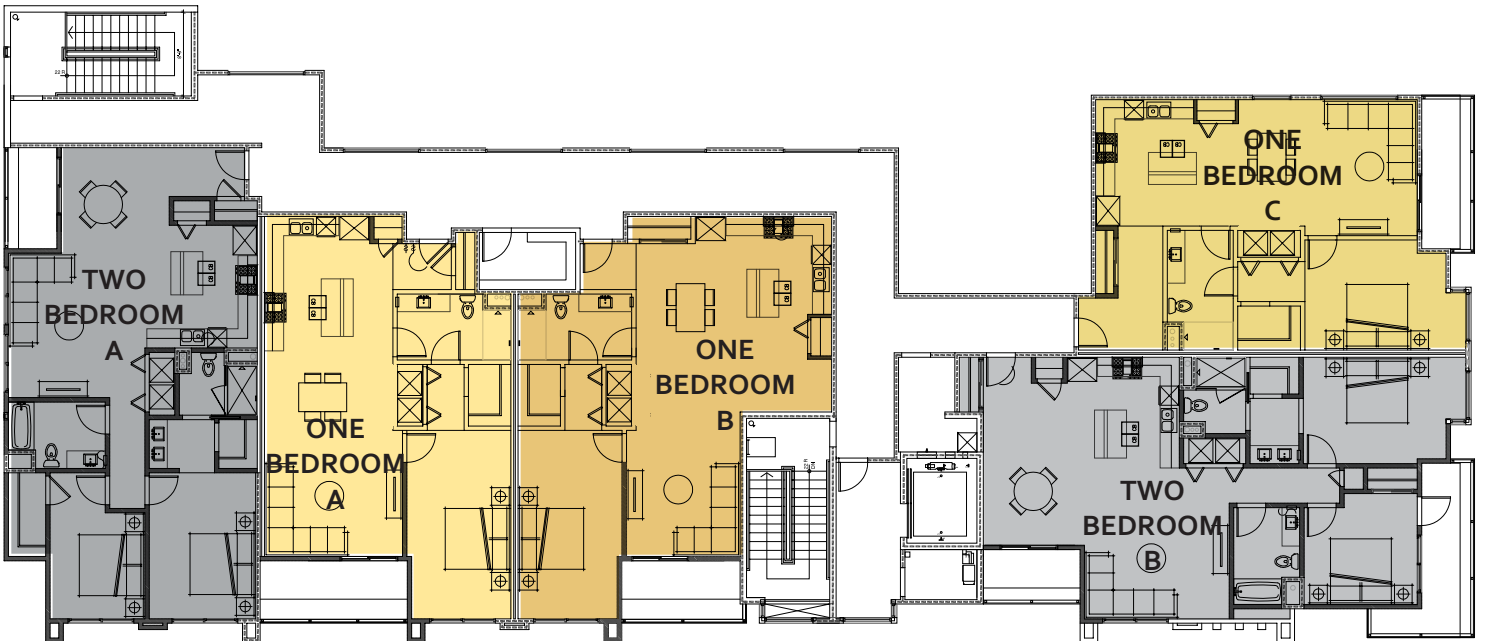
**Modern living spaces.
Close to work, shopping, dining and entertainment.**

RESIDENTIAL LEVELS:

LEVEL 2:



LEVEL 3:

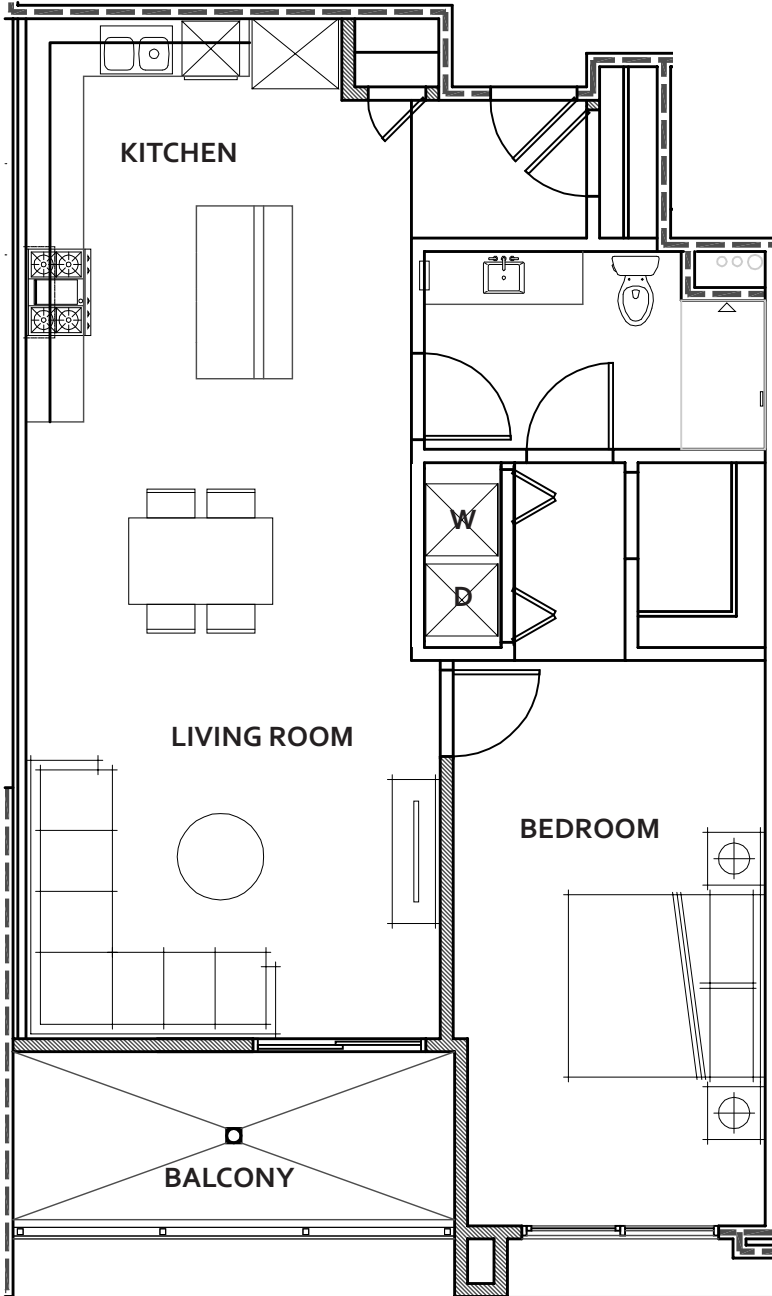


1 BEDROOM UNIT A:

985 SF

11' CEILING HEIGHT

Balconies vary by floor refer to overall plan for balcony extents.

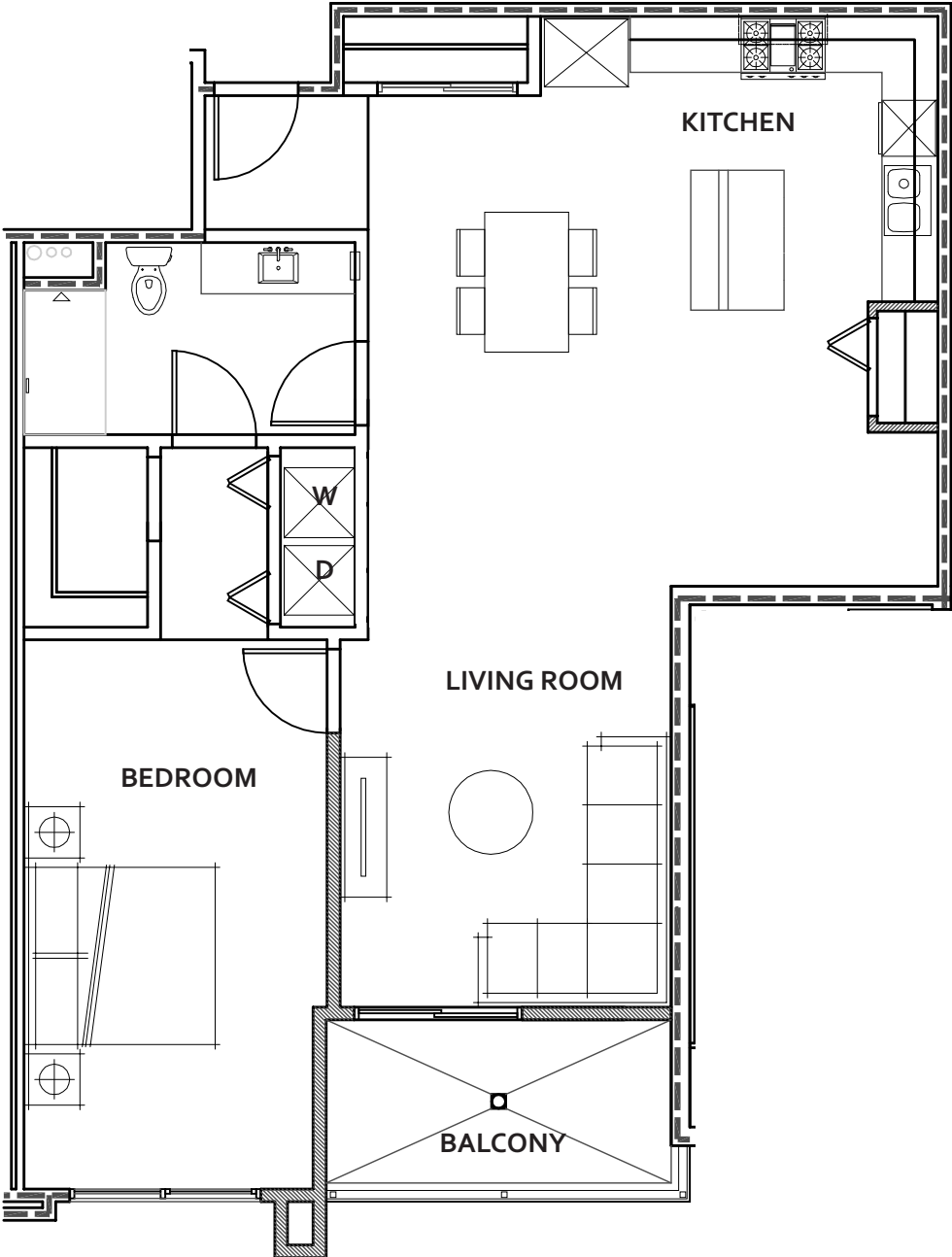


1 BEDROOM UNIT B:

1077 SF

11' CEILING HEIGHT

Balconies vary by floor refer to overall plan for balcony extents.

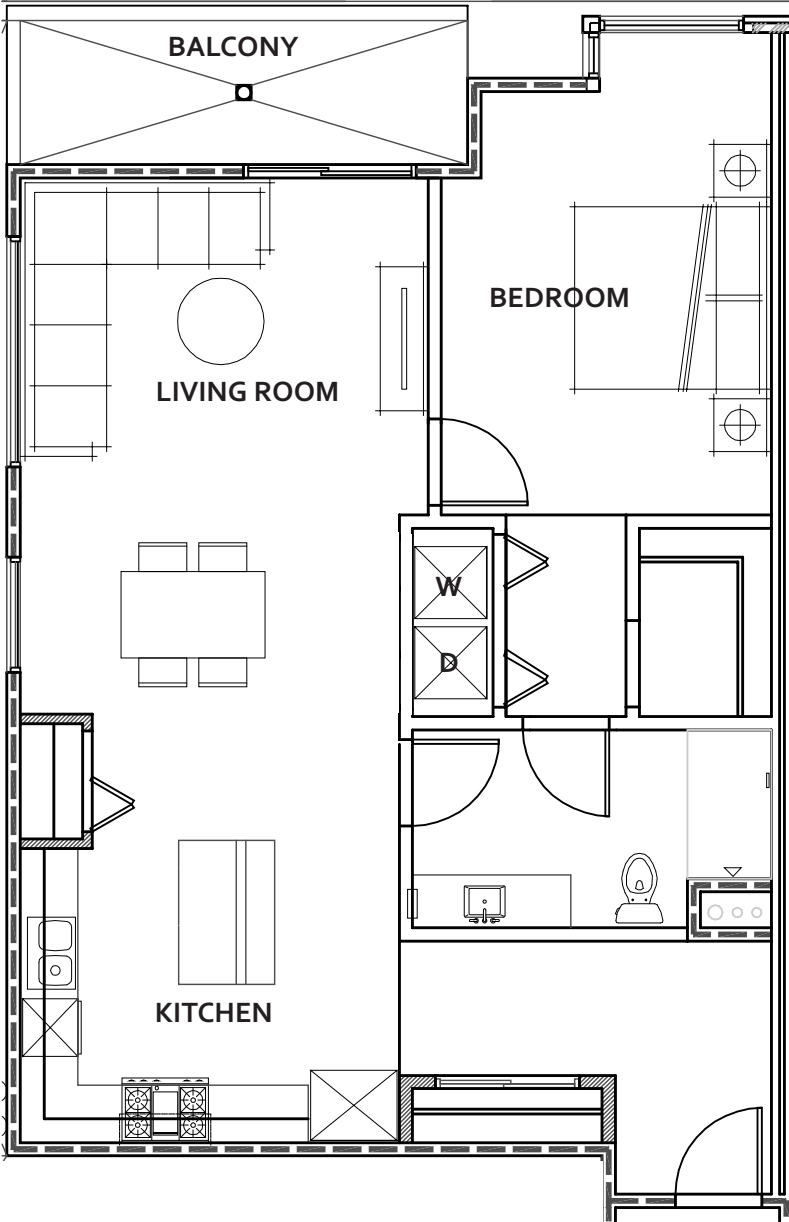


1 BEDROOM UNIT C:

985 SF

11' CEILING HEIGHT

Balconies vary by floor refer to overall plan for balcony extents.

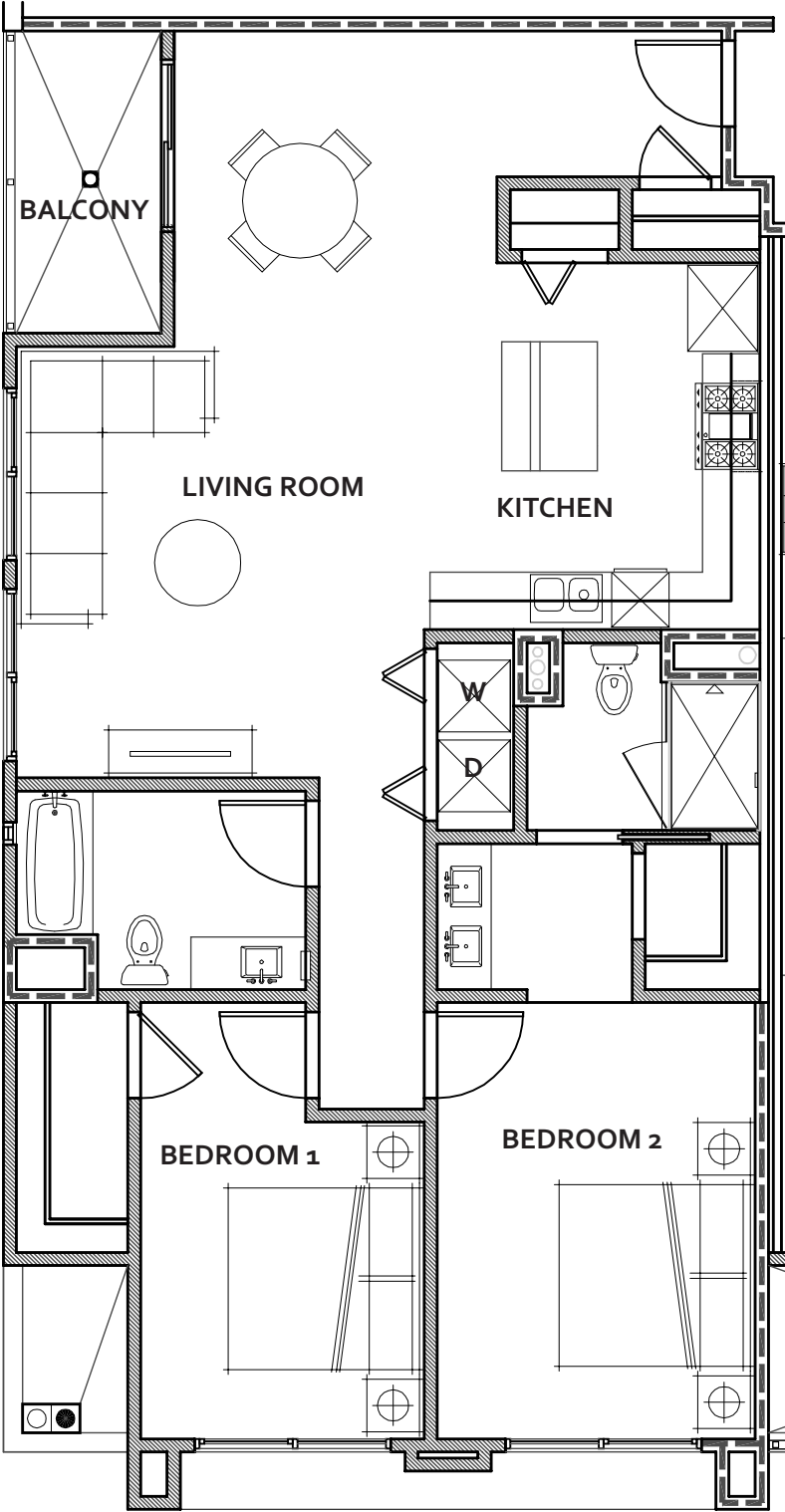


2 BEDROOM UNIT A:

1238 SF

11' CEILING HEIGHT

Balconies vary by floor refer to overall plan for balcony extents.



2 BEDROOM UNIT B:

1260 SF

11' CEILING HEIGHT

Balconies vary by floor refer to overall plan for balcony extents.

