



ChaneyBrooks

OFFICE OR RETAIL SPACE
FOR LEASE

2239 S. KING STREET

Honolulu, HI 96826

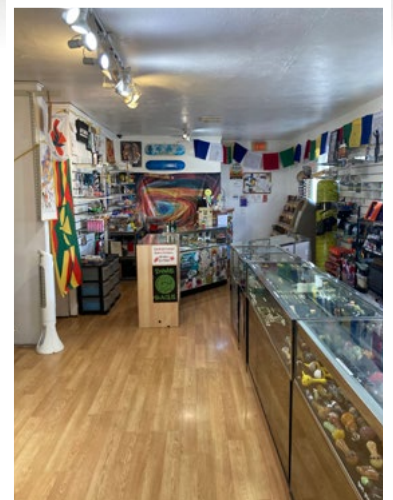


ON MAJOR THOROUGHFARE

PROPERTY DETAILS

Size : 896 SF
Base Rent : \$1.60/SF/Mo
CAM : \$1.25/SF/Mo
Term : 3 to 5 Years

- Private bathroom
- Free customer parking
- Second floor walk-up



EXCLUSIVE LISTING AGENTS:

WILLIAM C. "PETE" ALPETER (S)

+1 808-544-9575

palpeter@chaneybrooks.com

RS-54305

ANN J. LIN (S)

+1 808-497-5449

alin@chaneybrooks.com

RS-70030

1440 Kapiolani Blvd Suite 1010

Honolulu, Hawaii 96814

Main +1 808 544 1600

Fax +1 808 544 9574

Independently Owned and Operated / A Member of the Cushman & Wakefield Alliance

©2026 Cushman & Wakefield ChaneyBrooks. All rights reserved. The information contained in this communication is strictly confidential. This information has been obtained from sources believed to be reliable but has not been verified. NO WARRANTY OR REPRESENTATION, EXPRESS OR IMPLIED, IS MADE AS TO THE CONDITION OF THE PROPERTY (OR PROPERTIES) REFERENCED HEREIN OR AS TO THE ACCURACY OR COMPLETENESS OF THE INFORMATION CONTAINED HEREIN, AND SAME IS SUBMITTED SUBJECT TO ERRORS, OMISSIONS, CHANGE OF PRICE, RENTAL OR OTHER CONDITIONS, WITHDRAWAL WITHOUT NOTICE, AND TO ANY SPECIAL LISTING CONDITIONS IMPOSED BY THE PROPERTY OWNER(S). ANY PROJECTIONS, OPINIONS OR ESTIMATES ARE SUBJECT TO UNCERTAINTY AND DO NOT SIGNIFY CURRENT OR FUTURE PROPERTY PERFORMANCE.