

OFFICE 1/220  
64,200/220 = 292 TOTAL SPACES NEEDED  
XX TOTAL SPACES PROVIDED  
HC SPACES NEEDED = X  
HC SPACES PROVIDED = X

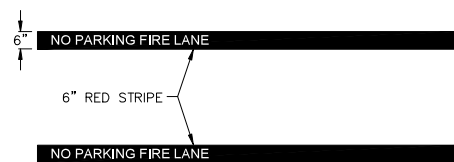
TOTAL IMPERVIOUS COVER AVAILABLE	= XX sf
TOTAL IMPERVIOUS COVER PROPOSED	= 195,870 sf

TOTAL IMPERVIOUS COVER AVAILABLE FOR FUTURE IMPROVEMENTS = XX sf

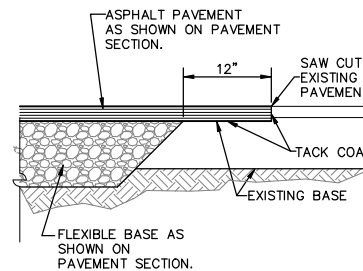
STRIPING - THE TOP FACE OF ROAD CURBS SHALL BE PAINTED UTILIZING RED TRAFFIC PAINT.

- A. IF NO CURBS ARE PRESENT, A SIX INCH (6") WIDE STRIPE PAIGNED OF TRAFFIC RED PAINT SHALL BE PAINTED ON THE DRIVING SURFACE TO SHOW THE BOUNDARIES OF THE LANE.
- B. THE WORDS "NO PARKING FIRE LANE" SHALL BE SPACED AT A MAXIMUM OF 12 FEET APART, ALONG THE LENGTH OF THE FIRE LANES.

SEE ILLUSTRATION BELOW.



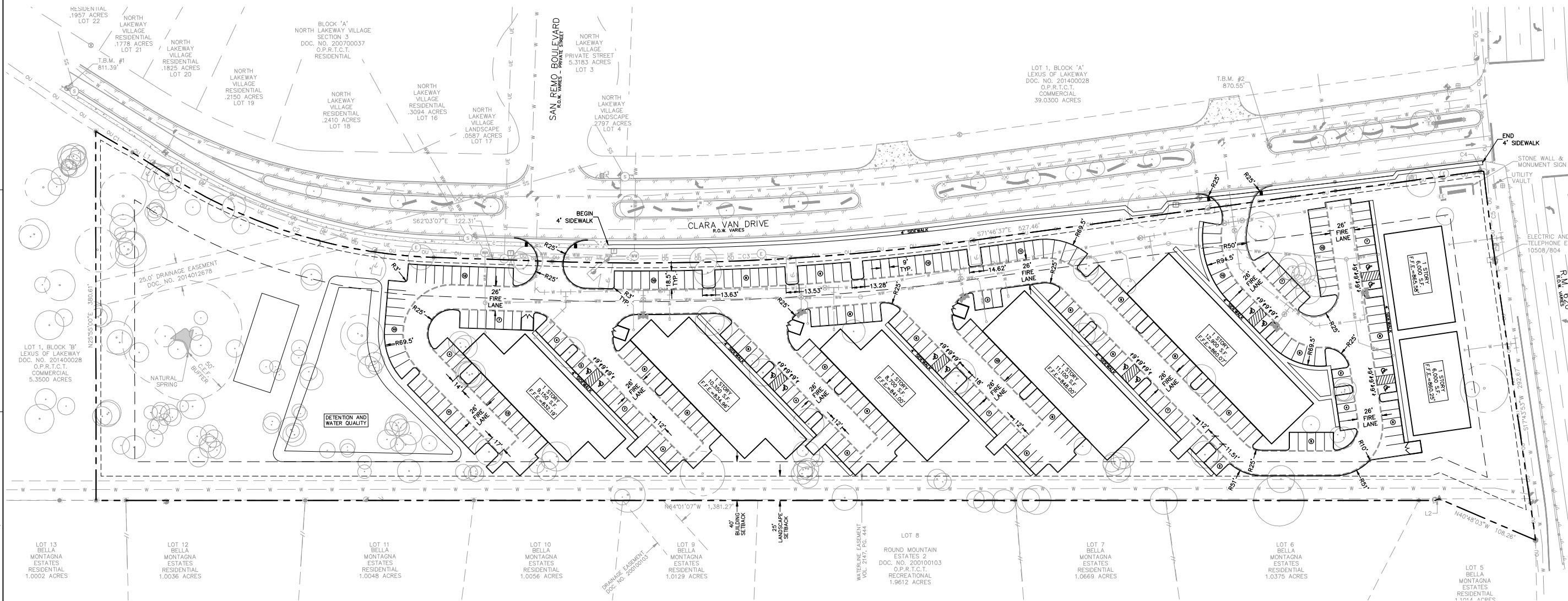
① FIRE LANE DETAIL



② NEW PAVEMENT TO EXISTING  
N.T.S.

1. ALL DIMENSIONS ARE TO THE FACE OF CURB UNLESS OTHERWISE STATED.
2. ALL SIDEWALKS SHALL HAVE A CROSS SLOPE OF NO GREATER THAN 2.0%.

A.D.A. ROUTE



THE LOCATION OF ALL EXISTING UNDERGROUND UTILITIES ARE SHOWN IN APPROXIMATE LOCATIONS ONLY. THE CONTRACTOR SHALL DETERMINE EXACT LOCATION OF ALL EXISTING UTILITIES BEFORE COMMENCING WORK. THE CONTRACTOR WILL AGREE TO BE FULLY RESPONSIBLE FOR ANY AND ALL DAMAGES WHICH MIGHT BE INCURRED BY THEIR FAILURE TO EXACTLY LOCATE AND PRESERVE ANY AND ALL UNDERGROUND UTILITIES, STRUCTURES OR FACILITIES. CONTRACTOR SHALL NOTIFY ENGINEER OF ANY DISCREPANCIES 24- HOURS PRIOR TO COMMENCING CONSTRUCTION.