



# TOWER REALTY CORP.

SPECIALISTS IN COMMERCIAL AND INDUSTRIAL REAL ESTATE

~ **FOR LEASE** ~

**OFFICE or INDUSTRIAL SPACE**



**6 Trowbridge Drive, Unit 1D, Bethel, CT**



**Size:** +/- 3,000; 3,100 or 6,100 Sq. Ft.  
**Year Built:** 1988  
**Zone:** IP (Prof. Office/Industrial)  
**Power;** 200 Amp, 3 Phase  
**Utilities:** City Water, Sewer and Gas  
**Heating:** Gas Heat  
**Cooling:** Central A/C  
**Loading:** 1 Drive-In Door  
**Sprinklers:** Yes  
**Lease Price:** \$6.00 NNN

Clean and bright space ideal for any professional office, light manufacturing or lab use. Building has lots of windows and great parking.



Scan this image with your smart phone to get our latest exclusive listings.

## FOR MORE INFORMATION CONTACT

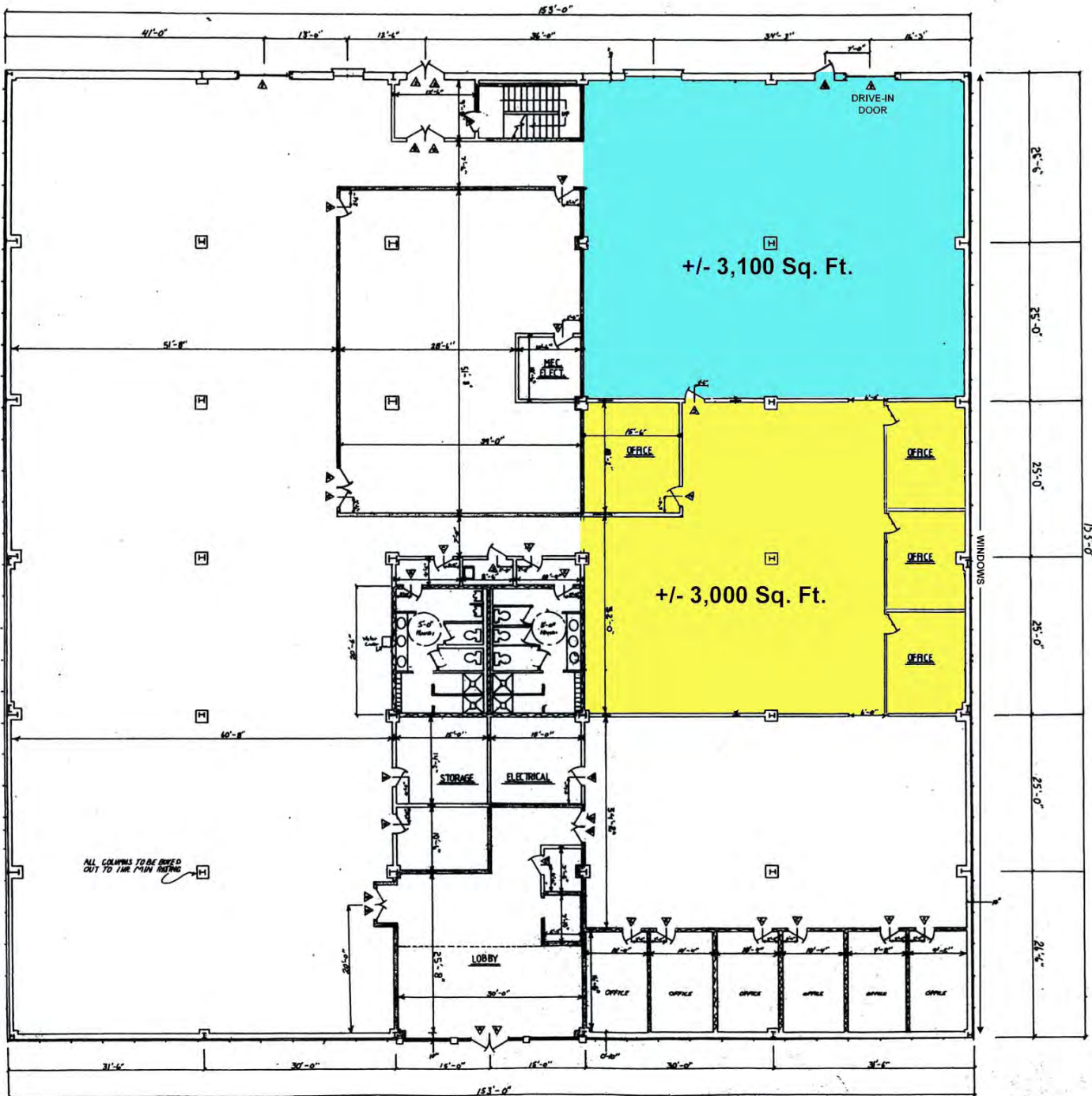
Mick Consalvo  
 mconsalvo@towercorp.com

246 Federal Rd. D26 P.O. Box 5242 Brookfield, CT 06804  
 Tel: (203) 775-5000 ▪ Fax: (203) 775-7199  
 www.towercorp.com

No warranty of representation, expressed or implied is made as to the accuracy of the information contained herein, and same is submitted subject to errors, omissions, change of price, rental, sale or other conditions, withdrawal without notice, and to any special listing conditions imposed by our principals.



Scan this image with your smart phone to join our VIP email list for market updates and property listings.



**6 Trowbridge Drive, Bethel, CT**

