

AVAILABLE FOR LEASE

16.0 ACRES OF INDUSTRIAL OUTDOOR STORAGE

1650 Hemlock Street | Tampa, FL 33605



DRONE VIDEO
CLICK TO EXPLORE



LICENSED REAL ESTATE BROKER | FranklinSt.com

BRAD HUTTON | Director
813.793.8492 | Brad.Hutton@FranklinSt.com

PATRICK KELLY | Regional Managing Director
813.682.6210 | Pat.Kelly@FranklinSt.com

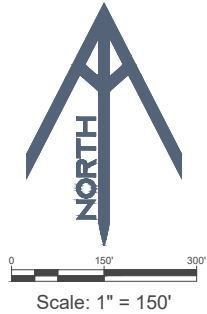
PROPERTY SUMMARY



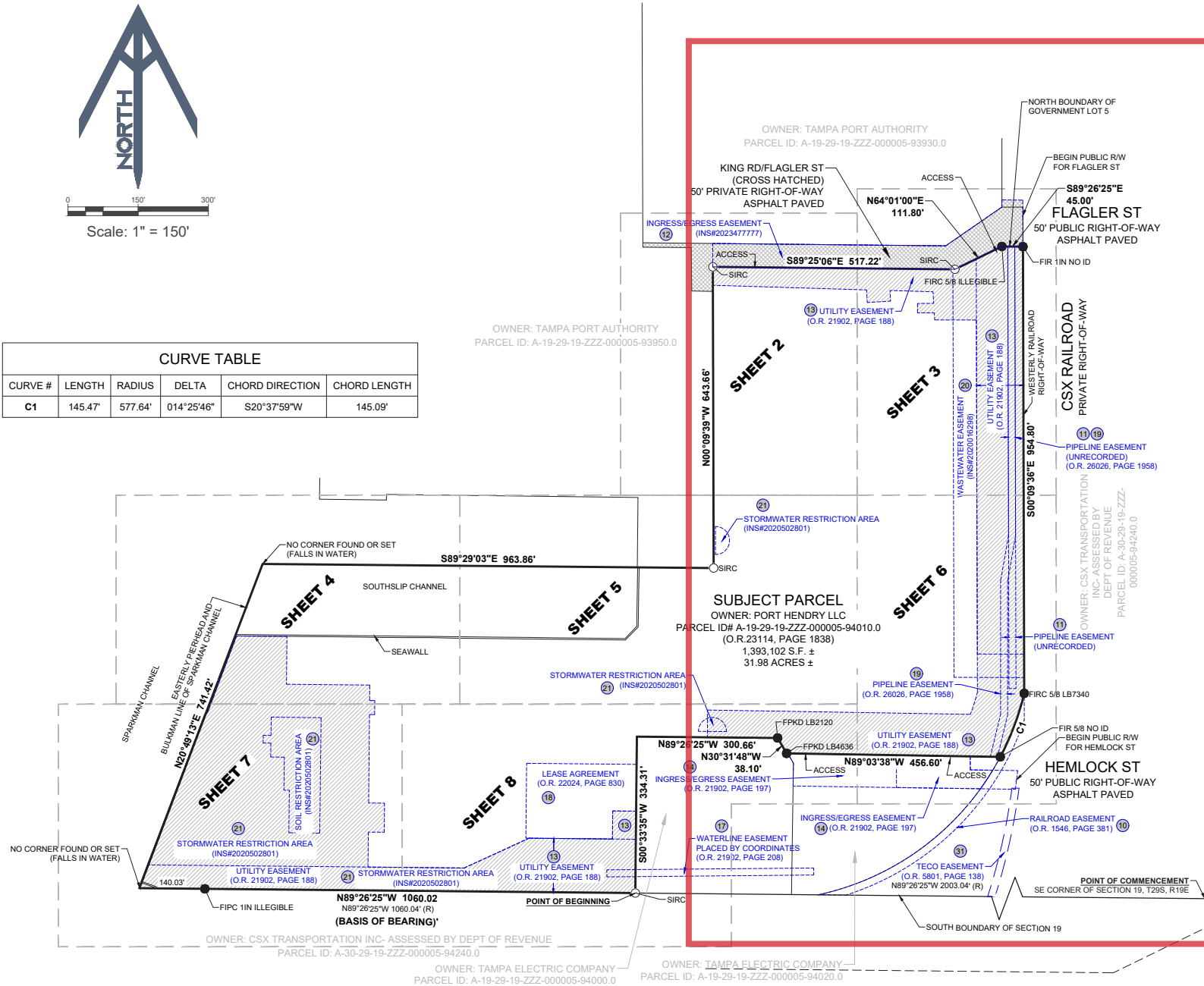
PROPERTY HIGHLIGHTS

- Total Acreage: 16.0 Acres
- Zoning: IH (Industrial Heavy) - Highest intensities, outside storage allowed
- Built to Suit: 5,000 - 200,000 SF Warehouse
- Rail Spur Subject to CSX Approval
- Water access available
- Two means of ingress
- Security: Fenced lot with gravel surface and outdoor lighting
- Ideal Uses:
 - Bulk & General Cargo
 - Container/Yacht/Boat Storage
 - Refrigerated
 - RORO/Auto
 - Building Supply
 - Materials Storage
 - Equipment Storage
 - Trailer/Container Parking
 - Petroleum
 - Maritime
 - Warehousing





CURVE TABLE					
CURVE #	LENGTH	RADIUS	DELTA	CHORD DIRECTION	CHORD LENGTH
C1	145.47'	577.64'	014°25'46"	S20°37'59"W	145.09'



DRIVE TIME MAP



1.8 miles / 7 minutes
From I-4



2.6 miles / 9 minutes
To Port of Tampa Container Terminal

0.7 miles / 3 minutes
If using port gates (2002 Maritime Blvd)



3.1 miles / 9 minutes
To Downtown Tampa



3.7 miles / 11 minutes
From I-275



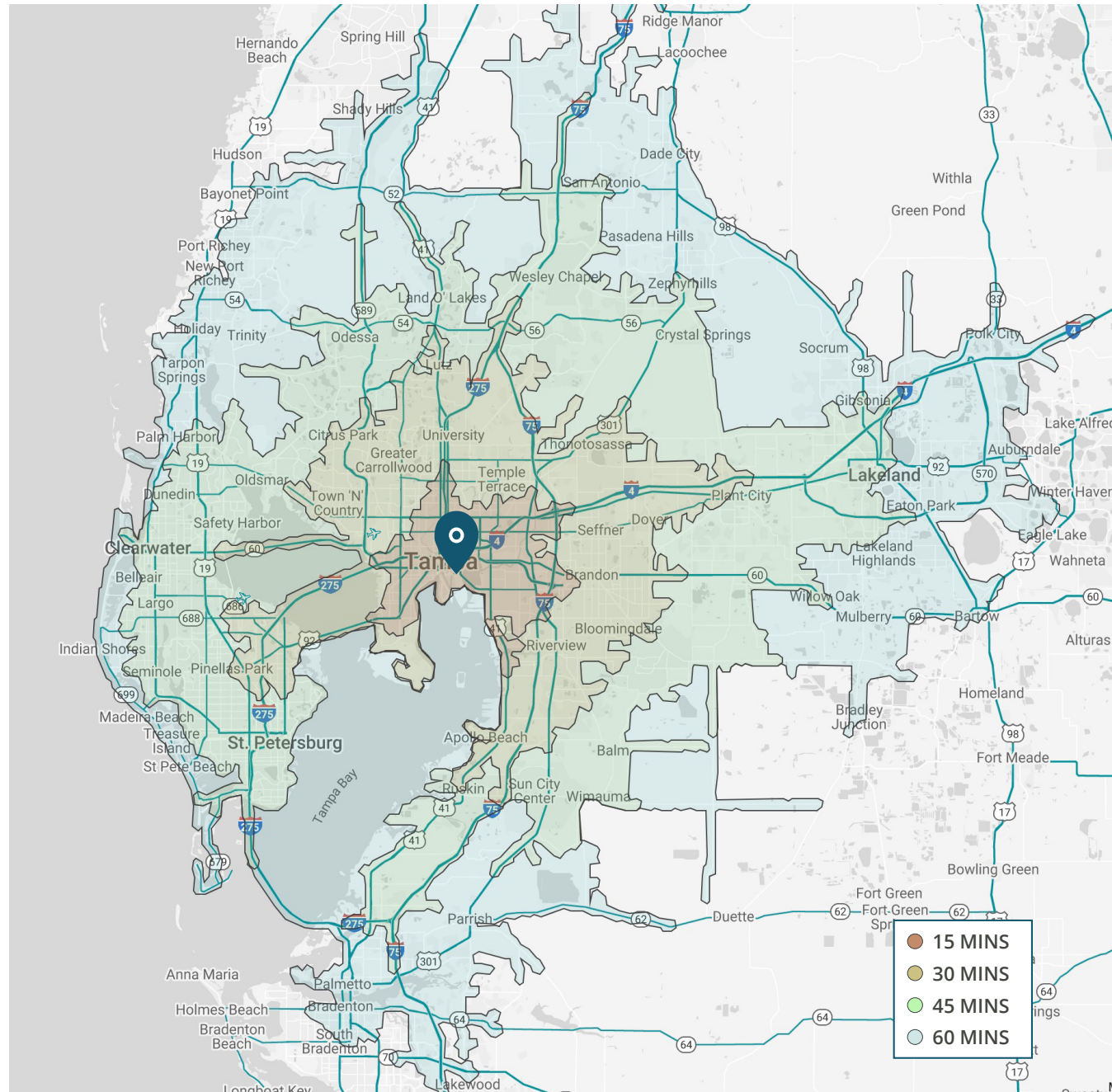
8.8 miles / 16 minutes
From I-75



9.5 miles / 24 minutes
To Tampa International Airport



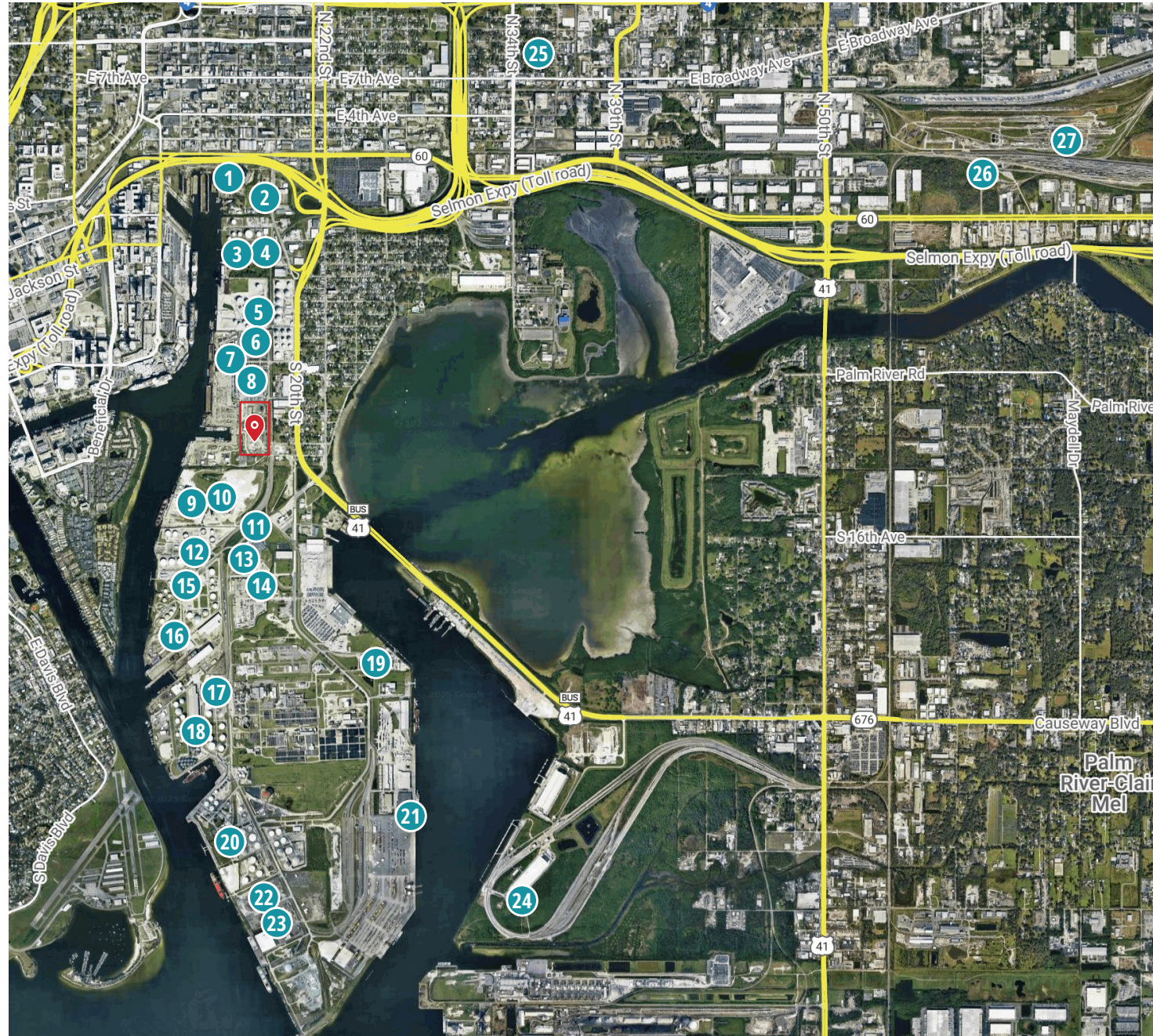
12 miles / 20 minutes
To Clearwater/St. Pete
International Airport



AERIAL MAP

Near By Tenants

1. International Ship Repair & Marine Services
2. White Cap
3. Associated Asphalt
4. Targray
5. Marathon
6. Carrier
7. Gulf Marine Repair
8. USPS
9. Vulcan Materials
10. Argos Cement
11. Majestic Steel
12. Citgo
13. Cargill Salt
14. Maersk
15. Buckeye
16. Tampa Ship
17. Trans Montaigne
18. Amalie Oil
19. The Mosaic Company
20. Kinder Morgan
21. Ports America
22. Martin Marietta
23. Lane Construction
24. CSX Rockport Train Yard
25. Murphy USA
26. CSX Yeoman Train Yard
27. CSX Uceta Train Yard



CONTACT

BRAD HUTTON

Director

813.793.8492

Brad.Hutton@FranklinSt.com

PATRICK KELLY

Regional Managing Director

813.682.6210

Pat.Kelly@FranklinSt.com



1311 N Westshore Blvd | Suite 200

Tampa, FL 33607

813.839.7300

[Visit us at FranklinSt.com](http://FranklinSt.com)

No warranty or representation, expressed or implied, is made to the accuracy of information contained herein, and same is submitted subject to errors, change of price, rental or other conditions, withdrawal without notice, and to any special listing conditions imposed by our principals. PLANS NOT TO SCALE.