

SUMMERLIN LAKES

FOR LEASE • CLASS "A", PRIME OFFICE/MEDICAL OPPORTUNITY
7950 SUMMERLIN LAKES DRIVE • FORT MYERS, FL 33907



KIM DAUGHERTY

Senior Advisor

239.334.3040

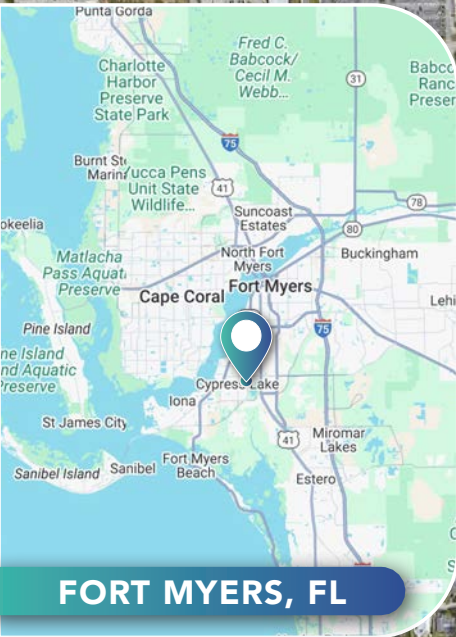
Kim.Daugherty@TrinityCRE.com





SUMMERLIN LAKES

FOR LEASE · CLASS "A", PRIME OFFICE/MEDICAL OPPORTUNITY
7950 SUMMERLIN LAKES DRIVE · FORT MYERS, FL 33907



2025 DEMOGRAPHICS

7950 Summerlin Lakes



AVERAGE H.H INCOME

1 MILE	3 MILE	5 MILE
\$78,403	\$100,216	\$113,108



POPULATION

8,451	65,403	147,422
-------	--------	---------



EMPLOYMENT DENSITY

8,715	47,396	95,035
-------	--------	--------

PROPERTY FEATURES

PRICE \$13.00 PSF NNN \$9.54 PSF

AVAILABLE 2,500± SF - 11,000± SF

ZONING C-1A

LOCATION The subject site is located on Summerlin Lakes Drive, near key medical hubs and major Fort Myers routes.



TrinityCRE.com

9450 Corkscrew Palms Cir • Suite 101 • Estero, FL 33928

© 2025 Trinity Commercial Group

This information is considered accurate, but not guaranteed.



SUMMERLIN LAKES

FOR LEASE • CLASS "A", PRIME OFFICE/MEDICAL OPPORTUNITY
7950 SUMMERLIN LAKES DR • FORT MYERS, FL 33907



TrinityCRE.com

9450 Corkscrew Palms Cir • Suite 101 • Estero, FL 33928

© 2025 Trinity Commercial Group

This information is considered accurate, but not guaranteed.

MEMBER OF:
SITE SOURCE
RETAIL BROKER NETWORK

SUMMERLIN LAKES

FOR LEASE • CLASS "A", PRIME OFFICE/MEDICAL OPPORTUNITY
7950 SUMMERLIN LAKES DR • FORT MYERS, FL 33907



SUMMERLIN LAKES

FOR LEASE • CLASS "A", PRIME OFFICE/MEDICAL OPPORTUNITY
7950 SUMMERLIN LAKES DR • FORT MYERS, FL 33907



COVERED
PARKING
INCLUDED



MONUMENT SIGNAGE
AVAILABLE



TrinityCRE.com

9450 Corkscrew Palms Cir • Suite 101 • Estero, FL 33928

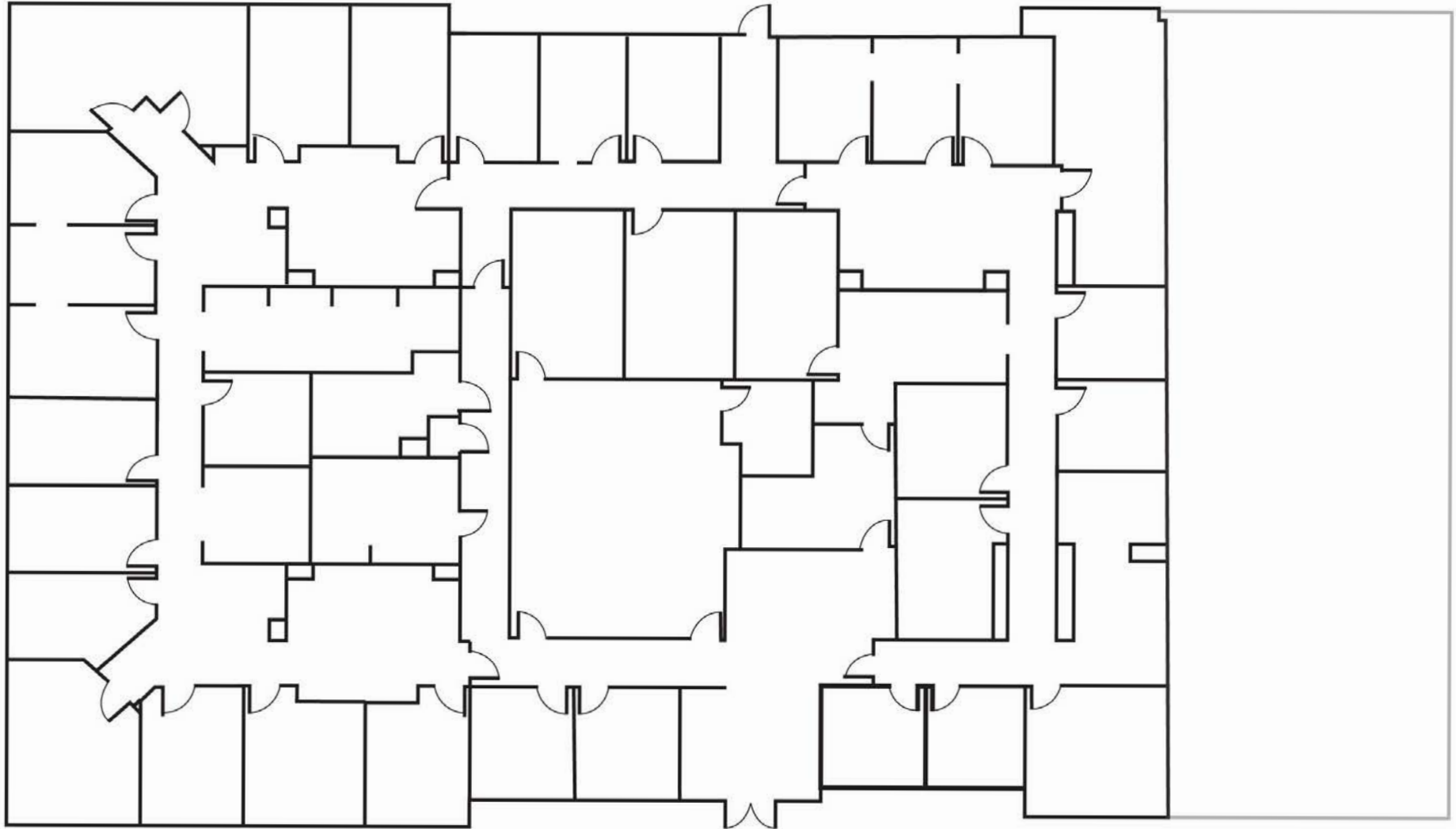
© 2025 Trinity Commercial Group

This information is considered accurate, but not guaranteed.

MEMBER OF:
SITE SOURCE
RETAIL BROKER NETWORK

SUMMERLIN LAKES

FOR LEASE • CLASS "A", PRIME OFFICE/MEDICAL OPPORTUNITY
7950 SUMMERLIN LAKES DR • FORT MYERS, FL 33907



11,000± SF Total (Can be divided into 2,500-3,000 SF Units)



TrinityCRE.com

9450 Corkscrew Palms Cir • Suite 101 • Estero, FL 33928

© 2025 Trinity Commercial Group

This information is considered accurate, but not guaranteed.

MEMBER OF:
SITE SOURCE
RETAIL BROKER NETWORK