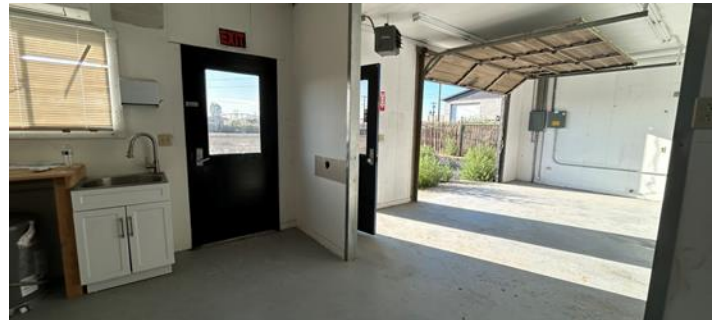




900 SQUARE FEET

1322 S 8th Ave, Pasco, WA 99301



PROPERTY DESCRIPTION

- Office Space
- Roll up door
- Move-in ready
- On-site parking
- Restrooms
- Adjacent Land Available

PASCO QUICK FACTS

Population of 316,600,
fastest growing region
in WA



Minutes away from air,
rail, highway, and water
transportation



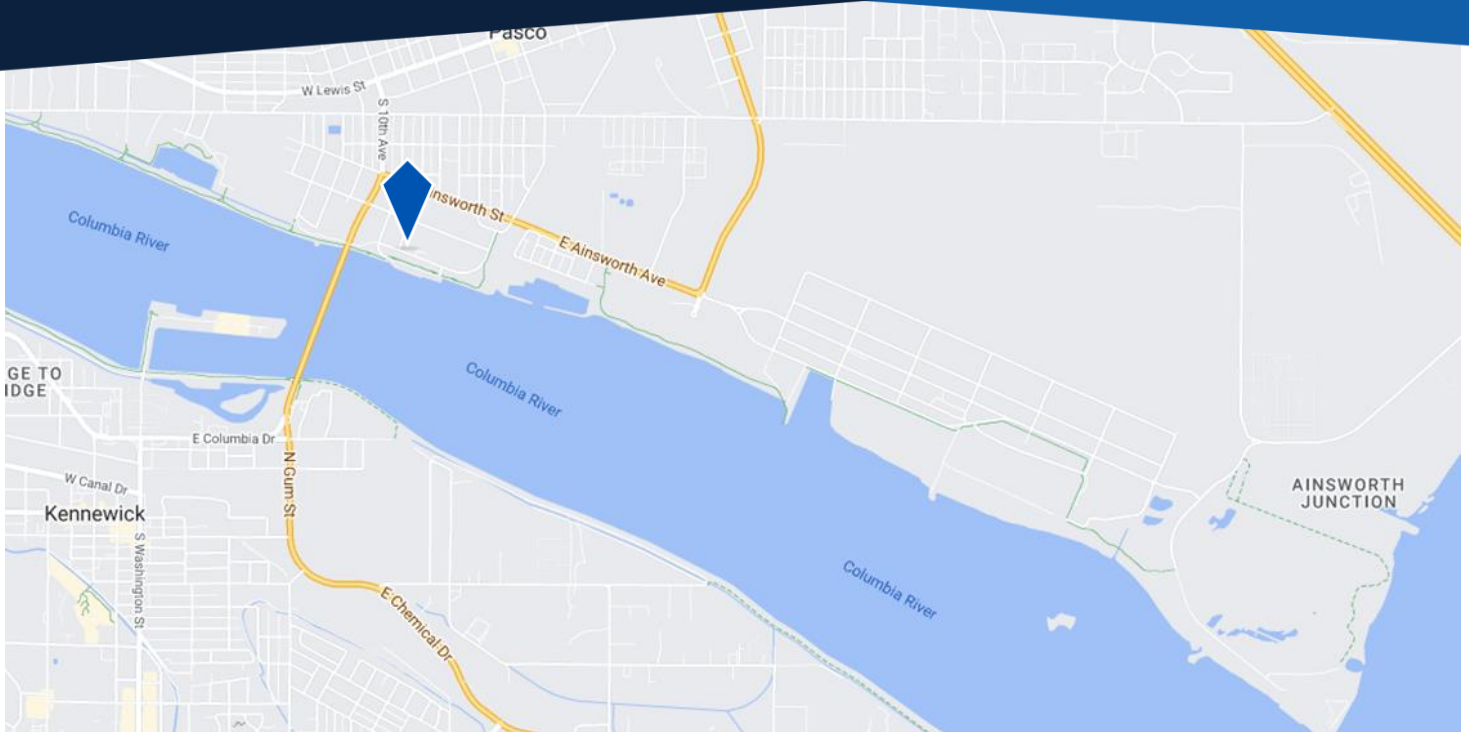
Labor force of 151,800



The Wharf M306



1322 S 8th AVE, Pasco, WA 99301



RENT \$850.00/mo.

LEASE Lease Type: NNN



HIGHLIGHTS

- AC Unit
- Kitchen
- Storage room



LEASING CONTACT INFO:

Shannon Kruiwyk
(509) 547-3378
skruiwyk@portofpasco.org

Mayra Reyna
(509) 547-3378
mreyna@portofpasco.org

This flyer is for informational purposes only and does not constitute a contract or offer of lease. The terms of any proposed lease are contingent upon the execution of a lease agreement acceptable to each party and approved by the Port of Pasco Commission. Prospective tenants are responsible for verifying the information on this flyer as part of their own due diligence. All information provided is susceptible to errors or omissions, withdrawal from market, or alterations in terms, all of which may occur without prior notification. Similarly, availability, prices, features, and plans are subject to modification without advance notice. Broker Policy is available upon request.