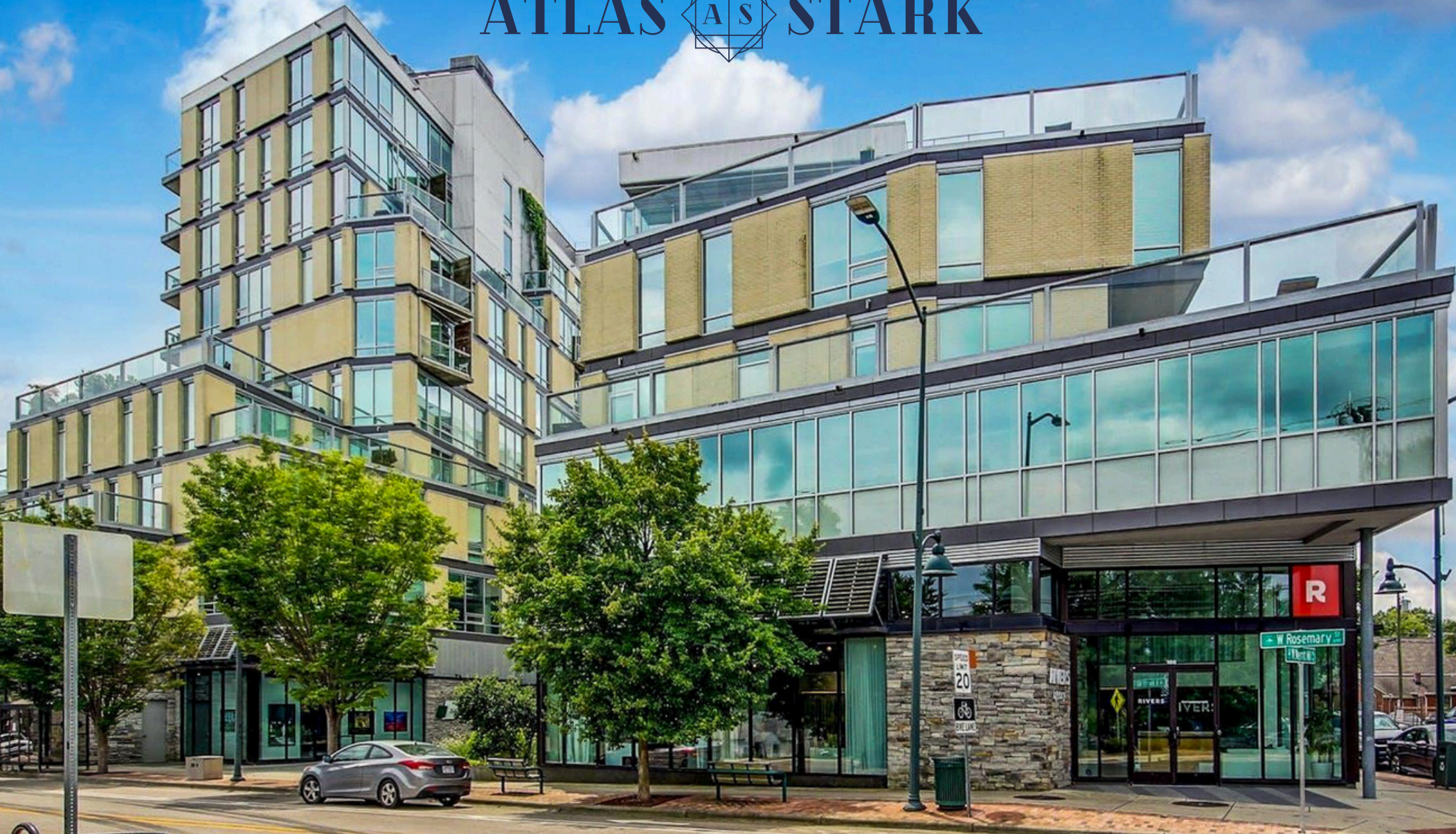


ATLAS  STARK



601 W ROSEMARY ST.

FOR SALE OR LEASE • SUITE 104



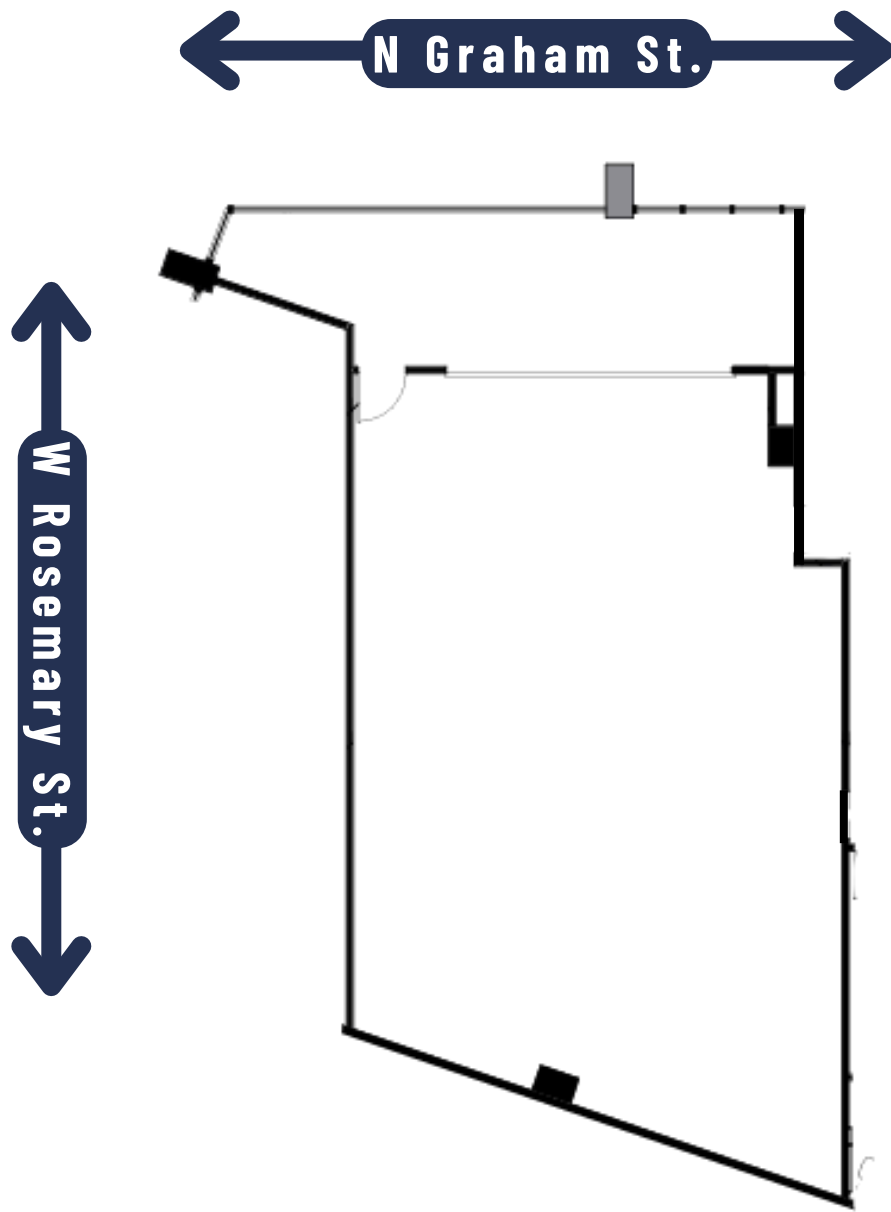
# Highlights

<b>Property Address</b>	<b>601 W Rosemary St</b>
<b>Suite #</b>	<b>104B</b>
<b>Year Built</b>	<b>2008</b>
<b>Size</b>	<b>1,810 SF</b>
<b>Zoning</b>	<b>TC-3-CZD</b>
<b>Asking Price</b>	<b>\$452,500</b>
<b>Rental Rate</b>	<b>\$22.00 PSF NNN</b>
<b>TICAM</b>	<b>\$15.75 PSF</b>

Atlas Stark Holdings is pleased to present a 1,810 SF office/retail condominium unit For Sale or Lease at The Greenbridge, a 10-story mixed-use building with ground floor and 2nd floor commercial space, and 100 residential condominiums on the upper floors.

The Greenbridge is conveniently located on Rosemary Street in downtown Chapel Hill, walking distance to UNC campus and Carrboro.



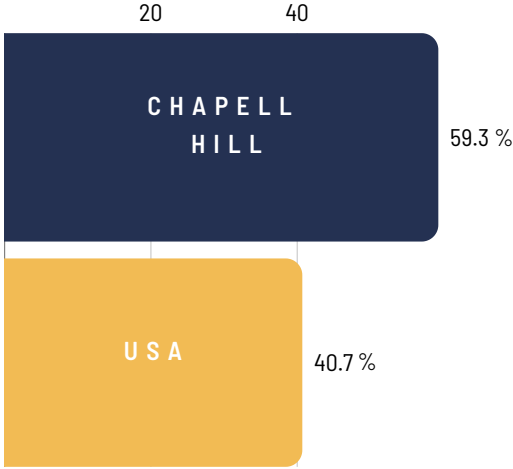


# SUITE 104

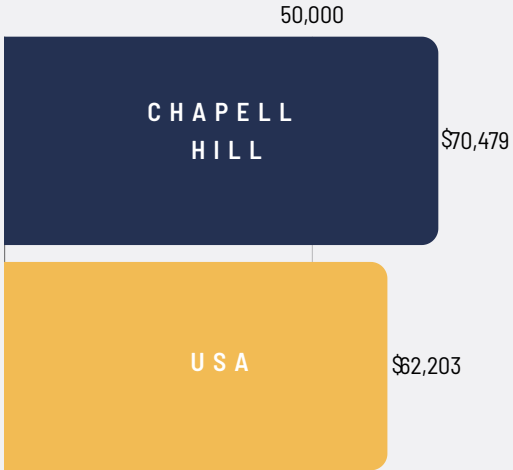
## FLOORPLAN

# STRONG DEMOGRAPHICS

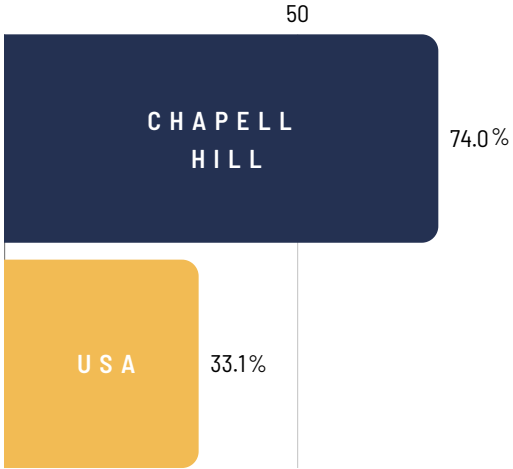
Annual Population  
Growth (2020–2025)



2020 Median  
Household Income:



Bachelor's Degree  
or Higher



# PRIME LOCATION

Located between Chapel Hill and Carrboro  
86 WALK SCORE "Very Walkable"

Weaver St Market  
Harris Teeter

Hampton Inn

Cat's Cradle

**SITE**

W Rosemary St.

Franklin St.

Cameron Ave

AC Hotel by Marriott

Pantana Bob's

Target  
Panera Bread  
Crumbl Cookies





# ATLAS STARK

Atlas Stark Holdings, LLC.

All information contained herein is from sources deemed reliable; however, no representation or warranty is made to the accuracy thereof.

## CONTACT INFO

Tyler Christensen, Broker

(C)828.999.9459

[tchristensen@atlasstark.com](mailto:tchristensen@atlasstark.com)

[www.atlasstark.com](http://www.atlasstark.com)