

# GWINNETT FOREST BUSINESS CENTER

NORTHEAST ATLANTA  
DULUTH/SUWANEE/BUFORD

2150 Boggs Road | Bldg 400 | Suite 410  
Duluth, GA 30096



FOR LEASE

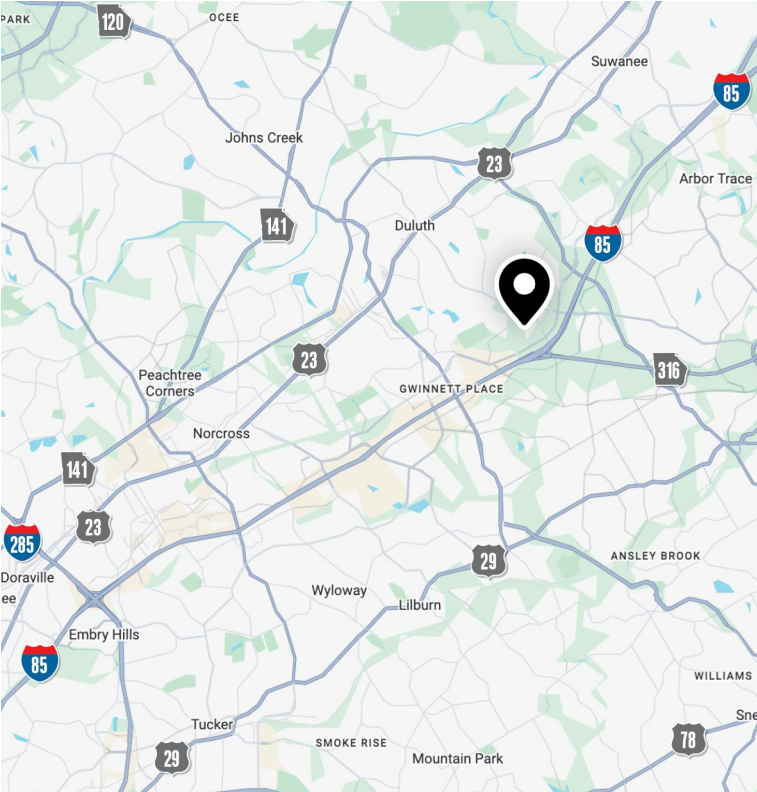
SUITE 410

14,329 SF



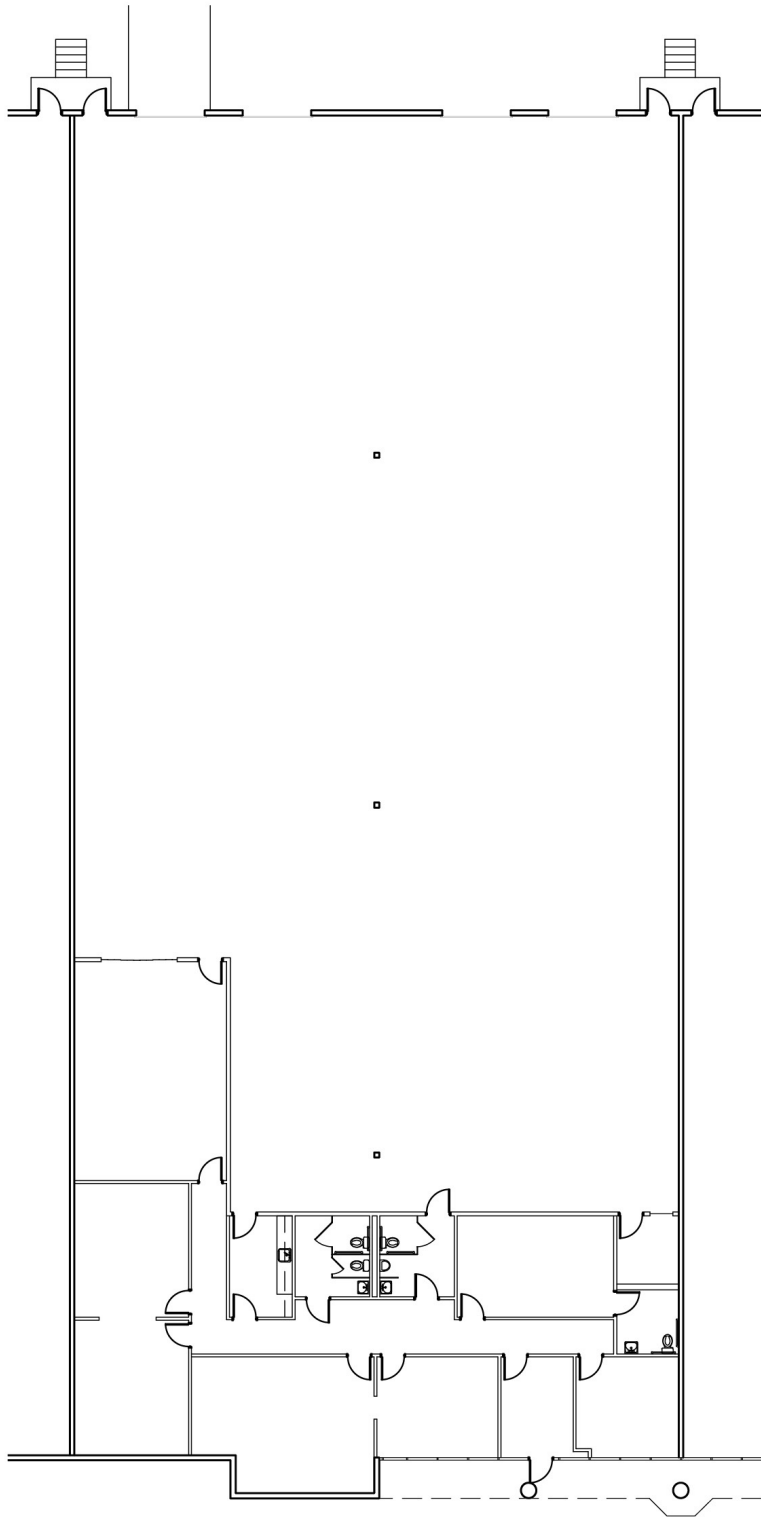
LEASED BY **NAI** BrannenGoddard





## SPECIFICATIONS

Building Size	118,063 SF
Available	14,329 SF
Office	3,272 SF
Clear Height	24'
Dock-High Doors	3
Drive-In Door	1
Column Spacing	40' x 45'
Parking	2.0/1,000 SF
Sprinkler	Wet
Truck Court	120'
Zoning	Light Industrial



## SUITE 410

Office	3,272 SF
Warehouse	±10,829 SF
<b>Total Available</b>	<b>14,329 SF</b>

## KEY









# CONTACT INFORMATION



2150 Boggs Road | Bldg 400 | Suite 410  
Duluth, GA 30096

**Walker Adams**

wadams@naibg.com  
(404) 812-4066

**Griffin Price**

gprice@naibg.com  
(404) 812-4094

**Charlie Adams**

cadams@naibg.com  
(404) 812-4037

**Garrison Price**

gsprice@naibg.com  
(404) 812-4039

This is not an offer or acceptance of an offer to lease space. A lease will only be offered or made in a written agreement signed by landlord. No representation or warranty of any kind is made by landlord unless set forth in a written definitive lease executed by the landlord.

