



W 1/4

104

220.89'

102

0.78 AC.

153.91'

153.87'

220.89'

248.16' M/L

101

0.77 AC.

58.70'

103

0.41 AC.

39.70'

175.75'

60'

100

0.15 AC.

110'

400

150'

LARSON ROAD

315.00'

600

1.43 AC.

25'

50'

173.81'

80'

110'

500

85'

EAST 194.85'

SEE HWY DRG. 10B-4-20

57.54'

RTITION
PLAT

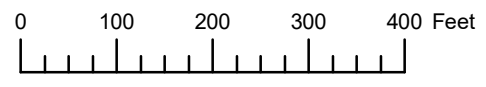


132.12' M/L

111.66'

126.00'

THIS MAP WAS PREPARED FOR ASSESSMENT PURPOSE ONLY

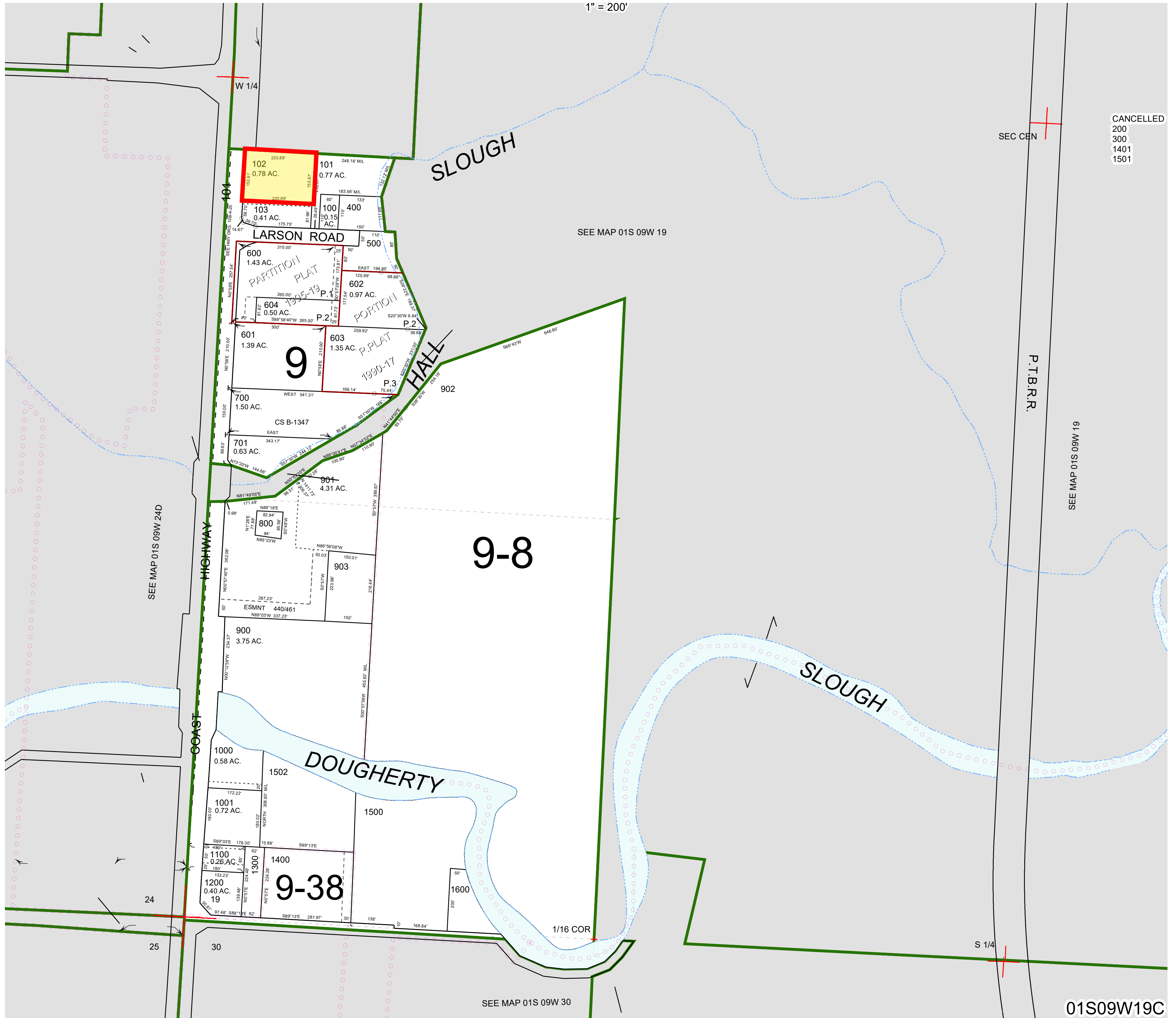


S.W.1/4 SEC.19 T.1S. R.9W. W.M.

TILLAMOOK COUNTY

01S09W19C

1" = 200'



CANCELLED
200
300
1401
1501

SEE MAP 01S 09W 24D

SEE MAP 01S 09W 19

SEE MAP 01S 09W 19

SEE MAP 01S 09W 30

01S09W19C

Revised 08/07/20, WS