

STATE STREET

NEIGHBORHOOD RETAIL CENTER

Former Rite Aid



625 N. State St.
Caro, MI 48723



Retail Opportunity
up to 6,428 ± SF

FOR LEASE

PROPERTY HIGHLIGHTS



Description

Become part of a growing retail lineup alongside AT&T and Wild Bill's Tobacco in this thriving Caro shopping center. Located along the main thoroughfare, the property features outstanding visibility, easy access, ample parking, and pylon signage opportunities. Space is available for lease in this well-positioned and high-traffic location.

Address

625 N. State St.
Caro, MI 48723

Asking Rent

Contact Broker

Features

- 6,428 ± SF Available
- Pylon Signage Available
- Multiple Curb Cuts
- Ample Parking
- B2 Zoning - General Business District

Traffic Counts

N State St- 8,050+ cpd
Ellington St - 5,410+ cpd

Demographics

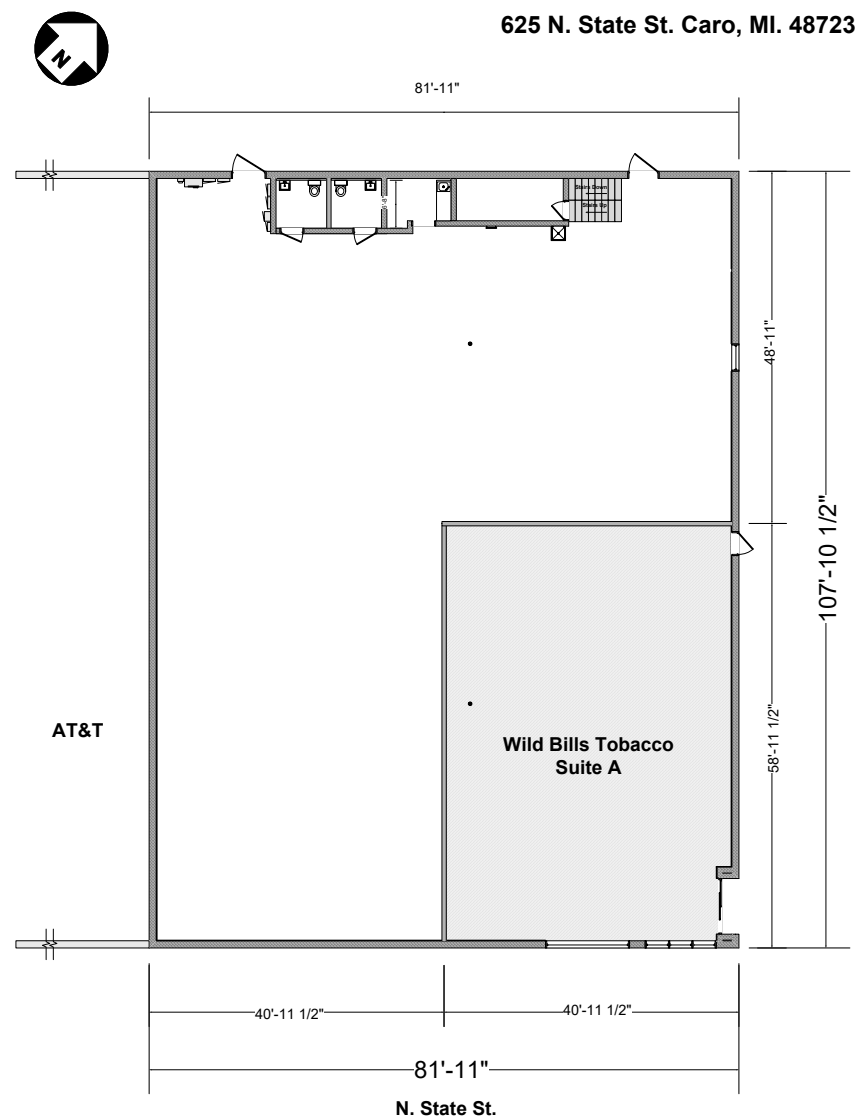
	3 MILE	5 MILES	7 MILES
POPULATION:	7,589	9,371	12,300
HOUSEHOLDS:	3,244	3,978	5,164
AVG. HOUSEHOLD INCOME:	\$69,883	\$71,820	\$74,532
DAYTIME POPULATION:	7,547	8,840	10,160

Trade Area Tenants



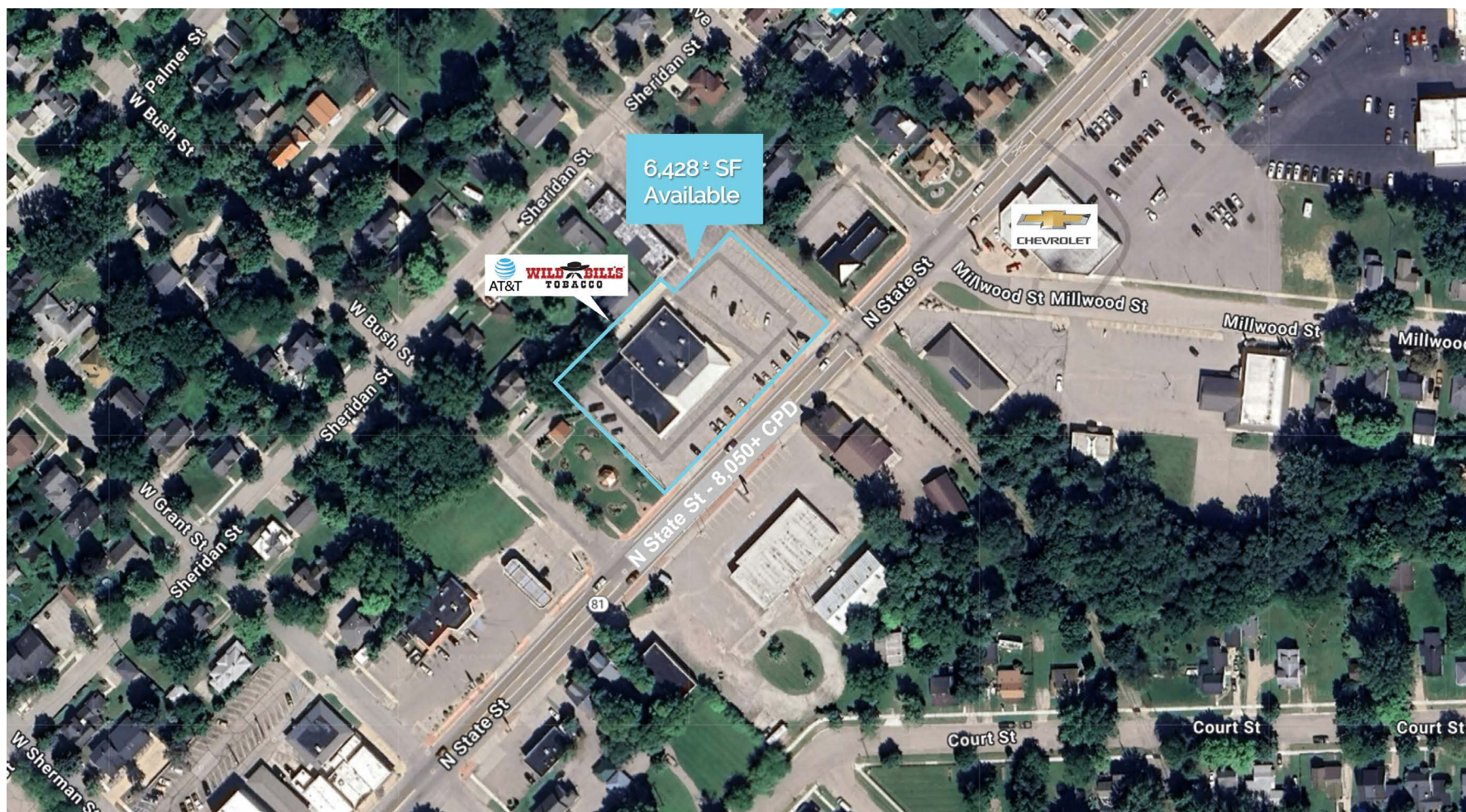
The information contained herein has been obtained through sources deemed reliable by On Q Commercial Real Estate but cannot be guaranteed for its accuracy. We recommend to the buyer or lessee that any information, which is of special interest, should be obtained through independent verification. ALL MEASUREMENTS ARE APPROXIMATE.

FLOOR PLAN



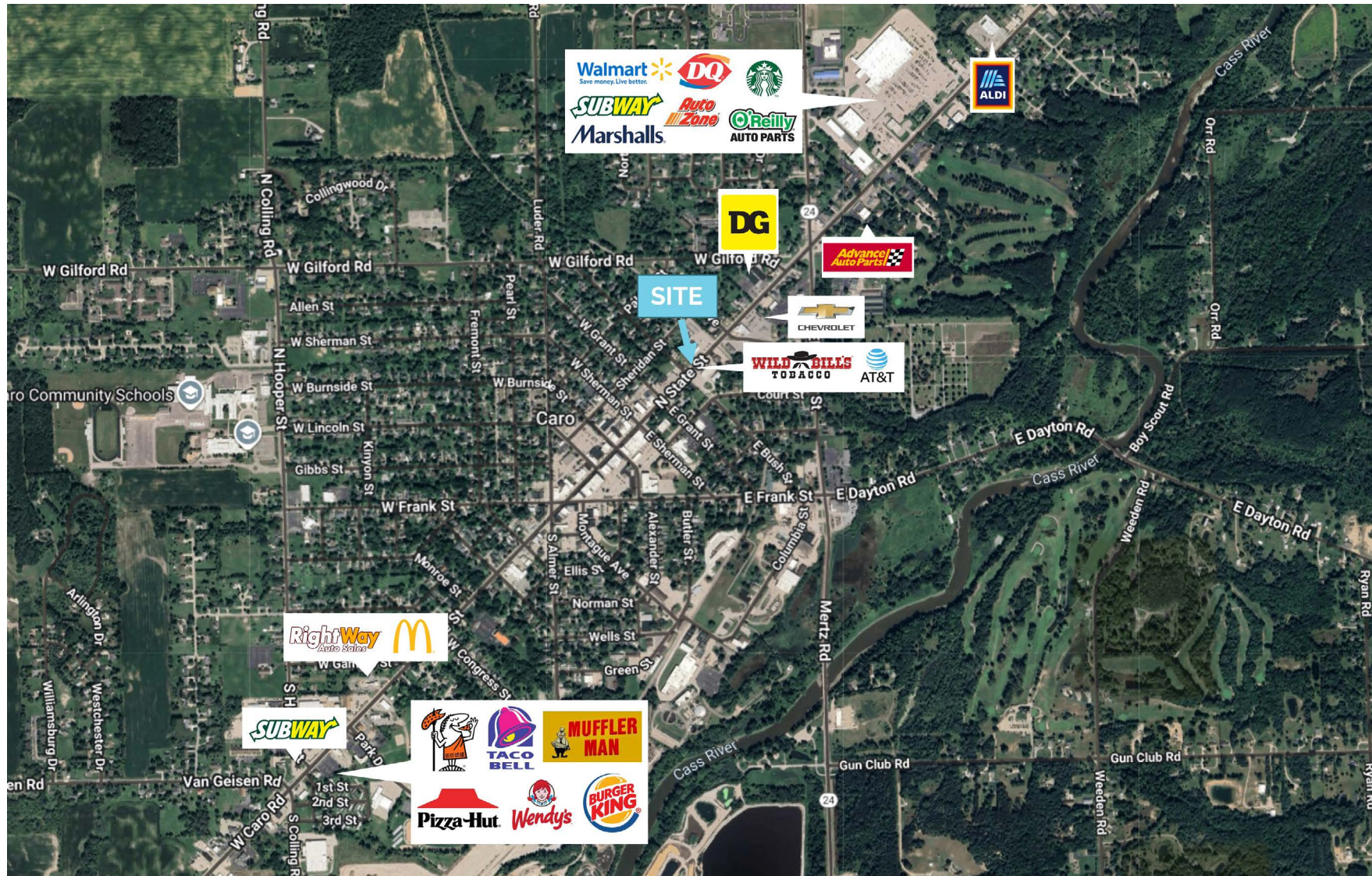
The information contained herein has been obtained through sources deemed reliable by On Q Commercial Real Estate but cannot be guaranteed for its accuracy. We recommend to the buyer or lessee that any information, which is of special interest, should be obtained through independent verification. ALL MEASUREMENTS ARE APPROXIMATE.

MICRO AERIAL



The information contained herein has been obtained through sources deemed reliable by On Q Commercial Real Estate but cannot be guaranteed for its accuracy. We recommend to the buyer or lessee that any information, which is of special interest, should be obtained through independent verification. ALL MEASUREMENTS ARE APPROXIMATE.

MACRO AERIAL



The information contained herein has been obtained through sources deemed reliable by On Q Commercial Real Estate but cannot be guaranteed for its accuracy. We recommend to the buyer or lessee that any information, which is of special interest, should be obtained through independent verification. ALL MEASUREMENTS ARE APPROXIMATE.

PHOTOS

STATE STREET NEIGHBORHOOD RETAIL CENTER



The information contained herein has been obtained through sources deemed reliable by On Q Commercial Real Estate but cannot be guaranteed for its accuracy. We recommend to the buyer or lessee that any information, which is of special interest, should be obtained through independent verification. ALL MEASUREMENTS ARE APPROXIMATE.



OnQ
COMMERCIAL
REAL ESTATE

JOE QONJA

Principal Broker

C: (248) 977-7799

O: (248) 712-3300

E: joe@onqcre.com

LEO ALLUS

Associate

C: (248) 321-3325

O: (248) 712-3300

E: leo@onqcre.com

100 W. Long Lake Rd. Suite 122 Bloomfield Hills, MI 48304

www.onqcre.com

The information contained herein has been obtained through sources deemed reliable by On Q Commercial Real Estate but cannot be guaranteed for its accuracy. We recommend to the buyer or lessee that any information, which is of special interest, should be obtained through independent verification. ALL MEASUREMENTS ARE APPROXIMATE.