

For Lease: **2166 Kalakaua Ave., Honolulu, Hawaii 96815**

Prime Kalakaua Retail Space – WAIKIKI – Rare Availability



Space 2166: Ground floor Kalakaua frontage retail space of approximately 1,040 square feet plus rare sidewalk Kiosk. The subject property is located next to Prada Waikiki.

- Asking Rent: Call for details
- CAM: \$ 2.26 psf/Mo. 2025
- Percentage Rent: Requirement
- Term: Negotiable
- TMK: 1-2-6-15-48

Property Description:

Nice free-standing two-story retail building in the heart of Waikiki. Join neighbors, Prada, Diesel & Tommy Bahama at this Kalakaua street frontage property.



Features:

1. Excellent retail exposure on Kalakaua Avenue across from Bank of Hawaii & First Hawaiian Bank
2. Parking available in rear of building
3. Please contact Listing Agent for more information, do not disturb tenant.

For more information concerning this exclusive listing contact:

Ray E. Hulick (B)
521-8812 (phone) 538-1956 (fax)
ray@crshawaii.com

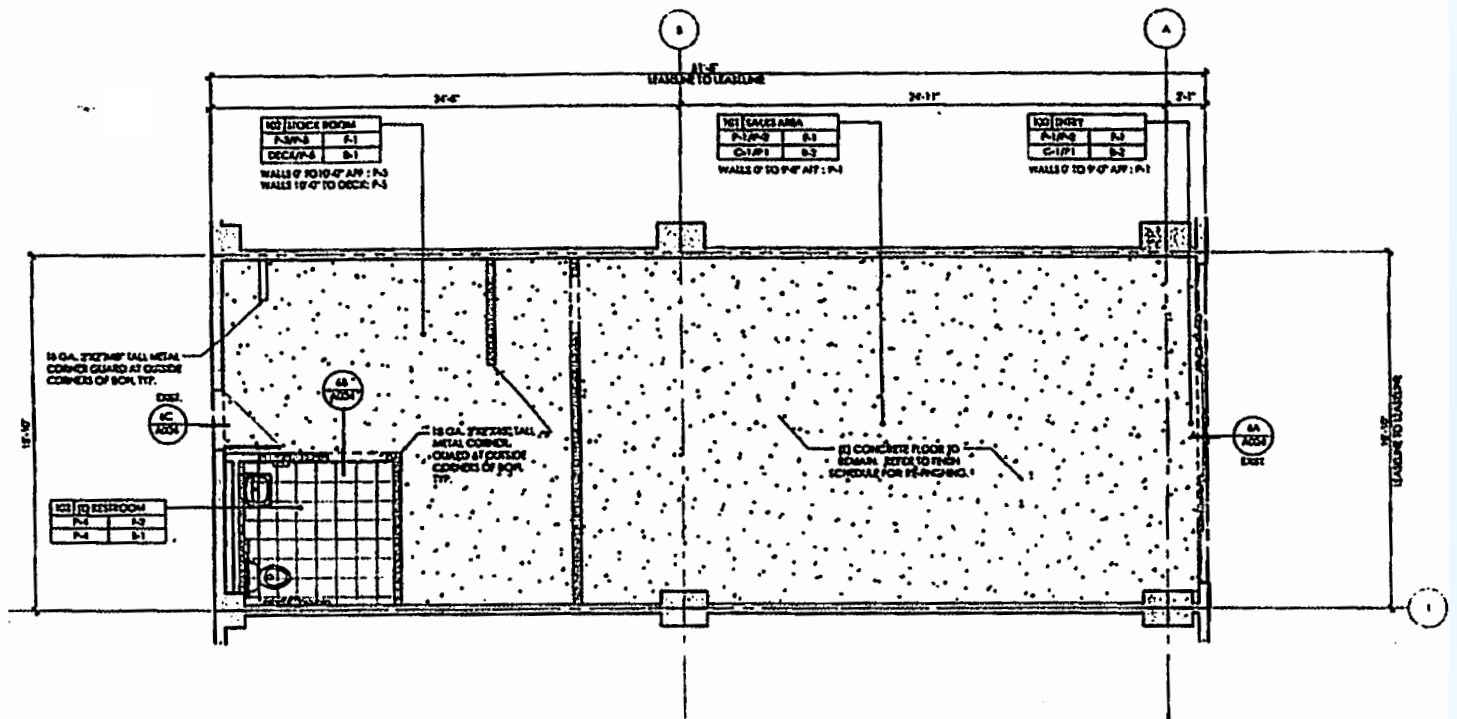
CRS

Commercial Real Estate Services, Inc.
Sales, Leasing, Consulting

1831 Young Street
Honolulu, Hawaii 96826
Tel. (808) 521-8812

The information listed above has been obtained from sources we believe to be reliable, however, we accept no responsibility for its correctness.

For Lease: 2166 Kalakaua Ave., Honolulu, Hawaii 96815
Prime Kalakaua Retail Space – WAIKIKI – Rare Availability



For more information concerning this exclusive listing contact:

Ray E. Hulick (B)
521-8812 (phone) 538-1956 (fax)
ray@crshawaii.com

CRS

Commercial Real Estate Services, Inc.
Sales, Leasing, Consulting

1831 Young Street
 Honolulu, Hawaii 96826
 Tel. (808) 521-8812

The information listed above has been obtained from sources we believe to be reliable,
 however, we accept no responsibility for its correctness.