

# PRO•DUC•TION | 195 BOSSTICK BLVD



SUITE 100 AVAILABLE

195 BOSSTICK BLVD | SAN MARCOS | CALIFORNIA | 92069

## FOR MORE INFORMATION:

**ARIC STARCK**

760.431.4211

aric.starck@cushwake.com

**DREW DODDS**

760.431.3863

drew.dodds@cushwake.com

**CUSHMAN & WAKEFIELD**

12830 El Camino Real, Suite 100

San Diego, CA 92130



## PROPERTY FEATURES

- ±33,967 SF available immediately
- ±2,315 SF mezzanine area
- ±2,315 SF office space
- 2 glass roll-up doors
- 6 dock-high doors
- 2 grade-level door
- 28' clear height
- 2,000 A 277/480v
- 60'x52' column spacing
- 120' minimum truck opening
- ESFR fire sprinklers
- 1.90/1,000 parking ratio
- Built in 2018



# PRO•DUC•TION | 195 BOSSTICK BLVD

## SITE PLAN

UNDER NEW OWNERSHIP



### FOR MORE INFORMATION

**ARIC STARCK**  
760.431.4211  
aric.starck@cushwake.com

**DREW DODDS**  
760.431.3863  
drew.dodds@cushwake.com

**CUSHMAN & WAKEFIELD**  
12830 El Camino Real, Suite 100  
San Diego, CA 92130

**PRO•DUC•TION**  
195 BOSSTICK BLVD, SUITE 100  
SAN MARCOS, CA 92069



### AVAILABILITIES

■ AVAILABLE

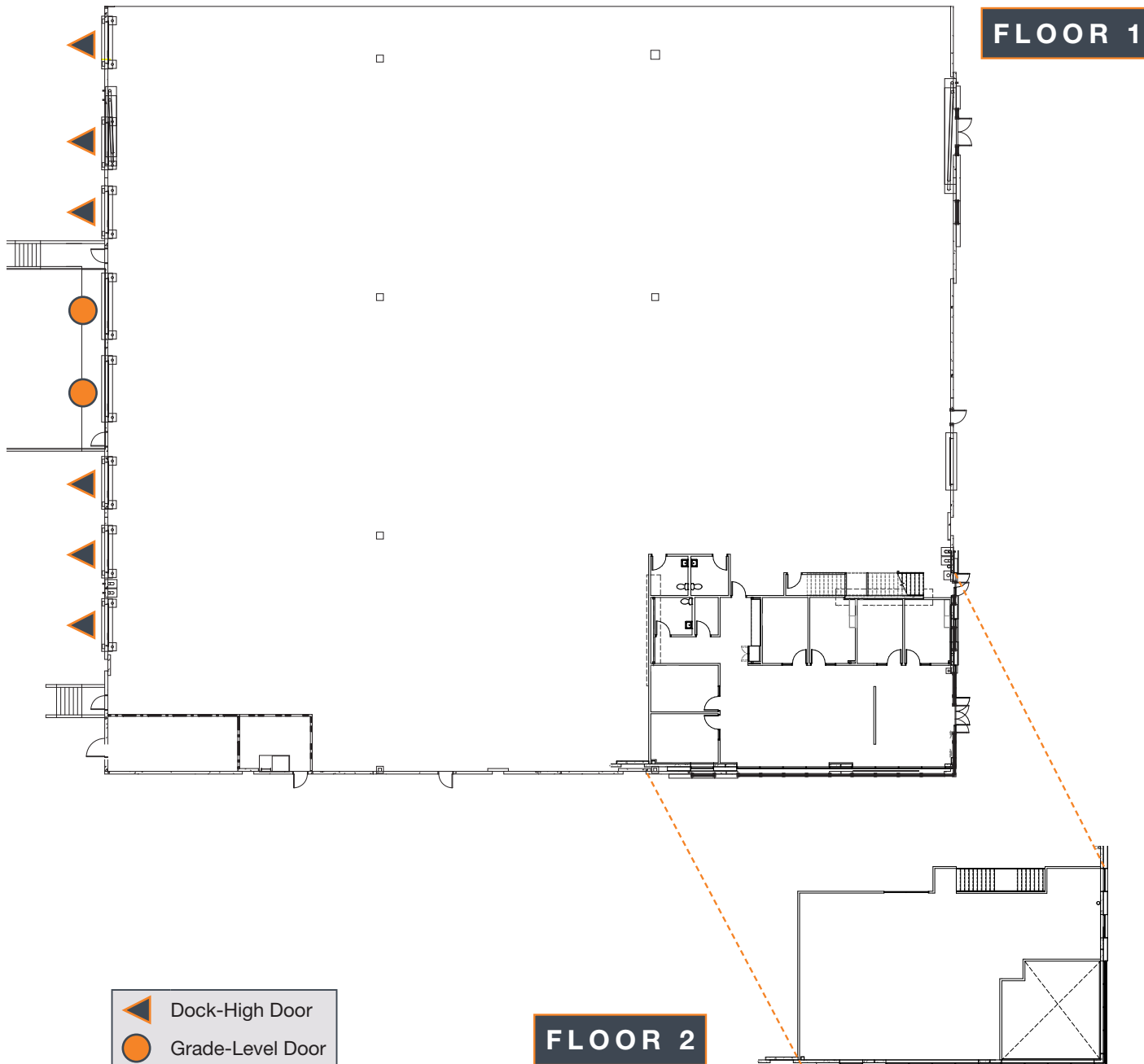
■ OCCUPIED

SUITE	TOTAL SF	OFFICE SF	MEZZANINE SF	DOORS	AVAILABLE
150	20,674	±2,404	±2,404	4 dock-high, 1 grade-level	Occupied
<b>100</b>	<b>33,967</b>	<b>±2,315</b>	<b>±2,315</b>	<b>6 dock-high, 2 grade-level</b>	<b>Immediately</b>

# 195 BOSSTICK BLVD | SUITE 100

33,967 RSF

UNDER NEW OWNERSHIP

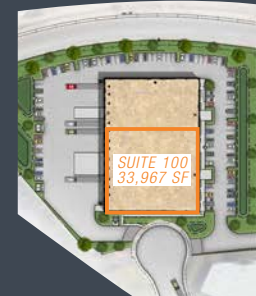


## FOR MORE INFORMATION

**ARIC STARCK**  
760.431.4211  
aric.starck@cushwake.com

**DREW DODDS**  
760.431.3863  
drew.dodds@cushwake.com

**CUSHMAN & WAKEFIELD**  
12830 El Camino Real, Suite 100  
San Diego, CA 92130



**PRO•DUC•TION**  
195 BOSSTICK BLVD, SUITE 100  
SAN MARCOS, CA 92069



# PRO•DUC•TION | 195 BOSSTICK BLVD

UNDER NEW OWNERSHIP



## FOR MORE INFORMATION

**ARIC STARCK**  
760.431.4211  
aric.starck@cushwake.com

**DREW DODDS**  
760.431.3863  
drew.dodds@cushwake.com

**CUSHMAN & WAKEFIELD**  
12830 El Camino Real, Suite 100  
San Diego, CA 92130

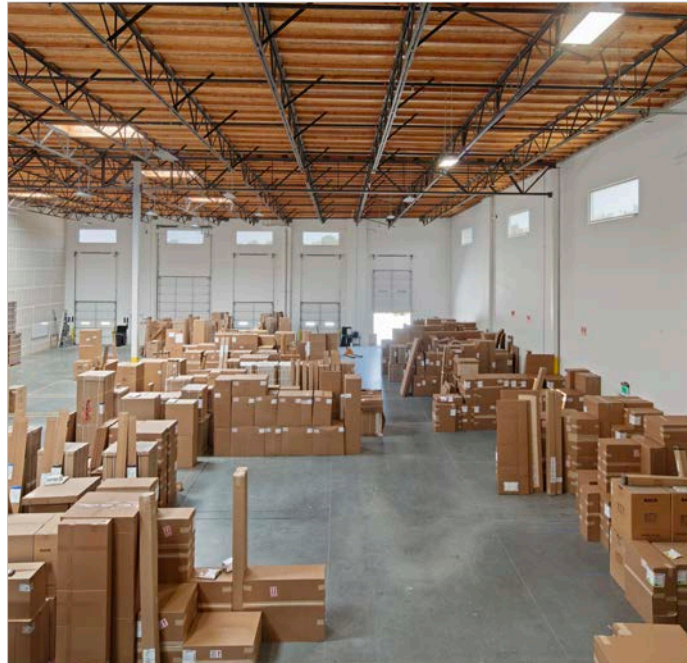
---

**PRO•DUC•TION**  
195 BOSSTICK BLVD, SUITE 100  
SAN MARCOS, CA 92069



# PRO•DUC•TION | 195 BOSSTICK BLVD

UNDER NEW OWNERSHIP



## FOR MORE INFORMATION

**ARIC STARCK**  
760.431.4211  
aric.starck@cushwake.com

**DREW DODDS**  
760.431.3863  
drew.dodds@cushwake.com

**CUSHMAN & WAKEFIELD**  
12830 El Camino Real, Suite 100  
San Diego, CA 92130

---

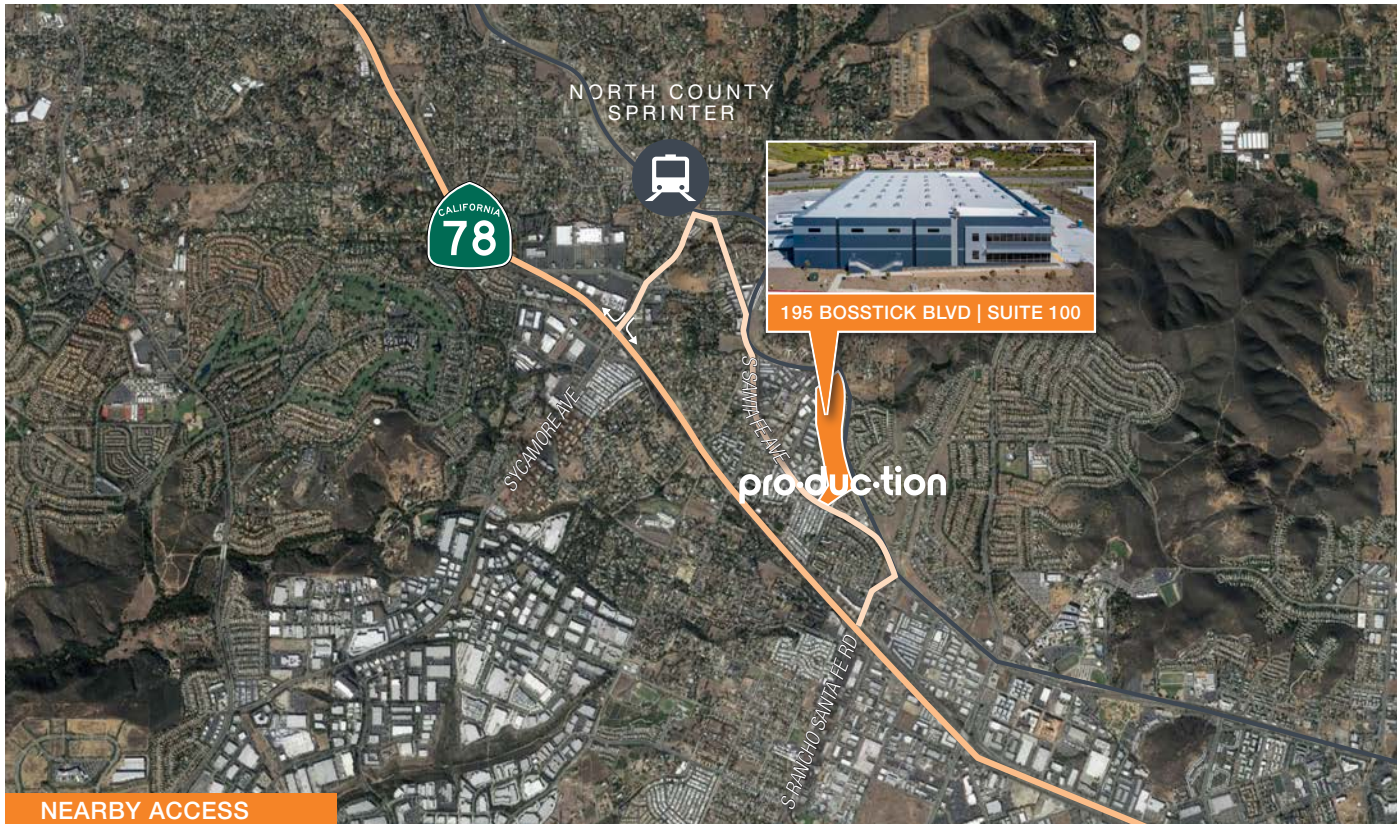
**PRO•DUC•TION**  
195 BOSSTICK BLVD, SUITE 100  
SAN MARCOS, CA 92069



# PRO•DUC•TION | 195 BOSSTICK BLVD

## NEIGHBORS & ACCESS

UNDER NEW OWNERSHIP



### FOR MORE INFORMATION

**ARIC STARCK**  
Executive Vice Chairman  
760.431.4211  
aric.starck@cushwake.com  
Lic 01325461

**DREW DODDS**  
Senior Director  
760.431.3863  
drew.dodds@cushwake.com  
Lic 02021095

**CUSHMAN & WAKEFIELD**  
12830 El Camino Real, Suite 100  
San Diego, CA 92130

**PRO•DUC•TION**  
195 BOSSTICK BLVD, SUITE 100  
SAN MARCOS, CA 92069



### TOP OCCUPIERS

Hunter Industries  
United Parcel Service  
Kaiser Permanente  
Lusardi Construction  
Teamwork Athletic Apparel  
Fluid Components International  
Neo Tech  
Hollandia Dairy  
The Lost Abbey  
Welk Resorts  
Hughes Circuits  
Markestein Beverage  
24-Hour Fitness

### MAJOR INDUSTRIES

Innovation and Specialized Manufacturing  
Connected Tourism and Agriculture  
Biomedical Devices and Products  
Cleantech  
Information, Communications, & Technologies  
Education

### COLLEGES/UNIVERSITIES

Palomar College, San Marcos  
CSU San Marcos, San Marcos  
Coleman University, San Marcos  
University of San Diego  
University of California, San Diego  
San Diego State University, San Diego  
Pima Medical Institute, San Diego  
MiraCosta College, Oceanside  
Kaplan College, Vista  
National University, Carlsbad  
University of St. Augustine

*The information contained herein is believed to be accurate but is not warranted as to its accuracy and may change or be updated without notice. Seller or landlord makes no representation as to the environmental condition of the property and recommends purchaser's or tenant's independent investigation.*