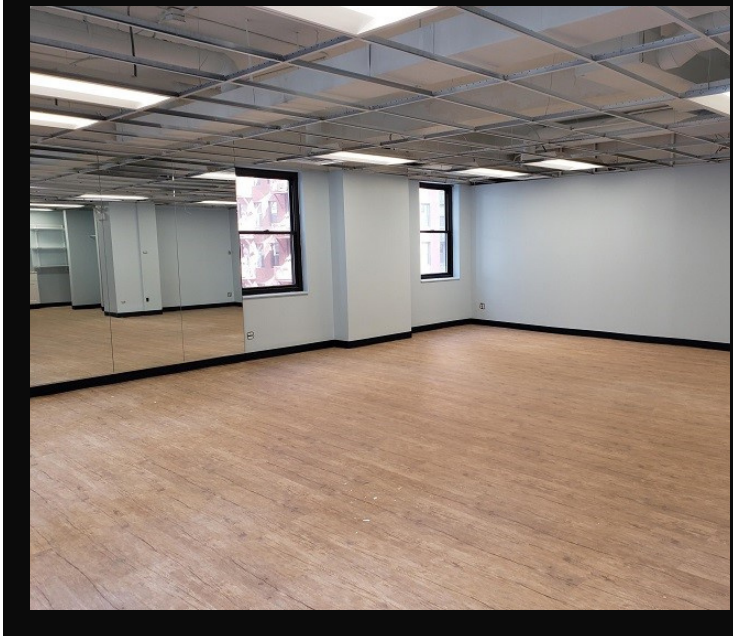


180 W Washington



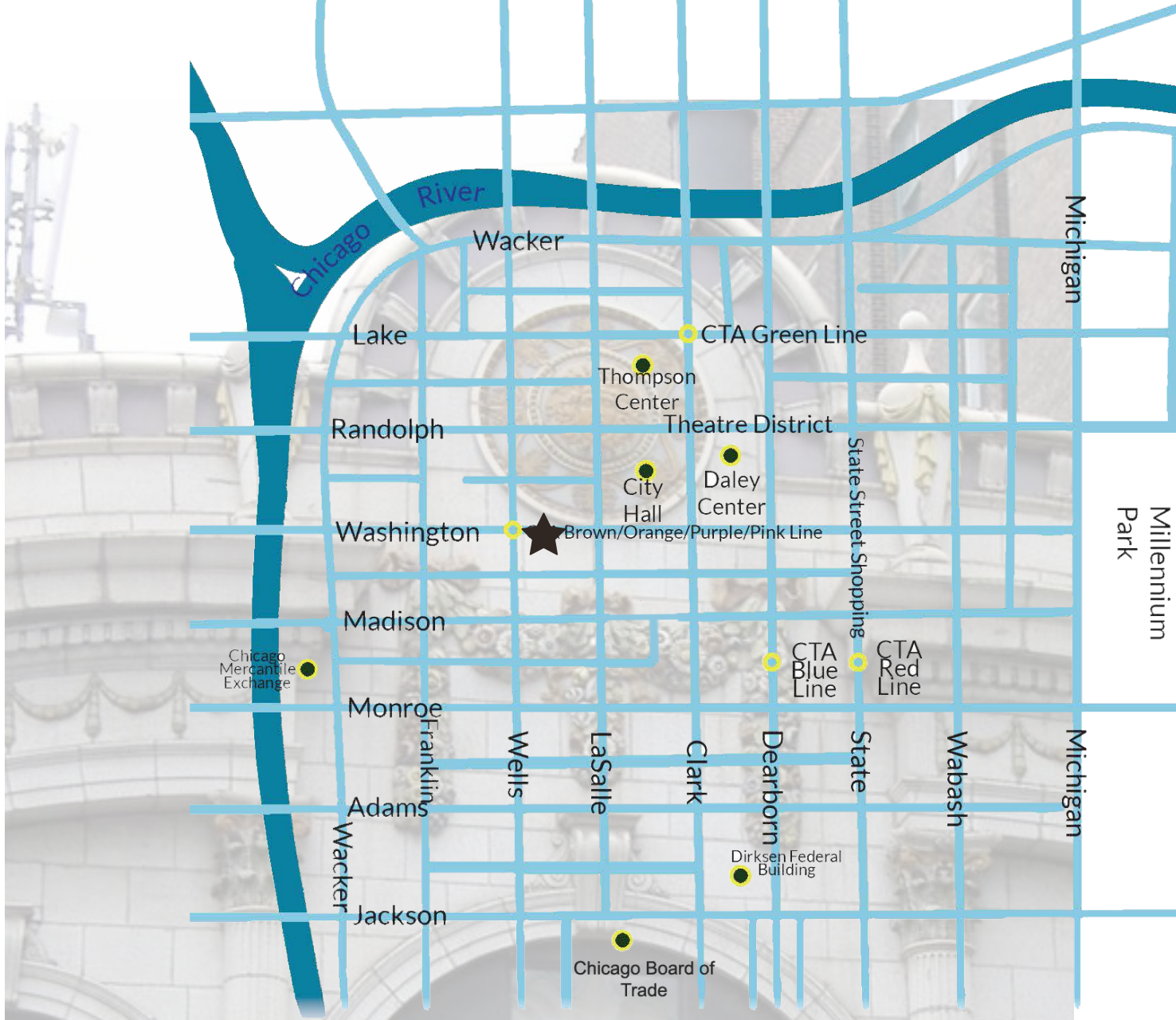
180
W



A beacon of classic turn-of-the-20th-century architecture, 180 W Washington offers a rare combination of creative, unique layouts in an ideal Central Loop location, all for a highly competitive price.

With generous windows bursting with natural light, compact floor plates, prime elevator identity, and multiple onsite amenities, there is no better place for a business to call home.





Standing tall and proud in the bustling Central Loop, 180 W Washington is steps from a plethora of dining, shopping, entertainment, and city services. Within a few blocks lie City Hall, Daley Center, Thompson Center, federal and county courts. Other local highlights include transportation options via Ogilvie Transportation Center, Union Station, CTA buses and trains, the Pedway, and multiple parking options.