

welltower



MEDICAL OFFICE BUILDING SPACE

FOR LEASE

**BAYLOR MEDICAL
PLAZA GRAPEVINE**



**2020 WEST SH-114,
GRAPEVINE TX 76051**

PROPERTY HIGHLIGHTS

61,500 SF professional medical office building adjacent to Baylor Scott & White Medical Center - Grapevine

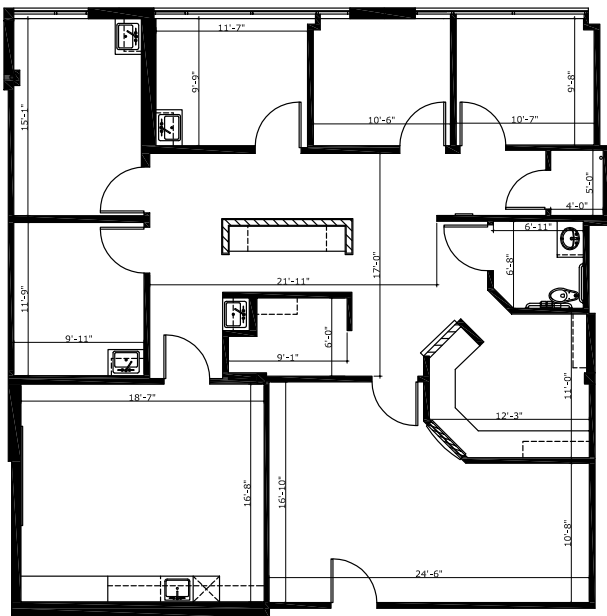
- Excellent visibility from SH-114 (Over 130,000 vehicles per day)
- Surgery Center on site
- Long-established physician tenant mix with synergist referral patterns in place
- Excellent patient accessibility
- BS&W - Grapevine recently earned a Level II Major Trauma Center designation, which makes the 301 bed hospital the only such center in Northeast Tarrant County, and 1 of only 5 in DFW

AVAILABILITY

Suite 180

2,289 SF

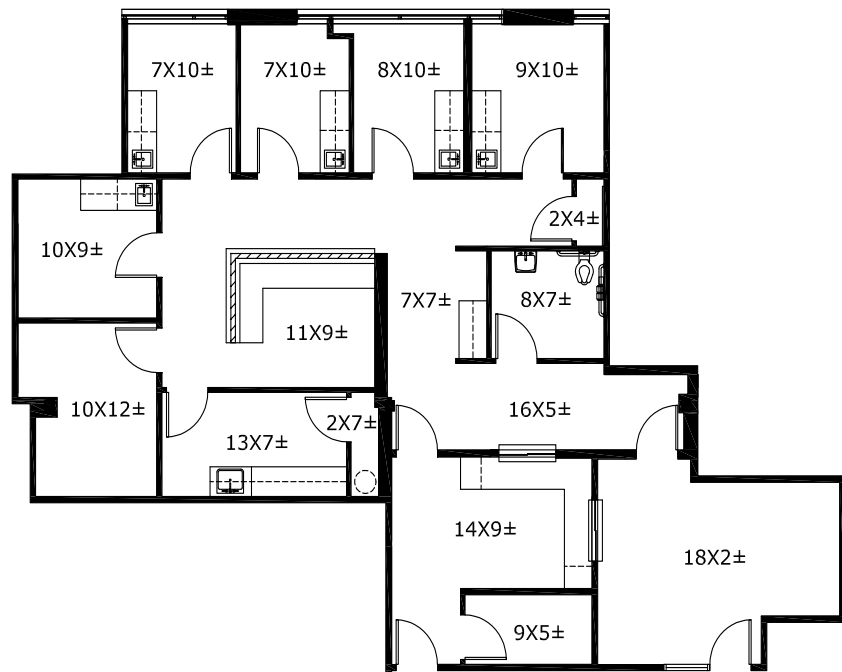
360°
Virtual Tour



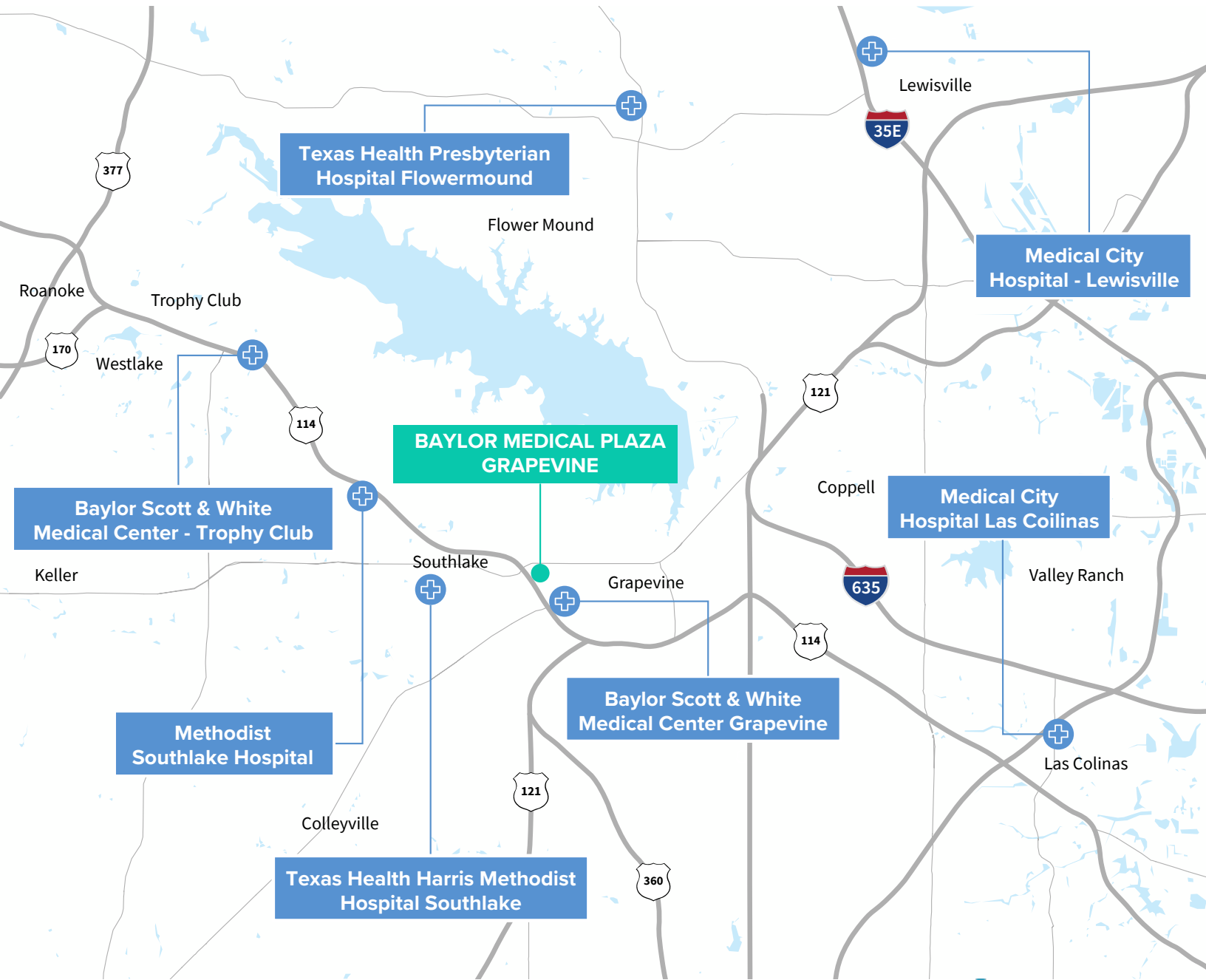
Suite 220

1,990SF

360°
Virtual Tour



PROPERTY LOCATION



LEASING TEAM

ADDRESS: 2020 WEST SH - 114, GRAPEVINE TX 76051

ETHAN GARNER

214.438.6515

ethan.garner@jll.com

MEGAN ANDREW

214.438.1571

megan.andrew@jll.com



Although information has been obtained from sources deemed reliable, neither Owner nor JLL makes any guarantees, warranties or representations, express or implied, as to the completeness or accuracy as to the information contained herein. Any projections, opinions, assumptions or estimates used are for example only. There may be differences between projected and actual results, and those differences may be material. The Property may be withdrawn without notice. Neither Owner nor JLL accepts any liability for any loss or damage suffered by any party resulting from reliance on this information. If the recipient of this information has signed a confidentiality agreement regarding this matter, this information is subject to the terms of that agreement. ©2022 Jones Lang LaSalle IP, Inc. All rights reserved.