

# LITTLETON PROFESSIONAL BUILDING

# AVAILABLE

## OFFICE SPACES



**709 W Littleton Blvd**  
Littleton, CO 80110

## UNITS AVAILABLE

**Suite 50:** \$690/month (234 sqft)

**Suite 30:** \$1195/month (881 sqft)

**Suite 20:** \$ 495/month (222 sqft)

**Suite 40:** \$875/month (440sqft)

Exceptional value in a building that was newly acquired and is under new management, with retro style updated interior common areas, exterior and landscaping. Get in prior to prices rising in the immediate area. Minutes from hip Littleton Downtown directly between Broadway and Santa Fe for easy access across the city. Walking distance to parks, restaurants and one block to the new Cherry Cricket Littleton.

CHRIS LAMEE  
*Broker/Owner*

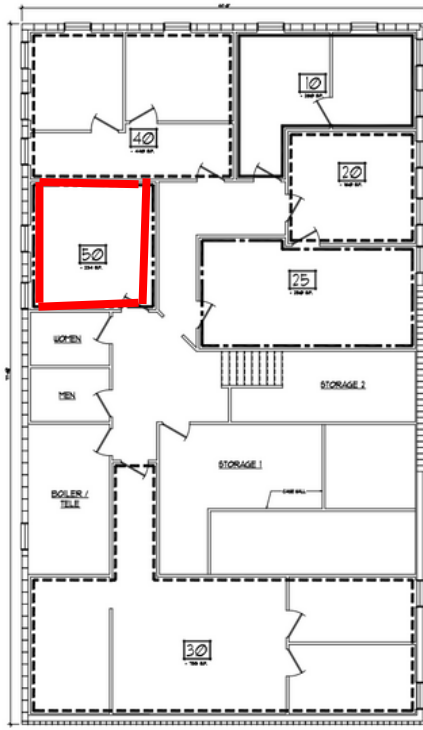


(303) 748-3843



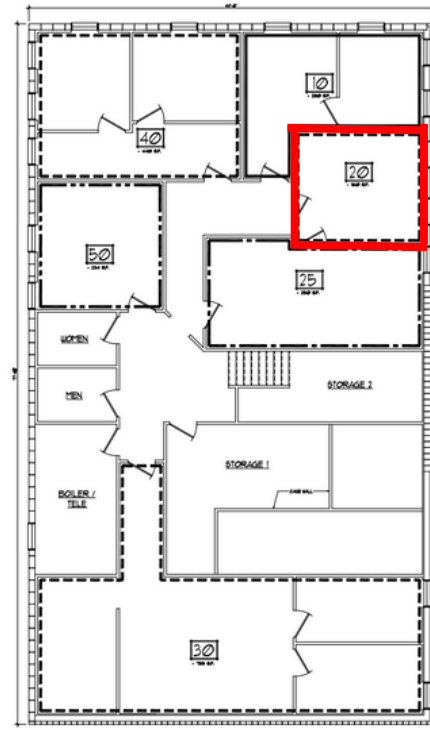
chris@banyanrealestate.com

# LITTLETON PROFESSIONAL BUILDING



## Suite50

Suite50-\$690/mos/FSG  
Lease an updated private office



## Suite 20

Suite 20-\$495/mos/FSG  
Lease a private single office suite

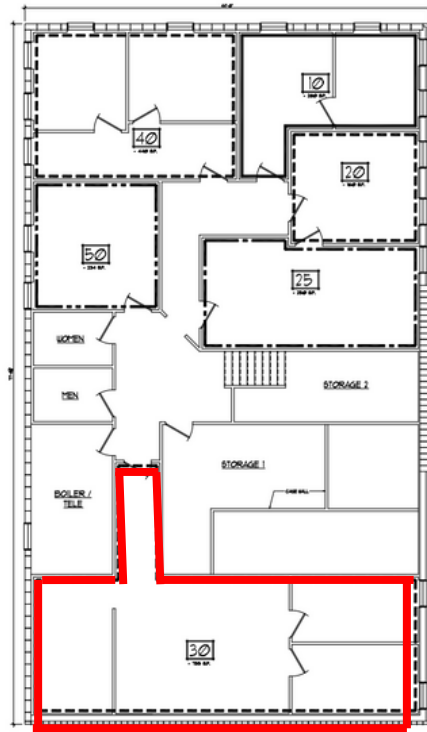


\*Square footage numbers are BOMA measurements with a common area factor. All information is considered reliable but not guaranteed.

CHRIS LAMEE  
Broker/Owner

(303) 748-3843  
chris@banyanrealestate.com

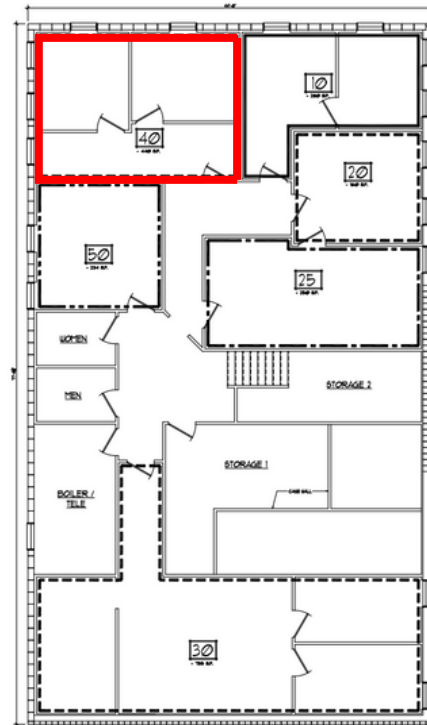
# LITTLETON PROFESSIONAL BUILDING



## Suite 30

Suite 30-\$1195/mos

Lease a private suite with 2 private offices  
on lower level



## Suite 40

Suite 40-\$875/mos

Lease a private suite with 2 private offices  
on lower level



\*Square footage numbers are BOMA measurements with a common area factor. All information is considered reliable but not guaranteed.

CHRIS LAMEE  
Broker/Owner

(303) 748-3843  
chris@banyanrealestate.com