

Business available for purchase



# For sale or lease

1717 South Division Avenue, Orlando, FL 32805

6,551± SF available



# Property details

## Property specifications

- 6,551± SF free-standing building
- 883 SF of office
- 3 grade doors
- Block/metal construction
- Built in 1947 and 1983
- 0.34 acres
- Zoned I-G/T/AN/SP, City of Orlando
- Fully fenced and gated lot
- Business available for purchase
- Sale: \$1,500,000 (\$228.97/SF)
- Lease: \$12,000/mo NNN



	30 minutes	60 minutes	120 minutes
Total population	3,877,806	6,540,667	10,055,001
Total households	1,470,052	2,558,726	4,010,856
Average HH income	\$94,876	\$91,944	\$93,550
Total businesses	155,617	256,099	396,030
Total employees	1,654,169	2,658,951	4,013,717

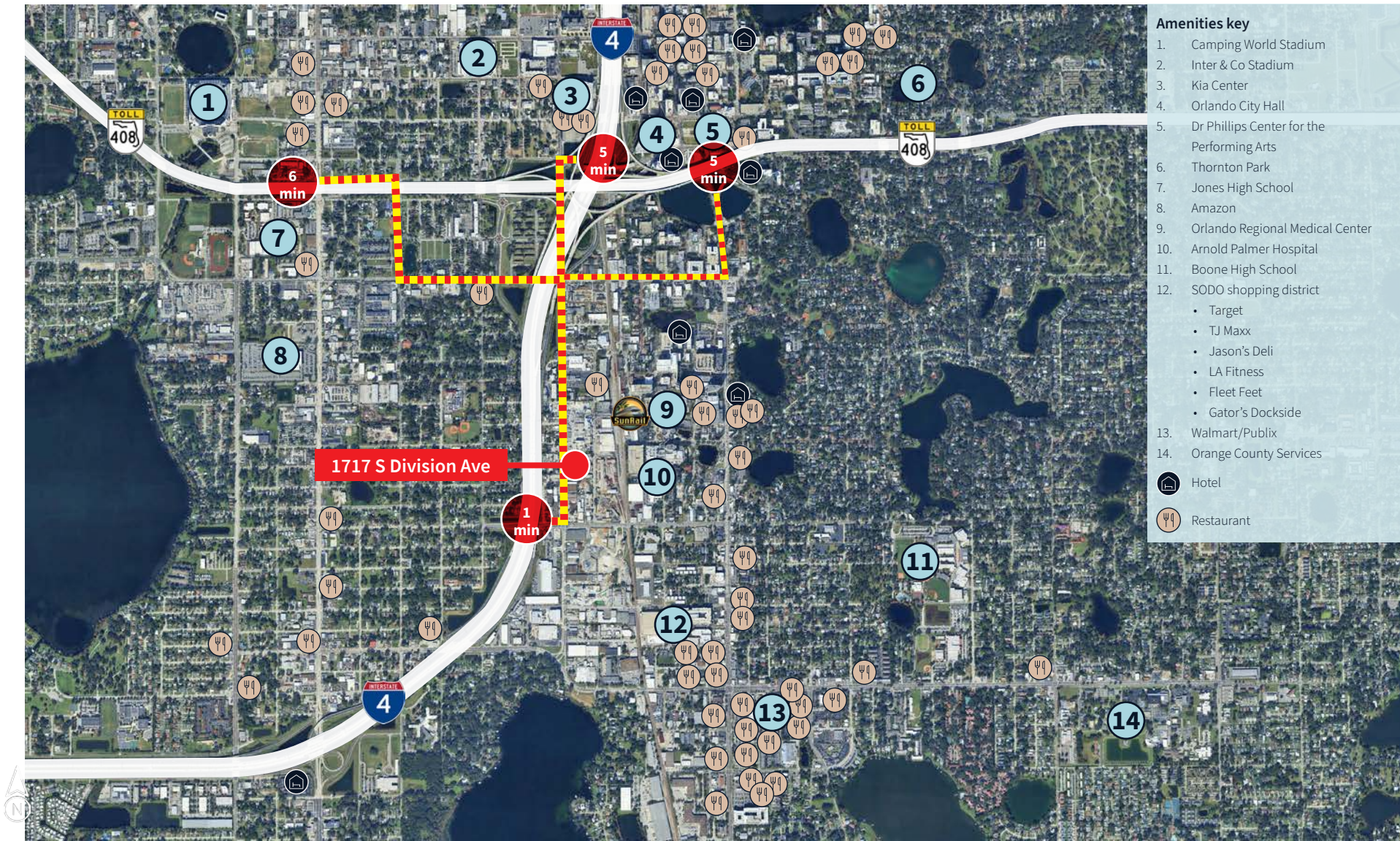


## Property photos





Access and amenities





## Location

### Advantages

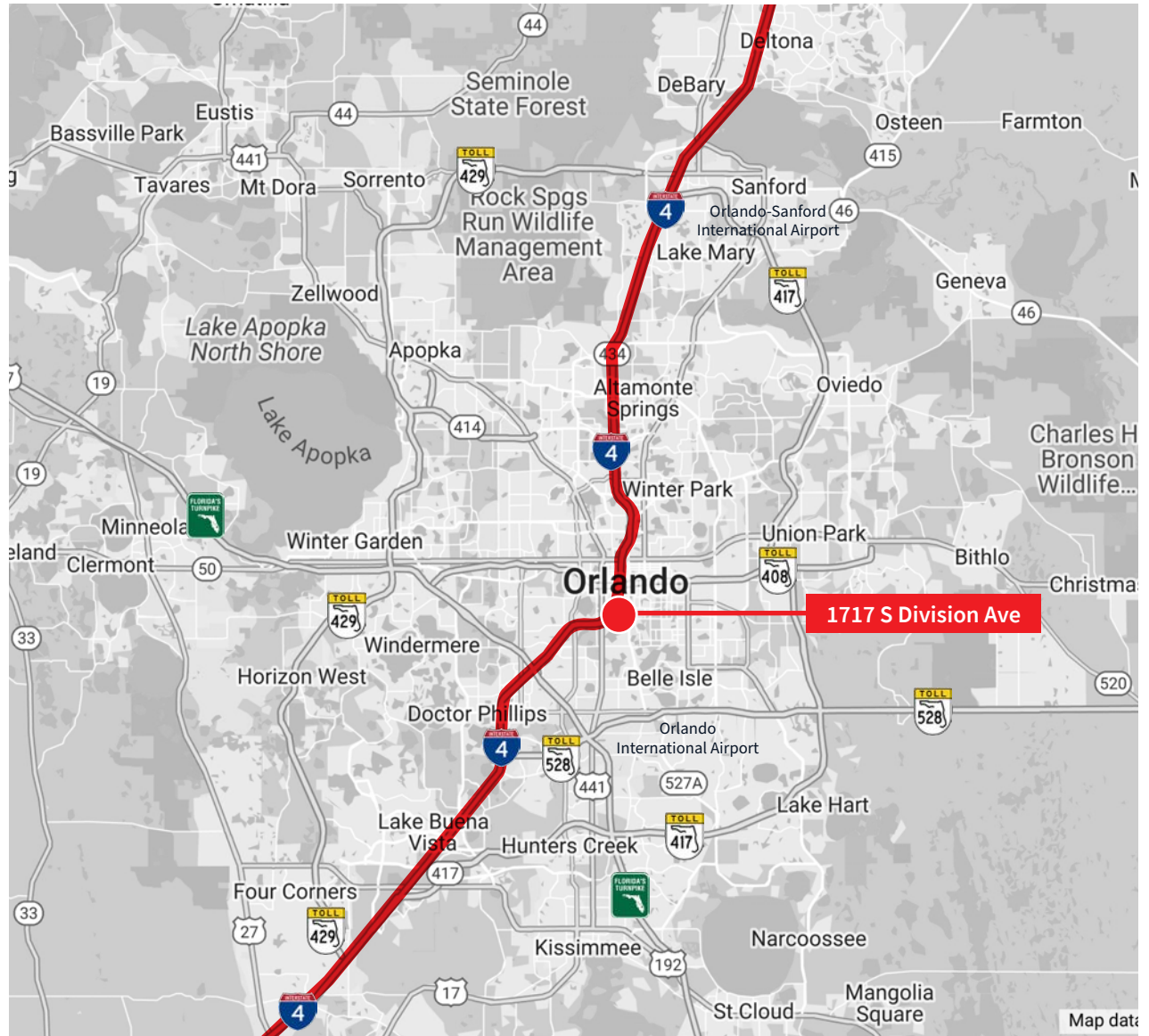
- Provides immediate access to Interstate 4 and excellent access to US Highway 441 and the East-West Expressway (SR 408)
- Located just south of Downtown Orlando and its numerous amenities, including SoDo, Kia Center and Dr Phillips Center for the Performing Arts
- Approximately 20 minutes to Orlando International Airport, and most major theme parks including EPCOT, Universal Studios Florida and Sea World

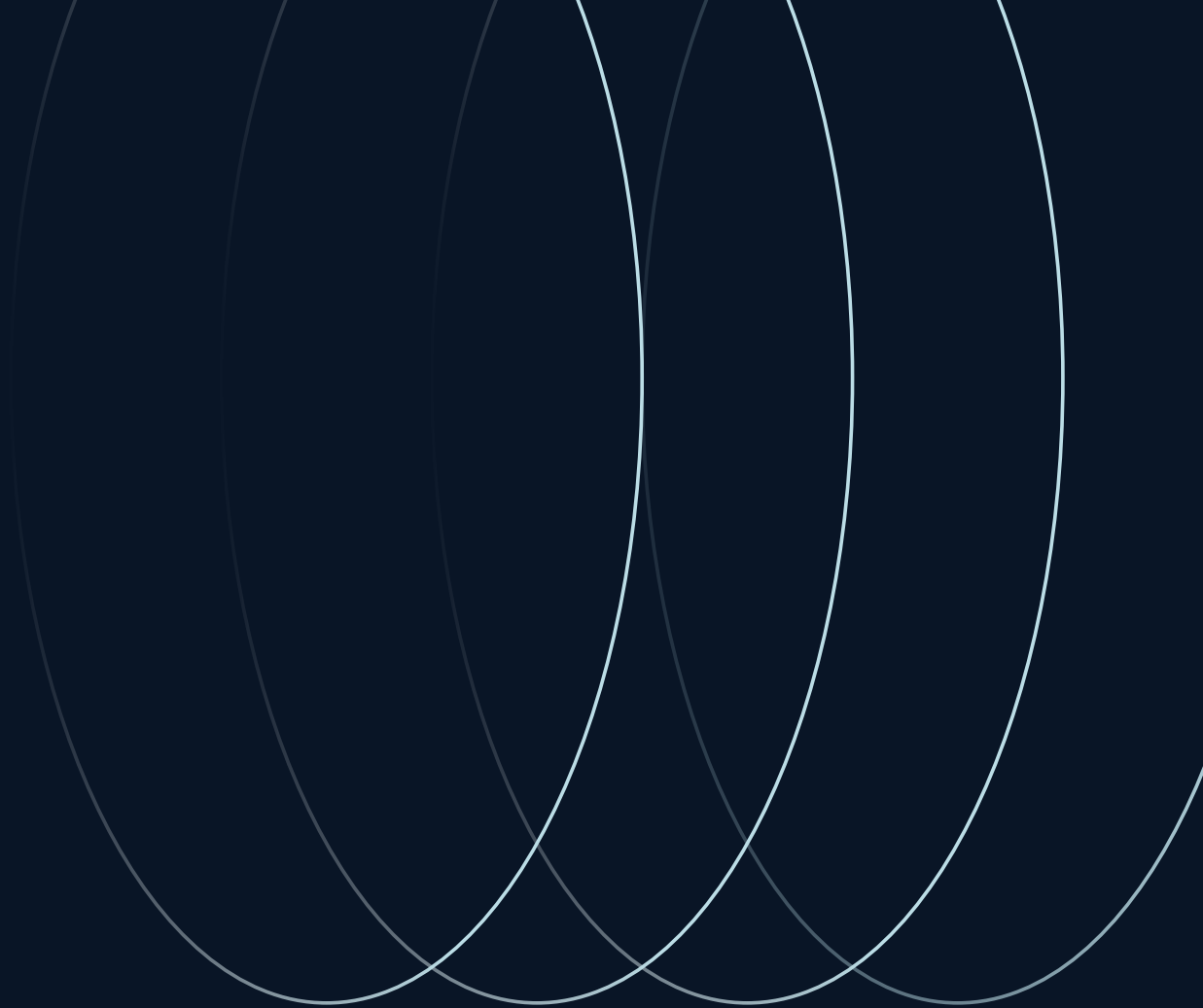
### Drive time to

- Interstate 4 - 1 minutes
- State Road 408 - 5 minutes
- Florida's Turnpike - 8 minutes
- State Road 417 - 11 minutes
- State Road 429 - 15 minutes
- State Road 528 - 16 minutes

### Distance to

- Tampa - 83.1 miles
- Jacksonville - 143 miles
- Miami - 234 miles
- Atlanta, GA - 439 miles





**JLL**

**W. Malcolm Clayton**

*Vice President*

Malcolm.Clayton@jll.com

+1 407 670 9115

Although information has been obtained from sources deemed reliable, JLL does not make any guarantees, warranties or representations, express or implied, as to the completeness or accuracy as to the information contained herein. Any projections, opinions, assumptions or estimates used are for example only. There may be differences between projected and actual results, and those differences may be material. JLL does not accept any liability for any loss or damage suffered by any party resulting from reliance on this information. If the recipient of this information has signed a confidentiality agreement with JLL regarding this matter, this information is subject to the terms of that agreement. ©2025. Jones Lang LaSalle Brokerage, Inc. All rights reserved.

Jones Lang LaSalle Brokerage, Inc., a licensed real estate broker across the US | 250 South Orange Avenue, Suite 700P, Orlando, FL 32801