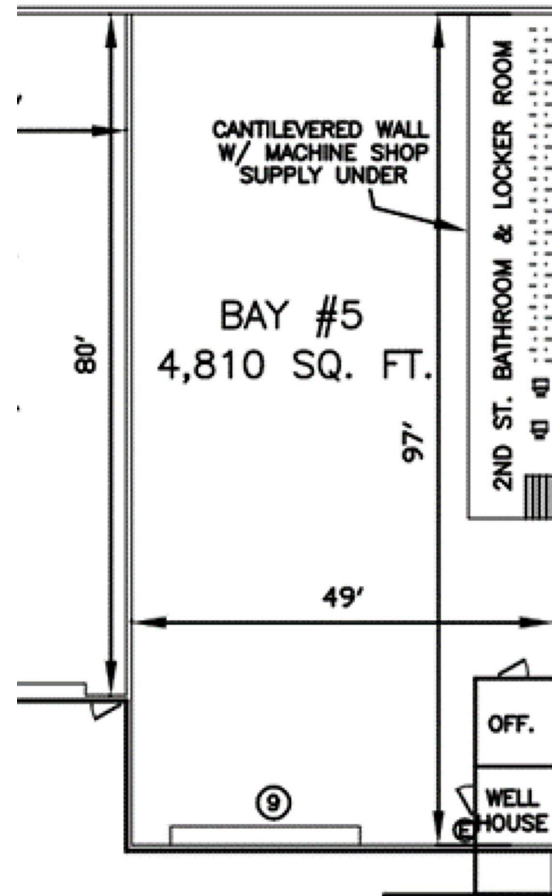


REGAL BUILDERS

land development & consulting

IMMEDIATELY AVAILABLE FOR LEASE
4,810 sq. ft. Industrial Space within Multi-Tenant Building



- ◆ Located in Upper Providence Township, Montgomery County PA
- ◆ Close proximity to Rt. 422 — Oaks Exit
- ◆ Within established industrial park and immediate access to highly traveled Station Avenue
- ◆ Utilities: PECO, electric & water (not included in monthly costs)
- ◆ New LED lighting and fire sprinkler system
- ◆ 2 interior cranes inside of space
- ◆ Includes large bay garage door into space, 2 parking spaces and 25' +/- ceilings
- ◆ Gated entrance to site

Contact: Justin Olear
610-324-1918
jolear@regalbuilders.net