

ESTD



1877

THE WASHINGTON

NORTH LOOP





ESTD



1877

THE WASHINGTON

NORTH LOOP

The Washington is a stunning historic **Class A warehouse office building** in the heart of the North Loop, seamlessly blending old-world charm with modern functionality. Built in 1885, this architectural gem boasts **exposed brick, tall ceilings, and an efficient floor plate**, creating an inspiring and spacious work environment.

25,731 SF OFFICE SPACE

1,057 SF PRIVATE ROOF DECK

ON-SITE PARKING

NEARBY



DINING



BEER & WINE



RETAIL



NIGHTLIFE



GYMS



HOTELS



COFFEE



THE WASHINGTON



PARKING



LIGHT RAIL LINES

Green Line (Central)

Blue Line (Hiawatha)

Northstar Commuter





HALF MILE

WASHINGTON AVE

ONE MILE TO
THE HEART OF
DOWNTOWN

HALF MILE

4

7,627 SF + 1,057 SF ROOF DECK

3

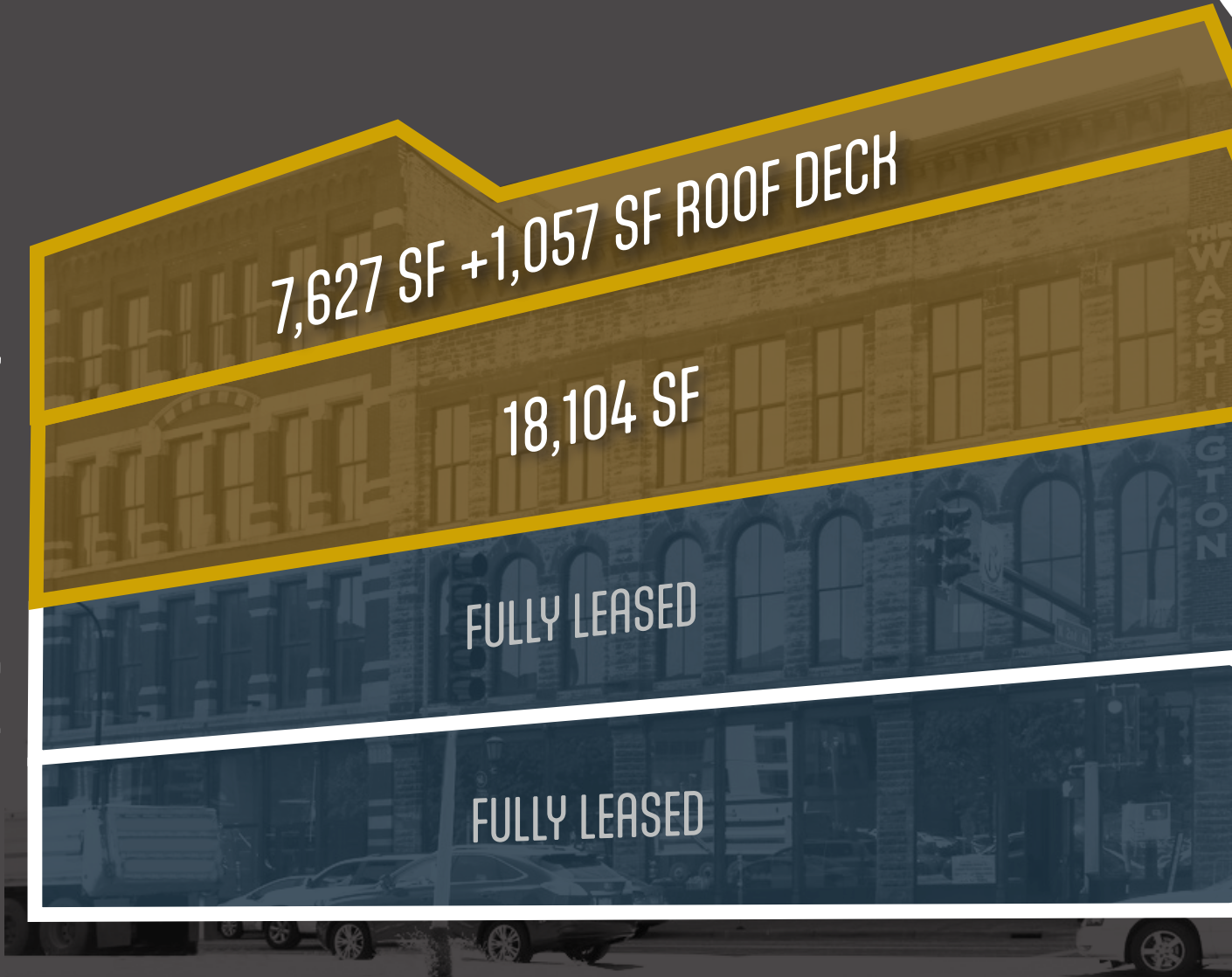
18,104 SF

2

FULLY LEASED

1

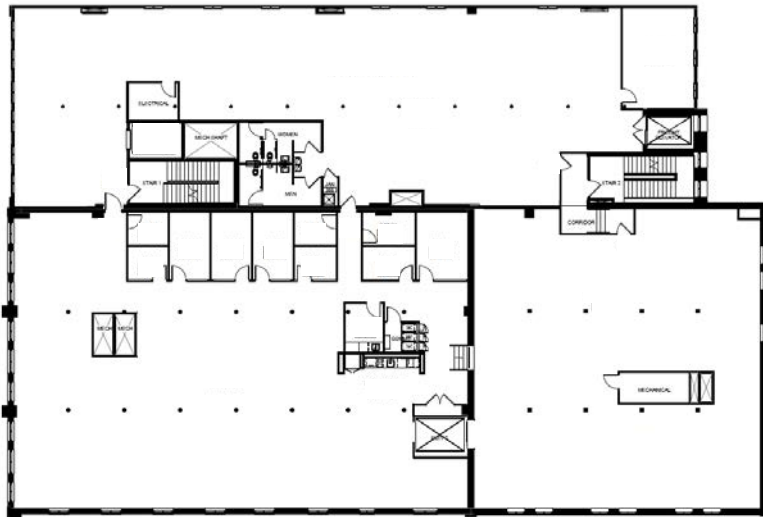
FULLY LEASED



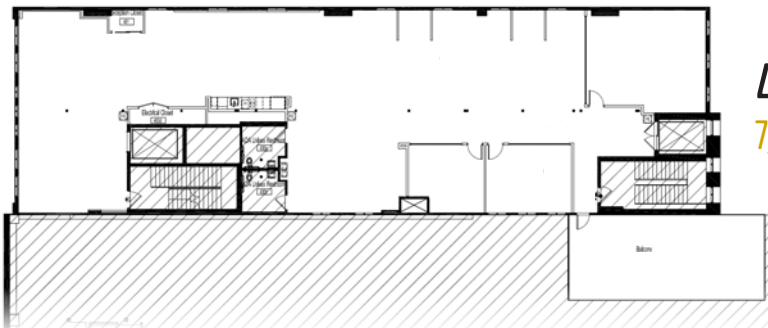
AVAILABILITY

One of The Washington's standout features is the abundance of natural light, which floods the space through large industrial-style windows, enhancing both aesthetics and productivity. The building also offers premium amenities, including onsite ALTR fitness, perfect for tenants who prioritize health and wellness.

FLOOR PLANS



3RD FLOOR
18,104 SF



4TH FLOOR
7,627 SF + 1,057 SF ROOF DECK

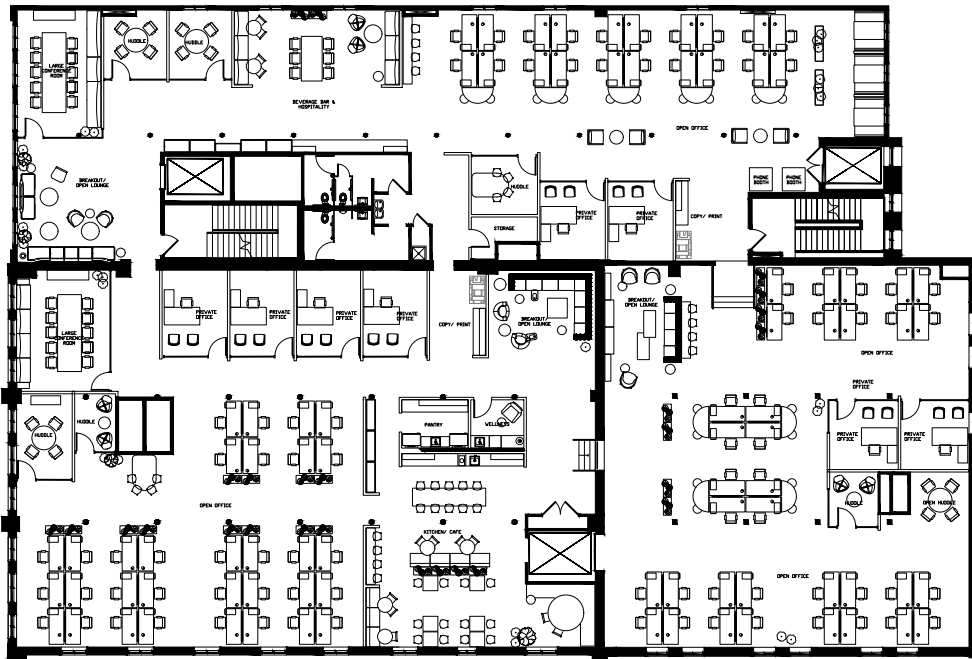
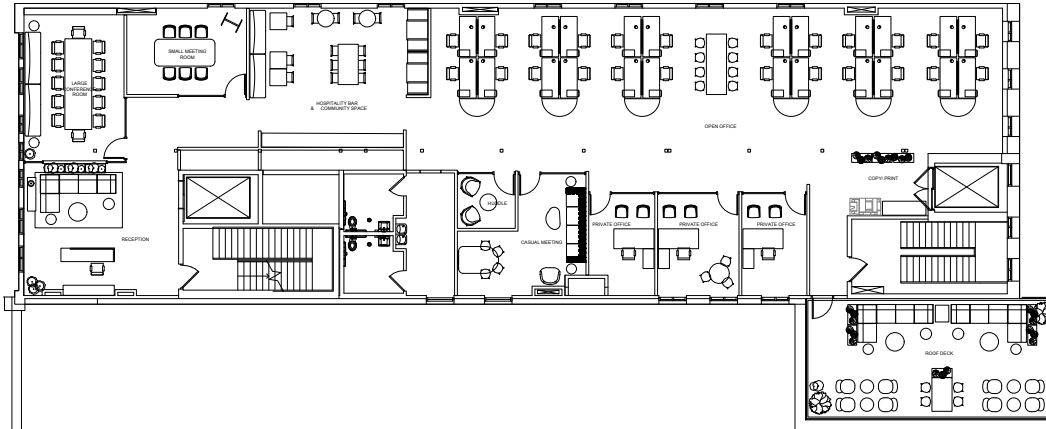
With its **prime location, historic character, and modern amenities**, The Washington is an ideal workspace for businesses looking to elevate their office experience in **one of Minneapolis' most vibrant neighborhoods**.





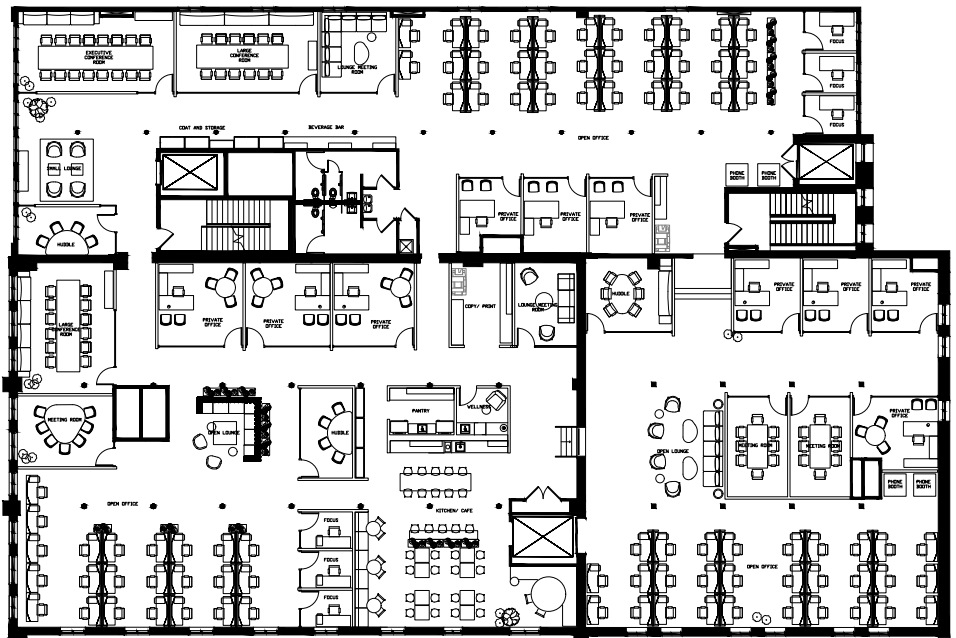
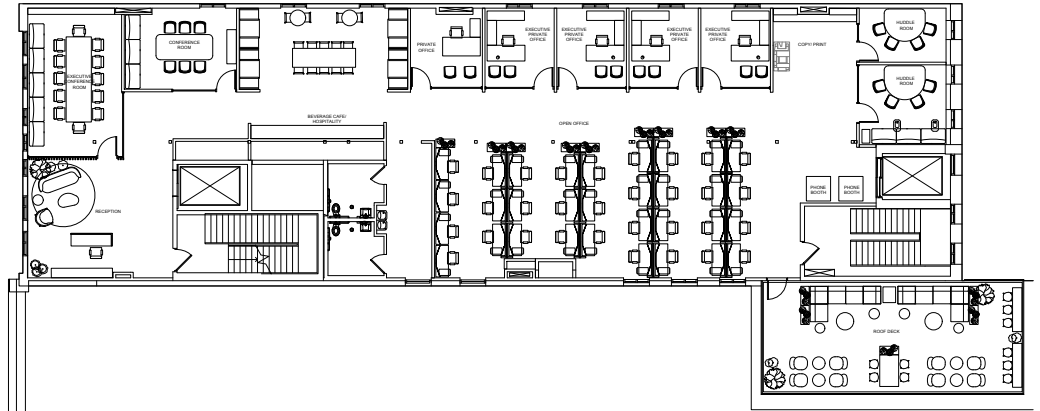
CREATIVE SERVICES

SAMPLE LAYOUT



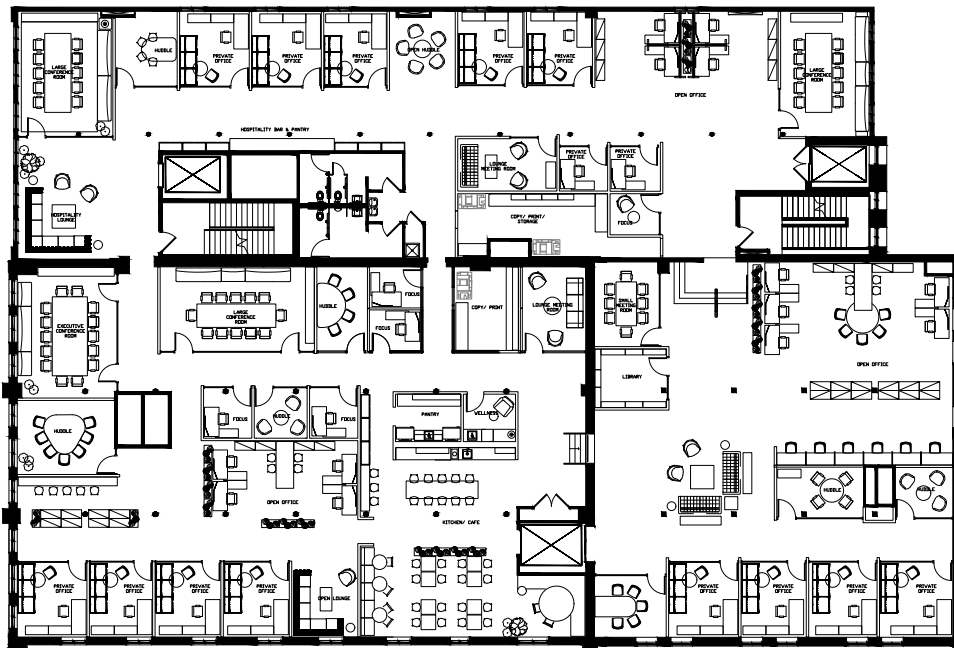
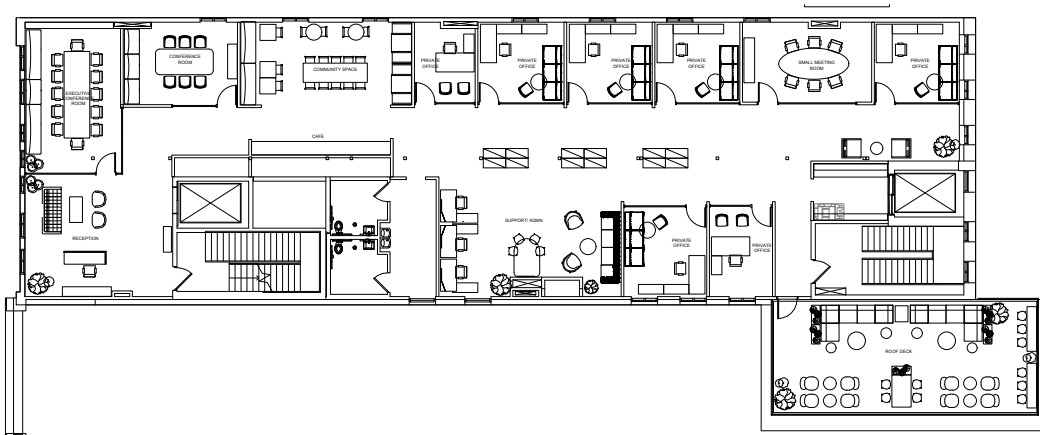
FINANCIAL SERVICES

SAMPLE LAYOUT



LEGAL SERVICES

SAMPLE LAYOUT







PUBLIC
DOMAIN



TULLIBEE



ビリー 寿司
BILLY
SUSHI



DESSERT EDWARDS KITCHEN





**NORTH
LOOP**
NEIGHBORHOOD

The North Loop boasts a rich history as an important contributor to the Minneapolis economy. The atmosphere and architecture in the area blend old with new, creating a dynamic neighborhood that continues to grow and evolve as a well-balanced place to live, work and play.

Residential attraction to this neighborhood continues to gain momentum as over 7,200 residents call the North Loop home. Over 5,000 residential units combine with nearly 1.4M SF of Class A office space to create the live-work-play for today's young professionals.

There is an energy and vibrancy in the North Loop that is experienced by simply walking the neighborhood. There is a full range of convenience retail, unique shops, and formal and informal restaurants. Local art galleries, fitness centers, and other boutiques that serve this area provide employees and residents convenience, a cultural experience, and a sense of community.



MARTINPATRICK3





ESTD



1877

THE WASHINGTON

NORTH LOOP

WASHINGTON AVE



Located on Washington Avenue, The Washington sits in one of the most sought-after areas of the North Loop, surrounded by top-tier restaurants, coffee shops, and retail destinations. Adding to its appeal is a rooftop terrace, providing breathtaking city views and a great space for meetings, breaks, or after-work socializing.

ESTD



1877

THE WASHINGTON

NORTH LOOP

121 N Washington Ave | Minneapolis, MN 55401

TOM TRACY

612 280 3299

tom.tracy@cushwake.com

HARRISON RUST

651 331 6425

harrison.rust@cushwake.com

KATIE TUFFORD

612 413 5007



ASANA
PARTNERS



CUSHMAN &
WAKEFIELD