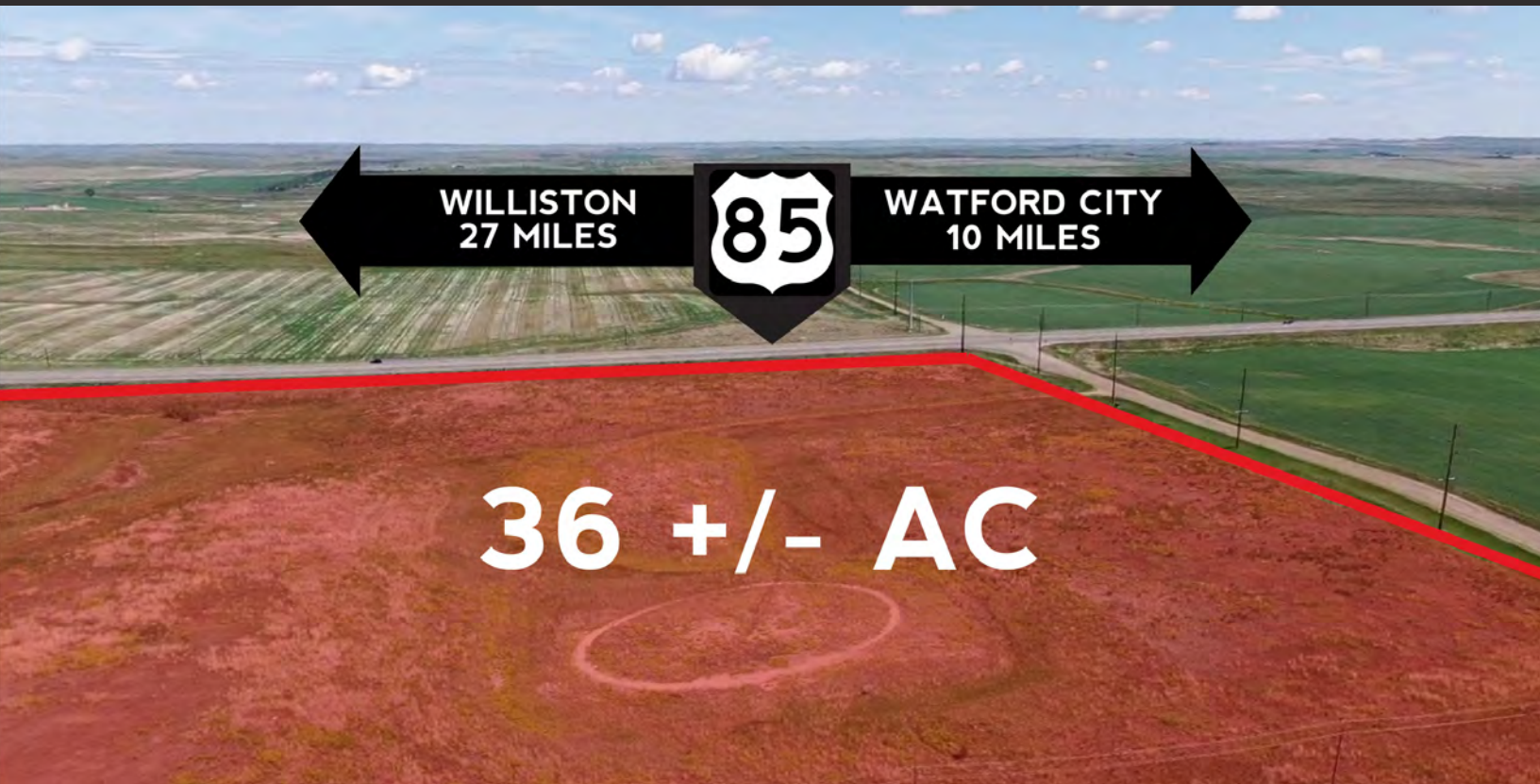


36 AC OF DEVELOPABLE LAND ON US-85

TEN MILES WEST OF WATFORD CITY

2695 140TH AVENUE NW ALEXANDER, ND 58831

FOR SALE



SALE PRICE CALL FOR PRICING

PROPERTY HIGHLIGHTS

- 36 +/- AC of Vacant Land with 1,200 ft of Highway Frontage on US-85
- Zoned Heavy Industrial
- Strategically Located on Highway 85 Between Patriot Fuels Truck Stop and Basin Electric's Lonesome Creek Generator Station
- High-Capacity Transmission Line Runs Along the Eastern Edge of the Property from Nearby 330MV Lonesome Creek Station



Mike Elliott
Managing Broker
701.713.6606
mike.elliott@erescompanies.com



36 AC OF DEVELOPABLE LAND ON US-85

TEN MILES WEST OF WATFORD CITY

2695 140TH AVENUE NW ALEXANDER, ND 58831

FOR SALE

AERIAL



Mike Elliott
Managing Broker
701.713.6606
mike.elliott@erescompanies.com

ERES | erescompanies.com



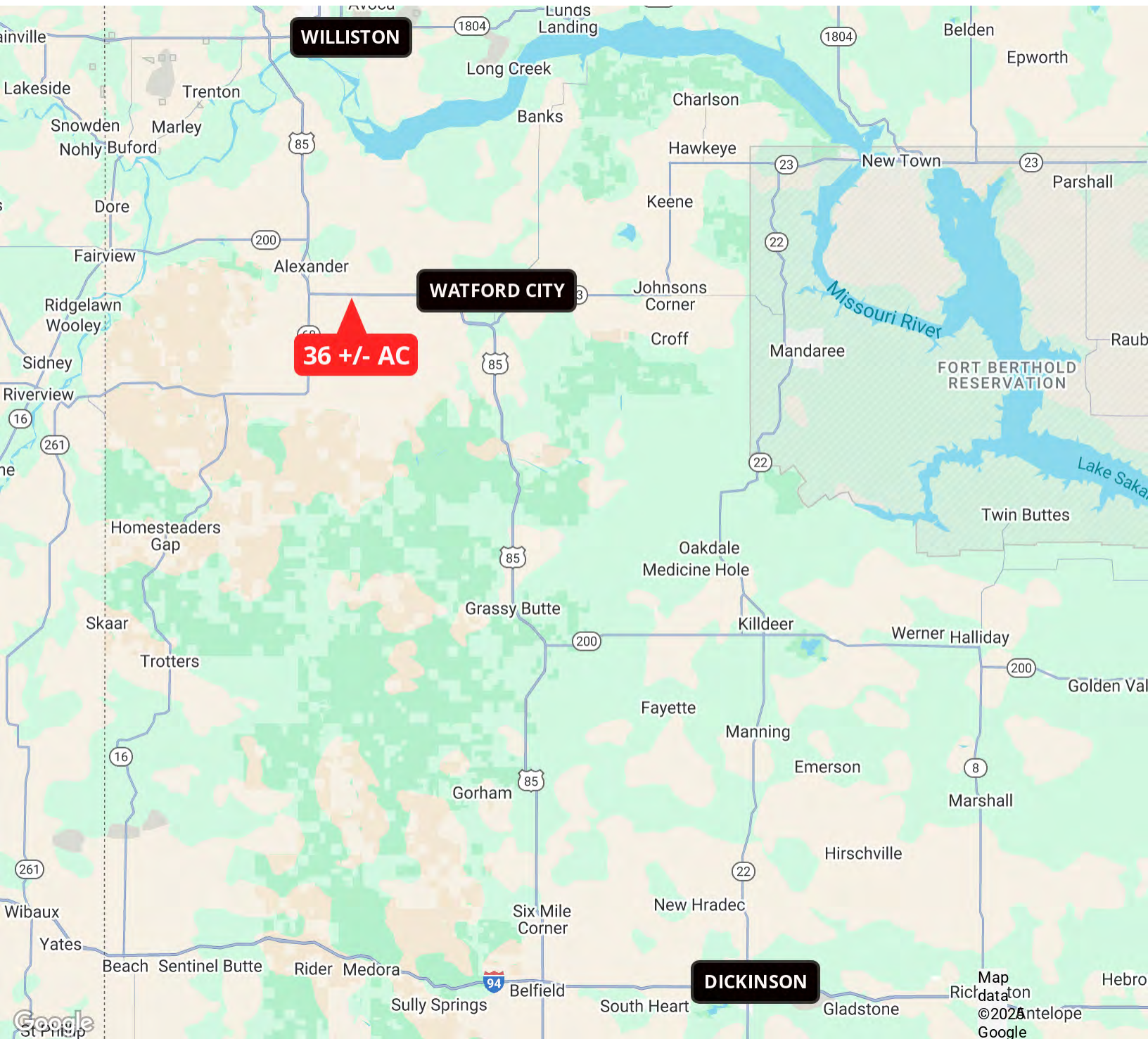
36 AC OF DEVELOPABLE LAND ON US-85

TEN MILES WEST OF WATFORD CITY

2695 140TH AVENUE NW ALEXANDER, ND 58831

FOR SALE

LOCATION MAP



Mike Elliott
Managing Broker
701.713.6606
mike.elliott@erescompanies.com



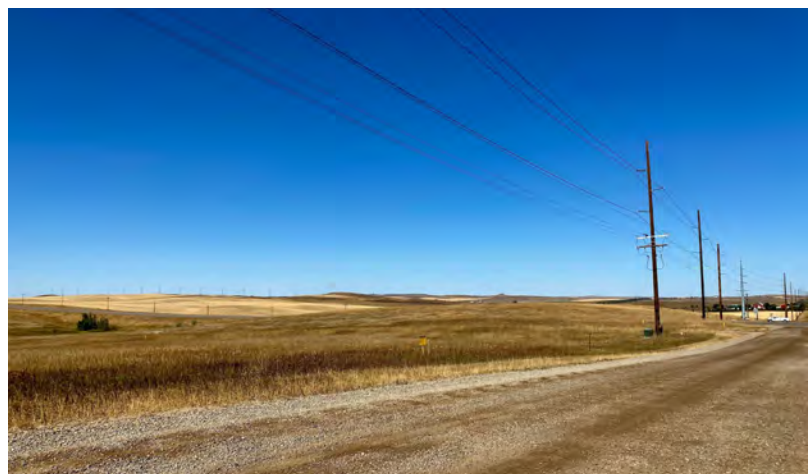
36 AC OF DEVELOPABLE LAND ON US-85

TEN MILES WEST OF WATFORD CITY

2695 140TH AVENUE NW ALEXANDER, ND 58831

FOR SALE

ADDITIONAL PHOTOS



Mike Elliott
Managing Broker
701.713.6606
mike.elliott@erescompanies.com

ERES | erescompanies.com



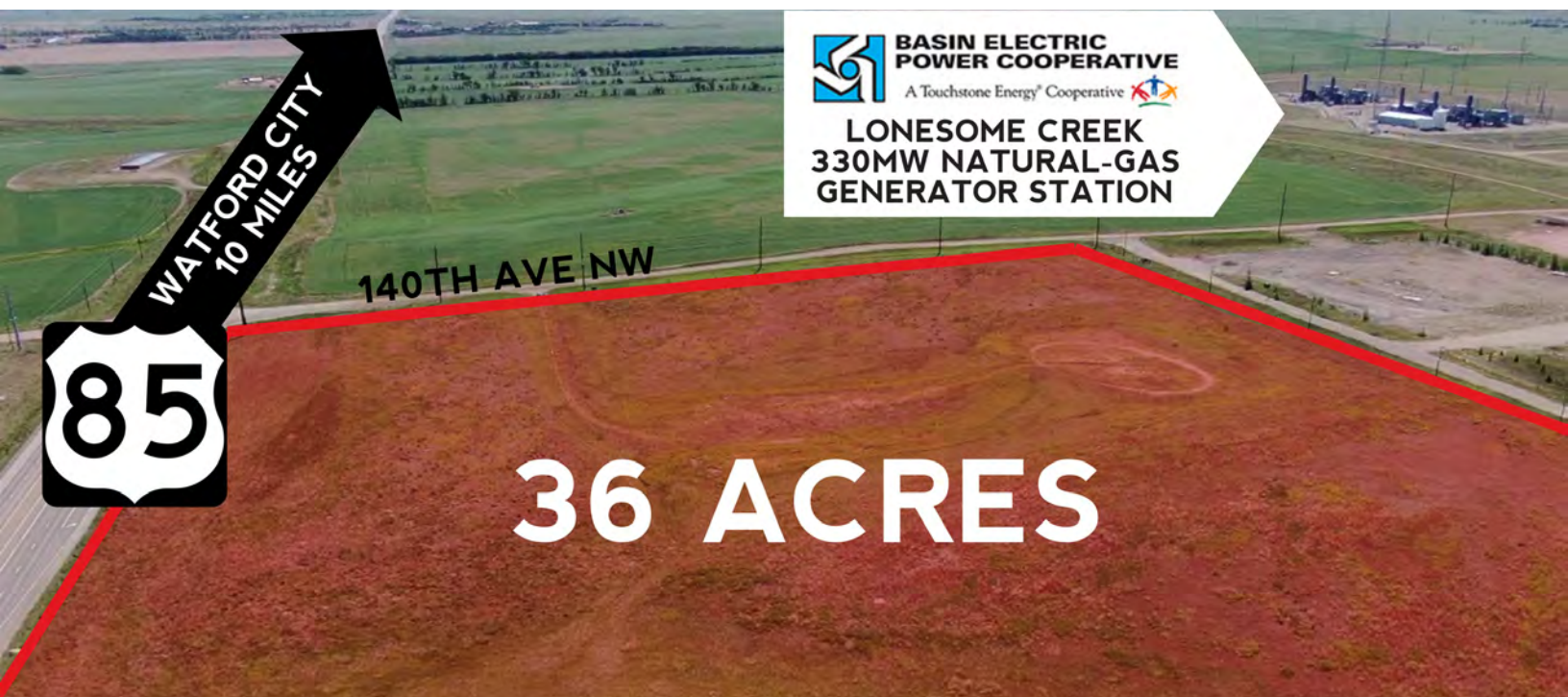
36 AC OF DEVELOPABLE LAND ON US-85

TEN MILES WEST OF WATFORD CITY

2695 140TH AVENUE NW ALEXANDER, ND 58831

FOR SALE

ADDITIONAL PHOTOS



Mike Elliott
Managing Broker
701.713.6606
mike.elliott@erescompanies.com



36 AC OF DEVELOPABLE LAND ON US-85

TEN MILES WEST OF WATFORD CITY

2695 140TH AVENUE NW ALEXANDER, ND 58831

FOR SALE

RETAILER MAP



Mike Elliott
Managing Broker
701.713.6606
mike.elliott@erescompanies.com

