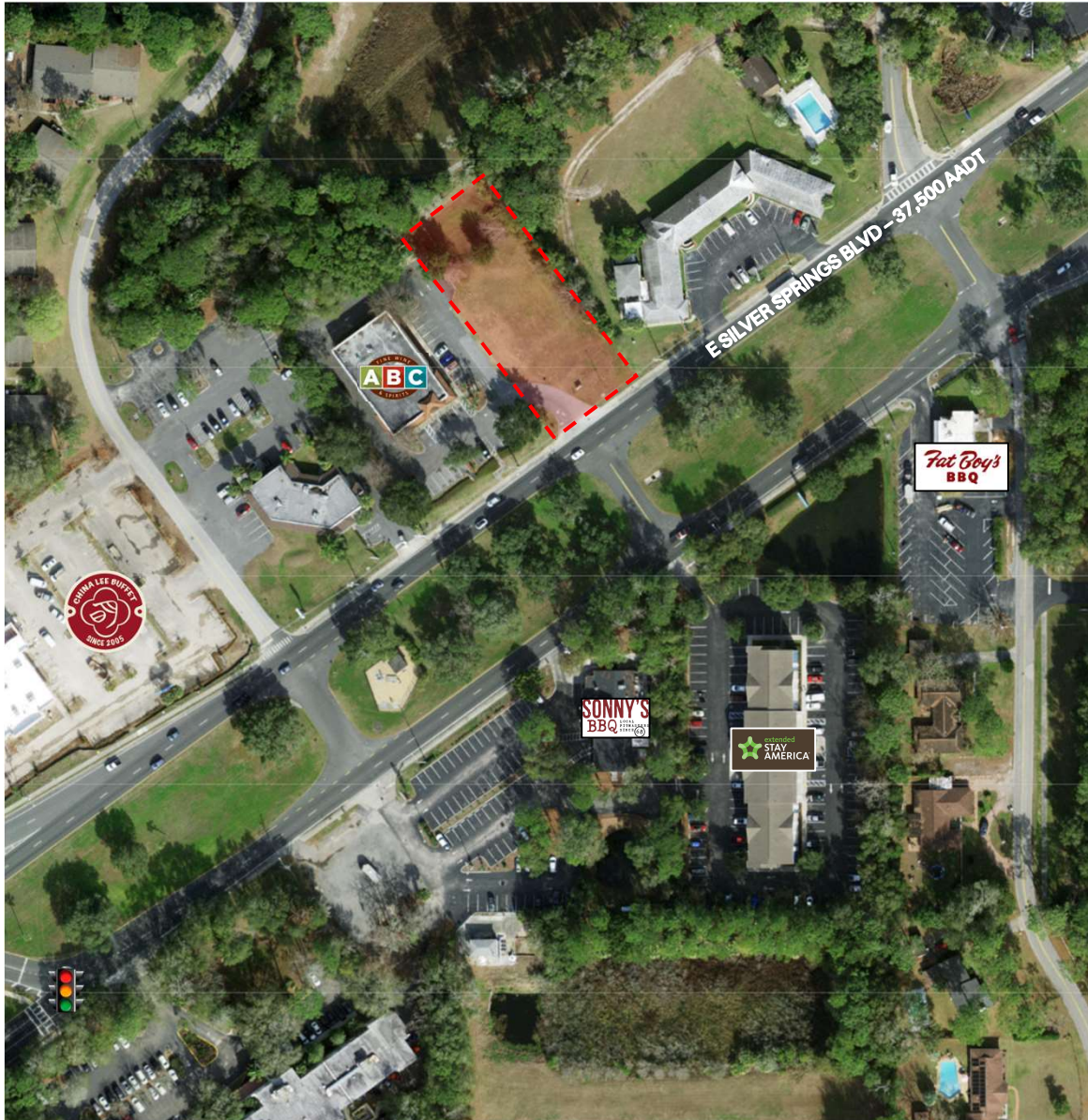


# ±0.62 SF AC LAND PARCEL

4111 E SILVER SPRINGS BLVD, OCALA, FL 34470  
(MARION COUNTY)

# FOR LEASE



## AVAILABLE SPACE

±0.62 AC

## PROPERTY HIGHLIGHTS

- Improved vacant land parcel
- ±0.62 AC sized parcel
- Parcel measures approx. 100' x 270'
- Zoned B2A
- Property is adjacent to ABC Fine Wine & Spirits
- Direct access from E Silver Springs Blvd

## TRAFFIC COUNTS

23,500 AADT on E Silver Springs Blvd

## DEMOGRAPHICS

	1 Mile	3 Mile	5 mile
Population	5,821	41,908	87,759
Households	2,679	17,700	35,677
Avg HH Income	\$71,150	\$74,392	\$79,049

## TENANTS IN IMMEDIATE AREA



851 Broken Sound Parkway NW, Suite 160, Boca Raton, FL 33487 | [www.sracre.com](http://www.sracre.com)

\*The information herein was obtained from third parties. Any and all interested parties should have their choice of experts inspect the property and verify all information. Southeast Retail Advisors, Inc. makes no warranties or guarantees as to the information given to any prospective Buyer or Tenant.

# SOUTHEAST RETAIL ADVISORS

## CONTACT INFO

LINDSEY MEYERS, Principal | Broker

[Lindsey@sracre.com](mailto:Lindsey@sracre.com)

404.556.4960





# BUILDING PHOTOS



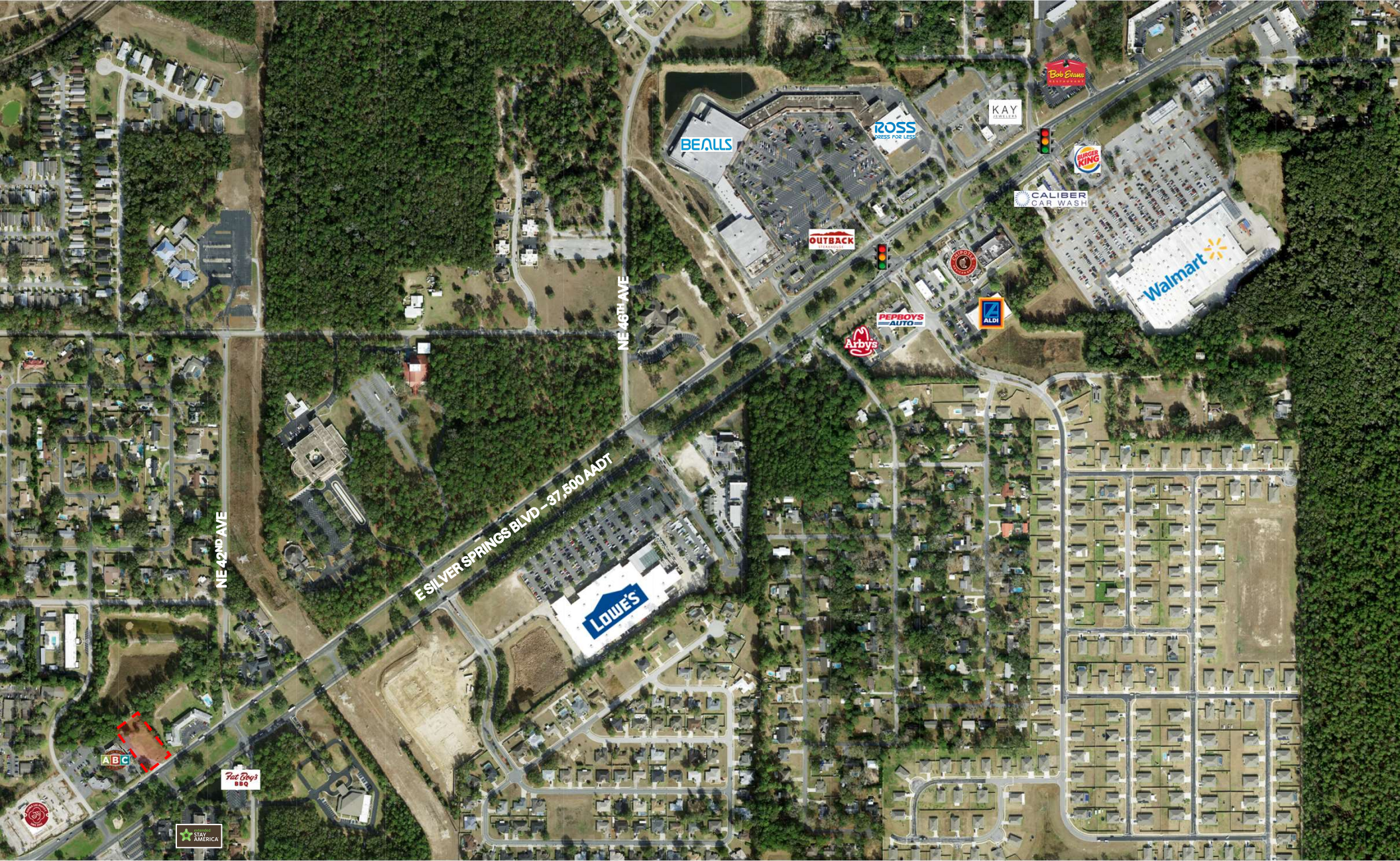
**SOUTHEAST  
RETAIL ADVISORS**

**CONTACT INFO**  
LINDSEY MEYERS, Principal | Broker  
Lindsey@sracre.com  
404.556.4960

851 Broken Sound Parkway NW, Suite 160, Boca Raton, FL 33487 | [www.sracre.com](http://www.sracre.com)  
\*The information herein was obtained from third parties. Any and all interested parties should have their choice of experts inspect the property and verify all information. Southeast Retail Advisors, Inc. makes no warranties or guarantees as to the information given to any prospective Buyer or Tenant.



# AERIAL MAP – EAST OF SITE



**SOUTHEAST  
RETAIL ADVISORS**

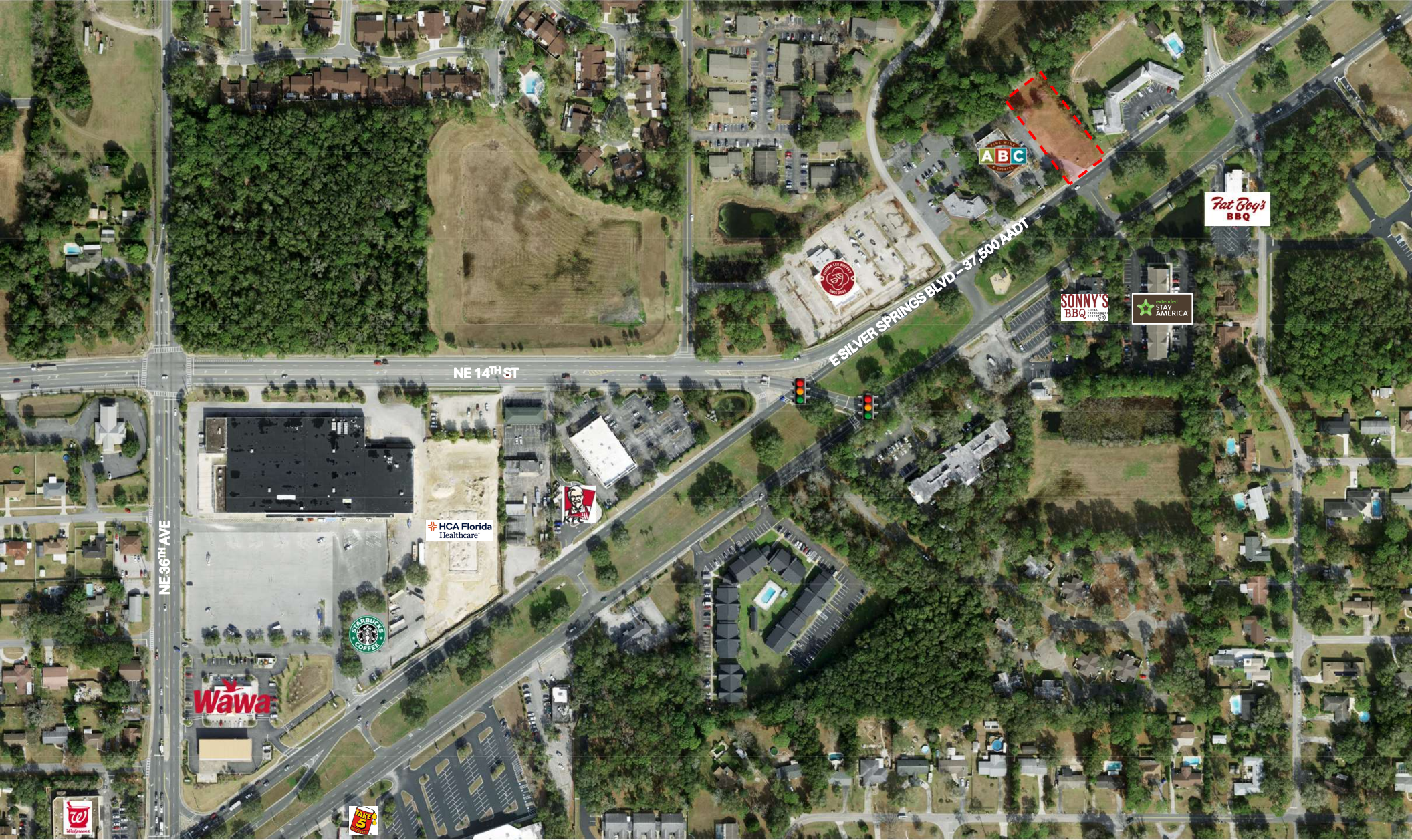
**CONTACT INFO**  
LINDSEY MEYERS, Principal | Broker  
✉ Lindsey@sracre.com  
☎ 404.556.4960

851 Broken Sound Parkway NW, Suite 160, Boca Raton, FL 33487 | [www.sracre.com](http://www.sracre.com)

\*The information herein was obtained from third parties. Any and all interested parties should have their choice of experts inspect the property and verify all information. Southeast Retail Advisors, Inc. makes no warranties or guarantees as to the information given to any prospective Buyer or Tenant.



# AERIAL MAP – WEST OF SITE



**SOUTHEAST  
RETAIL ADVISORS**

**CONTACT INFO**  
LINDSEY MEYERS, Principal | Broker  
✉ Lindsey@sracre.com  
☎ 404.556.4960

851 Broken Sound Parkway NW, Suite 160, Boca Raton, FL 33487 | [www.sracre.com](http://www.sracre.com)

\*The information herein was obtained from third parties. Any and all interested parties should have their choice of experts inspect the property and verify all information. Southeast Retail Advisors, Inc. makes no warranties or guarantees as to the information given to any prospective Buyer or Tenant.