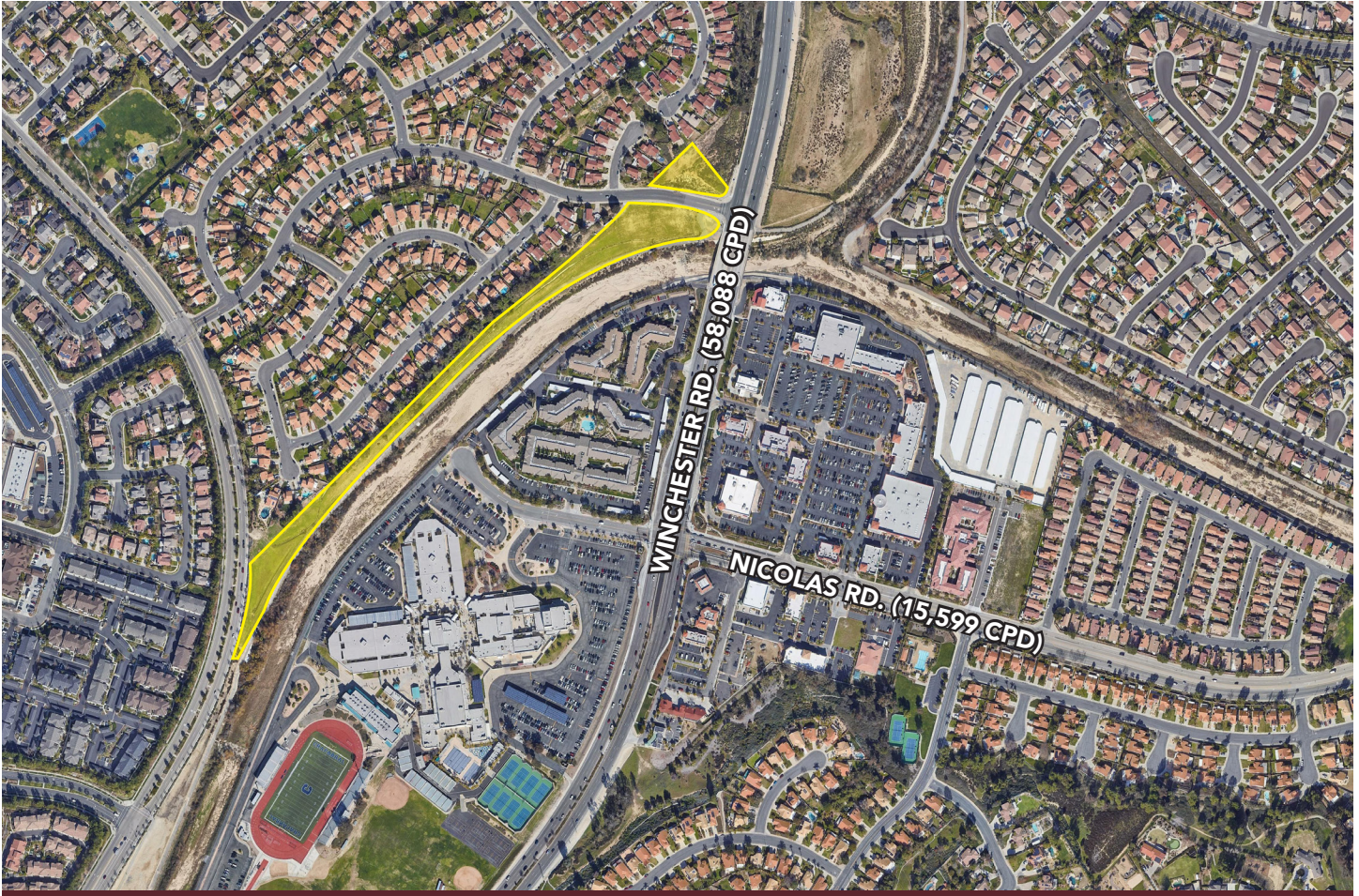


DEVELOPMENT OPPORTUNITY MEDICAL - RELIGIOUS - DAY CARES - GOVERNMENT USES



FEATURES:

- APN #920-090-003
- ±5.36 Gross Acres
- Ideal Central Temecula Location
- Public Institutional Zoning
- Medical and Health Care
- Religious Services
- Day Care
- Government Services

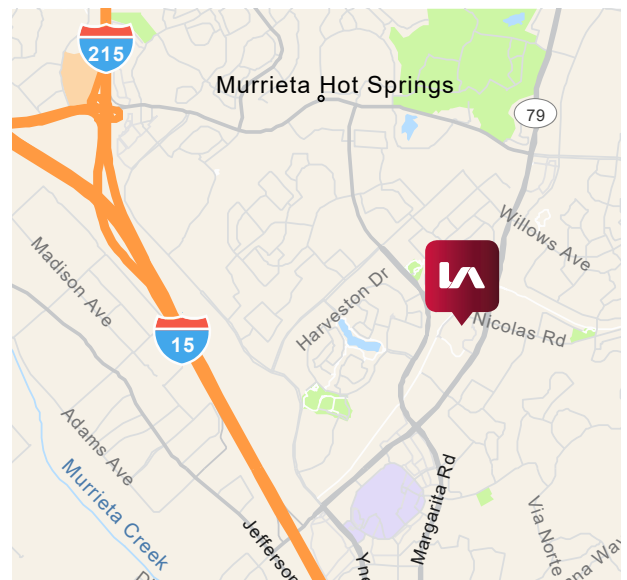
PURCHASE PRICE:
\$1,100,000

Kevin Nellis

760.475.1976

knellis@leetemecula.com

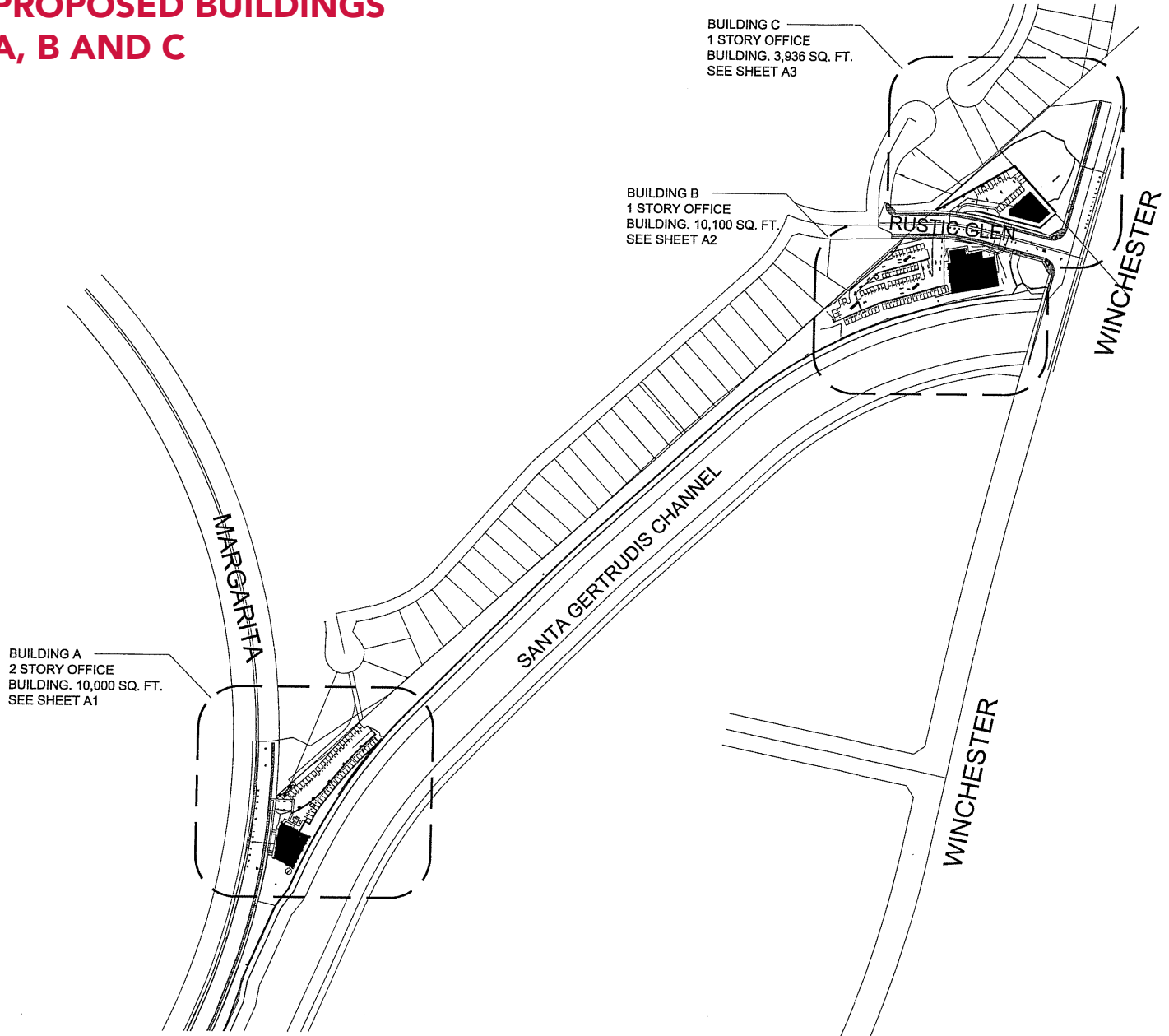
DRE #00965653



No warranty or representation has been made to the accuracy of the foregoing information. Terms of sale or lease and availability are subject to change or withdrawal without notice. Lee & Associates Commercial Real Estate Services, Inc. - Riverside. 25240 Hancock Avenue, Suite 100 - Murrieta, CA 92562
Corporate ID# 01048055

DEVELOPMENT OPPORTUNITY MEDICAL - RELIGIOUS - DAY CARES - GOVERNMENT USES

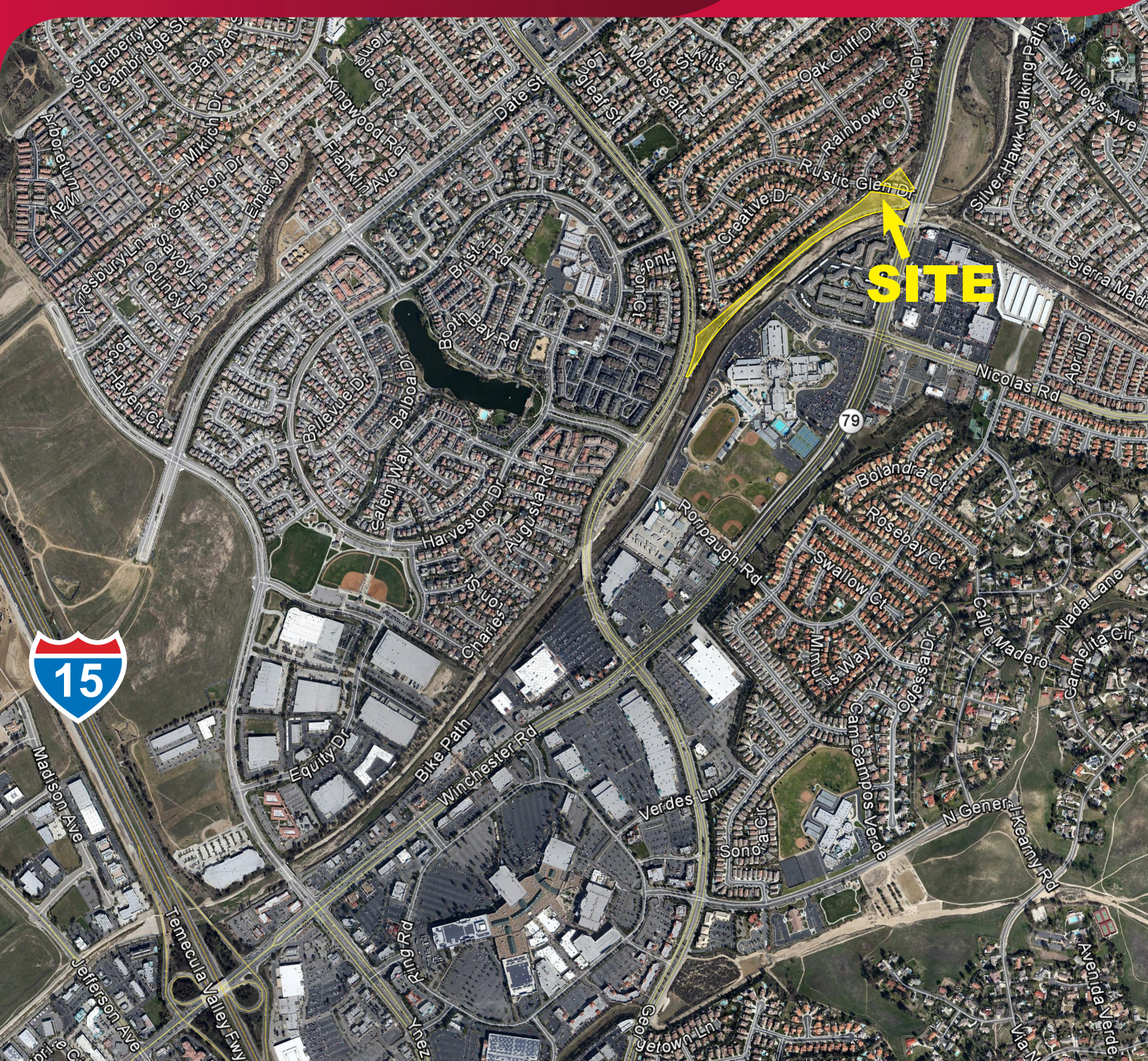
PROPOSED BUILDINGS A, B AND C



Kevin Nellis
760.475.1976
knellis@leetemecula.com
DRE #00965653

No warranty or representation has been made to the accuracy of the foregoing information. Terms of sale or lease and availability are subject to change or withdrawal without notice. Lee & Associates Commercial Real Estate Services, Inc. - Riverside. 25240 Hancock Avenue, Suite 100 - Murrieta, CA 92562
Corporate ID# 01048055

DEVELOPMENT OPPORTUNITY MEDICAL - RELIGIOUS - DAY CARES - GOVERNMENT USES



Kevin Nellis
760.475.1976
knellis@leetemecula.com
DRE #00965653

No warranty or representation has been made to the accuracy of the foregoing information. Terms of sale or lease and availability are subject to change or withdrawal without notice. Lee & Associates Commercial Real Estate Services, Inc. - Riverside. 25240 Hancock Avenue, Suite 100 - Murrieta, CA 92562 Corporate ID# 01048055