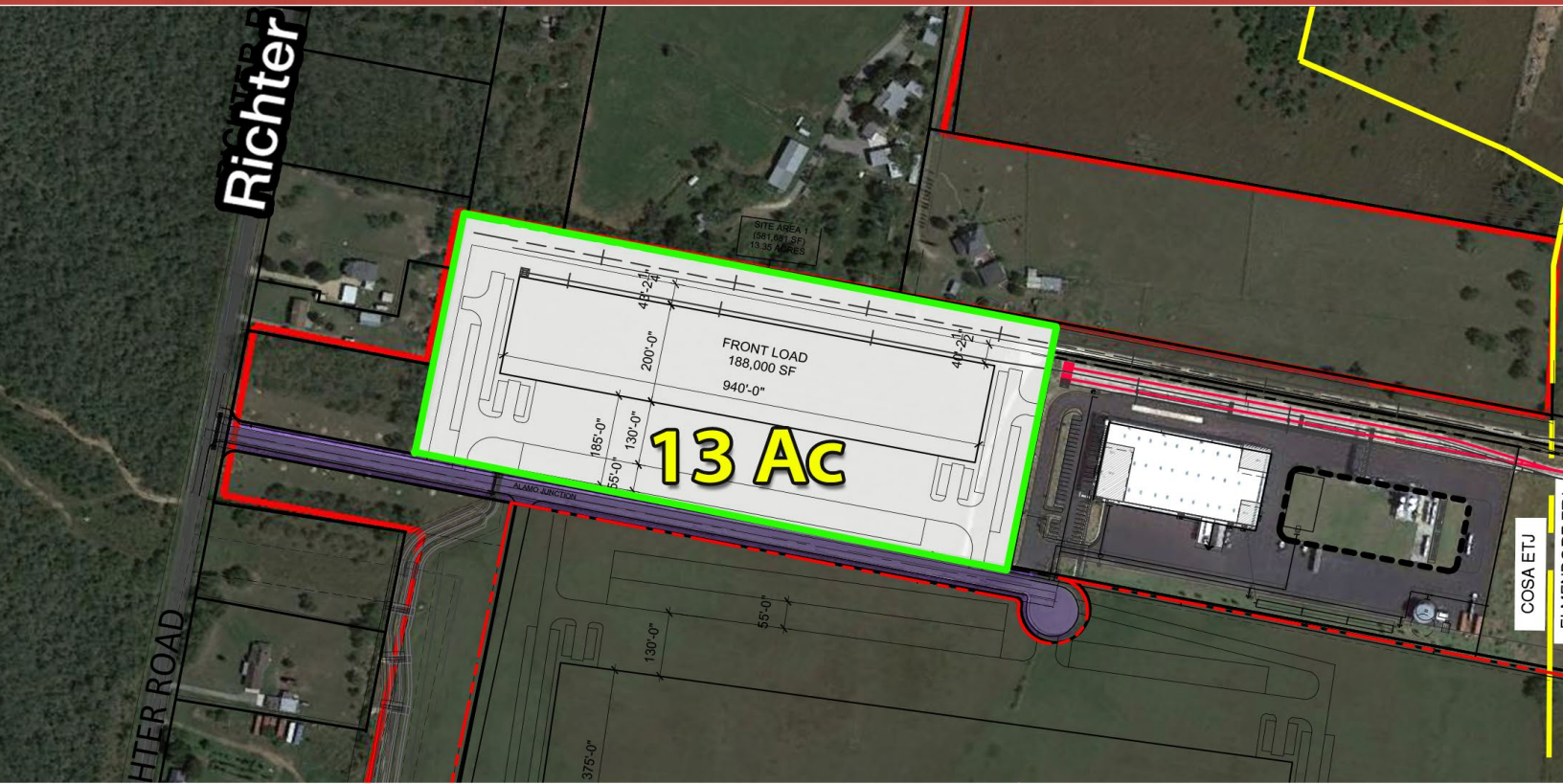


FOR LEASE, BUILD-TO-SUIT OR DESIGN-BUILD



Part of a 520 Acre Master-Planned Rail-Served Industrial Park

Property Details

- 13 Acres
- 1,100' of frontage on Alamo Junction Parkway
- Electricity and Water Available, Septic Required
- Regional Detention
- San Antonio ETJ

Development Info

- Dual Rail Service Offering Competitive Pricing (UP & BNSF)
- State-of-the-Art Rail Terminal & Transload Facility
- Over 15 miles of Internal Track Developed to Date
- Easy Access to Park via IH-37, Loop 1604 & Highway 181



16456 Old Corpus Christi Rd
Elmendorf, TX 78112

Developer:



Rail Operator:



Real Estate Broker:



For Information:
John Greg Turcotte
210.710.8966
jg@turcotteres.com

