

# 30 Lindeman Drive, Trumbull

Flex Building for Sublease



## Availability:

RBA: 2,309 RSF

Lease Rate: Upon Request

Lease Term: Through March 14, 2022

Parking: 2.5/1,000

## Property Highlights:

- Located with immediate access to Rt. 15. Close to Rt. 8 and Rt. 25
- New build-out includes warehouse, receiving area with double doors, 4 windowed offices and kitchen
- 100% A/C and 10' ceilings in warehouse
- Signage

For more information, please contact:

**Eva Kornreich** | Associate  
Avison Young- New York, LLC  
203.658.6603  
eva.kornreich@avisonyoung.com

**Sean Cahill** | Principal & Managing Director  
Avison Young- New York, LLC  
203.614.1264  
sean.cahill@avisonyoung.com

383 Main Avenue, 6th Floor | Norwalk, CT 06851  
T 203.614.1260 | [www.avisonyoung.com](http://www.avisonyoung.com)

©2018 The information contained herein was obtained from sources deemed reliable and is believed to be true; it has not been verified and as such, cannot be warranted nor form any part of any future contract.



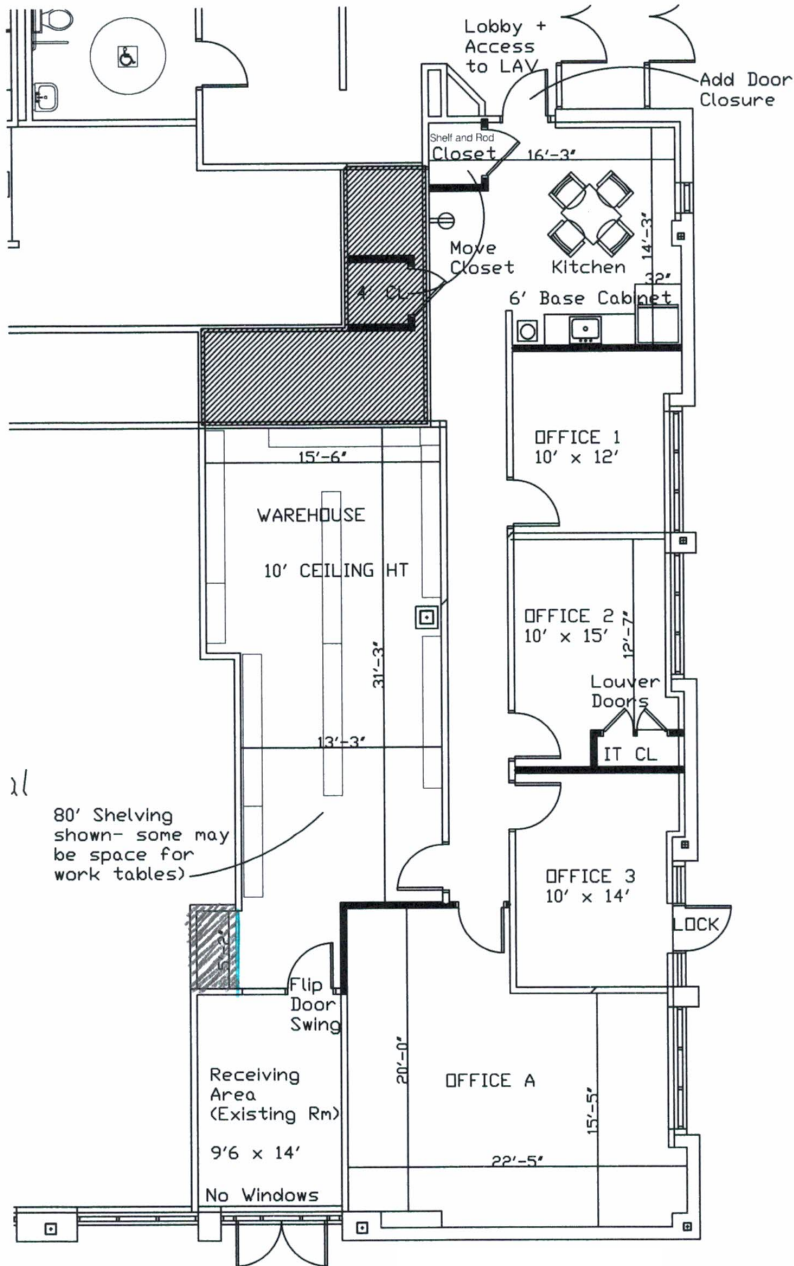
**CANADA'S BEST  
MANAGED  
COMPANIES**  
Platinum member

# 30 Lindeman Drive, Trumbull

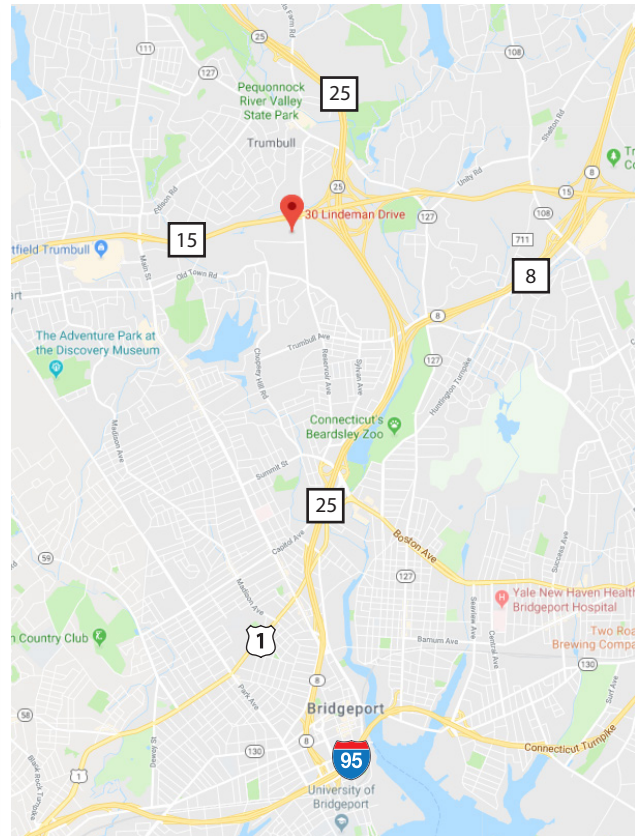
Flex Building for Sublease



## Floor Plan:



## Aerial Map:



For more information, please contact:

**Eva Kornreich** | Associate  
Avison Young- New York, LLC  
203.658.6603  
eva.kornreich@avisonyoung.com

**Sean Cahill** | Principal & Managing Director  
Avison Young- New York, LLC  
203.614.1264  
sean.cahill@avisonyoung.com

383 Main Avenue, 6th Floor | Norwalk, CT 06851  
T 203.614.1260 | www.avisonyoung.com

©2018 The information contained herein was obtained from sources deemed reliable and is believed to be true; it has not been verified and as such, cannot be warranted nor form any part of any future contract.

