

IOI NORTH MAIN

GREENVILLE, SC 29601



Up to 36,613 SF AVAILABLE
Class A Downtown Office Space

[View online](#)

realop
INVESTMENTS

CBRE



±1,788 - ±36,613 SF AVAILABLE

- Renovations underway with additional improvements planned
- Located on ONE City Plaza
- ±195,907 SF Total Building | 16 Floors
- Amenities:
 - Fitness Center (subject to additional fees), equipped with locker rooms and showers
 - Direct access to parking garages from third floor
- On-site coffee shop
- Parking available in adjacent city garages
- One of the first buildings in SC to receive a WIRED Certification
- Lease Rates:
 - \$31.50/RSF Full Service
 - Suite 202 / \$32.50/RSF Full Service
 - Ground Floor / Contact Broker



▶ Take a Tour of the Newly Renovated Lobby



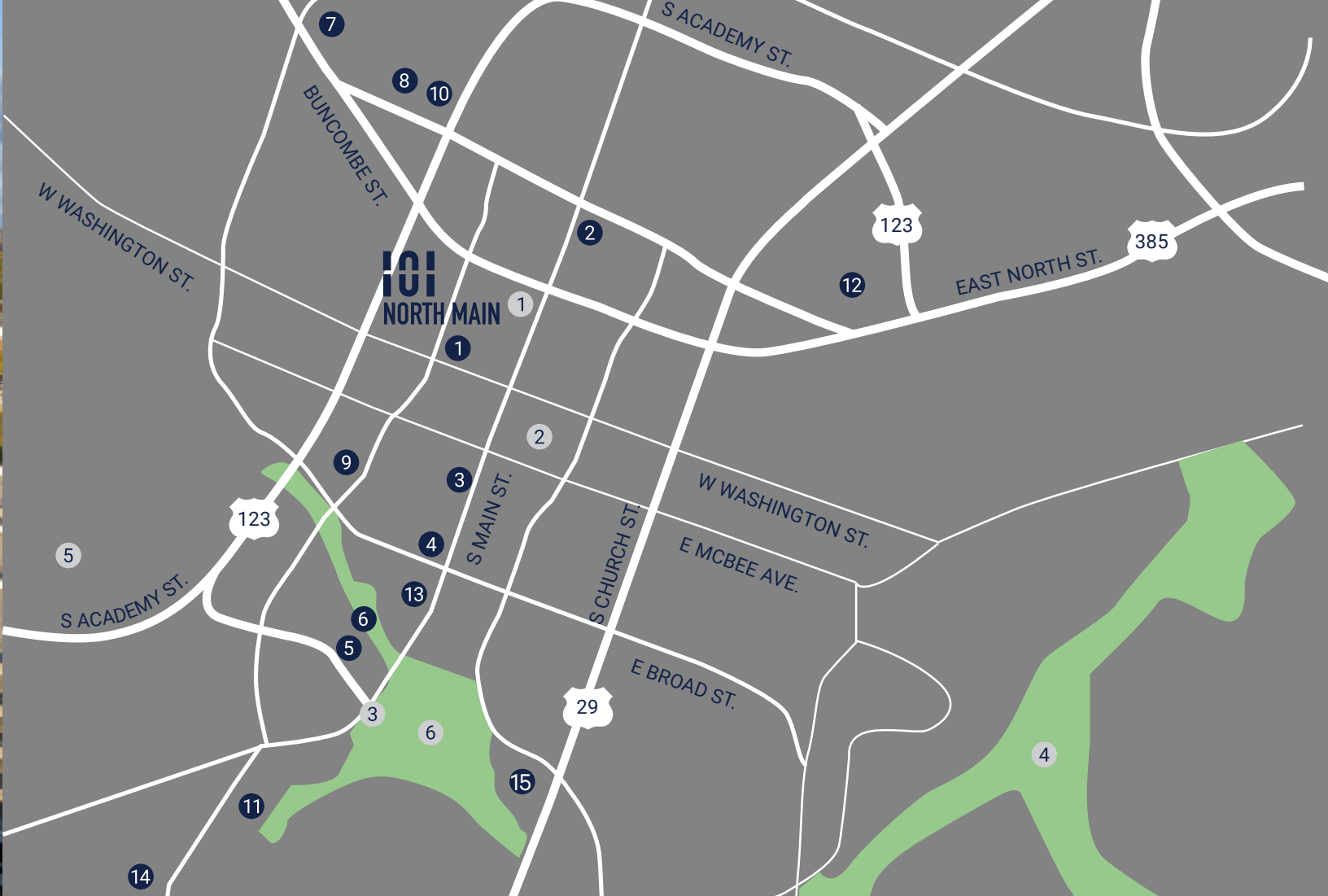


CLASS A DOWNTOWN OFFICE SPACE

Located in the heart of Greenville, SC
 100+ retailers, more than 500,000 sq ft

DINING





Greenville's award-winning downtown, 101 N Main is pedestrian friendly to over 120 restaurants, luxury hotels and many downtown attractions such as Falls Park and the Swamp Rabbit Trail.

EVENT VENUES & ACCOMMODATIONS

- 1 Aloft Hotel
- 2 Hyatt Regency
- 3 Westin Poinsett
- 4 Courtyard Marriott
- 5 Hampton Inn
- 6 Embassy Suites
- 7 Upcountry Museum
- 8 Greenville County Museum of Art
- 9 Center Stage
- 10 Greenville Little Theatre
- 11 Warehouse Theatre
- 12 Bon Secours Wellness Arena
- 13 Peace Center for the Performing Arts
- 14 Fluor Field
- 15 Grand Bohemian Lodge

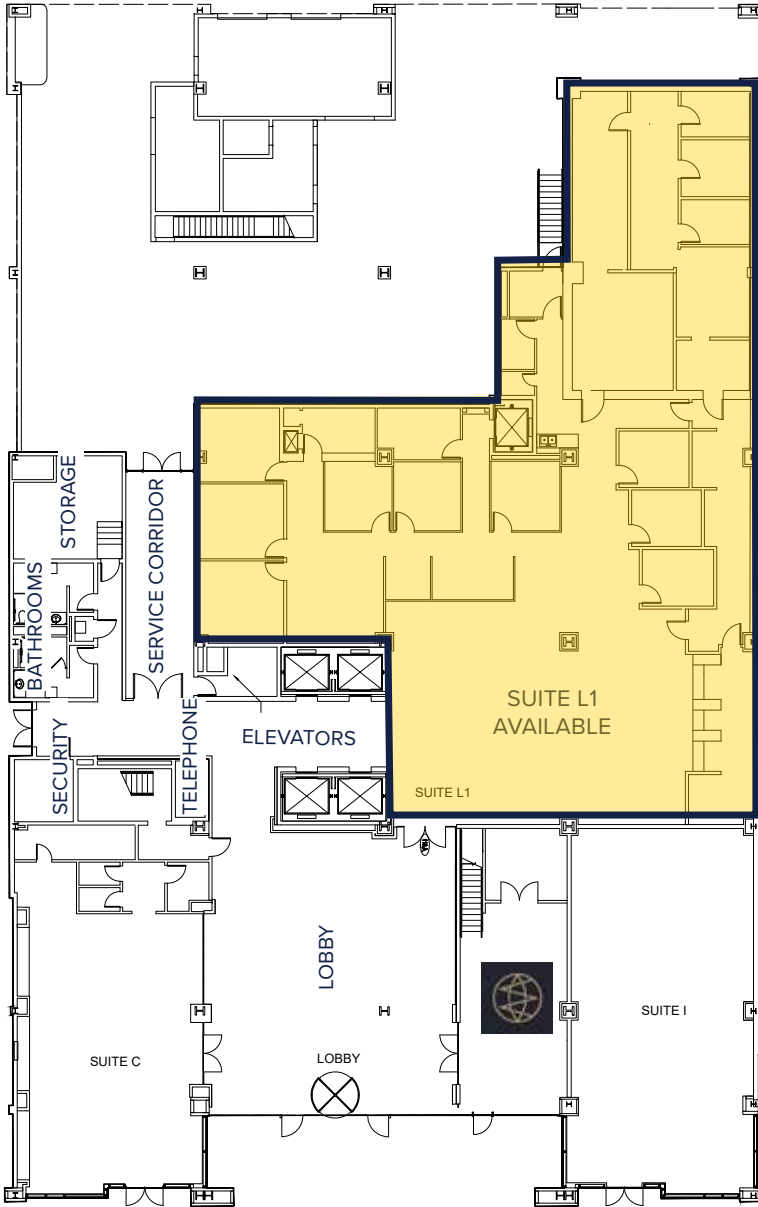
HEALTH & WELLNESS

- 1 Carolina Fitness
- 2 Anytime Fitness
- 3 Falls Park on the Reedy River
- 4 Cleveland Park
- 5 Kroc Center
- 6 Swamp Rabbit Trail

FLOOR PLANS

GROUND FLOOR ±7,865 SF AVAILABLE

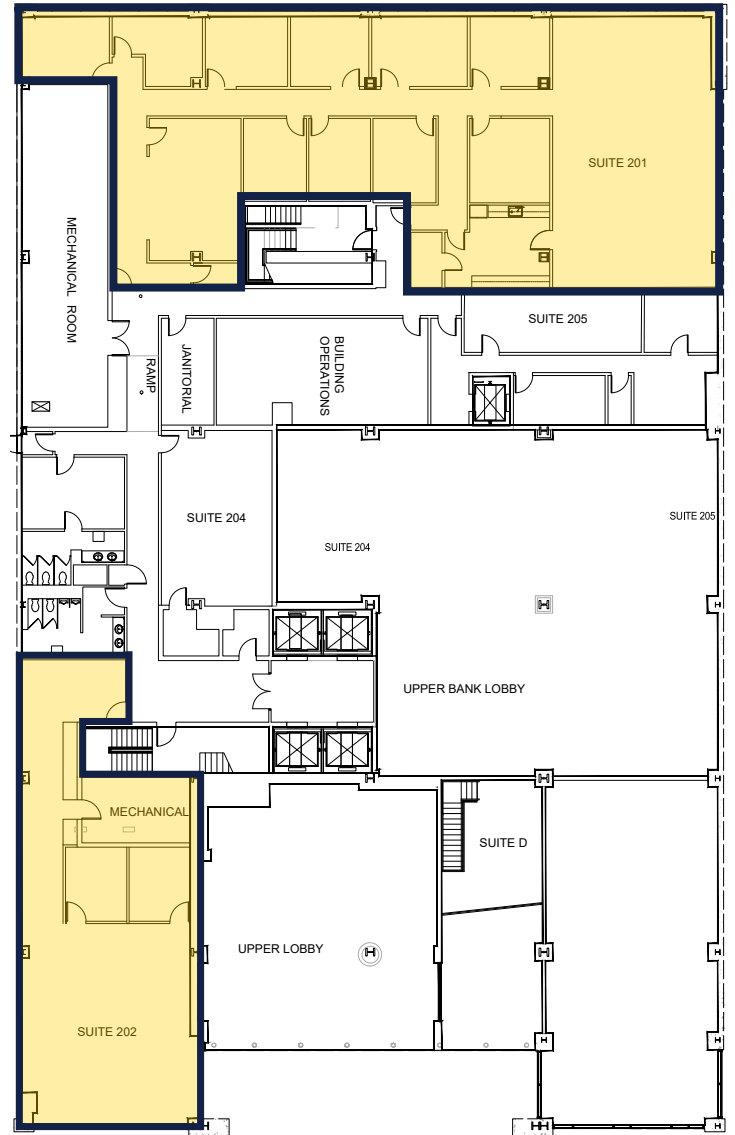
Suite L1 | ±7,865 RSF



2ND FLOOR ±7,781 SF AVAILABLE

Suite 201 | ±5,350 RSF

Suite 202 | ±2,431 RSF

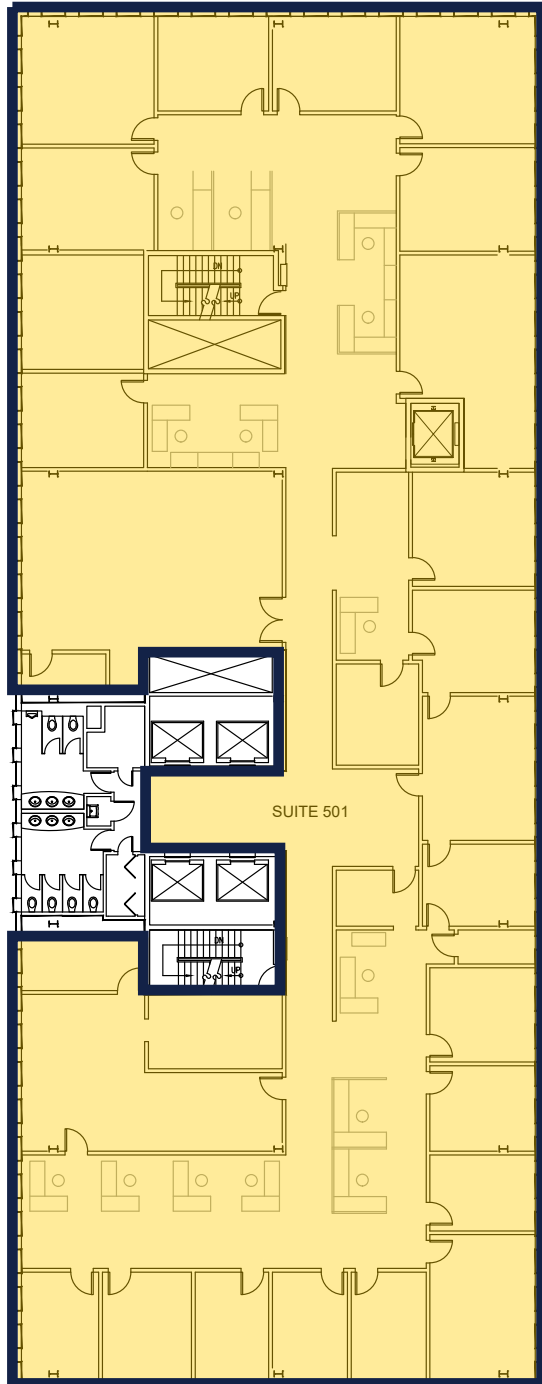


 Available

±1,788 - ±36,613 SF AVAILABLE FOR LEASE

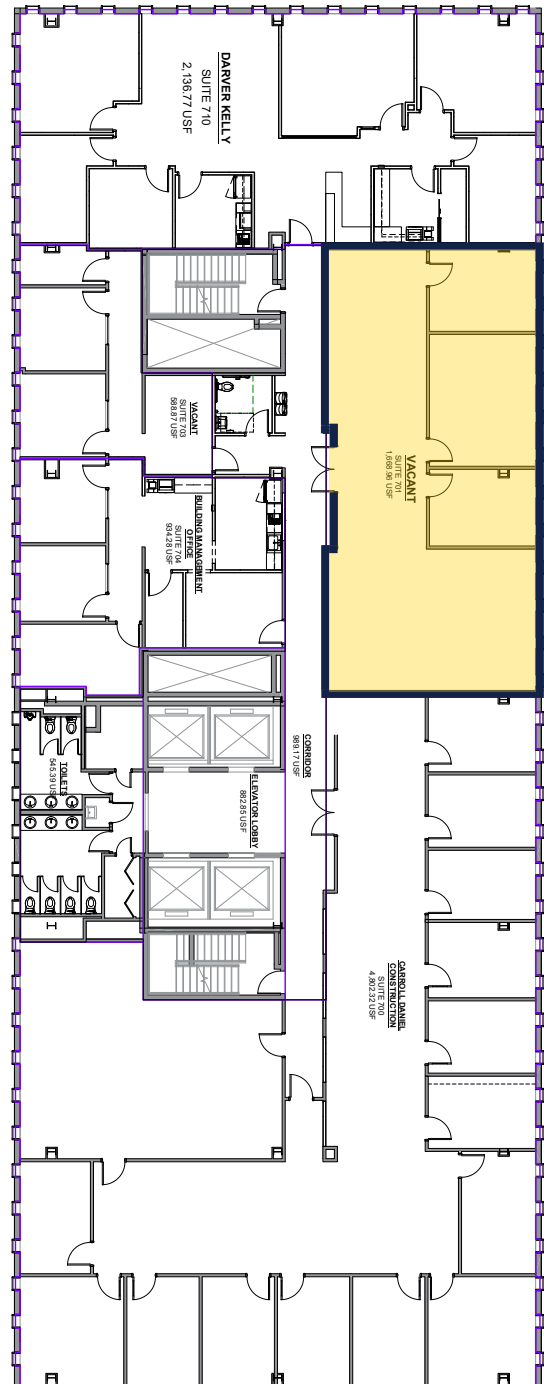
5TH FLOOR ±12,856 SF AVAILABLE

Suite 501 | ±12,856 RSF



7TH FLOOR ±2,115 SF AVAILABLE

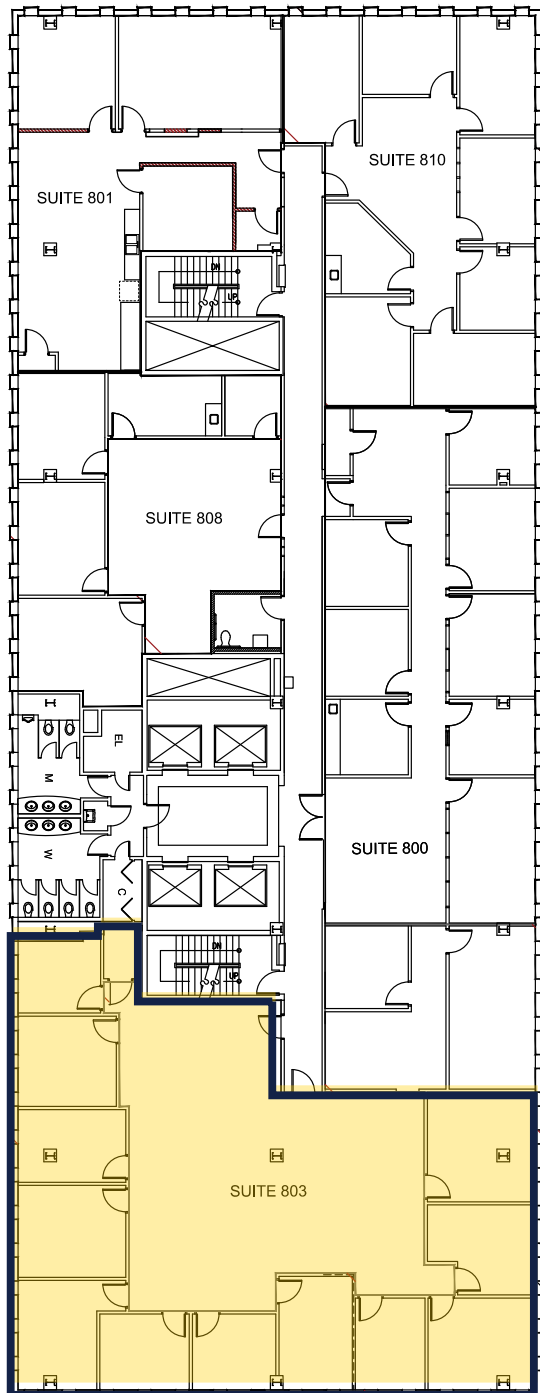
Suite 701 | ± 2,115 RSF



FLOOR PLANS

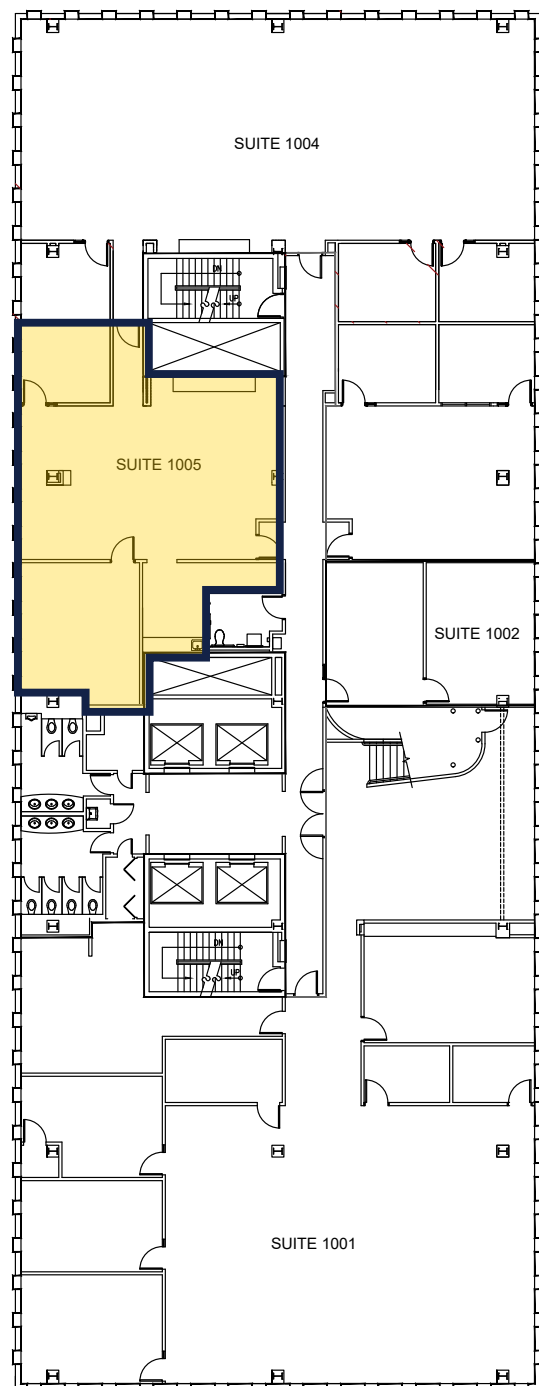
8TH FLOOR
±4,208 SF AVAILABLE

Suite 803 | ±4,208 RSF



10TH FLOOR
±1,788 SF AVAILABLE

Suite 1005 | ±1,788 RSF





IOI NORTH MAIN



FOR LEASING INQUIRIES:

CHARLES GOUCH, CCIM, SIOR

Senior Vice President

+1 864 527 6035

charles.gouch@cbre.com

BLAINE HART, SIOR

Senior Vice President

+1 864 527 6054

blaine.hart@cbre.com

SHELBY DODSON, LEED AP

First Vice President

+1 864 527 6022

shelby.dodson@cbre.com

© 2024 CBRE, Inc. All rights reserved. This information has been obtained from sources believed reliable, but has not been verified for accuracy or completeness. Any projections, opinions, or estimates are subject to uncertainty. The information may not represent the current or future performance of the property. You and your advisors should conduct a careful, independent investigation of the property and verify all information. Any reliance on this information is solely at your own risk. CBRE and the CBRE logo are service marks of CBRE, Inc. and/or its affiliated or related companies in the United States and other countries. All other marks displayed on this document are the property of their respective owners. Photos herein are the property of their respective owners and use of these images without the express written consent of the owner is prohibited.



CBRE