

COMMERCIAL SPACE FOR LEASE

10803-10807 Riverside Dr | Toluca Lake

SHORT TERM LEASE POSSIBLE



For more information please contact:

Stacy Vierheilg-Fraser
818.933.0313
svierheilg@lee-re.com
DRE#00986794



Lee & Associates® - LA North/Ventura, Inc. • Corp ID #01191898
A Member of the Lee & Associates® Group of Companies
15250 Ventura Blvd., Suite 100 • Sherman Oaks, CA 91403
P:818.986.9800 F:818.933.0405 • www.lee-associates.com

No warranty or representation is made to the accuracy of the foregoing information. Terms of sale or lease and availability are subject to change or withdrawal without notice.

AVAILABLE

UNIT	SIZE	RATE	Notes
A	±1,500 SF	\$3.10 NNN (Approx. \$.70)	-
D	±3,100 SF	\$2.60 NNN (Approx. \$.70)	Loading Doors

PARKING

3 Spaces

PROPERTY HIGHLIGHTS

- High Ceilings
- Excellent Glass Line
- Great Freeway Accessibility

ABOUT LEE & ASSOCIATES

Lee & Associates offers an array of real estate services tailored to meet the needs of the company's clients, including commercial real estate brokerage, integrated services, and construction services. Established in 1979, Lee & Associates is now an international firm with 70+ offices throughout the United States and Canada. Our 1,300 professionals regularly collaborate to make sure they are providing their clients with the most advanced, up-to-date market technology and information. For the latest news from Lee & Associates, visit lee-associates.com or follow us on Facebook, LinkedIn, Twitter, and Link, our company blog.

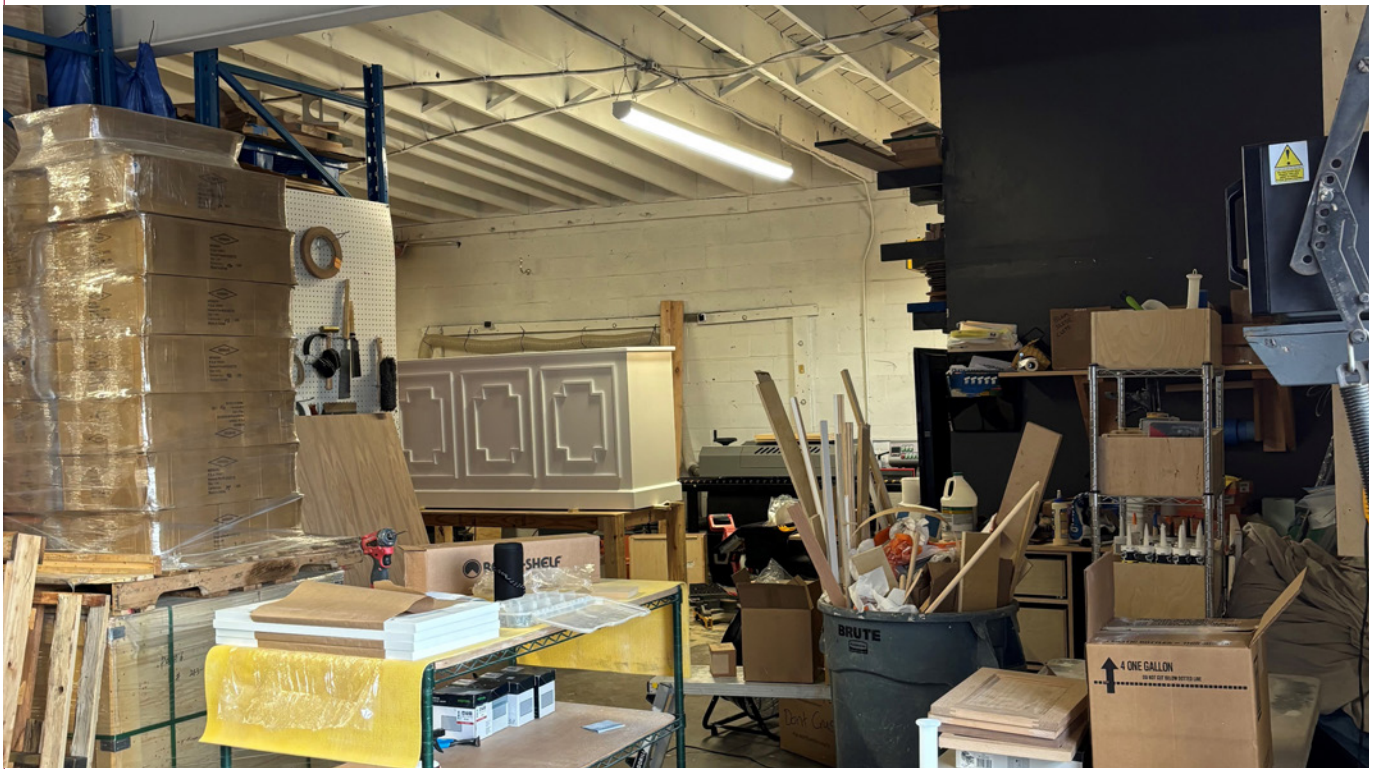
COMMERCIAL SPACE FOR LEASE

10803-10807 Riverside Dr | Toluca Lake



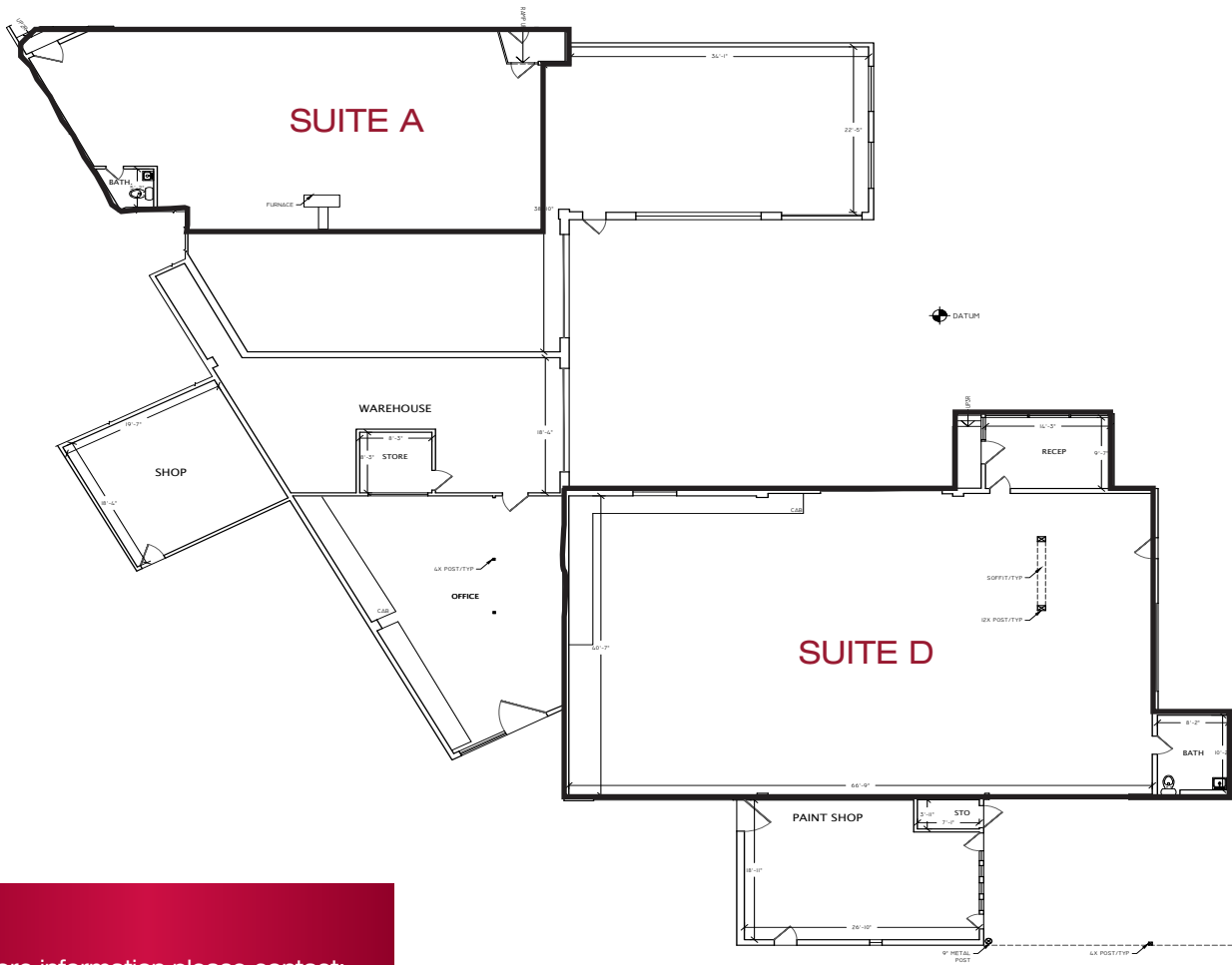
COMMERCIAL SPACE FOR LEASE

10803-10807 Riverside Dr | Toluca Lake



COMMERCIAL SPACE FOR LEASE

10803-10807 Riverside Dr | Toluca Lake



For more information please contact:

Stacy Vierheilg-Fraser

818.933.0313

svierheilg@lee-re.com

DRE#00986794



COMMERCIAL REAL ESTATE SERVICES

Lee & Associates® - LA North/Ventura, Inc. • Corp ID #01191898

A Member of the Lee & Associates® Group of Companies

15250 Ventura Blvd., Suite 100 • Sherman Oaks, CA 91403

P:818.986.9800 F:818.933.0405 • www.lee-associates.com

No warranty or representation is made to the accuracy of the foregoing information. Terms of sale or lease and availability are subject to change or withdrawal without notice.