

630 SOUTH RANCHO DRIVE, SUITE C-E



630 South Rancho Dr

**FOR LEASE**

**CBRE**

**TONYA GOTTESMAN**  
Vice President  
+1 702 369 4882  
[tonya.gottesman@cbre.com](mailto:tonya.gottesman@cbre.com)  
Lic. S.189043

**RYAN MARTIN, CCIM, SIOR**  
Senior Vice President  
+1 702 369 4881  
[ryan.martin@cbre.com](mailto:ryan.martin@cbre.com)  
Lic. BS.0048284

L A S V E G A S , N V



# PROPERTY HIGHLIGHTS



**±10,145 SF AVAILABLE**  
DIVISIBLE BY ±2,000 SF



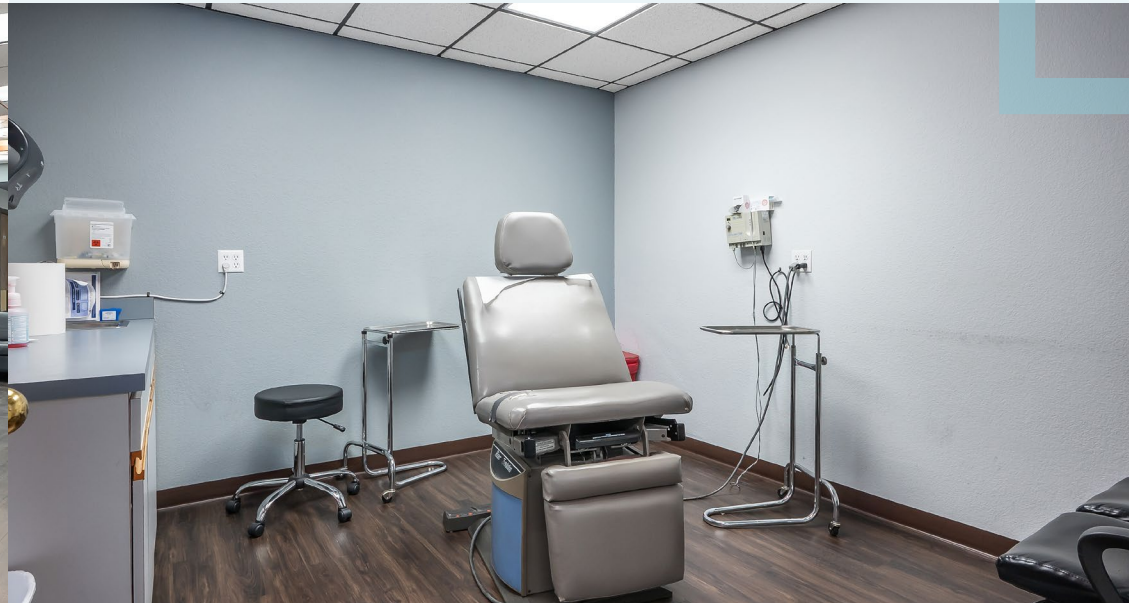
**LEASE RATE:**  
**\$2.00 NNN**



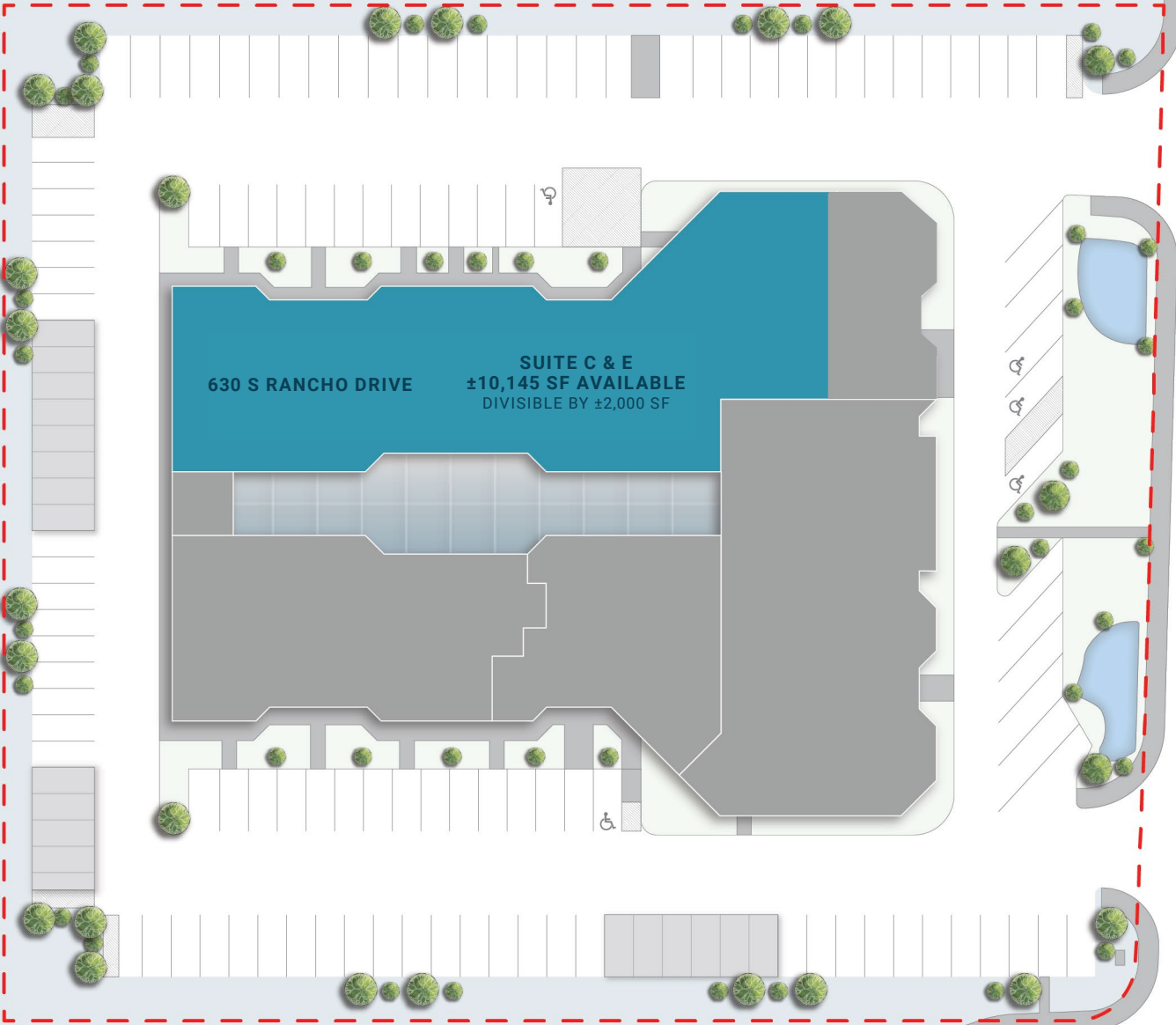
**CAMS:**  
**\$0.43**

630 S Rancho Drive, Suite C-E, Las Vegas, NV 89106 offers a prime location within minutes of the Las Vegas Medical District, UMC Trauma Center, Valley Hospital, and major freeways including US-95 and I-15. This medical office space is part of a well-maintained, single-story Class B building featuring a decorative brick exterior, 24-hour access, and offers 8 covered parking spaces.

Suite C-E has flexible layout options to accommodate a variety of medical tenant needs. Exterior signage opportunities and proximity to downtown Las Vegas make this an exceptional choice for businesses seeking visibility and convenience.



S I T E   P L A N



S RANCHO DR

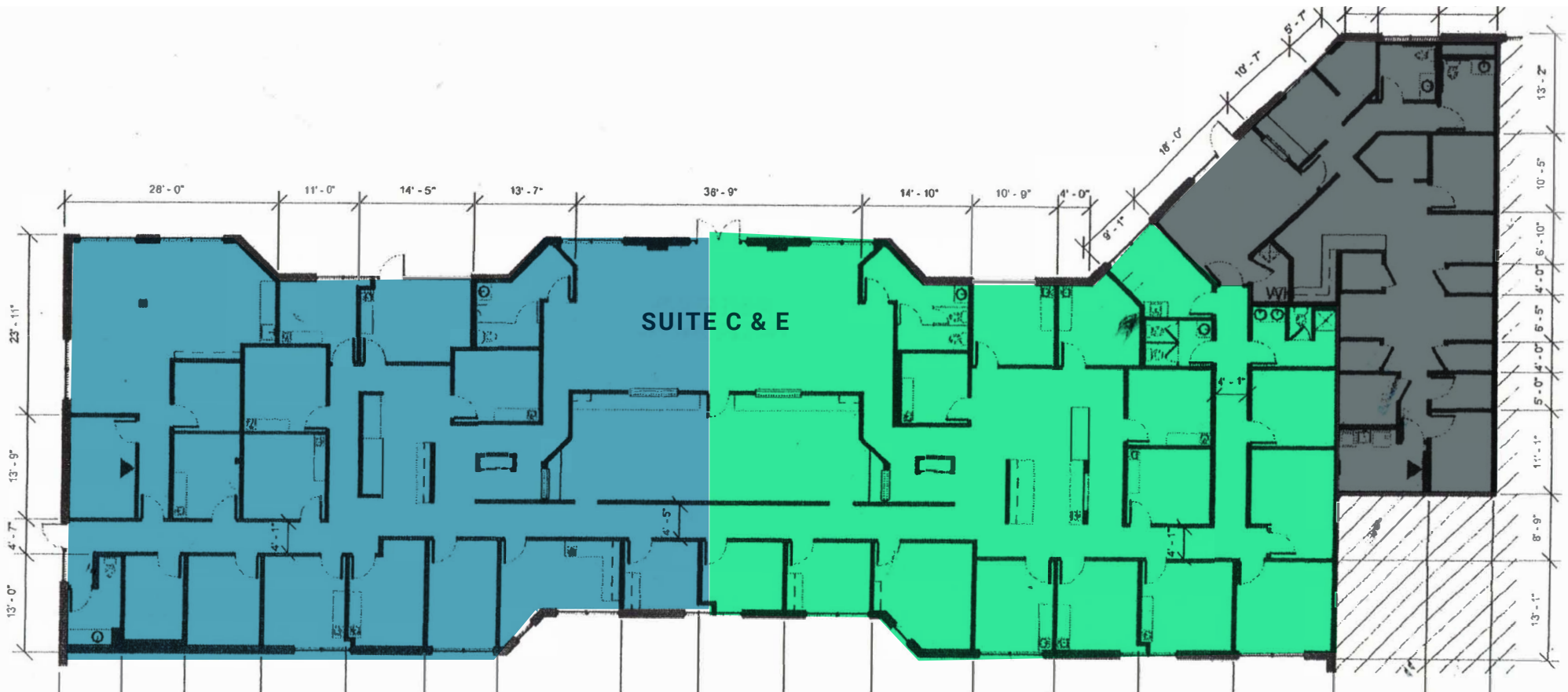
PALOMINO LN







PROPOSED DIVISIBILITY



FLOOR PLAN





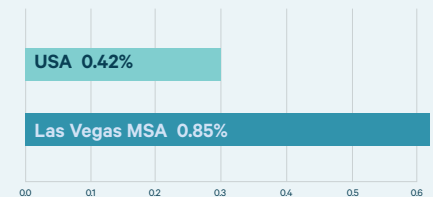


## WHY LAS VEGAS

Las Vegas, NV is a vibrant and bustling city known for a tourism, entertainment, strong economy and highly-skilled workforce. Las Vegas attracts millions of tourists each year and is home to iconic landmarks such as the Las Vegas Strip, where visitors can enjoy luxurious resorts, extravagant shows, and endless dining and shopping options. Las Vegas also offers a variety of other recreation options, including hiking in nearby Red Rock Canyon, exploring the Hoover Dam, catching a major league game and taking scenic helicopter tours of the Grand Canyon. Las Vegas is a thriving community with both urban and rural locals.

**LAS VEGAS MSA POPULATION**  
**2,418,659**

**% ANNUAL POPULATION GROWTH (2025 - 2030)**



## MEDIAN AGE

Nevada 38.9 years  
U.S. 39.1 years

## SMART & DIVERSE WORKFORCE

Las Vegas has a diverse, educated and highly-skilled workforce and has experienced an influx in in-migration, as individuals seek a market that offers low cost of living and direct access to recreation, entertainment and culture.



Source: U.S. Bureau of Labor Statistics

## EDUCATION ATTAINMENT

Associates Degree	9.4%
Bachelor's Degree	19.9%

Source: CBRE Research, 2025

## CONSISTENT LEVELS OF POPULATION GROWTH

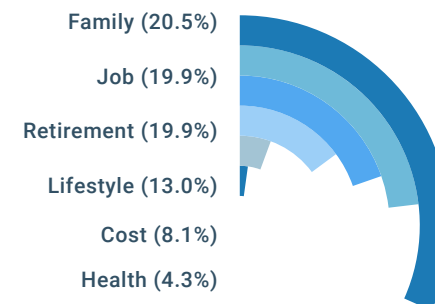


**2024: 1.6% Increase**

**5-year Forecast: 9.8% Increase**

Source: Oxford Economics

## CLARK COUNTY POPULATION 2025 PRIMARY REASONS FOR MOVING TO NEVADA











# 630

South Rancho Dr



## C O N T A C T S



### TONYA GOTTESMAN

Vice President

+1 702 369 4882

[tonya.gottesman@cbre.com](mailto:tonya.gottesman@cbre.com)

Lic. S.189043

### RYAN MARTIN, CCIM, SIOR

Senior Vice President

+1 702 369 4881

[ryan.martin@cbre.com](mailto:ryan.martin@cbre.com)

Lic. BS.0048284

© 2026 CBRE, Inc. All rights reserved. This information has been obtained from sources believed reliable but has not been verified for accuracy or completeness. You should conduct a careful, independent investigation of the property and verify all information. Any reliance on this information is solely at your own risk. CBRE and the CBRE logo are service marks of CBRE, Inc. All other marks displayed on this document are the property of their respective owners, and the use of such logos does not imply any affiliation with or endorsement of CBRE. Photos herein are the property of their respective owners. Use of these images without the express written consent of the owner is prohibited. CPM 630 S Rancho\_Brochure\_V5 01/12/26

