

## Building Highlights

- 8,000 sf available for lease
- 14' clear height
- 5 car park spaces
- One (1) exterior dock; one (1) drive-in door
- 400 amps power
- Lease rate: \$10.00/sf gross



Central location



Ample labor



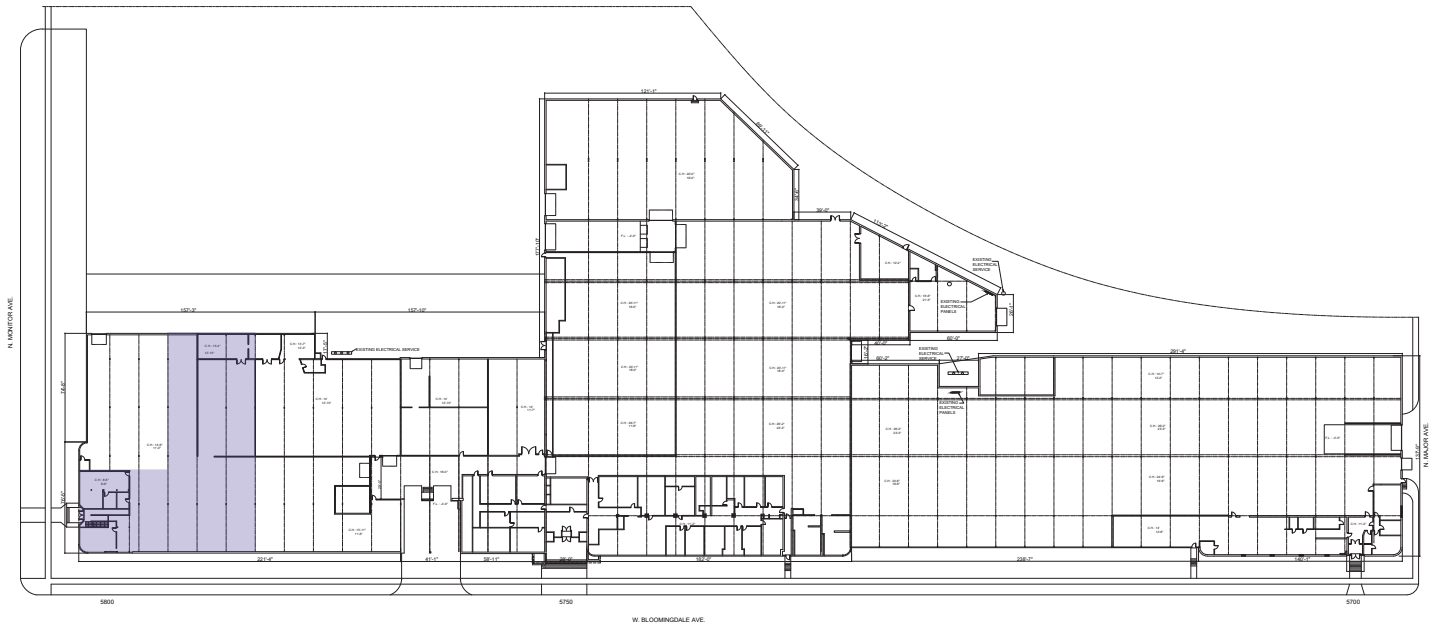
Rare availability

## For more information

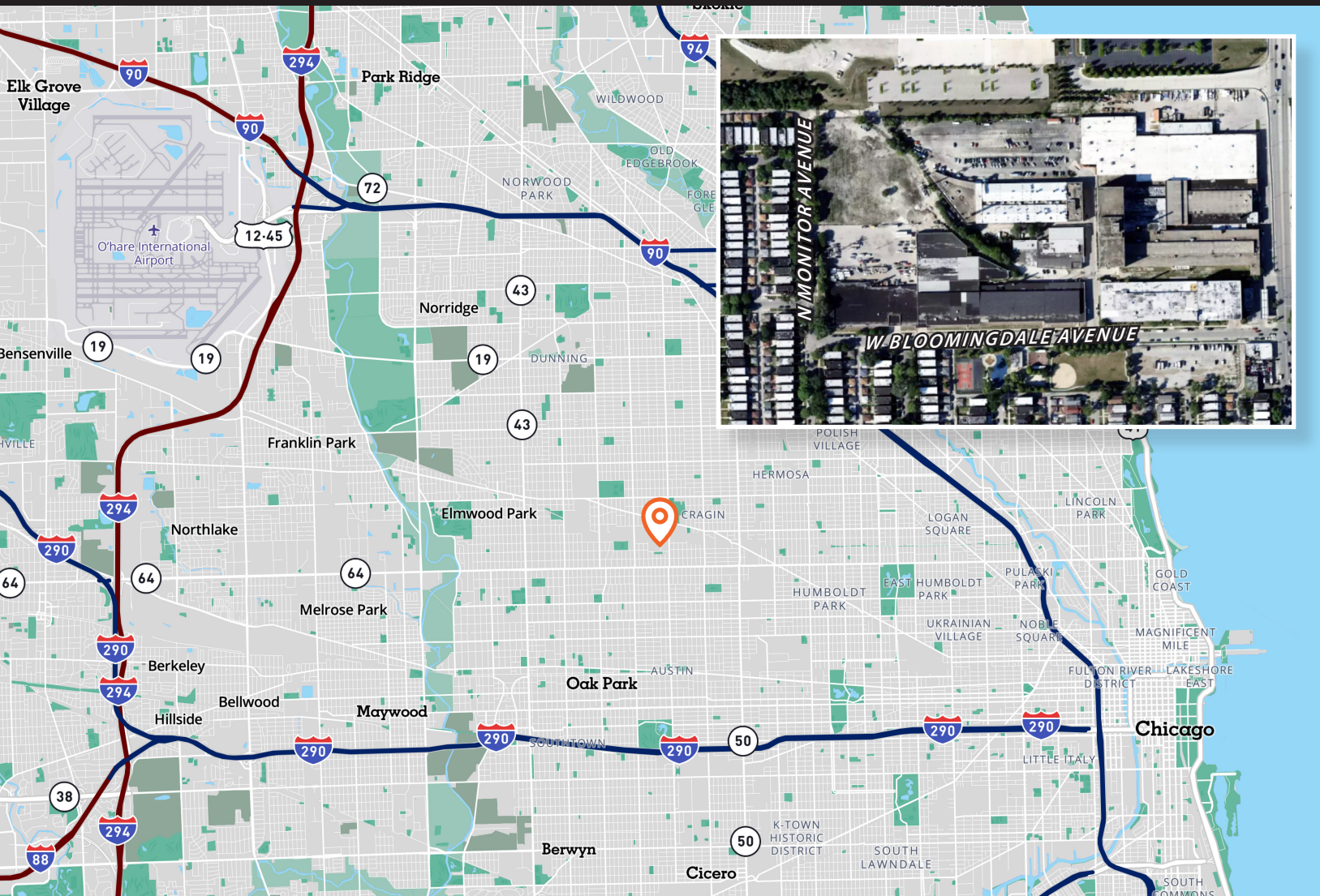
**Steven A. Kohn, SIOR**  
Principal  
[steven.kohn@avisonyoung.com](mailto:steven.kohn@avisonyoung.com)  
D +1 847 849 1912  
M +1 847 341 6048

8,000 sf

**Available for Lease**  
1815 N. Monitor Avenue  
Chicago, IL 60639







For more information, please contact:

Steven A. Kohn, SIOR  
Principal  
steven.kohn@avisonyoung.com  
D: +1 847 849 1912  
M: +1 847 341 6048

---

avisonyoung.com

---

© 2025 Avison Young - Chicago, LLC.  
Information contained herein was obtained from sources deemed reliable and, while thought to be correct, have not been verified. Avison Young does not guarantee the accuracy or completeness of the information presented, nor assumes any responsibility or liability for any errors or omissions therein.