



1185

Stellar Drive
Newmarket

8-Bay Car Wash with Industrial Development Potential

FOR SALE

Greg Clark**
Executive Vice President

Daniel Bahrami
Sales Representative

Madison Scott
Sales Representative



Property Details

Property Address

1185 Stellar Drive, Newmarket

Site Area

1.00 Acres

Building Size

4,837 SF

Clear Height

12'

Number of Car Wash Bays

8 Bays

Zoning

EG Zoned

Asking Price

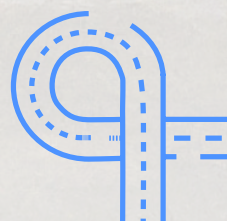
\$3,599,999



Close to restaurants and other amenities



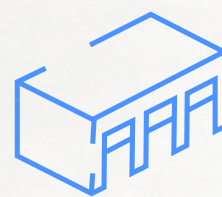
Close proximity to residential and commercial developments



Easy access to Highway



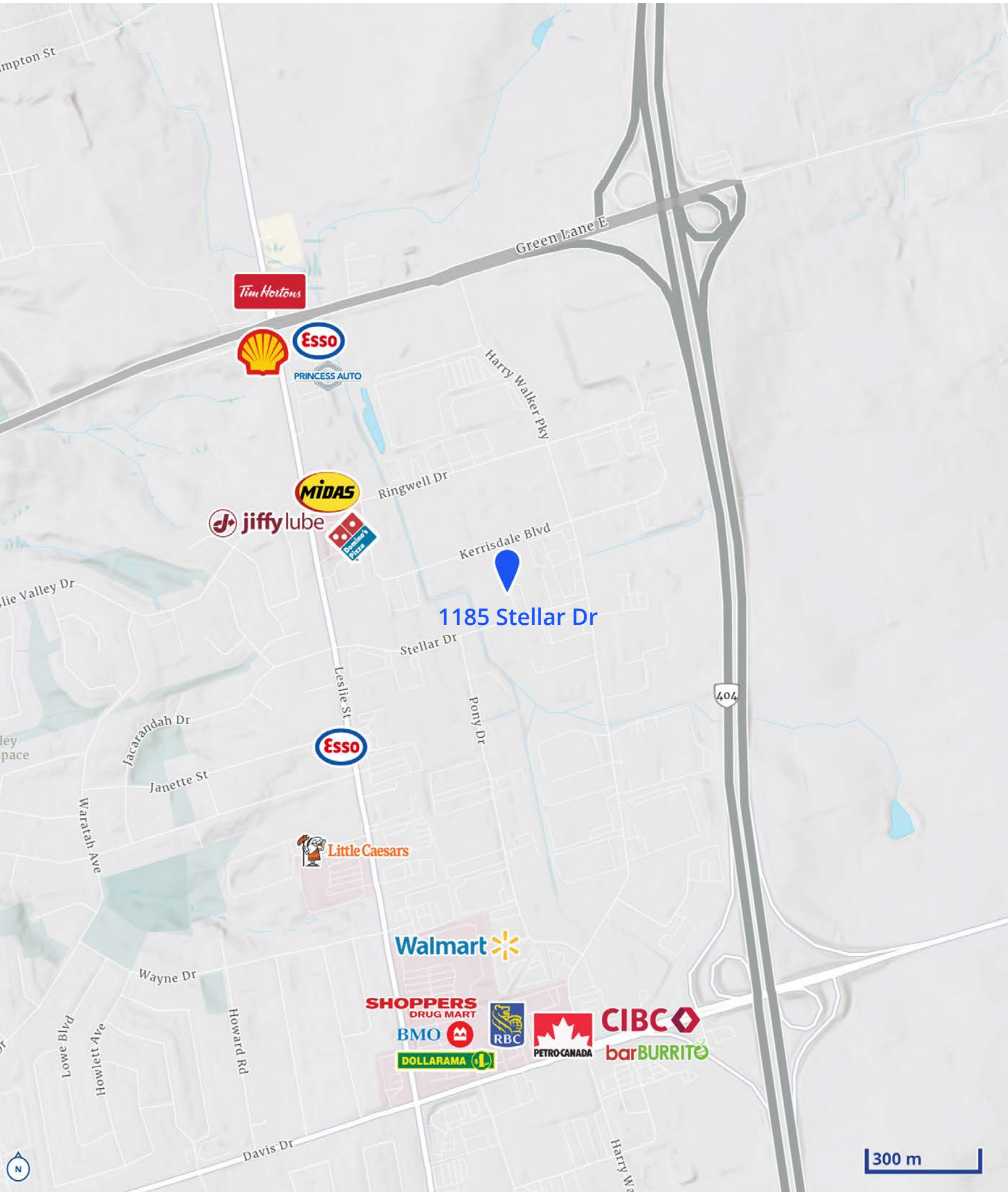
8 Bay Self Serve Car Wash



Opportunity to generate Income while securing a Furture Industrial Development Site

Location Overview

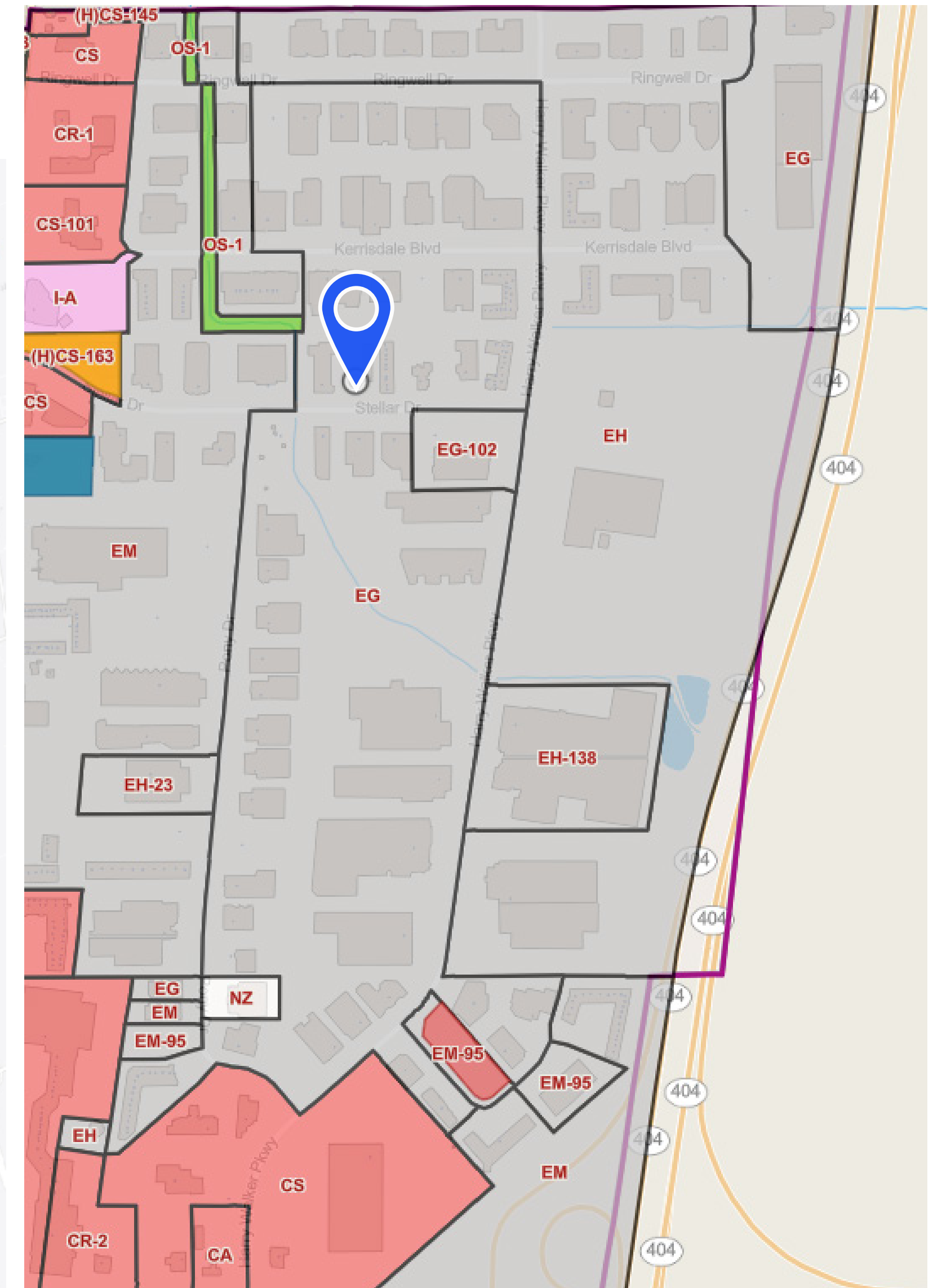
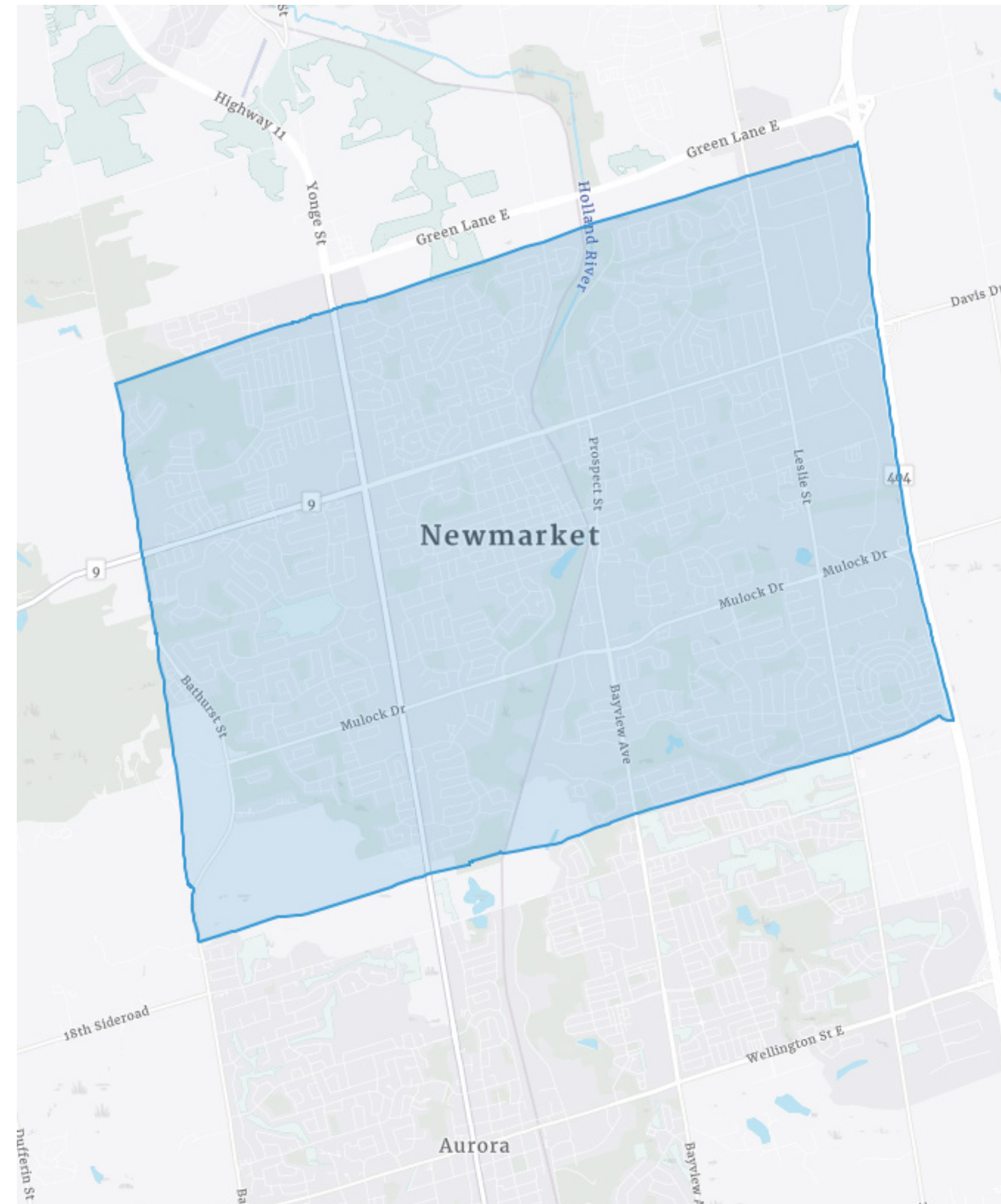
Amenities & Corporate Partners

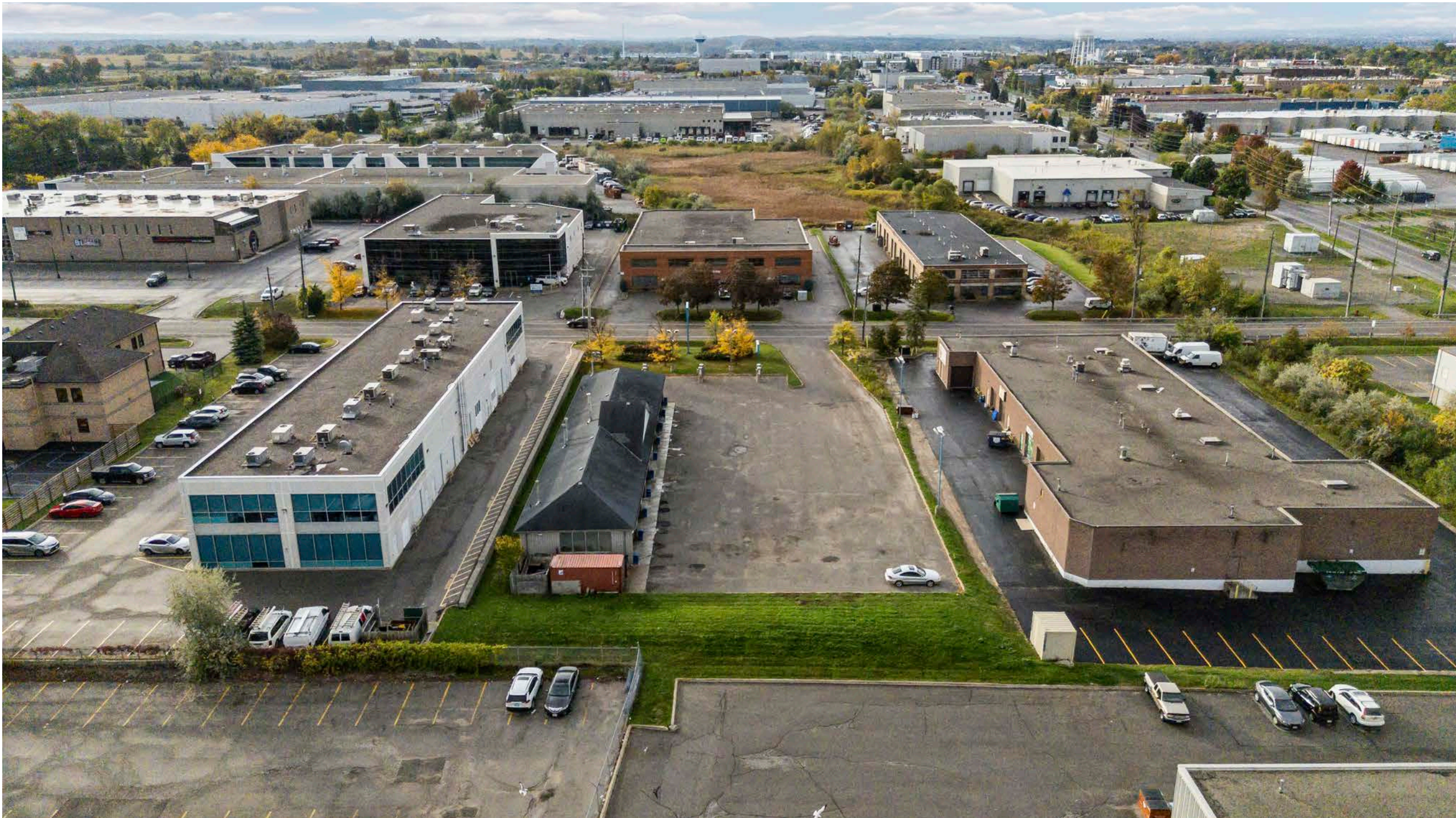


Permitted Uses & Zoning

Permitted Uses (EG)

- Adult Entertainment Parlour
- Body Rub Parlour
- Building Supply Outlet
- Domestic Animal Care Facility
- Emergency Service Facility
- Heavy Equipment Sales and Rental
- Manufacturing
- Micro-Industrial Use
- Motor Vehicle Service Shop
- Motor Vehicle Rental Establishment
- Night Club
- Office
- Public Storage Facility
- Restaurant
- Service or Repair Shop
- Sports Arena
- Transportation Depot
- Veterinary Hospital
- Warehouse
- Wholesale Operations





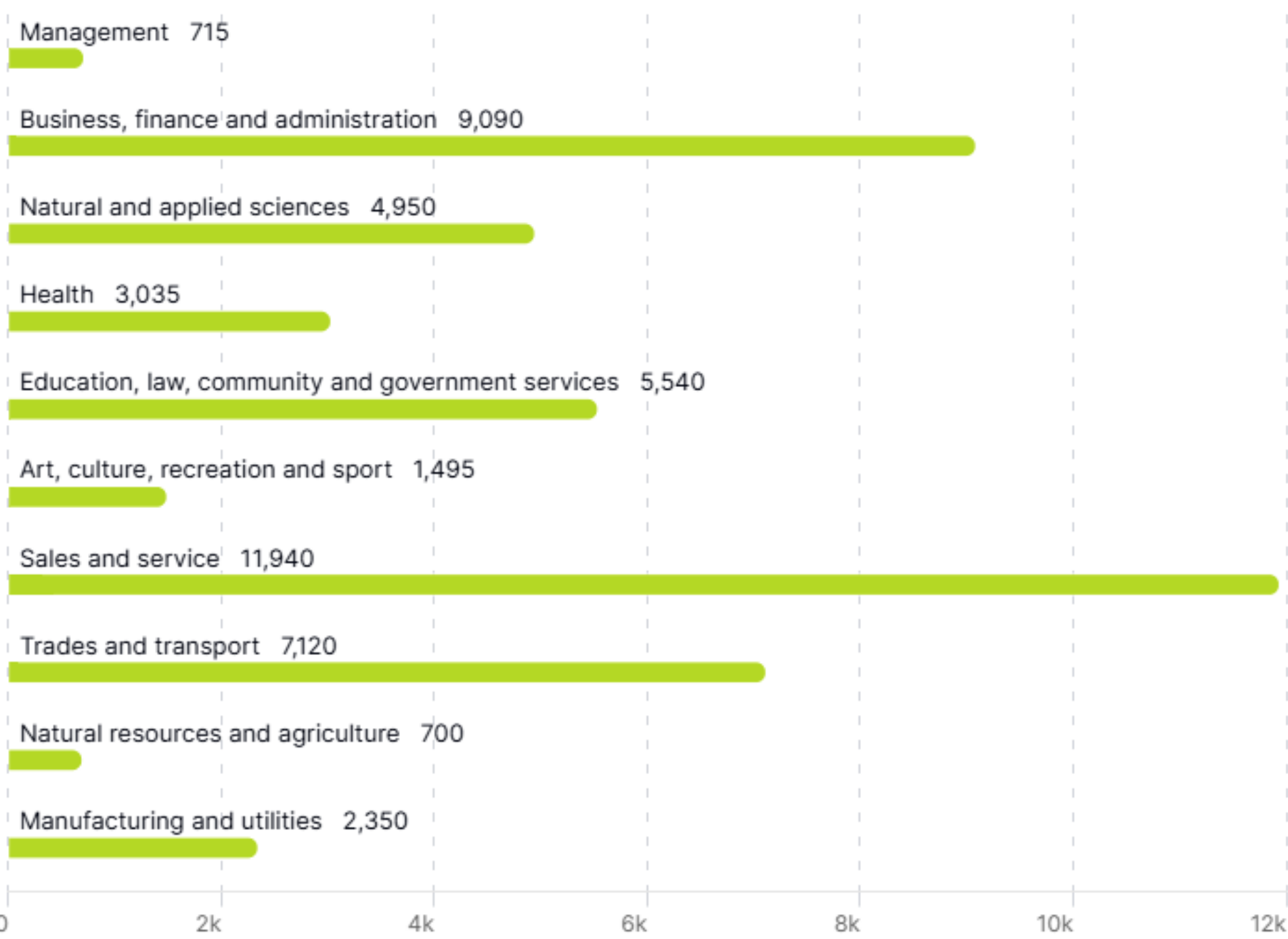
Area Demographics

Newmarket Overview

The Town of Newmarket is located in York Region and is home to over 85,000 residents and is known for being one of the country's country's most dynamic, diverse and desirable towns to live and work in. Newmarket is also widely considered a progressive place with a reputation for innovation, particularly in its environmental projects.

Its proximity to 400 series highways, sprawling parks and trails and affordable housing makes Newmarket an ideal location for young families and professionals alike. Newmarket is a Provincial Urban Growth Centre, meaning the province sees it as a place with planned intensification and growth. Key sectors: health sciences (notably Southlake Regional Health Centre), business services, manufacturing, retail.

Major Job Markets



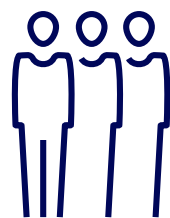
Source: <https://www.newmarket.ca/Business/ecodev/locatehere/Pages/Labour-market.aspx>



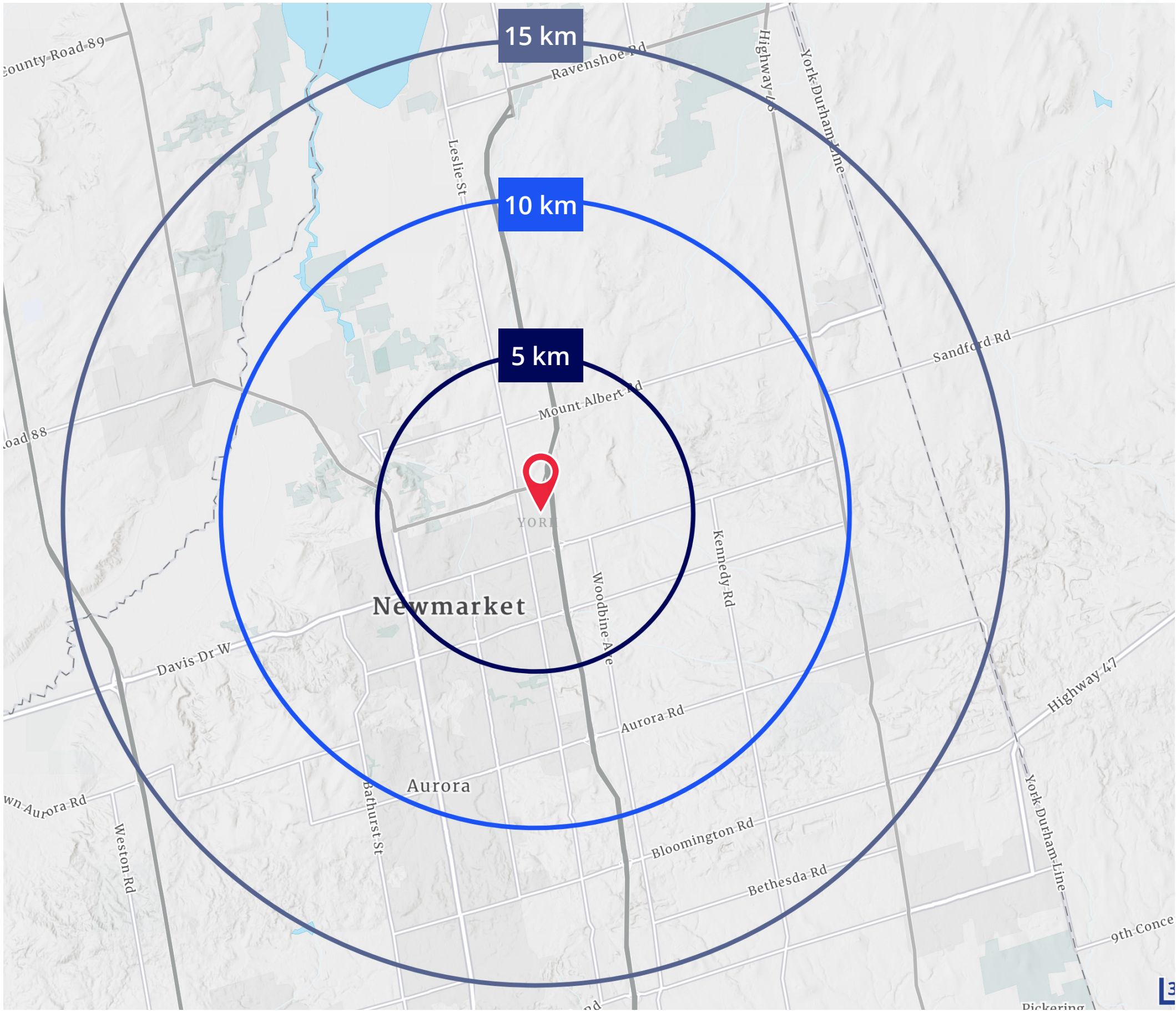
Current Population
87,942



Average Household Income
\$116,456



Median Population Age
40.9



5 km
Population \$71,478
Average Household Income \$151,979
Labour Force Population \$38,653

10 km
Population \$185,357
Average Household Income \$163,884
Labour Force Population \$103,093

15 km
Population \$298,132
Average Household Income \$167,681
Labour Force Population \$165,362

Source: Environics 2024



Stellar Dr

Greg Clark**

Executive Vice President
+1 647 801 4431
gregory.clark@colliers.com

Daniel Bahrami

Sales Representative
+1 416 689 7009
daniel.bahrami@colliers.com

Madison Scott

Sales Representative
+1 905 516 7154
madison.scott@colliers.com

Colliers Canada

3389 Steeles Ave E, Suite 400
Toronto, ON.
+1 416 777 2200
collierscanada.com

This document has been prepared by Colliers for advertising and general information only. Colliers makes no guarantees, representations or warranties of any kind, expressed or implied, regarding the information including, but not limited to, warranties of content, accuracy and reliability. Any interested party should undertake their own inquiries as to the accuracy of the information. Colliers excludes unequivocally all inferred or implied terms, conditions and warranties arising out of this document and excludes all liability for loss and damages arising there from. This publication is the copyrighted property of Colliers and/or its licensor(s). Copyright © 2025. All rights reserved. This communication is not intended to cause or induce breach of an existing listing agreement.** Broker, *Sales Representative.