



1213 Center St

1213 Center St
Lansing, Michigan 48906

Property Highlights

- Up to 12,891 SF of office/retail space in this Prime Old Town location.
- Two buildings connected by a short breezeway; Currently single tenant use.
- Space features brick and exposed wood.
- 45 on-site and free street parking available.
- 1,200 SF of storage space available in the basement of the front building.
- The entire property was new in 2007.

Offering Summary

Sale Price:	\$1,800,000
Lease Rate:	\$18.50 SF/yr (MG)
Total Size:	12,981 SF
Lot Size:	37,653 SF

Spaces	Lease Rate	Space Size
Front Building	\$18.50 SF/yr	5,792 SF
Suite A - Front Building	\$18.50 SF/yr	1,313 SF
Suite B - Front Building	\$18.50 SF/yr	1,474 SF
Suite C - Front Building	\$18.50 SF/yr	2,919 SF
Back Building	\$18.50 SF/yr	7,189 SF

For More Information



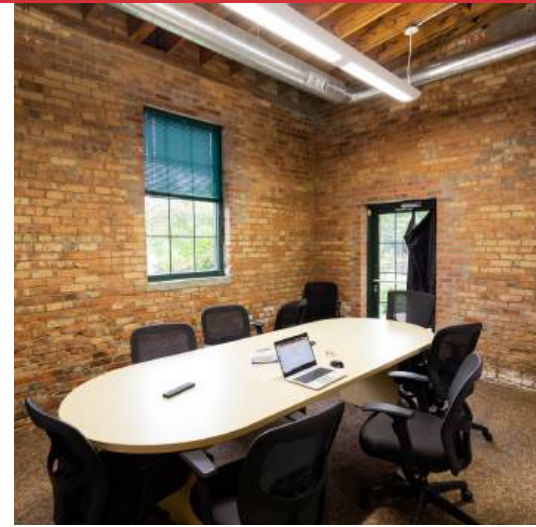
Dave Robinson

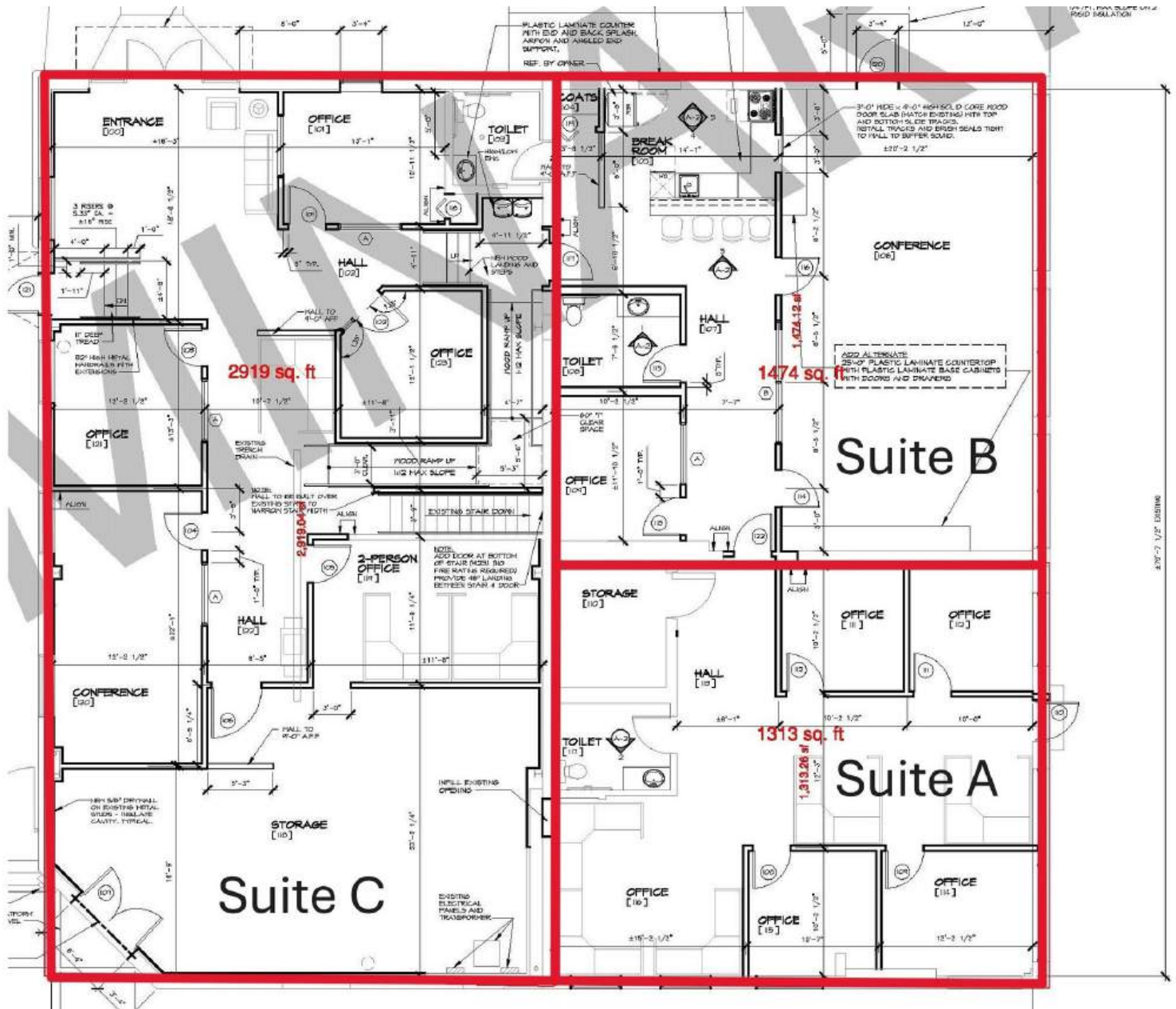
Associate Broker

O: 517 487 9222 | C: 517 599 6846

drobinson@naimidmichigan.com

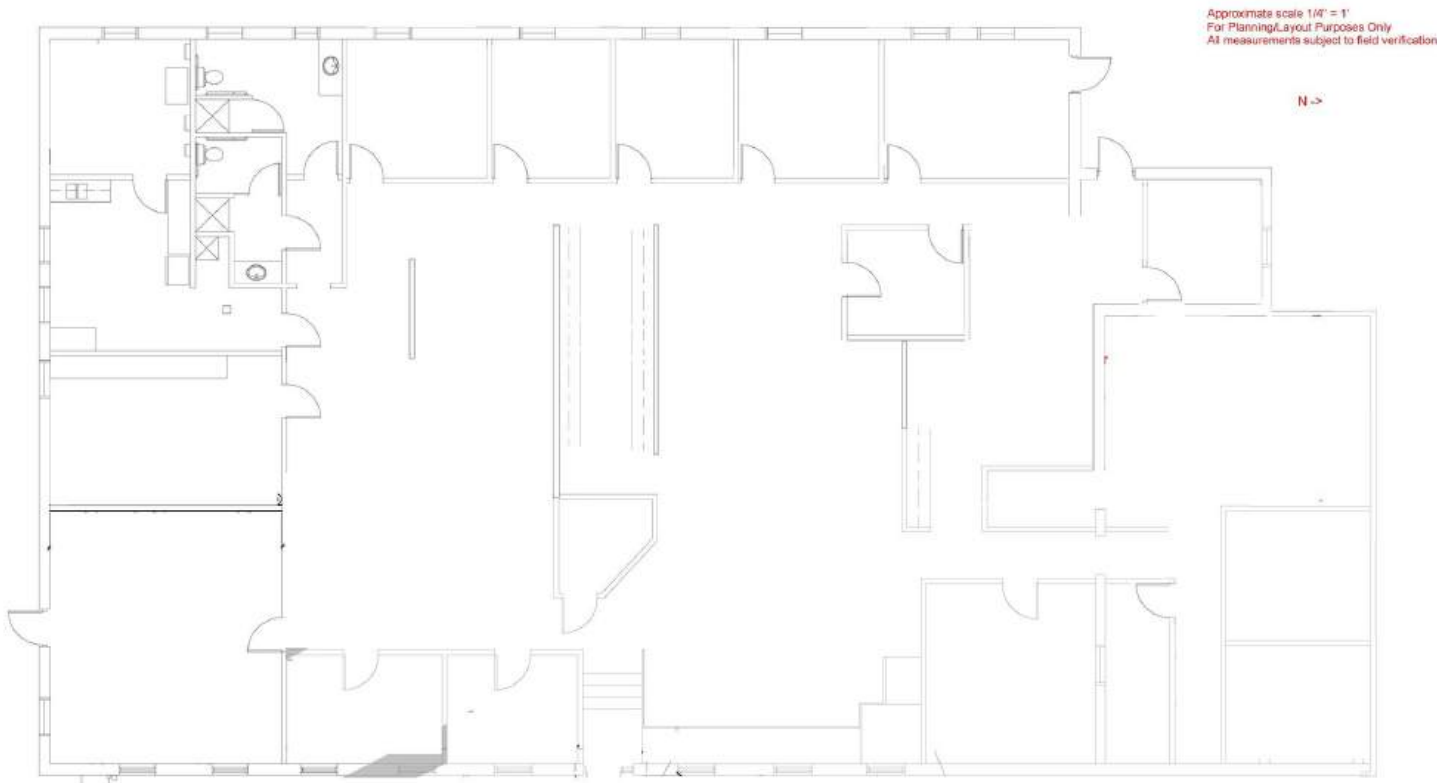






Front Building Floor Plan

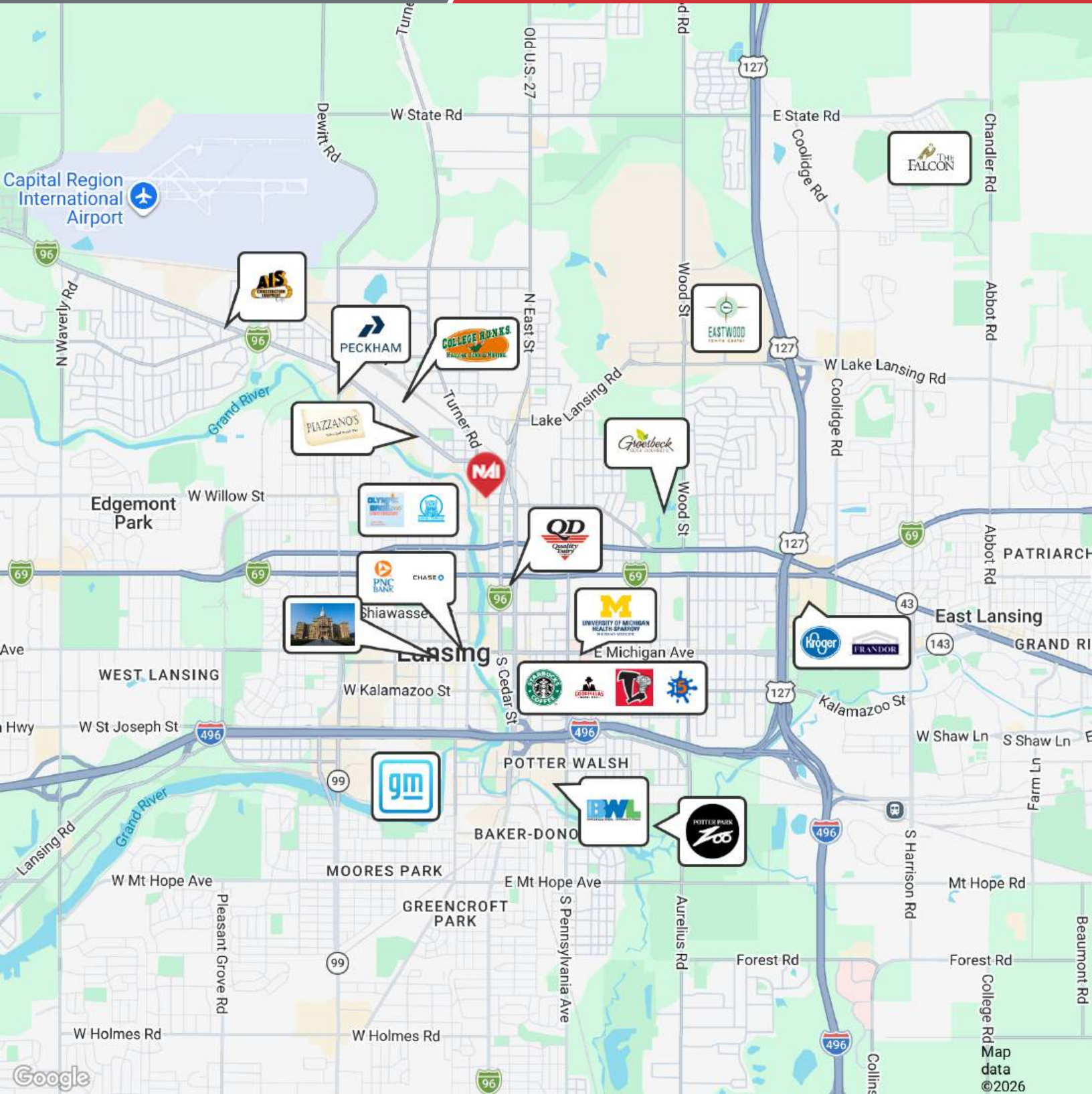
NO WARRANTY OR REPRESENTATION, EXPRESS OR IMPLIED, IS MADE AS TO THE ACCURACY OF THE INFORMATION CONTAINED HEREIN, AND THE SAME IS SUBMITTED SUBJECT TO ERRORS, OMISSIONS, CHANGE OF PRICE, RENTAL OR OTHER CONDITIONS. PRIOR SALE, LEASE OR FINANCING, OR WITHDRAWAL WITHOUT NOTICE, AND OF ANY SPECIAL LISTING CONDITIONS IMPOSED BY OUR PRINCIPALS NO WARRANTIES OR REPRESENTATIONS ARE MADE AS TO THE CONDITION OF THE PROPERTY OR ANY HAZARDS CONTAINED THEREIN ARE INTENDED TO BE IMPLIED



Back Building Floor Plan

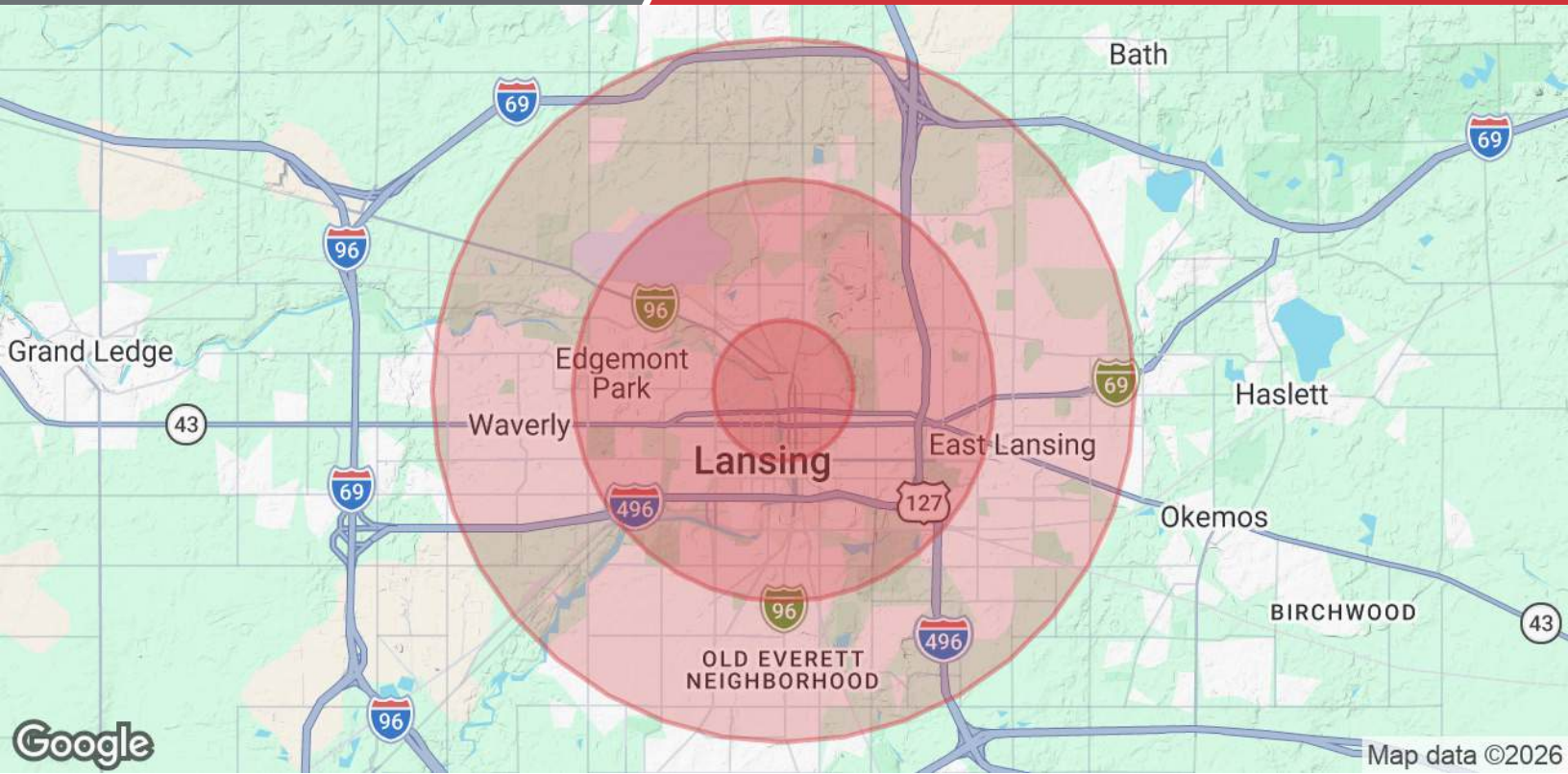
NO WARRANTY OR REPRESENTATION, EXPRESS OR IMPLIED, IS MADE AS TO THE ACCURACY OF THE INFORMATION CONTAINED HEREIN, AND THE SAME IS SUBMITTED SUBJECT TO ERRORS, OMISSIONS, CHANGE OF PRICE, RENTAL OR OTHER CONDITIONS, PRIOR SALE, LEASE OR FINANCING, OR WITHDRAWAL WITHOUT NOTICE, AND OF ANY SPECIAL LISTING CONDITIONS IMPOSED BY OUR PRINCIPALS NO WARRANTIES OR REPRESENTATIONS ARE MADE AS TO THE CONDITION OF THE PROPERTY OR ANY HAZARDS CONTAINED THEREIN ARE INTENDED TO BE IMPLIED

2149 Jolly Road, Suite 200
Okemos, MI 48864
517 487 9222 tel
naimidmichigan.com



NO WARRANTY OR REPRESENTATION, EXPRESS OR IMPLIED, IS MADE AS TO THE ACCURACY OF THE INFORMATION CONTAINED HEREIN, AND THE SAME IS SUBMITTED SUBJECT TO ERRORS, OMISSIONS, CHANGE OF PRICE, RENTAL OR OTHER CONDITIONS, PRIOR SALE, LEASE OR FINANCING, OR WITHDRAWAL WITHOUT NOTICE, AND OF ANY SPECIAL LISTING CONDITIONS IMPOSED BY OUR PRINCIPALS NO WARRANTIES OR REPRESENTATIONS ARE MADE AS TO THE CONDITION OF THE PROPERTY OR ANY HAZARDS CONTAINED THEREIN ARE INTENDED TO BE IMPLIED

2149 Jolly Road, Suite 200
 Okemos, MI 48864
 517 487 9222 tel
naimidmichigan.com



Population	1 Mile	3 Miles	5 Miles
Total Population	13,031	82,525	185,361
Average Age	31.9	34.0	34.1
Average Age (Male)	31.3	32.7	32.2
Average Age (Female)	31.0	34.6	35.2
Households & Income	1 Mile	3 Miles	5 Miles
Total Households	6,257	38,400	80,561
# of Persons per HH	2.1	2.1	2.3
Average HH Income	\$42,481	\$53,716	\$57,512
Average House Value	\$83,668	\$100,365	\$114,711

2020 American Community Survey (ACS)