



FOR LEASE
CALL FOR PRICING



**10920 MOSS PARK RD.
ORLANDO, FL 32832**

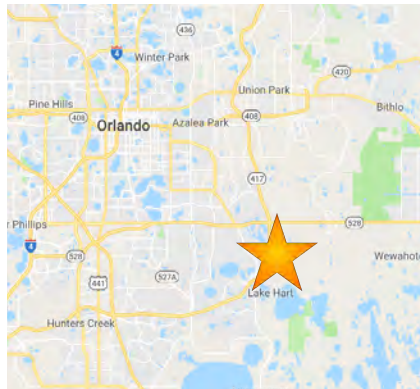
**MEDICAL VILLAGE
AT NONA**

For More Information:

Bobby Bridges

407 616 1025

bobby@v3capital.com



PROPERTY HIGHLIGHTS

- Rare second generation, move in ready medical office
- Two leasing options available. 3,083 SF & 2,000 SF.
- Prominent location with easy access and visibility from FL-417
- Pylon signage available
- Ample parking
- Recent construction with high-end finishes

DEMOGRAPHICS

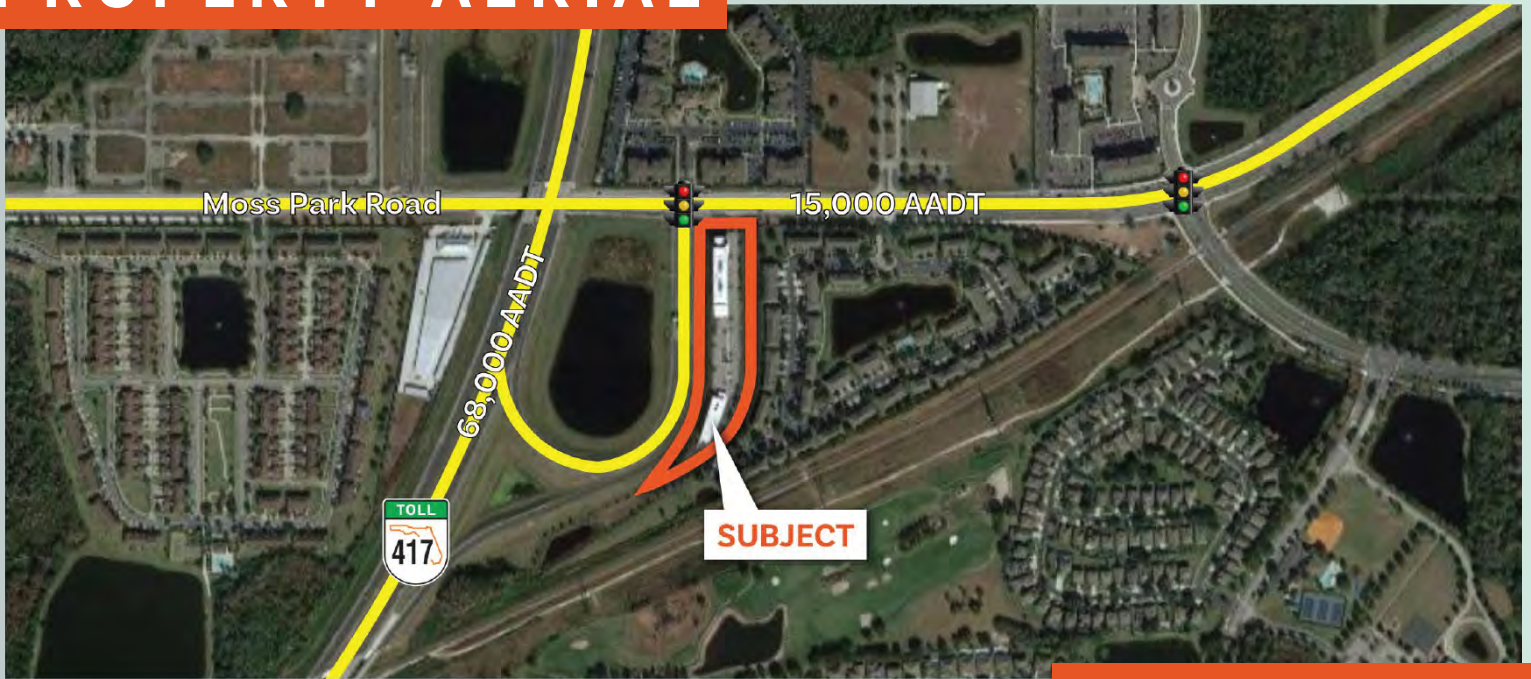
	1 MILE	3 MILE	5 MILE
Population	7,483	35,550	60,334
Households	2,631	11,978	21,084
Median HH Income	\$95,627	\$99,763	\$95,967



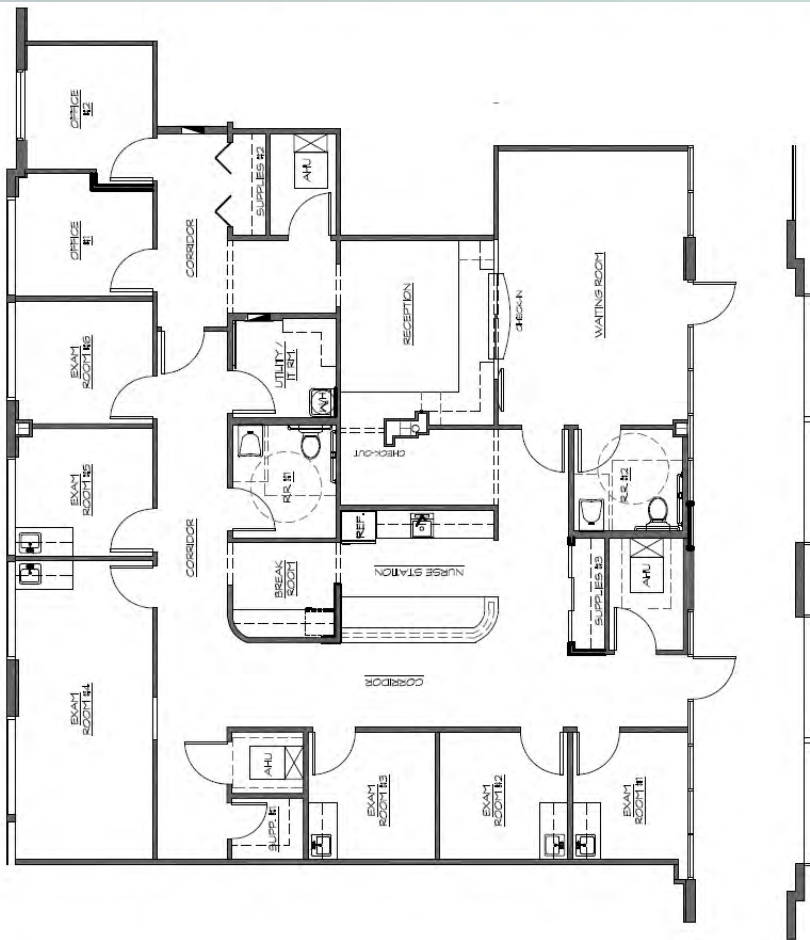
www.v3commercialadvisors.com

The information contained herein has been given to us by the owner of the property or other sources we deem reliable. We have no reason to doubt its accuracy, but we do not guarantee it. All information should be verified prior to purchase or lease.

PROPERTY AERIAL



SUITE 224



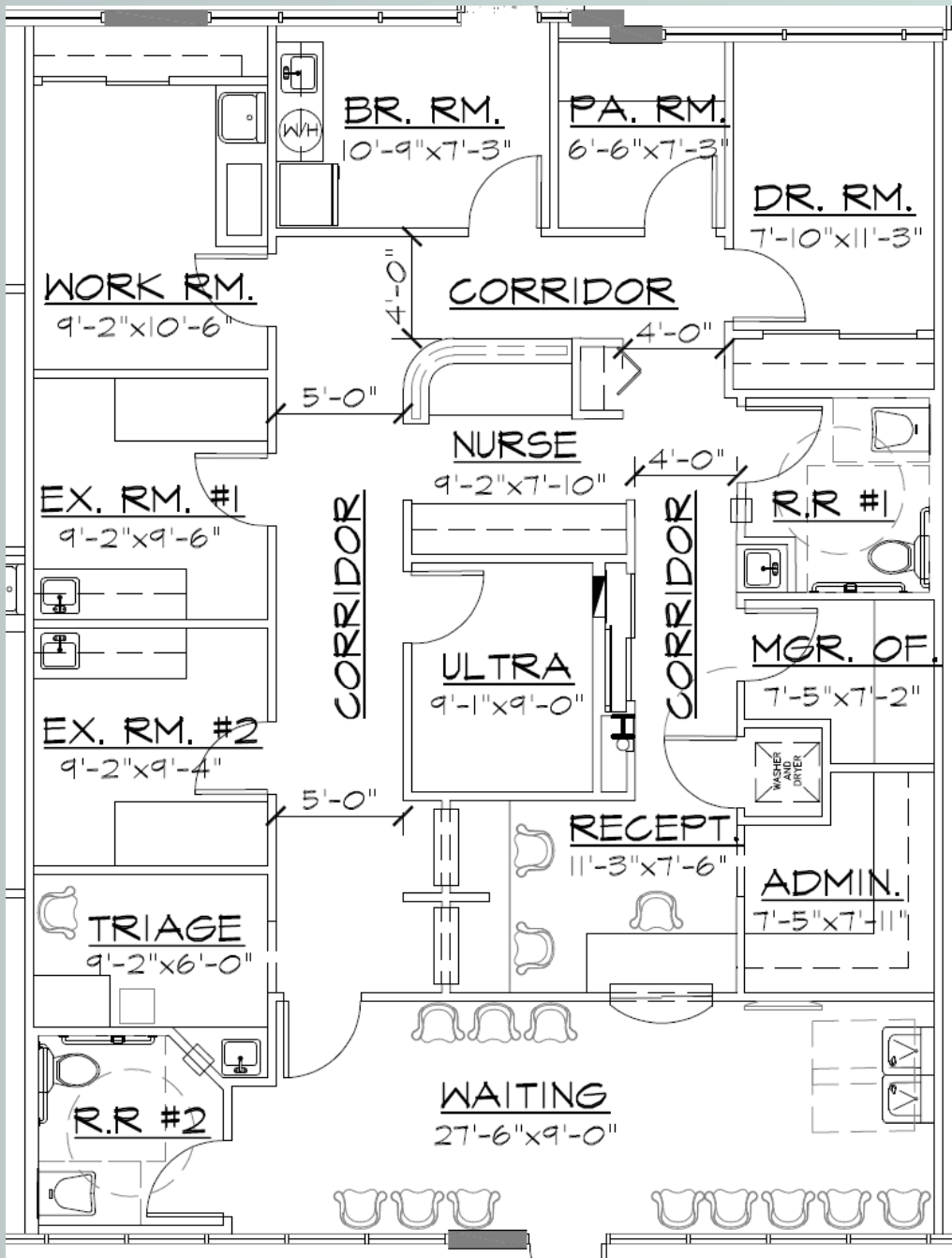
SIZE: 3,083 SF
AVAILABLE: IMMEDIATELY

- Located on the second floor
- Six exam rooms
- One procedure room
- Two doctors offices
- Nurses station
- Spacious waiting room
- Two ADA bathrooms

www.v3commercialadvisors.com

The information contained herein has been given to us by the owner of the property or other sources we deem reliable. We have no reason to doubt its accuracy, but we do not guarantee it. All information should be verified prior to purchase or lease.

Bobby Bridges
407 616 1025
bobby@v3capital.com



SUITE 104

SIZE: 2,000 SF
AVAILABLE: IMMEDIATELY

- Located on the first floor
- Three exam rooms
- Three doctors offices
- Triage Space
- Spacious waiting room
- Two ADA bathrooms

www.v3commercialadvisors.com

The information contained herein has been given to us by the owner of the property or other sources we deem reliable. We have no reason to doubt its accuracy, but we do not guarantee it. All information should be verified prior to purchase or lease.

Bobby Bridges
 407 616 1025
bobby@v3capital.com