

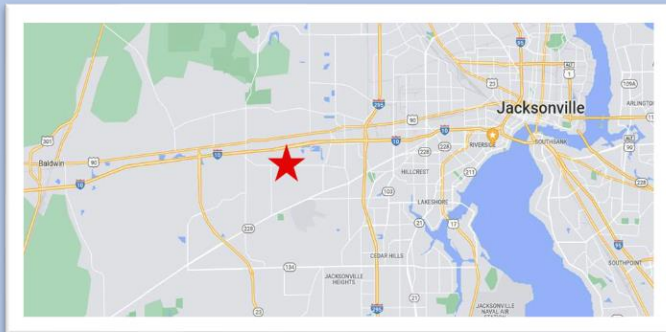
FOR SALE: PUD ZONED LAND

0 Crystal Springs Road
Jacksonville, Florida 32218



PROPERTY DESCRIPTION

- ➔ **Location:** .7 miles south of Interstate 10, on the north west corner of Crystal Springs Road and Hammond Blvd.
- ➔ **Estimated Land Size:** 9.85+- acres
- ➔ **Zoning:** PUD which allows retail, office & medical
[Click To View PUD Ordinance](#)
- ➔ **Frontage/Access/Exposure:** +-656' along north side of Crystal Springs Rd
- ➔ **Water & Sewer:** [Click For JEA Availability Letter](#)
- ➔ **Proximity:** Trinity Baptist Church & School & I-10
- ➔ **Price:** \$2,150,000.00



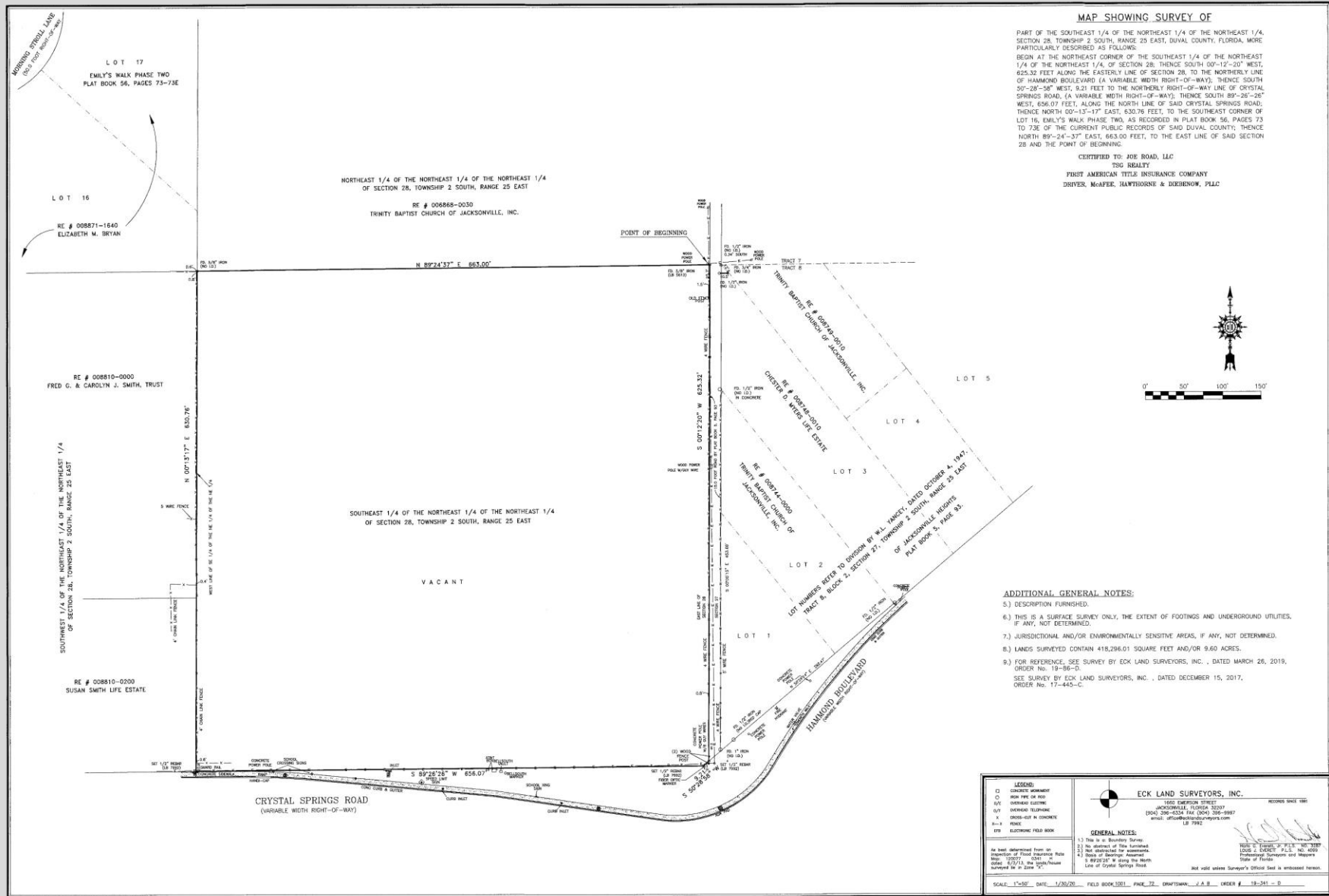
Cord Butler
60 Ocean Blvd., Suite #15
Atlantic Beach, Florida 32233
Phone: (904) 465- 1000
Email: cord@thecordellgroup.com

Donald G. "Beau" Maurer
60 Ocean Blvd., Suite #15
Atlantic Beach, Florida 32233
Phone: (904) 370-0600
Email: beau@thecordellgroup.com

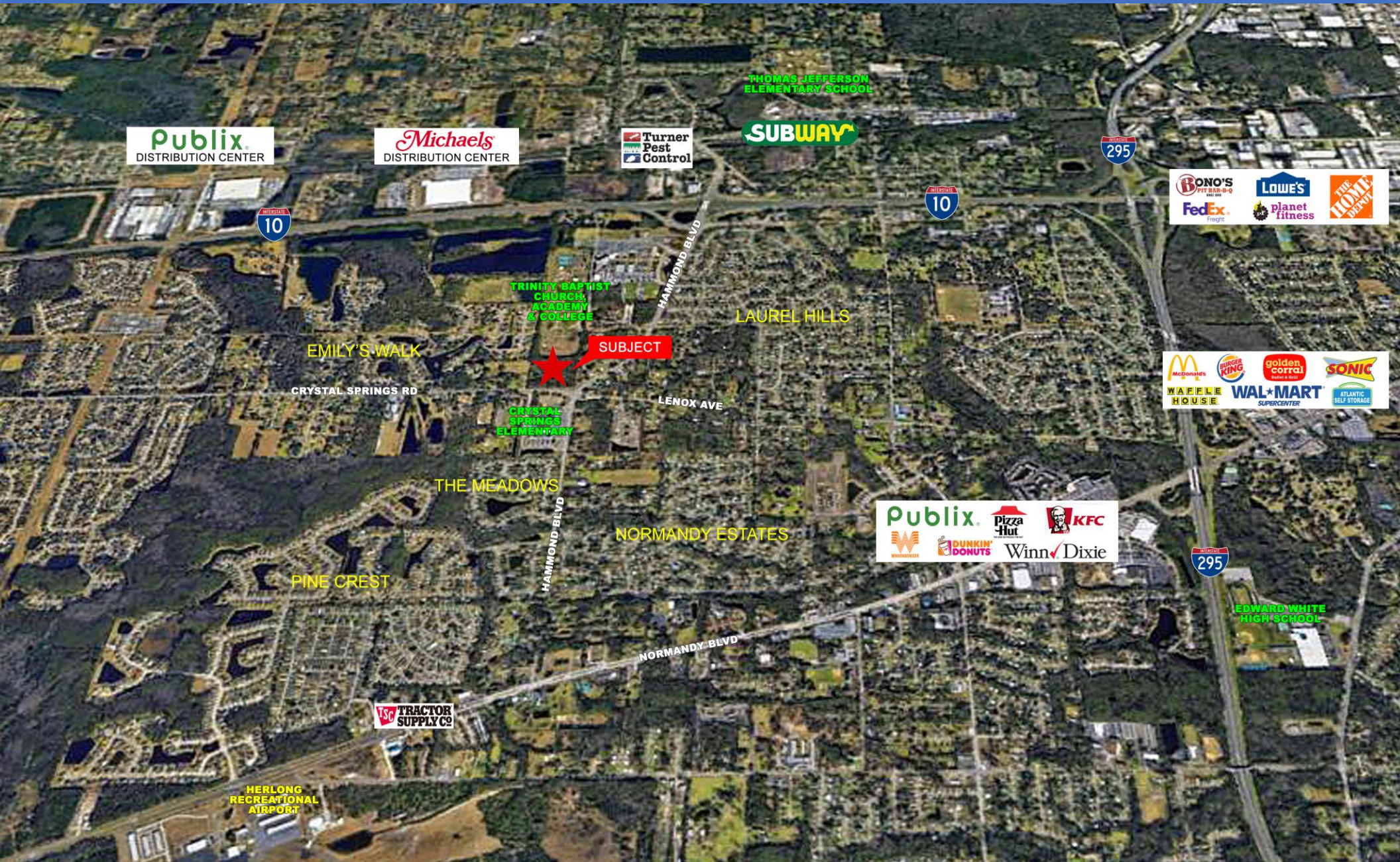


Visit Our Website For Complete Listings

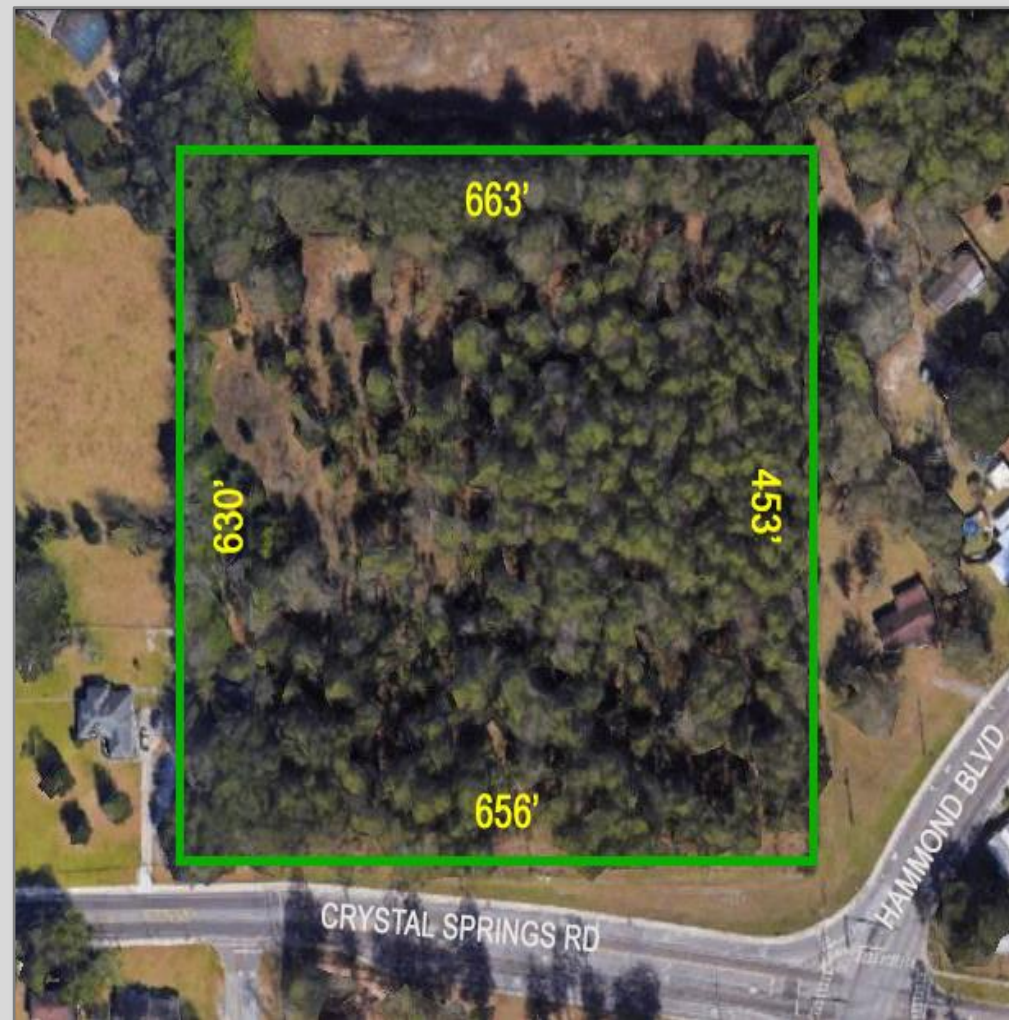
The information contained herein has been obtained from sources believed reliable. While we do not doubt it's accuracy, we have not verified it and make no guarantee, warranty, or representation about it. It is your responsibility to independently confirm its accuracy and completeness.



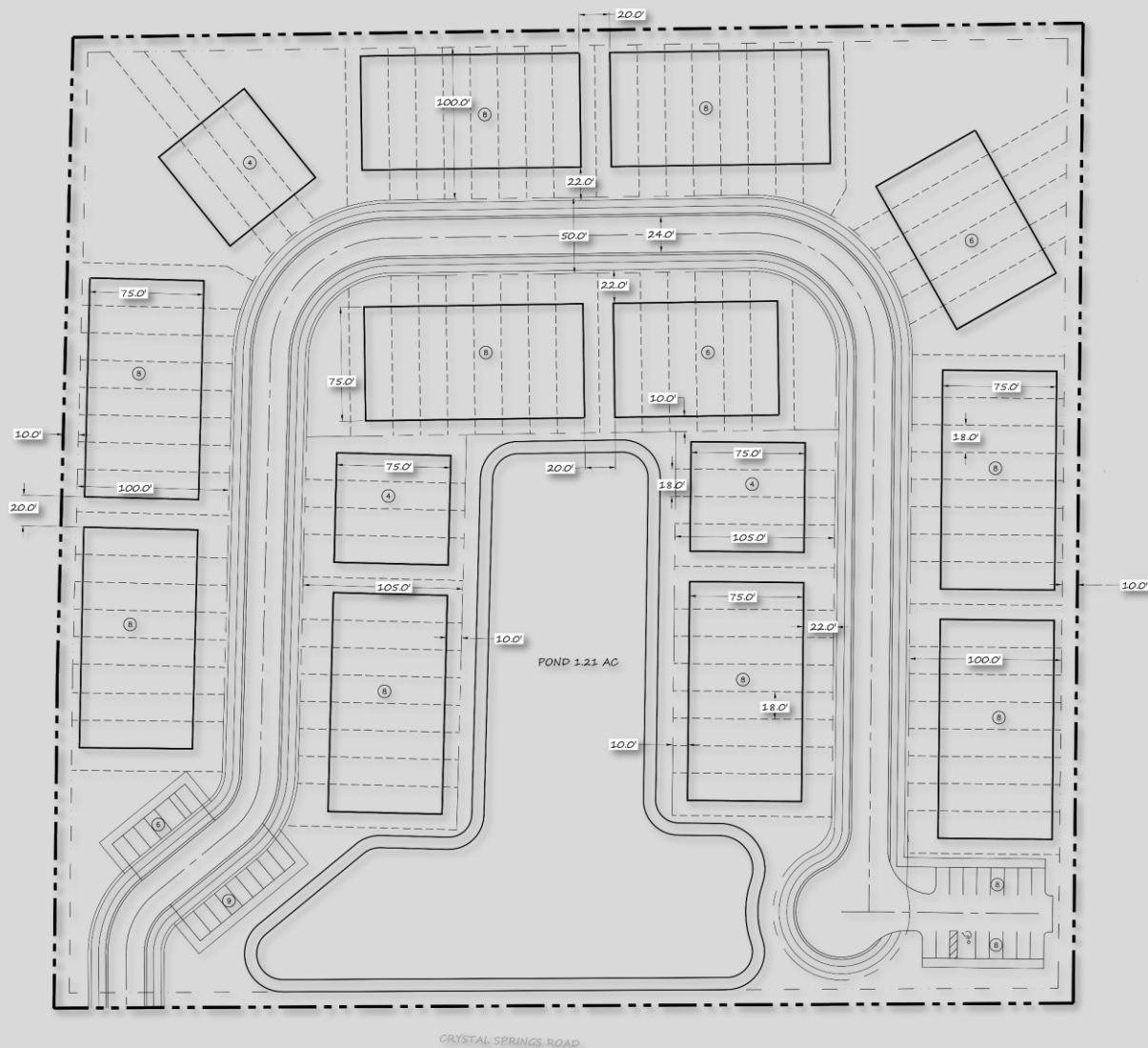
AERIAL



TAX MAP & BOUNDARY DIMENSIONS



CONCEPTUAL SITE PLAN – Potential Townhome Development



of Units: 96 (as depicted)

The above conceptual site plan is included for informational purposes only. Seller and Sellers agent make no warranty or guarantee, implied or otherwise, about the ability to develop the site with townhomes as depicted based on the current PUD. It is up to the Buyer to independently verify the requirements necessary to develop the site as may be intended.



PHOTOS



View From Crystal Springs Rd



View Looking North



View Looking Northeast



View Looking South



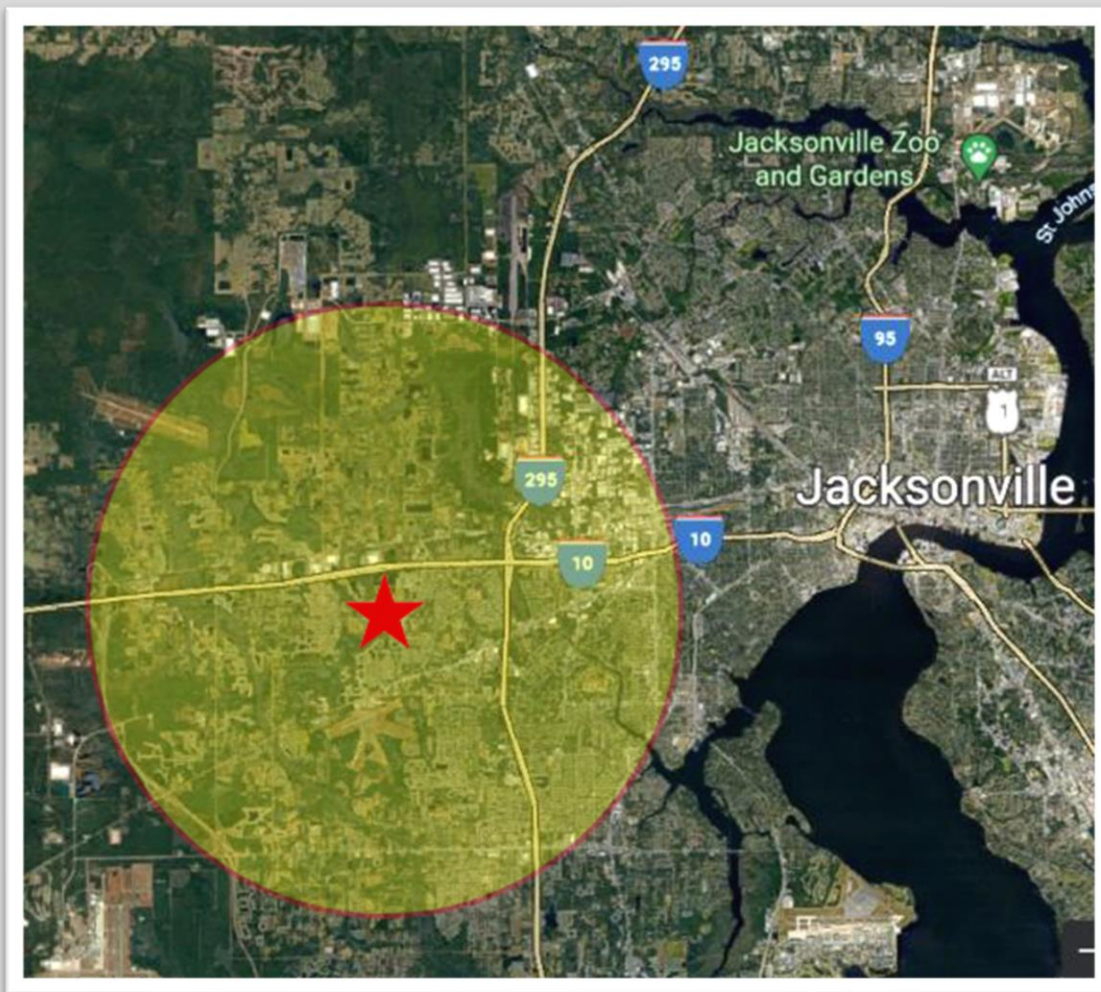
View Looking West



View Looking East



AREA DEMOGRAPHICS



5 MILE RADIUS

| | |
|-------------------------------|----------|
| 2022 Population | 129,956 |
| 2027 Projected Population | 135,628 |
| 2022 Total Households | 49,545 |
| 2027 Projected Households | 51,271 |
| 2022 Average Household Income | \$77,790 |
| 2022 Median Age | 35.5 |
| 2022 Total Housing Units | 54,898 |
| 2022 Total Businesses | 6,612 |



Downtown
10 Minutes



JIA Airport
20 Minutes



I-10
2 Minutes



I-295
5 Minutes