

CORNER OF OBERLIN AND WADE AND FRONTS ON ANNAPOLIS DR



**1312 ANNAPOLIS DRIVE
Raleigh, NC 27608**

Lease Information

Available Suites	Entire building
Availability	Immediately
Accessibility	Easy access from both Oberlin Road and Wade Avenue
Amenities	Built to suit (with core of existing building)
Lease Rate	\$26.50
Service Type	Full Service
Furniture Included	No



Ideally located on Annapolis Drive at the intersection of Wade Avenue and Oberlin Road, just minutes from the Village District and Downtown Raleigh.

BUILDING INFORMATION

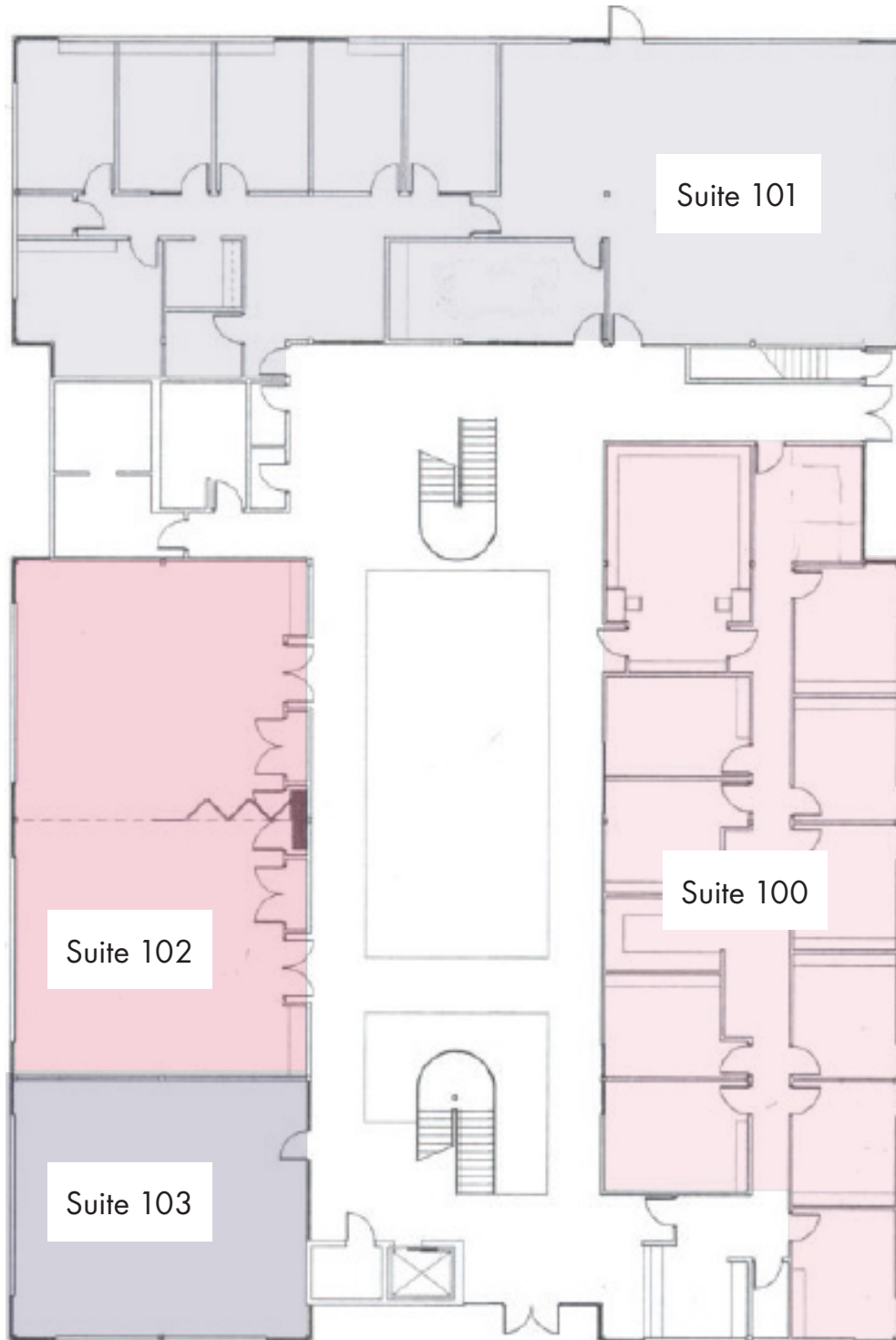
Building SF	26,738 RSF
Stories	2
Typical Floor SF	13,369 SF
Building Class	B
Year Built	1979
Parking	4.0 spaces per 1,000 SF Surface
Vehicle charging station	No

AMENITIES

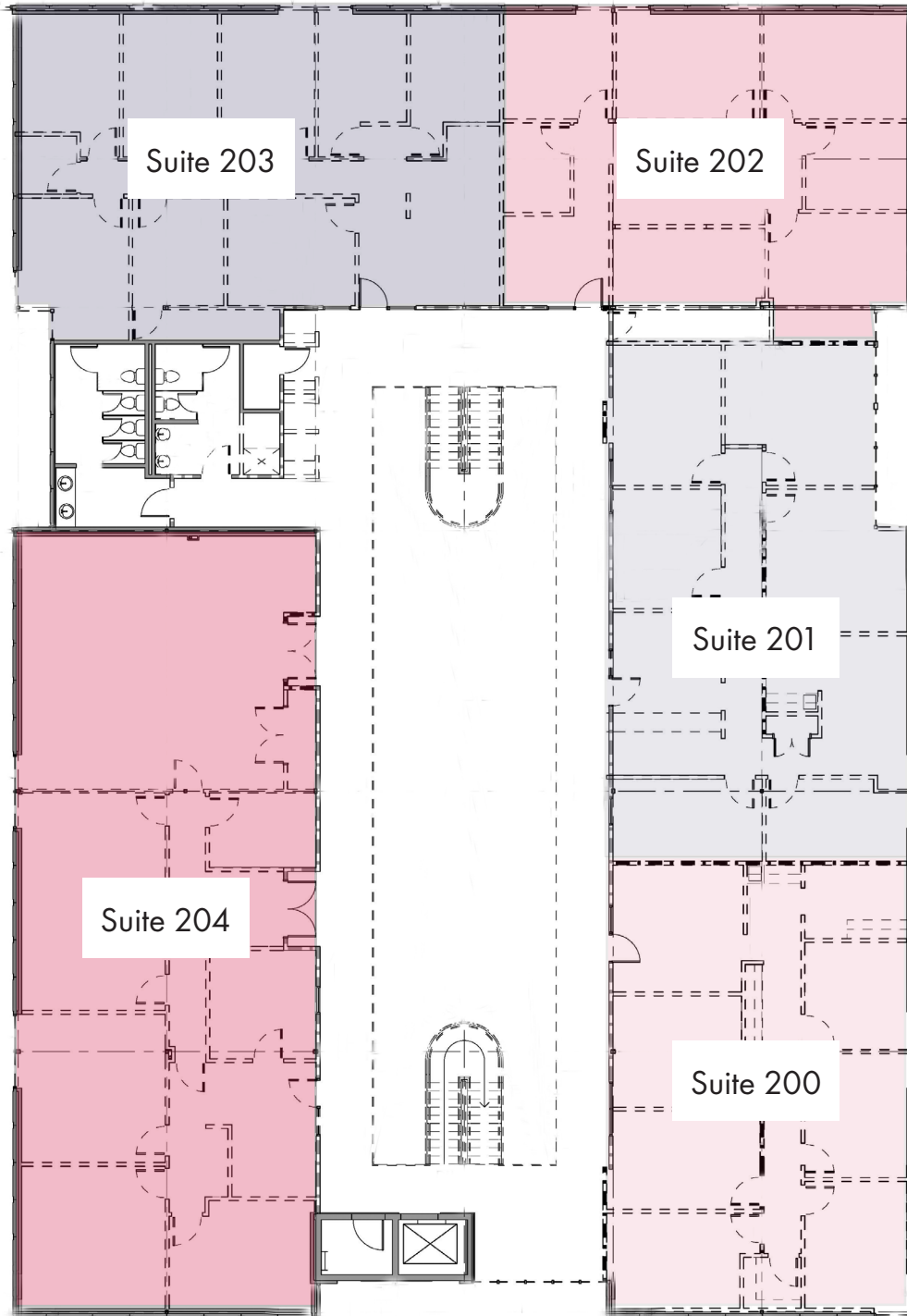
- Built to suit (using core of existing building)
- Divisible to minimum of $\pm 5,000$ SF
- Easily accessible from both Oberlin Road and Wade Avenue
- Within close proximity to the Village District with numerous shops and eateries
- Within close proximity to Downtown Raleigh



1ST FLOOR PLAN



2ND FLOOR PLAN



Location Map



LINKS

[Raleigh Bus Routes](#)

[Chamber of Commerce](#)

	2-Mile	5-Mile
Daytime Population	53,324	255,729
Walk Score	Somewhat Walkable (54)	

NEARBY ATTRACTIONS

- Village District
- Downtown Raleigh
- NC State University
- Pullen Park
- Dorothea Dix Park

EASE OF ACCESS

- I-440 2.1 miles
- Downtown Raleigh 3.3 miles
- I-40 5.0 miles
- RDU International Airport 10.6 miles
- Research Triangle Park 15.0 miles



Visit our website for more information.

Property Photos