

# RETAIL/OFFICE BUILDING AVAILABLE FOR LEASE

1880-1898 W Stadium Blvd, Ann Arbor, MI 48103



## CONTACT US:

**David Mrachko**

davidmrachko@hannacre.com

(216) 214-1197





# RETAIL/OFFICE BUILDING AVAILABLE FOR LEASE

PROPERTY OVERVIEW

1880-1898 W Stadium Blvd, Ann Arbor, MI 48103

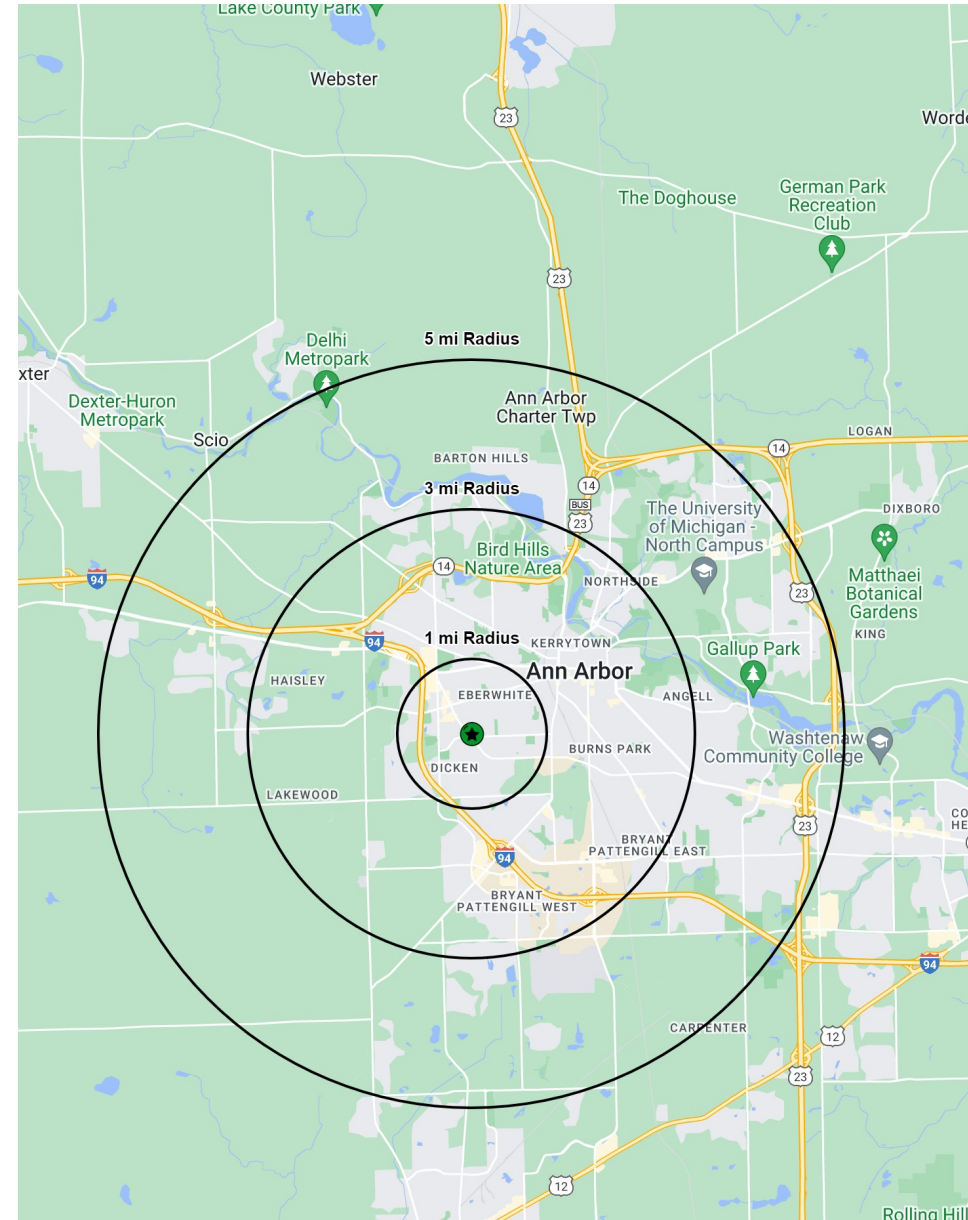
## PROPERTY OVERVIEW

- High profile retail/office/medical property
- Available Space: 4,236 SF – Divisible
- First floor space with direct suite entry
- Corner location with a traffic signal
- Located off of W Stadium Blvd with 21,823 vehicles per day
- Close proximity to I-94 with 64,100 vehicles per day

### 2023 DEMOGRAPHICS

	1 Mile	3 Miles	5 Miles
Population	14,398	91,396	152,062
Households	6,719	37,223	60,483
Average HH Income	\$152,182	\$146,215	\$152,030
Median HH Income	\$112,207	\$104,575	\$109,191
Daytime Population	4,337	61,798	95,540

[View in Google Maps](#)



### CONTACT US:

**David Mrachko**

davidmrachko@hannacre.com

(216) 214-1197

# RETAIL/OFFICE BUILDING AVAILABLE FOR LEASE

PROPERTY OVERVIEW

1880-1898 W Stadium Blvd, Ann Arbor, MI 48103



## CONTACT US:

**David Mrachko**

davidmrachko@hannacre.com

(216) 214-1197





# RETAIL/OFFICE BUILDING AVAILABLE FOR LEASE

MICRO AERIAL

1880-1898 W Stadium Blvd, Ann Arbor, MI 48103



CONTACT US:

**David Mrachko**

davidmrachko@hannacre.com

(216) 214-1197

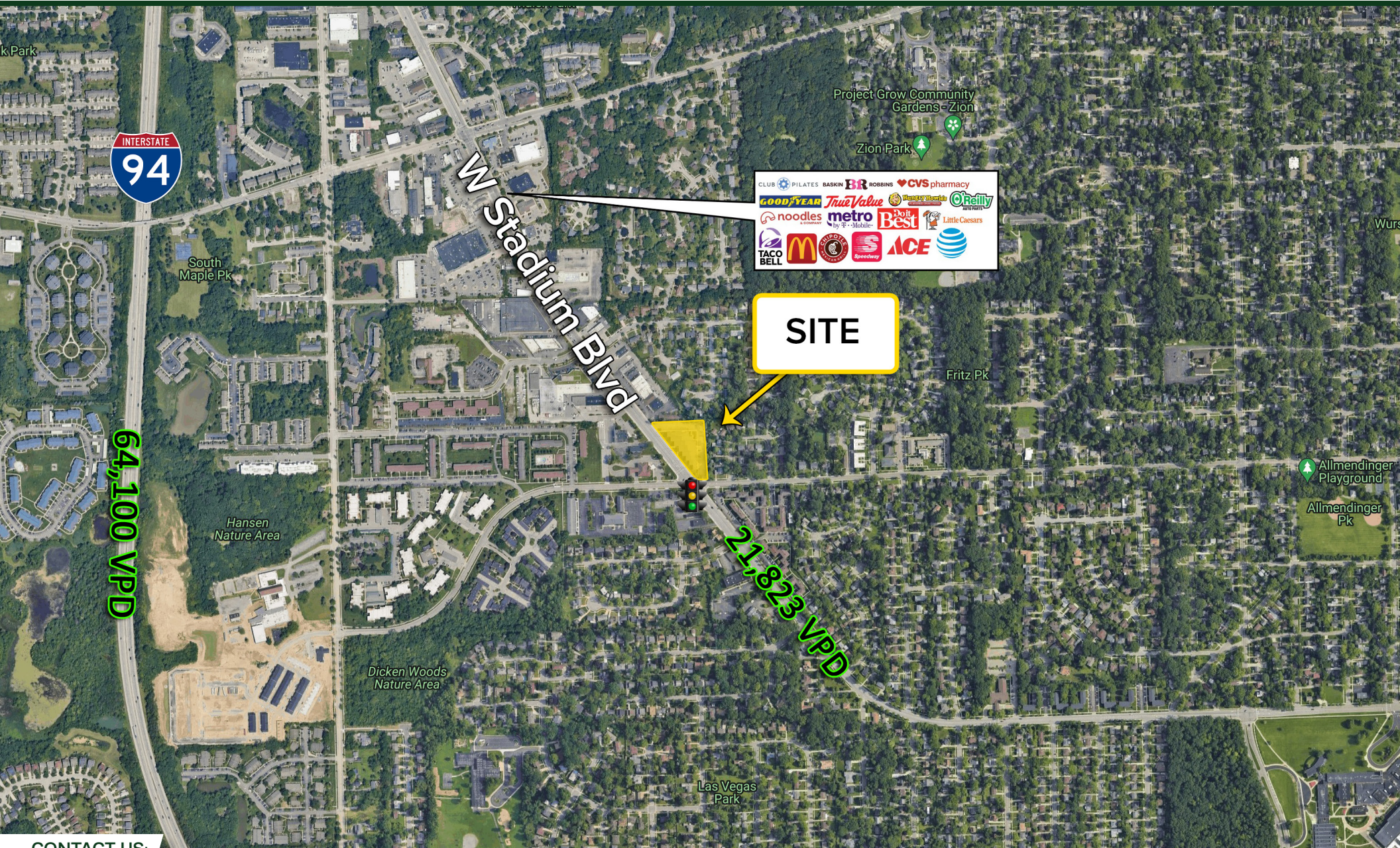
**HANNA**  
COMMERCIAL REAL ESTATE



# RETAIL/OFFICE BUILDING AVAILABLE FOR LEASE

MACRO AERIAL

1880-1898 W Stadium Blvd, Ann Arbor, MI 48103



CONTACT US:

David Mrachko

davidmrachko@hannacre.com

(216) 214-1197

**HANNA**  
COMMERCIAL REAL ESTATE



# RETAIL/OFFICE BUILDING AVAILABLE FOR LEASE

MARKET AERIAL

1880-1898 W Stadium Blvd, Ann Arbor, MI 48103



CONTACT US:

David Mrachko  
davidmrachko@hannacre.com  
(216) 214-1197

