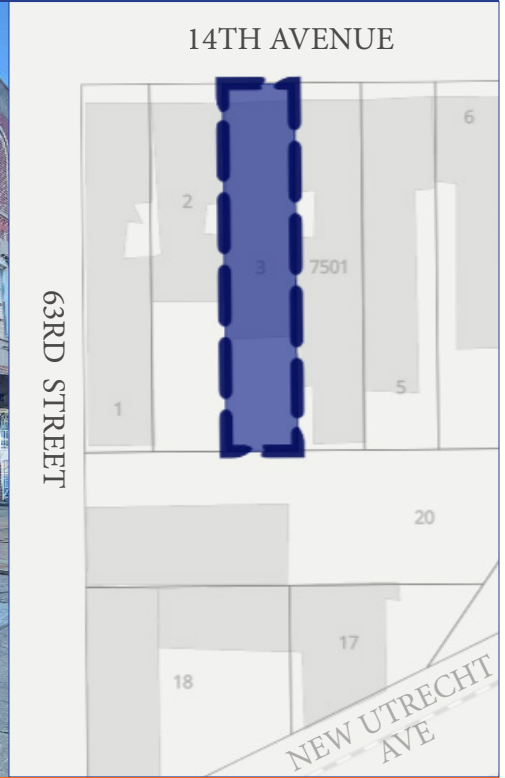
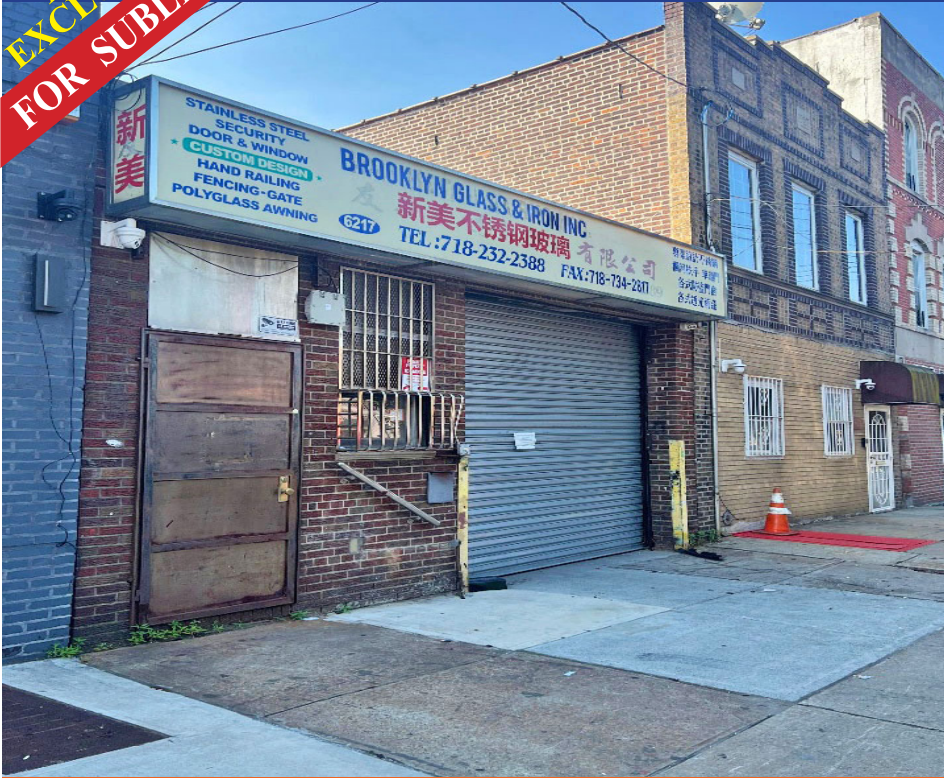




6217 14TH AVE BROOKLYN, NY 11219

**NEW
EXCLUSIVE
FOR SUBLEASE**

Borough Park | 2,000 SF Warehouse with Office



PROPERTY INFORMATION

LOCATION	On 14th Ave between 62nd St and 63rd St
BLOCK / LOT	5734 / 3
AVAILABLE SF	2,000
ZONING	M1-1

REDUCED PRICE
\$5,500 ▶ \$5,300/month
(Sublease - 2 Years)

HIGHLIGHTS

- ✓ 12' OFFICE CEILING
- ✓ 1 OVERHEAD DOOR
- ✓ 20' LOT FRONTAGE

For complete offering information or inspection, please contact broker:

LEON LIPO
LLIPO@CTNYC.COM
646-942-4172



6217 14TH AVE BROOKLYN, NY 11219

**NEW
EXCLUSIVE
FOR SUBLEASE**

Borough Park | 2,000 SF Warehouse with Office



97-77 QUEENS BLVD SUITE 1120, REGO PARK, NY 11374 • 718-937-8100 • WWW.CTNYC.COM

All information is from sources deemed reliable and is submitted subject to errors, omission, changes of price or other conditions, prior to sale, rent, and withdrawal without notice.



6217 14TH AVE
BROOKLYN, NY 11219

**NEW
EXCLUSIVE
FOR SUBLEASE**

Borough Park | 2,000 SF Warehouse with Office



97-77 QUEENS BLVD SUITE 1120, REGO PARK, NY 11374 • 718-937-8100 • WWW.CTNYC.COM

All information is from sources deemed reliable and is submitted subject to errors, omission, changes of price or other conditions, prior to sale, rent, and withdrawal without notice.



6217 14TH AVE BROOKLYN, NY 11219

**NEW
EXCLUSIVE
FOR SUBLEASE**

Borough Park | 2,000 SF Warehouse with Office



97-77 QUEENS BLVD SUITE 1120, REGO PARK, NY 11374 • 718-937-8100 • WWW.CTNYC.COM

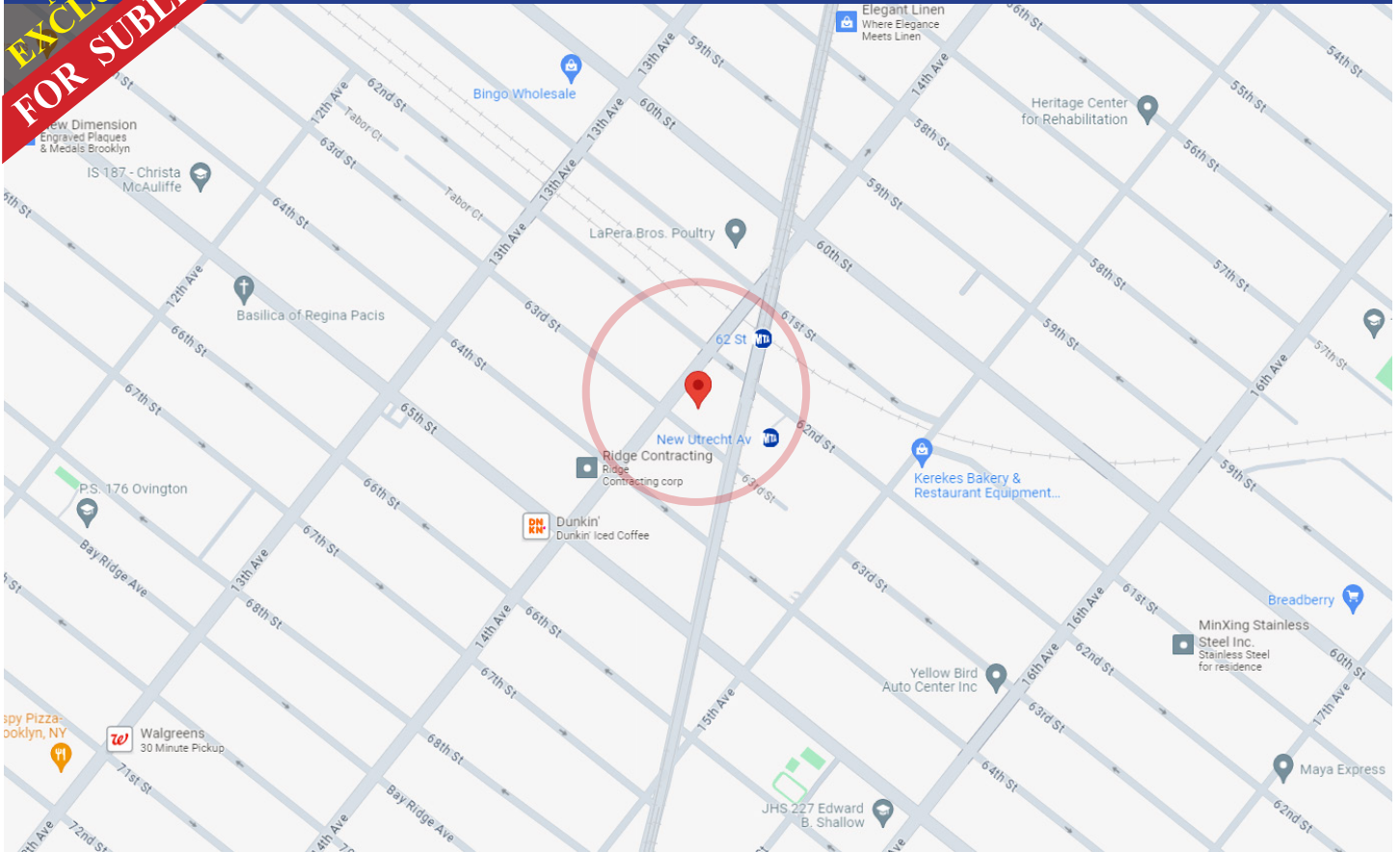
All information is from sources deemed reliable and is submitted subject to errors, omission, changes of price or other conditions, prior to sale, rent, and withdrawal without notice.



6217 14TH AVE BROOKLYN, NY 11219

**NEW
EXCLUSIVE
FOR SUBLEASE**

Borough Park | **2,000 SF** Warehouse with Office



MAP & TRANSPORTATION

TRANSIT/SUBWAY

New Utrecht Avenue	2 min walk	0.2 mi
62 Street	2 min walk	0.1 mi
55 Street	8 min walk	0.6 mi
71 Street	9 min walk	0.5 mi
18 Avenue (N Line)	12 min walk	0.9 mi

97-77 QUEENS BLVD SUITE 1120, REGO PARK, NY 11374 • 718-937-8100 • WWW.CTNYC.COM

All information is from sources deemed reliable and is submitted subject to errors, omission, changes of price or other conditions, prior to sale, rent, and withdrawal without notice.