



Available For Lease

**1810 Lemoyne Ave
Syracuse, NY 13208**

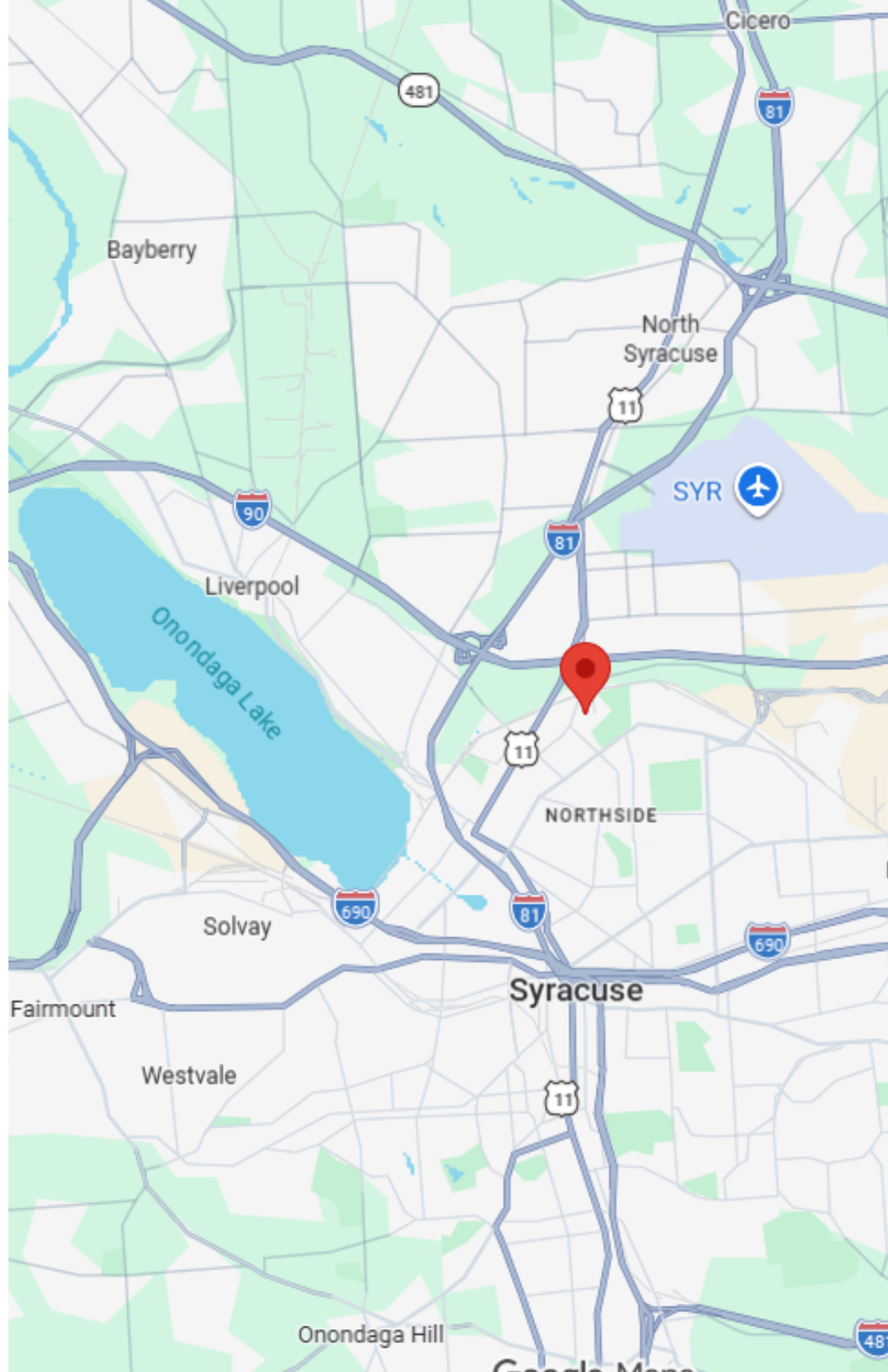


Property Summary

1810 Lemoyne Ave in Syracuse, NY is a 32,023 SF Class B industrial facility situated on 6.33 acres with flexible C zoning. Built in 1951 and modernized for today's needs, this single-story masonry building offers 16-21-foot clear heights, heavy 3-phase power (1,200–5,000 amps), wet sprinkler systems, and strong multi-tenant potential. It features 14 exterior and 2 interior dock doors, 4 large drive-ins (20' x 14'), 7 levelators, and parking for 100 vehicles. Ideally located near I-81 and I-690 with close access to downtown Syracuse, this property is perfectly positioned for warehousing, distribution, or light manufacturing in Central New York.

PROPERTY SUMMARY

Address	1810 Lemoyne Ave, Syracuse, NY 13208
Type	For Lease
Total SF	32,023
Acreage	6.33
Year Built/Renovated	1951
Dock Doors	14
Drive-ins	4
Clear Height	16'-21'
Zoning	C

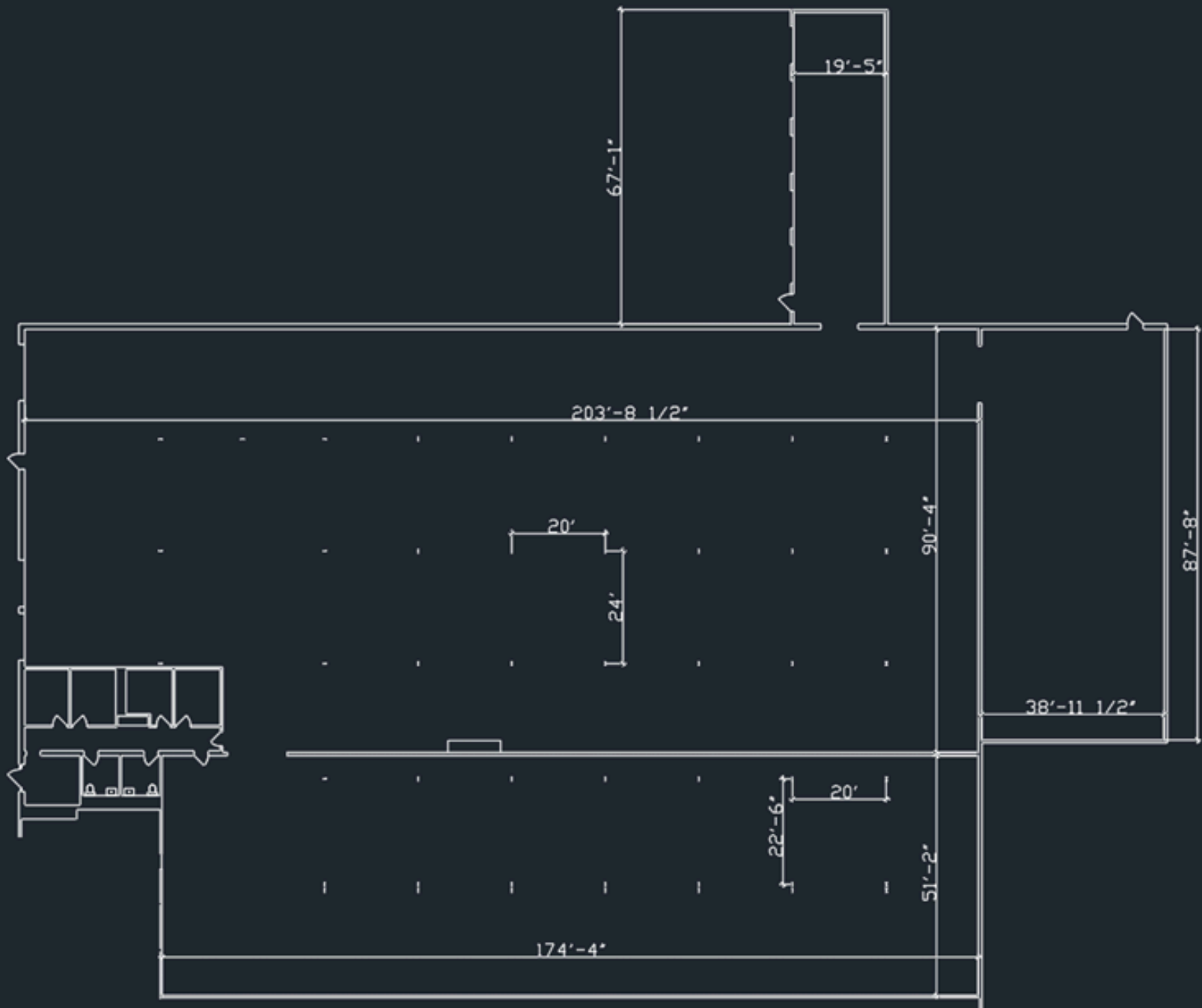


Property Photos



Property Photos







Matt DePerro



Leasing Officer



315-720-9731



Matt@IronHornEnterprises.com

Available For Lease

**1810 Lemoyne Ave
Syracuse, NY 13208**

