

An As Built Marketing Package for  
Luke Business Park

1206 Luke Street  
Irving, Texas 75061

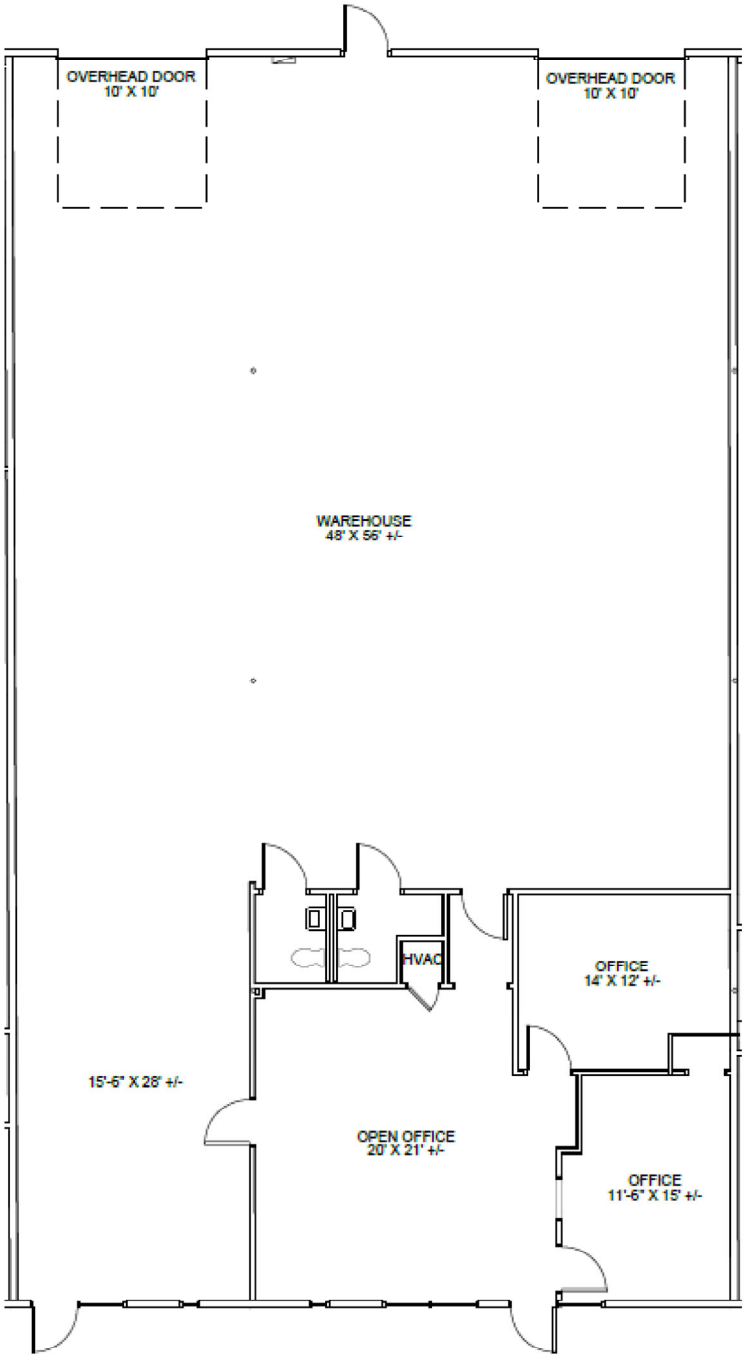
Sheet **A6**  
Of 10 Sheet(s)

Scale: Not to Scale  
Sheet Size: 11" x 8.5"  
Not For Construction



**BAY  
SPACE**

© 2025 HosScans, LLC.  
All right reserved.  
These drawings and any associated  
documents are protected under U.S.  
copyright law. No part of this work may  
be produced, distributed, or used in any  
form, by any method, for any purpose,  
without the prior written consent of  
HosScans, LLC. Unauthorized use is  
subject to legal action.



As Built Floor Plan for Marketing

