

RETAIL FOR LEASE

801 S Berendo St, Los Angeles, CA 90005

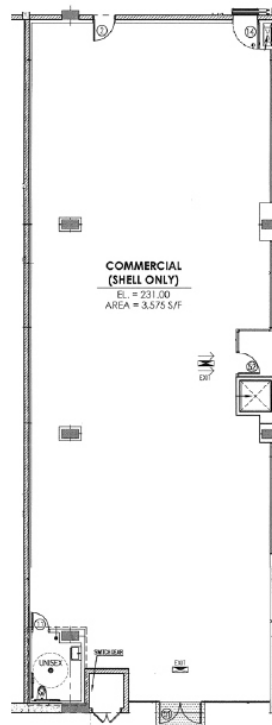


AVAILABILITY

- **Size:** 1,800-3,575 sf, Divisible
- **Asking:** \$4.00/sf
- **Type:** NNN

HIGHLIGHTS

- **Excellent Location:** Ground floor of the newly constructed apartment building. Retail ground floor
- **Dedicated retail parking**
- **Densely Populated Area:** More than 669,000 residents within a 3-mile radius area
- **Proximity** to offices, high-rise apartments, Robert F. Kennedy Community School



Contact Information:

Ryan Oh
(213) 804-7548
roh@cbcwilshire.com
BRE 01082638

JW Baelly
(818) 321-6373
jw@cbcwilshire.com
BRE 01865026

Alice Oh
(213) 952-6069
aoh@cbcwilshire.com
BRE 02129043

Coldwell Banker Commercial
Wilshire Properties
3731 Wilshire Blvd Ste 820,
Los Angeles, California 90010
T. 213.637.1112 F. 213.637.1113
BRE 01936489

Coldwell Banker Commercial Wilshire Properties have obtained the information in this brochure from sources that they believe to be reliable. However, they have not verified its accuracy and make no guarantee, warranty or representation about it. It is submitted subject to the possibility of errors, omissions, change of price, rental or other conditions, prior sale, lease or financing, or withdrawal without notice. Coldwell Banker Commercial Wilshire Properties has included projections, opinions, assumptions or estimates for example only, and they may not represent current or future performance of the property. You and your tax and legal advisors should conduct your own investigation of the property and transaction.

