

754 Targee Street

Concord, Staten Island

New Construction

- Proposed 7,020 sq ft building
- 23 Car Parking
- Entry and Exit from 2-Streets
- 200' of frontage on DeKalb Street with fantastic visibility to Route 278 and the Service Road
- Located at lighted intersection of Targee Street and DeKalb Street
- Targee St serves as a main artery from the SI Expressway to access St. George and the new Empire Outlets and SI Ferry
- Surrounding Tenants include:
 - Home Depot
 - Goodyear
 - C-Town Supermarket
 - Intoxx Fitness

V.I.P. Real Estate, Inc.
718-967-2600

Offered by:

V.I.P. Real Estate, Inc.

Stephen E. Picciurro

stephen@viprealestate.net

917-842-0888 / 718-967-2600



754 Targee Street

Concord, Staten Island, NY



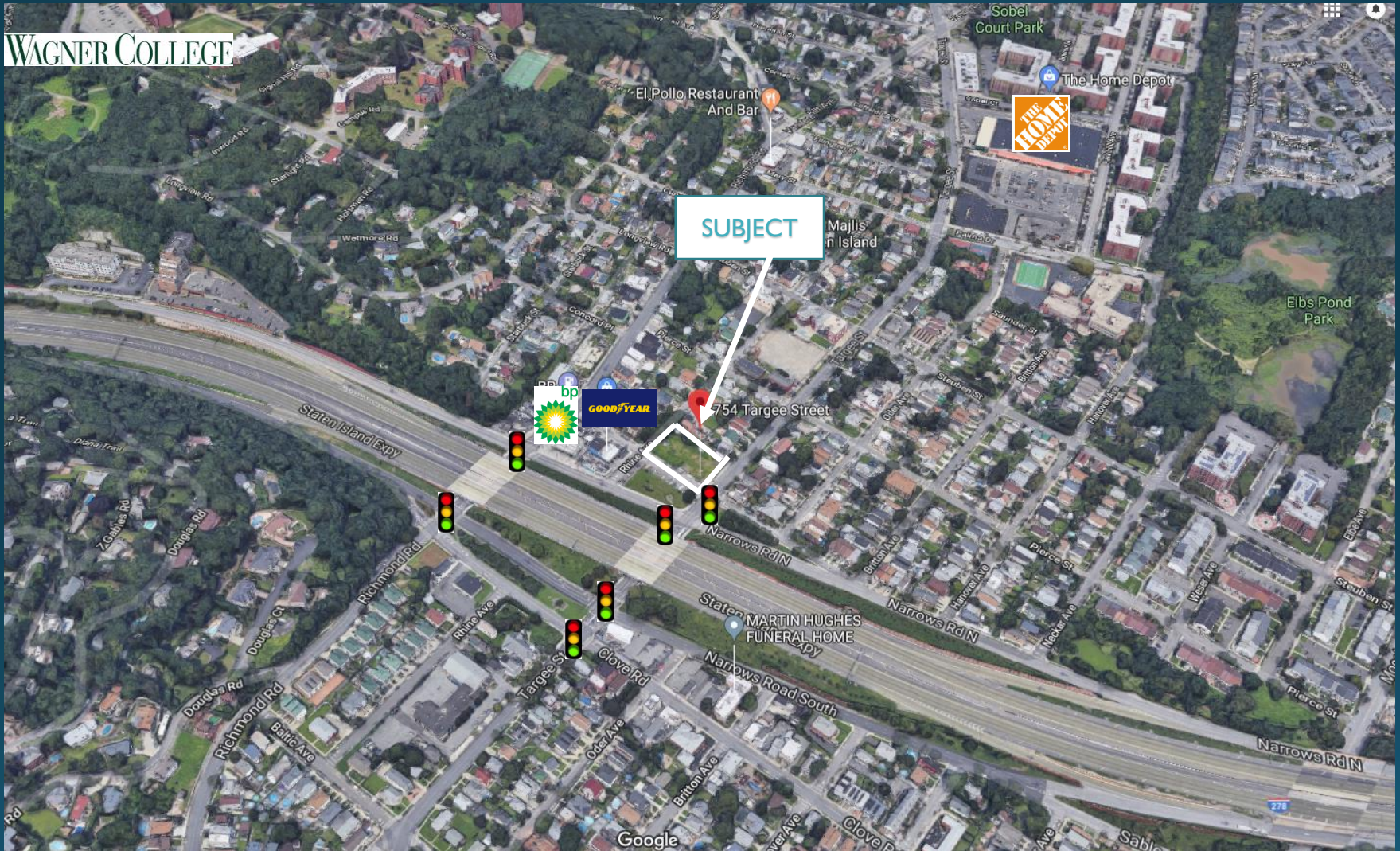
V.I.P. Real Estate, Inc.

718-967-2600

Stephen Picciurro
Broker Associate

754 Targee Street

Concord, Staten Island, NY



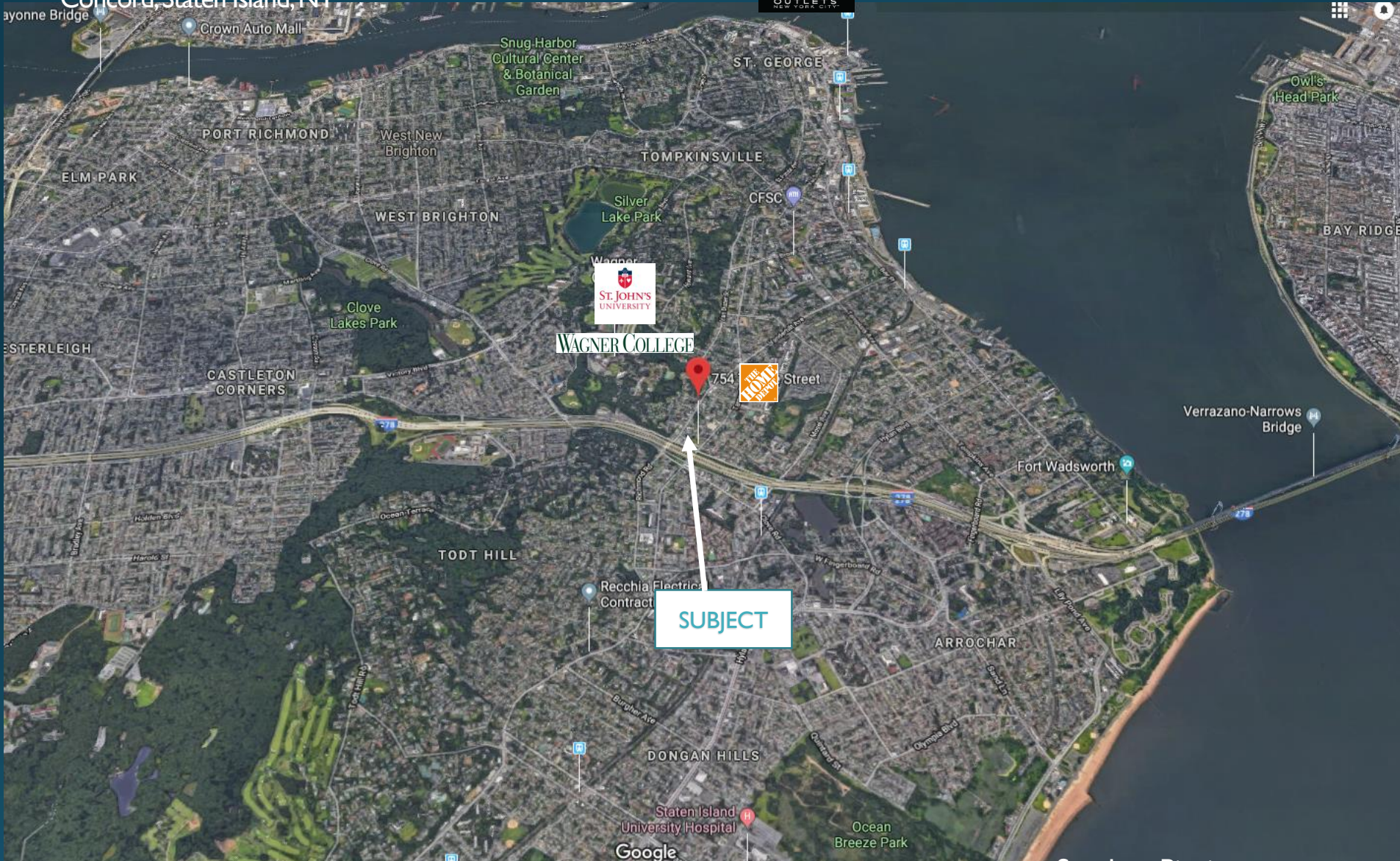
V.I.P. Real Estate, Inc.

718-967-2600

Stephen Picciurro
Broker Associate

754 Targee Street

Concord, Staten Island, NY

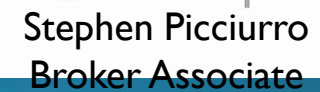


V.I.P. Real Estate, Inc.

718-967-2600

Stephen Picciurro
Broker Associate

Concord, Staten Island, NY



718-967-2600

ARCHITECT:
LAND PLANNING & ENGINEERING CONS.; VITO FOSSELLA
PHONE No. (718) 273-7825